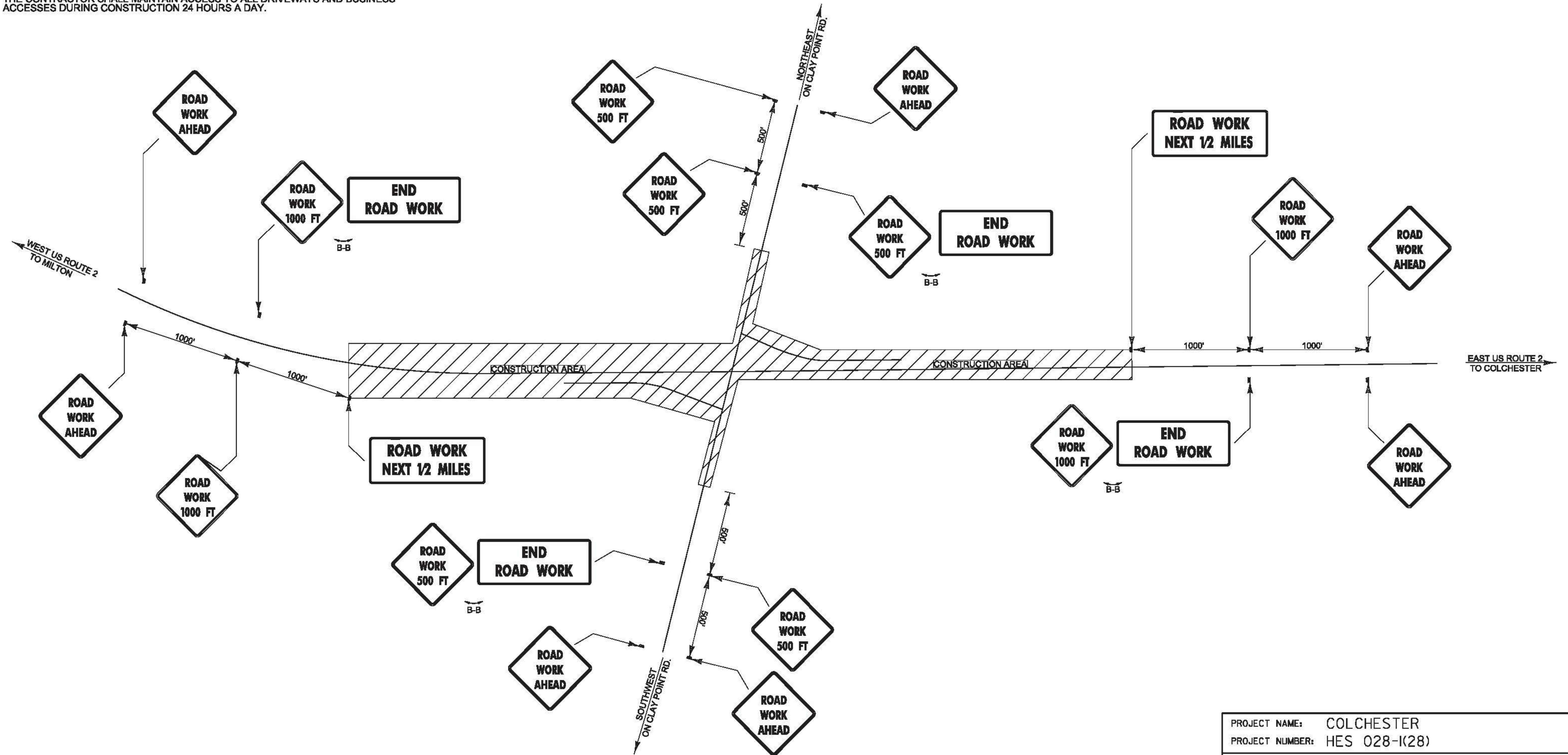


TRAFFIC CONTROL GENERAL NOTES

1. THE CONSTRUCTION SEQUENCING PLAN HEREIN IS DEMONSTRATIVE FOR CONSTRUCTABILITY AND SHALL NOT BE CONSIDERED A TRAFFIC CONTROL PLAN. THE CONTRACTOR MUST SUBMIT A SEPARATE SITE-SPECIFIC TRAFFIC CONTROL PLAN TO THE PROJECT ENGINEER, A MINIMUM OF 2 WEEKS PRIOR TO COMMENCEMENT OF ANY CONSTRUCTION ACTIVITIES FOR REVIEW AND APPROVAL. THE TRAFFIC CONTROL PLAN SHALL BE DESIGNED AND STAMPED BY A LICENSED PROFESSIONAL ENGINEER, REGISTERED IN THE STATE OF VERMONT.
2. REFER TO THE T-SERIES VERMONT STATE CONSTRUCTION STANDARDS AND THE LATEST EDITION OF THE MANUAL FOR UNIFORM TRAFFIC CONTROL DEVICES (MUTCD) FOR DETAILED INFORMATION REGARDING CHANNELIZATION DEVICES, TAPER LENGTHS, BARRICADES, DETOURS, LONGITUDINAL DROP-OFFS AND MISCELLANEOUS TRAFFIC CONTROL DETAILS, IF APPLICABLE.
3. THE CONTRACTOR SHALL BE RESPONSIBLE FOR LOCATING CONSTRUCTION SIGNAGE SO AS NOT TO INTERFERE OR OBSTRUCT THE VIEW OF EXISTING TRAFFIC CONTROL DEVICES, STOPPING SIGHT DISTANCE AND CORNER SIGHT DISTANCE. EXISTING SIGNS SHALL BE COVERED OR REMOVED WHEN THEY CONFLICT WITH CONSTRUCTION TRAFFIC OPERATIONS.
4. THE CONTRACTOR SHALL MAINTAIN ACCESS TO ALL DRIVEWAYS AND BUSINESS ACCESSES DURING CONSTRUCTION 24 HOURS A DAY.
5. FURNISHING, INSTALLING, MAINTENANCE OF, RELOCATING AND REMOVING REFLECTORIZED DRUMS, CONSTRUCTION SIGNING FOR TRAFFIC SHIFTS AND PEDESTRIAN BARRICADES AND SIGNAGE WILL BE PAID FOR UNDER CONTRACT ITEM 641.10, TRAFFIC CONTROL (COLCHESTER HES 028-1(28)).
6. FURNISHING AND PERFORMING ORIGINAL INSTALLATION AND FINAL REMOVAL FROM THE PROJECT OF TEMPORARY TRAFFIC BARRIER WILL BE PAID FOR UNDER CONTRACT ITEM 621.90, TEMPORARY TRAFFIC BARRIER. PAYMENT FOR INTERMITTENT REMOVING AND RESETTING OF TEMPORARY TRAFFIC BARRIER TO ACCOMMODATE PHASED CONSTRUCTION, AS ALLOWED UNDER SUBSECTION 621.14, WILL BE MADE UNDER CONTRACT ITEM 621.95. REMOVE AND RESET TEMPORARY TRAFFIC BARRIER. TEMPORARY TRAFFIC BARRIERS SHALL BE DELINEATED IN ACCORDANCE WITH THE STANDARD SPECIFICATIONS FOR CONSTRUCTION AND THE LATEST EDITION OF THE MUTCD. DELINEATION OF TRAFFIC BARRIERS WILL BE PAID FOR UNDER CONTRACT ITEM 641.10, TRAFFIC CONTROL (COLCHESTER HES 028-1(28)).
7. WHERE TEMPORARY TRAFFIC BARRIER IS USED, ELEVATION DIFFERENCES BETWEEN A PORTION OF ROADWAY OPENED FOR TRAFFIC AND A PORTION OF ROADWAY CONSTRUCTED SHALL NOT EXCEED 18" DURING NON-WORKING HOURS.
8. SPECIAL CARE SHALL BE TAKEN TO PROVIDE ACCESS THROUGH THE WORK ZONES FOR EMERGENCY VEHICLES. THE CONTRACTOR SHALL COORDINATE WITH BOTH POLICE AND FIRE DEPARTMENTS FROM MILTON, COLCHESTER AND SOUTH HERO TO DETERMINE THEIR MINIMUM ACCESS REQUIREMENTS BEFORE PROCEEDING TO THE NEXT PHASE OF CONSTRUCTION. THE CONTRACTOR SHALL ENSURE THAT ACCESS IS AVAILABLE TO ALL PROPERTIES AT ALL TIMES FOR EMERGENCY VEHICLES.
9. ALL SIGNS SHALL BE PAID FOR UNDER ITEM NO. 641.10, TRAFFIC CONTROL (COLCHESTER HES 028-1(28)).
10. THE CONTRACTOR SHALL PROVIDE TWO (2) PORTABLE CHANGEABLE MESSAGE SIGNS FOR THE DURATION OF THE PROJECT. THE LOCATION AND MESSAGE CONTENT SHALL BE DETERMINED IN THE FIELD BY THE ENGINEER. PORTABLE CHANGEABLE MESSAGE SIGNS WILL BE PAID FOR UNDER CONTRACT ITEM 641.15, PORTABLE CHANGEABLE MESSAGE BOARDS.
11. PRIOR TO THE COMMENCEMENT OF ANY WORK OR THE PLACEMENT OF EQUIPMENT ON THE ROADWAY THE CONTRACTOR SHALL PROVIDE ADVANCED WARNING SIGNS IN ACCORDANCE WITH THE CONSTRUCTION SIGNING APPROACH PLANS AND THE LATEST EDITION OF THE MANUAL FOR UNIFORM TRAFFIC CONTROL DEVICES (MUTCD).
12. INSTALL AND MAINTAIN ANY EROSION CONTROL MEASURES IN ACCORDANCE WITH THE EROSION CONTROL PLANS AND DETAILS IN ADDITION TO THE VERMONT D.E.C.'S "LOW RISK SITE HANDBOOK FOR EROSION PREVENTION AND SEDIMENT CONTROL."
13. INSTALL ALL WARNING SIGNAGE, REFLECTORIZED DRUMS, TRAFFIC BARRIER, AND ANY OTHER TRAFFIC CONTROL DEVICES PER ACCEPTED TRAFFIC CONTROL PLANS OR AS DIRECTED BY THE ENGINEER.
14. INSTALL ANY STORMWATER TREATMENT PRACTICES AND DRAINAGE ELEMENTS AS SHOWN ON THEIR APPLICABLE PLANS.



CONSTRUCTION APPROACH SIGNING

NOT TO SCALE
SEE STD T-10
FOR SIGN PLACEMENT

PROJECT NAME: COLCHESTER	
PROJECT NUMBER: HES 028-1(28)	
FILE NAME: t13b028frm.dgn	PLOT DATE: 12/15/2015
PROJECT LEADER: P. COBURN	DRAWN BY: M. BOGACZYK
DESIGNED BY: M. BOGACZYK	CHECKED BY: M. LACROIX
CONSTRUCTION APPROACH SIGNING	SHEET 71 OF 91