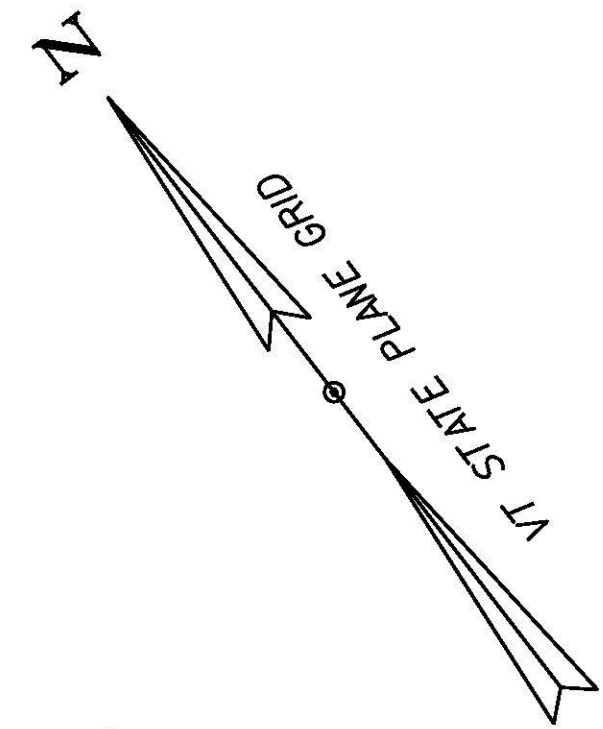


INLET PROTECTION, TYPE I
 STA. 23+52.29, LT 59.90'
 STA. 24+50.53, RT 36.95'
 STA. 28+52.89, LT 36.11'
 STA. 28+53.74, RT 35.95'

PROJECT DEMARCATION FENCE
 STA. 602+60.39, RT - STA. 602+22.84, RT



FARMINGTON EXTREMELY ROCKY
 LOAM, 5 TO 20 PERCENT SLOPES
 HYDRO. SOIL GROUP D
 K = 0.32

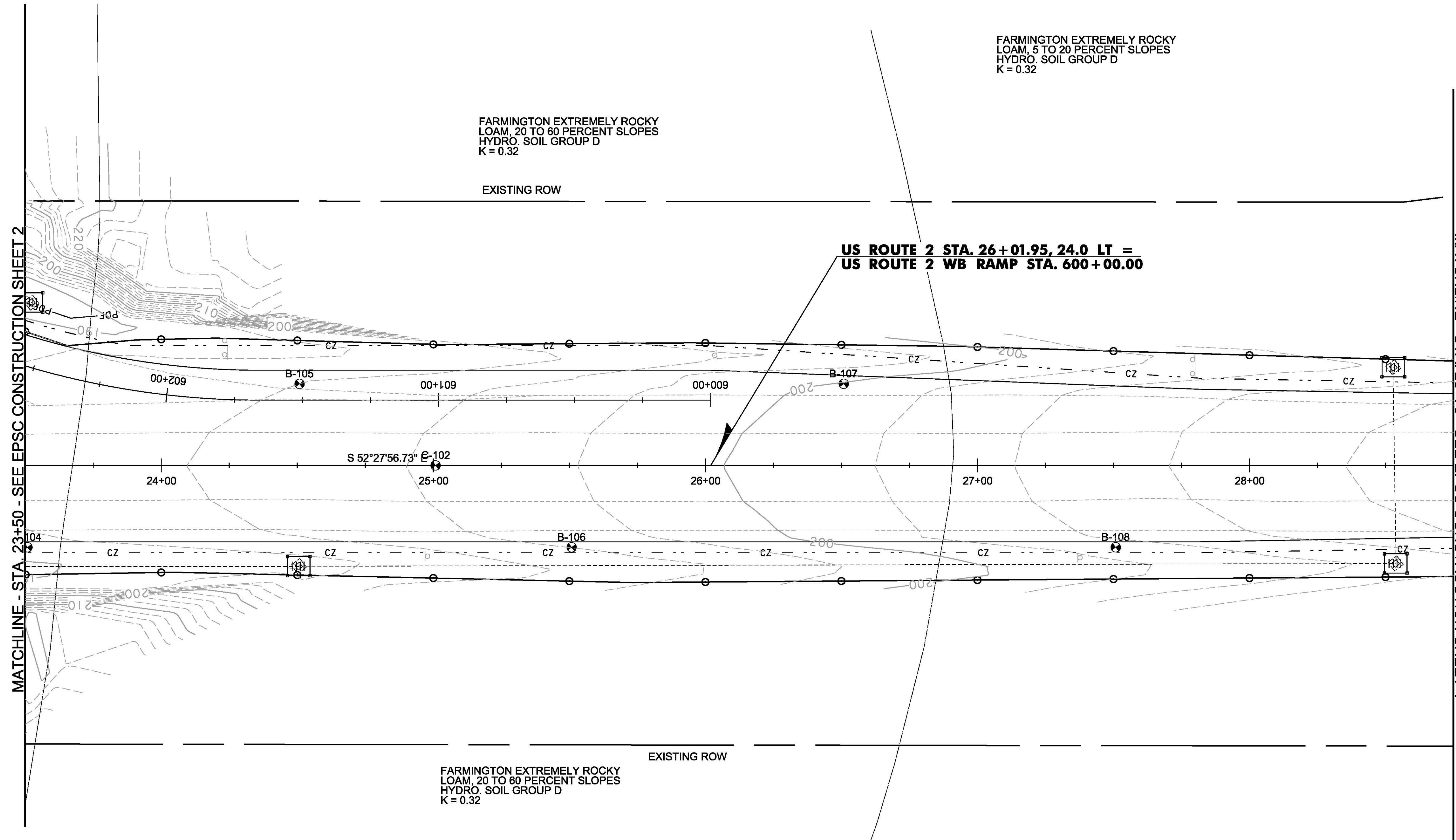
FARMINGTON EXTREMELY ROCKY
 LOAM, 20 TO 60 PERCENT SLOPES
 HYDRO. SOIL GROUP D
 K = 0.32

EXISTING ROW

**US ROUTE 2 STA. 26+01.95, 24.0 LT =
 US ROUTE 2 WB RAMP STA. 600+00.00**

MATCHLINE - STA. 23+50 - SEE EPSC CONSTRUCTION SHEET 2

MATCHLINE - STA. 28+75 - SEE EPSC CONSTRUCTION SHEET 4

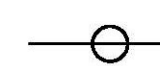






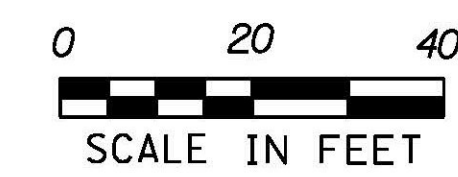
FARMINGTON EXTREMELY ROCKY
 LOAM, 20 TO 60 PERCENT SLOPES
 HYDRO. SOIL GROUP D
 K = 0.32

EXISTING ROW

SCANTIC SILT LOAM,
 2 TO 6 PERCENT SLOPES
 HYDRO. SOIL GROUP D
 K = 0.32

LEGEND

-  LIMITS OF CONSTRUCTION
-  PROJECT DEMARCATION FENCE
-  TEMPORARY STONE CHECK DAM, TYPE I
-  TEMPORARY EROSION MATTING
-  INLET PROTECTION, TYPE I



PROJECT NAME: COLCHESTER	
PROJECT NUMBER: HES 028-1(28)	
FILE NAME: t13b028ero.dgn	PLOT DATE: 11/23/2015
PROJECT LEADER: P. COBURN	DRAWN BY: M. BOGACZYK
DESIGNED BY: M. BOGACZYK	CHECKED BY: M. LACROIX
EPSC CONSTRUCTION SHEET 3	SHEET 49 OF 91