

MATCHLINE - STA. 18+00 - SEE EPSC EXISTING CONDITIONS SHEET 1

MATCHLINE - STA. 23+50 - SEE EPSC EXISTING CONDITIONS SHEET 3

ADAMS AND WINDSOR LOAMY SANDS,
0 TO 5 PERCENT SLOPES
HYRDO. SOIL GROUP A
K = 0.17

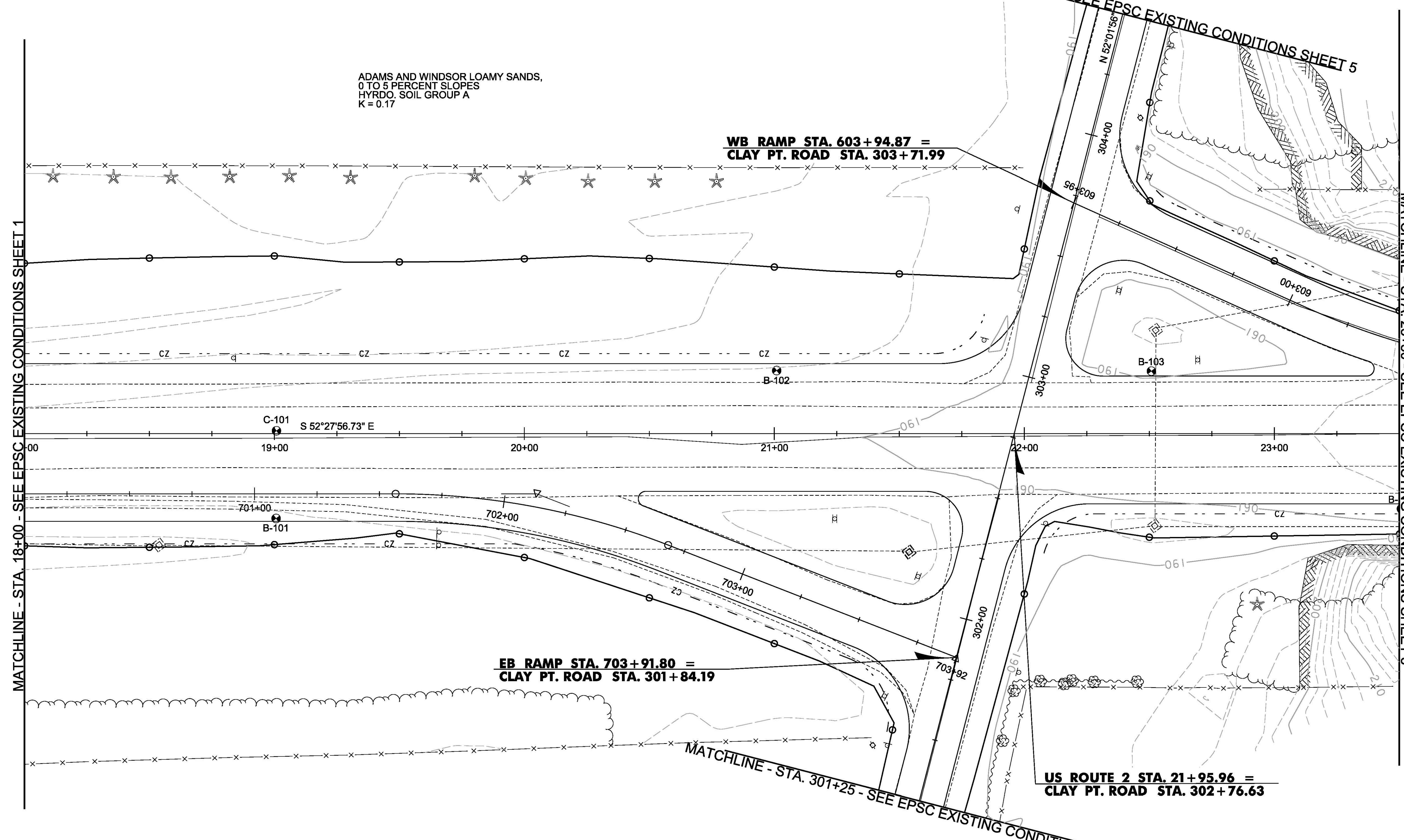
**WB RAMP STA. 603+94.87 =
CLAY PT. ROAD STA. 303+71.99**

**EB RAMP STA. 703+91.80 =
CLAY PT. ROAD STA. 301+84.19**

**US ROUTE 2 STA. 21+95.96 =
CLAY PT. ROAD STA. 302+76.63**

MATCHLINE - STA. 304+50 - SEE EPSC EXISTING CONDITIONS SHEET 5

MATCHLINE - STA. 301+25 - SEE EPSC EXISTING CONDITIONS SHEET 5



PROJECT NAME:	COLCHESTER	PLOT DATE:	11/23/2015
PROJECT NUMBER:	HES 028-1(28)	DRAWN BY:	M. BOGACZYK
FILE NAME:	t13b028ero.dgn	DESIGNED BY:	M. BOGACZYK
PROJECT LEADER:	P. COBURN	CHECKED BY:	M. LACROIX
EPSC EXISTING CONDITIONS SHEET 2		SHEET	43 OF 91