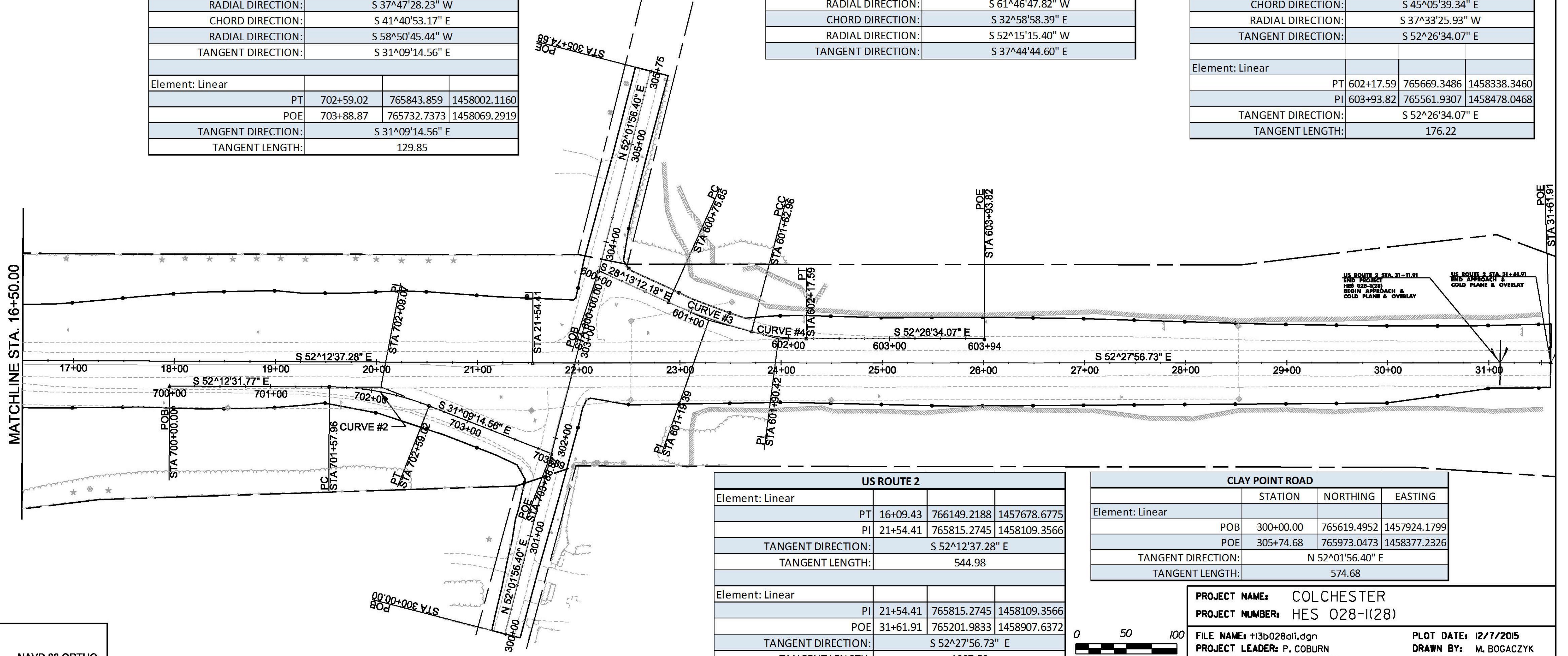


US ROUTE 2 EAST RIGHT TURN LANE			
	STATION	NORTHING	EASTING
Element: Linear			
POB	700+00.00	766015.7073	1457810.4611
PC	701+57.96	765918.9089	1457935.2926
TANGENT DIRECTION:	S 52°12'31.77" E		
TANGENT LENGTH:	157.96		
Element: CURVE #2			
PC	701+57.96	765918.9089	1457935.2926
PI	702+09.07	765887.593	1457975.6777
CC	705701.5903	7657766.7766	
PT	702+59.02	765843.859	1458002.1160
RADIUS:	275		
DELTA:	21°03'17.21" Right		
DEGREE OF CURVATURE (ARC):	20°50'05.38"		
LENGTH:	101.06		
TANGENT:	51.1		
CHORD:	100.49		
MIDDLE ORDINATE:	4.63		
EXTERNAL:	4.71		
TANGENT DIRECTION:	S 52°12'31.77" E		
RADIAL DIRECTION:	S 37°47'28.23" W		
CHORD DIRECTION:	S 41°40'53.17" E		
RADIAL DIRECTION:	S 58°50'45.44" W		
TANGENT DIRECTION:	S 31°09'14.56" E		
Element: Linear			
PT	702+59.02	765843.859	1458002.1160
POE	703+88.87	765732.7373	1458069.2919
TANGENT DIRECTION:	S 31°09'14.56" E		
TANGENT LENGTH:	129.85		

US ROUTE 2 WEST RIGHT TURN LANE			
	STATION	NORTHING	EASTING
Element: Linear			
POB	600+00.00	765847.6207	1458216.507
PC	600+75.65	765780.9662	1458252.277
TANGENT DIRECTION:	S 28°13'12.18" E		
TANGENT LENGTH:	75.65		
Element: CURVE #3			
PC	600+75.65	765780.9662	1458252.2769
PI	601+19.39	765742.423	1458272.9610
CC	766029.2172	1458714.8744	
PT	601+62.93	765707.8342	1458299.7384
RADIUS:	525		
DELTA:	9°31'32.42" Left		
DEGREE OF CURVATURE (ARC):	10°54'48.53"		
LENGTH:	87.28		
TANGENT:	43.74		
CHORD:	87.18		
MIDDLE ORDINATE:	1.81		
EXTERNAL:	1.82		
TANGENT DIRECTION:	S 28°13'12.18" E		
RADIAL DIRECTION:	S 61°46'47.82" W		
CHORD DIRECTION:	S 32°58'58.39" E		
RADIAL DIRECTION:	S 52°15'15.40" W		
TANGENT DIRECTION:	S 37°44'44.60" E		

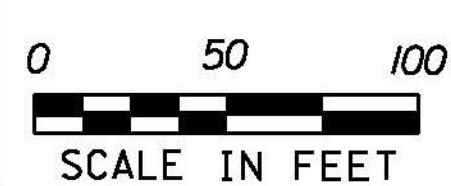
US ROUTE 2 WEST RIGHT TURN LANE			
	STATION	NORTHING	EASTING
Element: Linear			
PT	601+62.93	765707.8342	1458299.7384
PI	601+62.96	765707.8136	1458299.7542
TANGENT DIRECTION:	S 37°44'44.60" E		
TANGENT LENGTH:	0.03		
Element: CURVE #4			
PC	601+62.96	765707.8136	1458299.7542
PI	601+90.42	765686.0926	1458316.5698
CC	765838.2033	1458468.1809	
PT	602+17.59	765669.3486	1458338.3460
RADIUS:	213		
DELTA:	14°41'49.48" Left		
DEGREE OF CURVATURE (ARC):	26°53'57.94"		
LENGTH:	54.64		
TANGENT:	27.47		
CHORD:	54.49		
MIDDLE ORDINATE:	1.75		
EXTERNAL:	1.76		
TANGENT DIRECTION:	S 37°44'44.60" E		
RADIAL DIRECTION:	S 52°15'15.40" W		
CHORD DIRECTION:	S 45°05'39.34" E		
RADIAL DIRECTION:	S 37°33'25.93" W		
TANGENT DIRECTION:	S 52°26'34.07" E		
Element: Linear			
PT	602+17.59	765669.3486	1458338.3460
PI	603+93.82	765561.9307	1458478.0468
TANGENT DIRECTION:	S 52°26'34.07" E		
TANGENT LENGTH:	176.22		



DATUM
 VERTICAL NAVD 88 ORTHO
 HORIZONTAL NAD 83 (2011)

US ROUTE 2			
	STATION	NORTHING	EASTING
Element: Linear			
PT	16+09.43	766149.2188	1457678.6775
PI	21+54.41	765815.2745	1458109.3566
TANGENT DIRECTION:	S 52°12'37.28" E		
TANGENT LENGTH:	544.98		
Element: Linear			
PI	21+54.41	765815.2745	1458109.3566
POE	31+61.91	765201.9833	1458907.6372
TANGENT DIRECTION:	S 52°27'56.73" E		
TANGENT LENGTH:	1007.50		

CLAY POINT ROAD			
	STATION	NORTHING	EASTING
Element: Linear			
POB	300+00.00	765619.4952	1457924.1799
POE	305+74.68	765973.0473	1458377.2326
TANGENT DIRECTION:	N 52°01'56.40" E		
TANGENT LENGTH:	574.68		



PROJECT NAME: COLCHESTER
PROJECT NUMBER: HES 028-(K28)
FILE NAME: i13b028all.dgn
PROJECT LEADER: P. COBURN
DESIGNED BY: M. BOGACZYK
ALIGNMENT SHEET: 2
PLOT DATE: 12/7/2015
DRAWN BY: M. BOGACZYK
CHECKED BY: M. LACROIX
SHEET: 17 OF 91