

GPS CONTROL POINTS

HVCTRL #1

EXIT 17 RESET

NORTH = 762432.9320
 EAST = 1465974.3610
 ELEV. = 229.9800

DESCRIBED BY VERMONT GEODETIC SURVEY 1996 (DJM)
 GENERAL LOCATION, COLCHESTER, VT. THE MARK IS 19.5 M (64.0 FT) EAST OF THE EAST END OF THE U.S.ROUTE 2 BRIDGE OVER I-89 AT EXIT 17, BEHIND THE GUARDRAIL ON THE SOUTH SIDE OF U.S.ROUTE 2. IT IS SET FLUSH WITH GROUND SURFACE IN THE TOP OF A 30 CM DIAMETER CONCRETE MONUMENT Poured 1.4 M (4.6 FT) DEEP. IT IS 0.8 M (2.6 FT) SOUTH OF AND ABOUT LEVEL WITH THE SOUTH EDGE OF PAVEMENT OF U.S.ROUTE 2, 17.2 M (56.4 FT) EAST OF THE SOUTHEAST CORNER OF THE BRIDGE ABUTMENT, 0.8 M (2.6 FT) SOUTH OF A STEEL BEAM GUARDRAIL, AND 0.3 M (1.0 FT) NORTH OF A FIBERGLASS WITNESS POST.

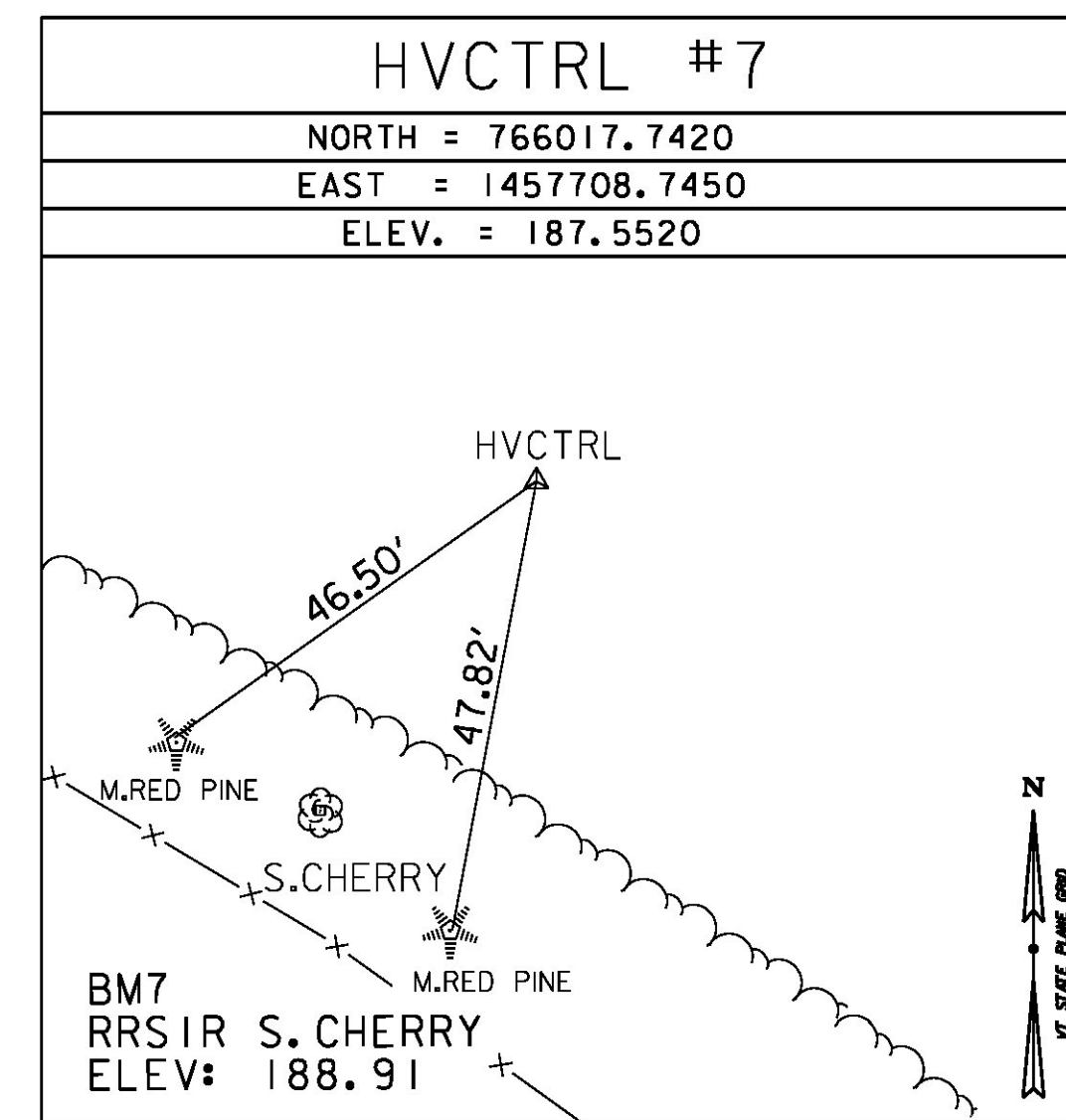
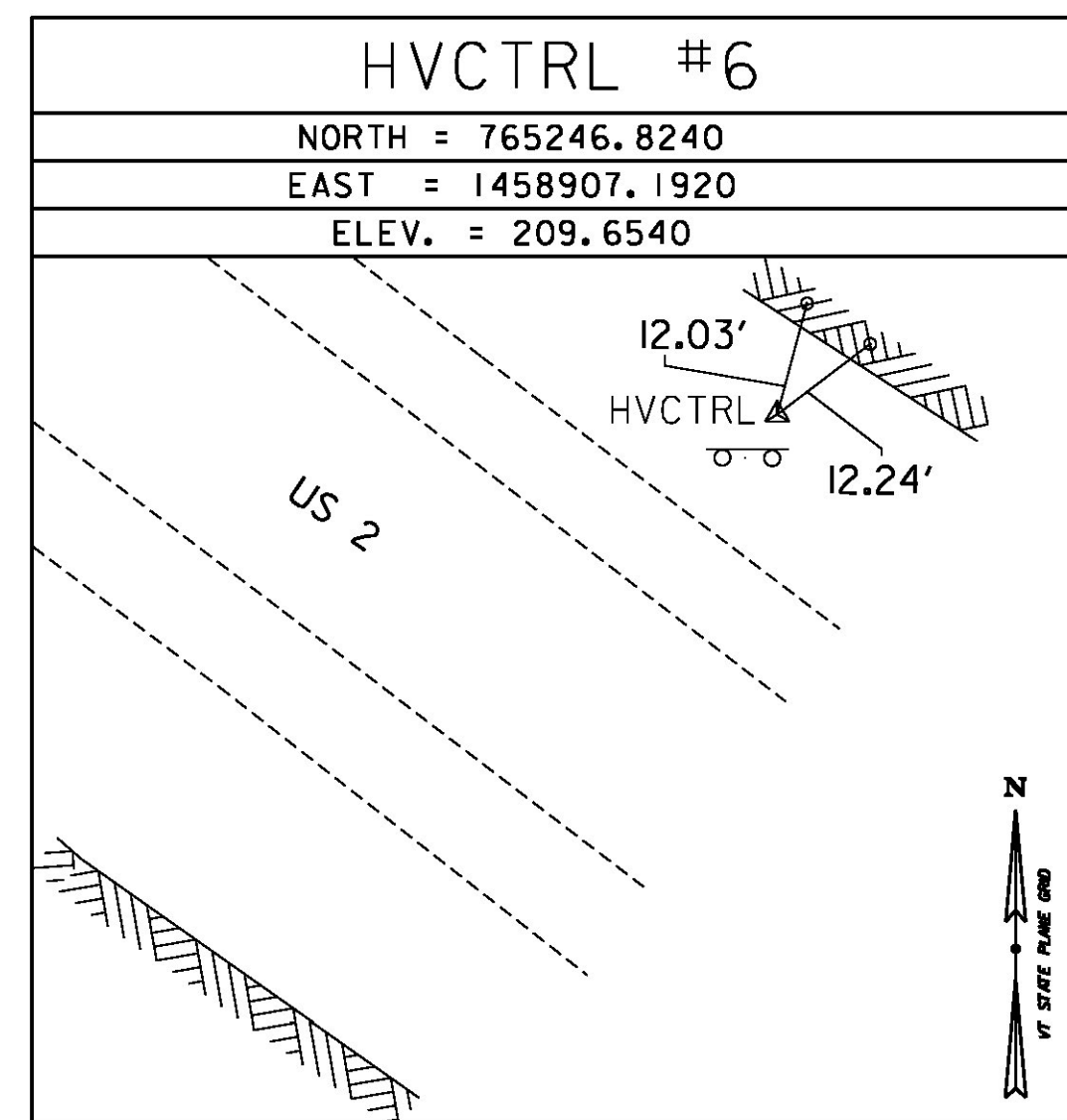
HVCTRL #2

EXIT 17 RESET AZ MK

NORTH = 763316.2520
 EAST = 1463390.2650
 ELEV. = 244.4700

DESCRIBED BY VERMONT GEODETIC SURVEY 1996 (DJM)
 GENERAL LOCATION, COLCHESTER, VT. TO REACH FROM THE WEST END OF THE U.S.ROUTE 2 BRIDGE OVER I-89 AT EXIT 17 GO WEST ALONG U.S.ROUTE 2 FOR 0.5 MI(0.8 KM) TO THE MARK ON THE LEFT, SET IN THE TOP OF A MASSIVE ROCK OUTCROP AT THE TOP OF A LEDGE CUT. THE MARK IS 21.2 M (69.6 FT) SOUTH OF AND ABOUT 6 M (19.7 FT) HIGHER THAN THE CENTERLINE OF U.S.ROUTE 2, 2.4 M (7.9 FT) SOUTH OF THE NORTH EDGE OF THE LEDGE CUT, 9.6 M (31.5 FT) NORTHWEST OF A 10 CM ELM, AND 9.3 M (30.5 FT) NORTH OF A FIBERGLASS WITNESS POST IN THE RIGHT OF WAY FENCE.

TRAVERSE TIES



NORTH = _____

EAST = _____

ELEV. = _____

NORTH = _____

EAST = _____

ELEV. = _____

NORTH = _____

EAST = _____

ELEV. = _____

ALIGNMENT TIES

NORTH = _____

EAST = _____

ELEV. = _____

NORTH = _____

EAST = _____

ELEV. = _____

NORTH = _____

EAST = _____

ELEV. = _____

NORTH = _____

EAST = _____

ELEV. = _____

NORTH = _____

EAST = _____

ELEV. = _____

DATUM

VERTICAL NAVD 88 ORTHO

HORIZONTAL NAD 83 (2011)

ADJUSTMENT COMPASS

PROJECT NAME: COLCHESTER/MILTON

PROJECT NUMBER: HES 028-1(28)/HES 028-1(27)

FILE NAME: X13B028TIE.DGN PLOT DATE: 11/23/2015

PROJECT LEADER: M. LACROIX DRAWN BY: S. DONOVAN

DESIGNED BY: VTRANS CHECKED BY: P. BEYOR

TIE SHEET SHEET 3 OF 91