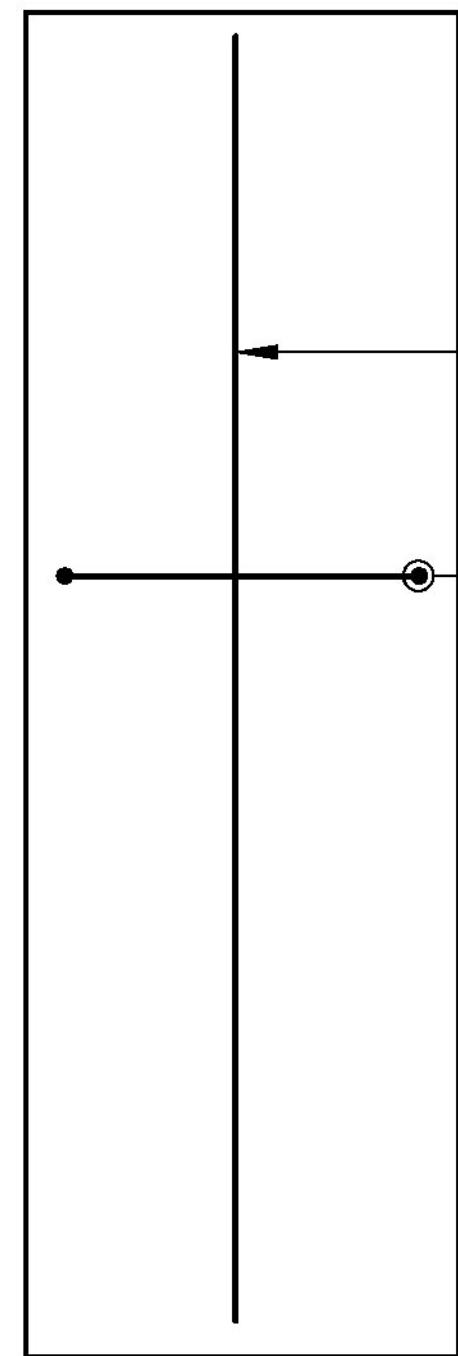
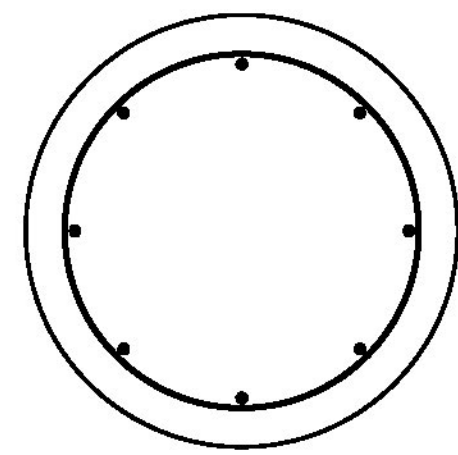


Drawing Sheet : R01					BAR LIST											
Bar Mark	Qty	Size	Total Length	Type	'A'	'B'	'C'	'D'	'E'	'F'	'G'	'H'	'J'	'K'	'O'	'R'
4A01	21	#4	9'-1"	T3			7'-10 1/2"				1'-3"				2'-6"	

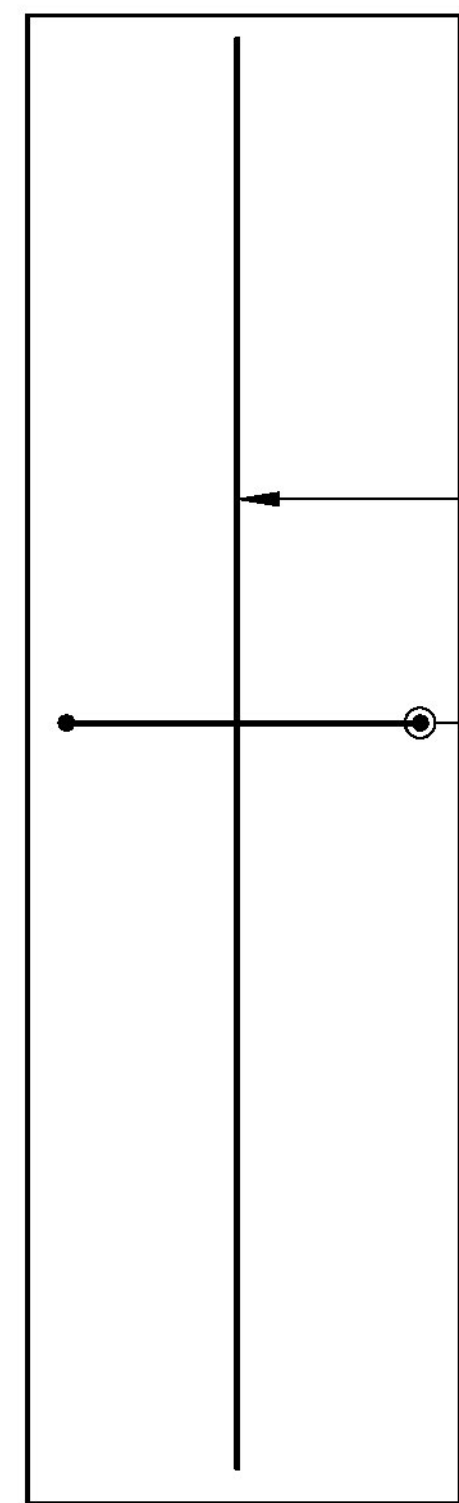
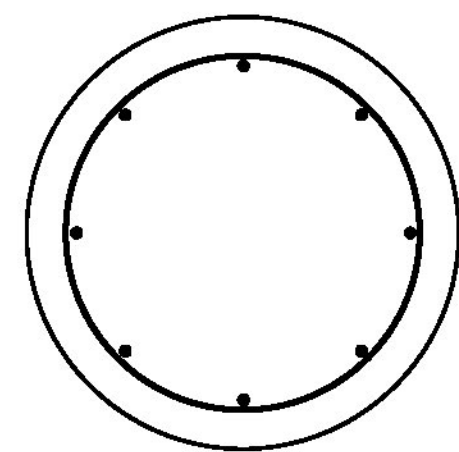


8-#8x8'-11" V

10-4A01 @12" TIES

B-102 POLE BASE

(1) REQUIRED

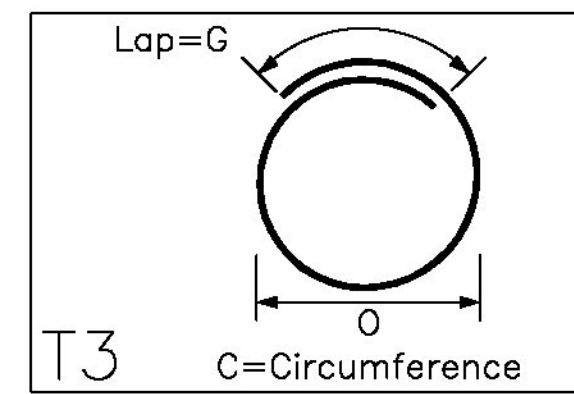


8-#8x9'-11" V

11-4A01 @12" TIES

B-103 POLE BASE

(1) REQUIRED




TEST BARS

2-#8x5'-0"
2-#4x5'-0"

ALL MATERIAL ON THIS DRAWING
SHALL BE ASTM A615 GRADE 60
U.N.O.

PLACING DRAWING APPROVAL AUTHORITY:
VERIFICATION OF DIMENSIONS, DETAILS, ETC
ARE REQUESTED WHERE INDICATED. IF EACH
VERIFICATION IS NOT NOTED OTHERWISE, IT
WILL BE ASSUMED TO BE CORRECT AS SHOWN.

 HarrisRebar Barker Steel National Strength. Local Service.	DETAILED AT: CANAAN NEW HAMPSHIRE	Project: HES SIGNAL (44) LUDLOW VT			
	THIS DRAWING IS NOT TO BE SCALED.		Drawing: POLE BASES REINFORCEMENT		
Notes/Revisions APPROVAL PRINT RECORD PRINT	Customer: THE BELDEN COMPANY				
	Engineer: DAVID N. FRITZ				
	Refer to Release:				
	Date 10/02/17	Drawn CPS	Chkd. 	JOB No. 33506506	Dwg. No. R01