

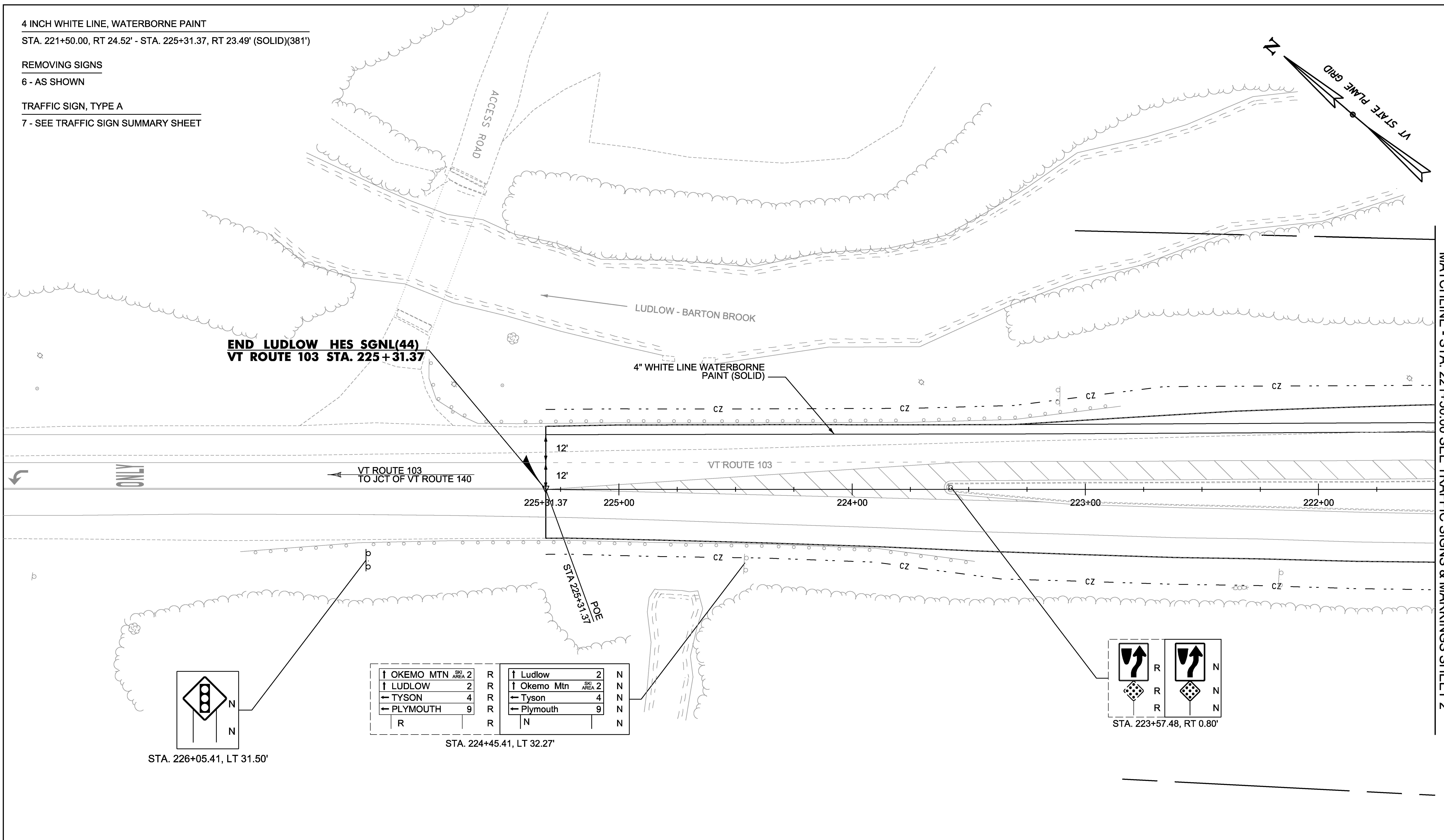
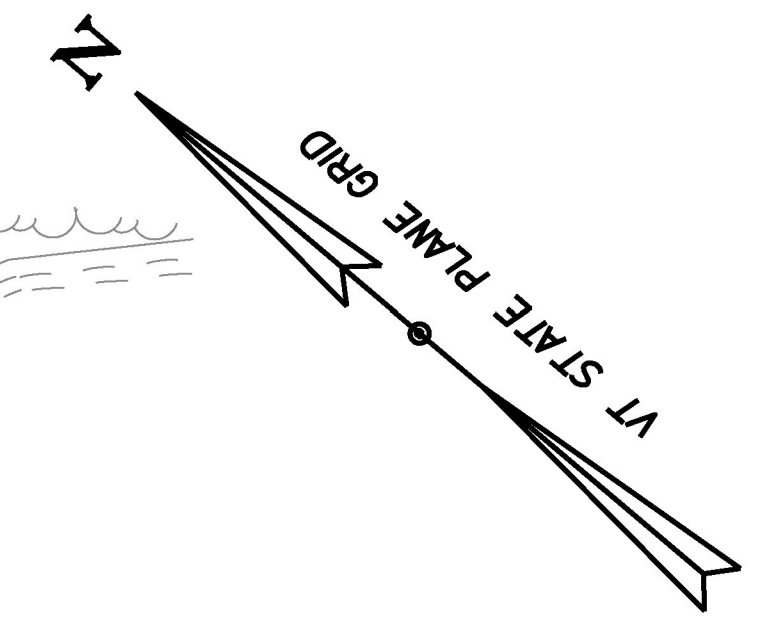
4 INCH WHITE LINE, WATERBORNE PAINT  
 STA. 221+50.00, RT 24.52' - STA. 225+31.37, RT 23.49' (SOLID)(381')

REMOVING SIGNS

6 - AS SHOWN

TRAFFIC SIGN, TYPE A

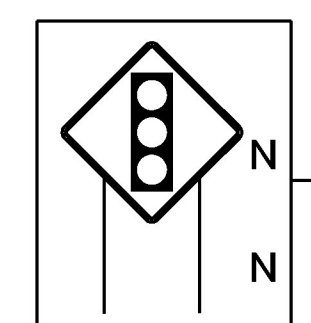
7 - SEE TRAFFIC SIGN SUMMARY SHEET



**END LUDLOW HES SGNL(44)**  
**VT ROUTE 103 STA. 225+31.37**

4" WHITE LINE WATERBORNE PAINT (SOLID)

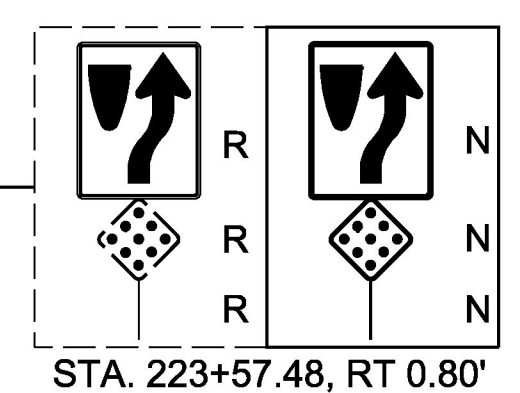
MATCHLINE - STA. 221+50.00 SEE TRAFFIC SIGNS & MARKINGS SHEET 2



STA. 226+05.41, LT 31.50'

↑ OKEMO MTN	SKI AREA 2	R	↑ Ludlow	2	N
↑ LUDLOW	2	R	↑ Okemo Mtn	SKI AREA 2	N
← TYSON	4	R	← Tyson	4	N
← PLYMOUTH	9	R	← Plymouth	9	N
		R			N

STA. 224+45.41, LT 32.27'



STA. 223+57.48, RT 0.80'



SCALE IN FEET

SIGN LEGEND	
R	= REMOVE
S	= SALVAGE
N	= NEW
SS	= SET SALVAGED
B-B	= BACK TO BACK
EXISTING	= _____
NEW	= _____

PROJECT NAME:	LUDLOW	PLOT DATE:	4/19/2017
PROJECT NUMBER:	HES SGNL(44)	DRAWN BY:	M. BOGACZYK
FILE NAME:	t13b020_tsl.dgn	CHECKED BY:	P. COBURN
PROJECT LEADER:	P. COBURN	SIGNS & PAVEMENT MARKINGS SHEET 1	SHEET 28 OF 43
DESIGNED BY:	M. BOGACZYK		