

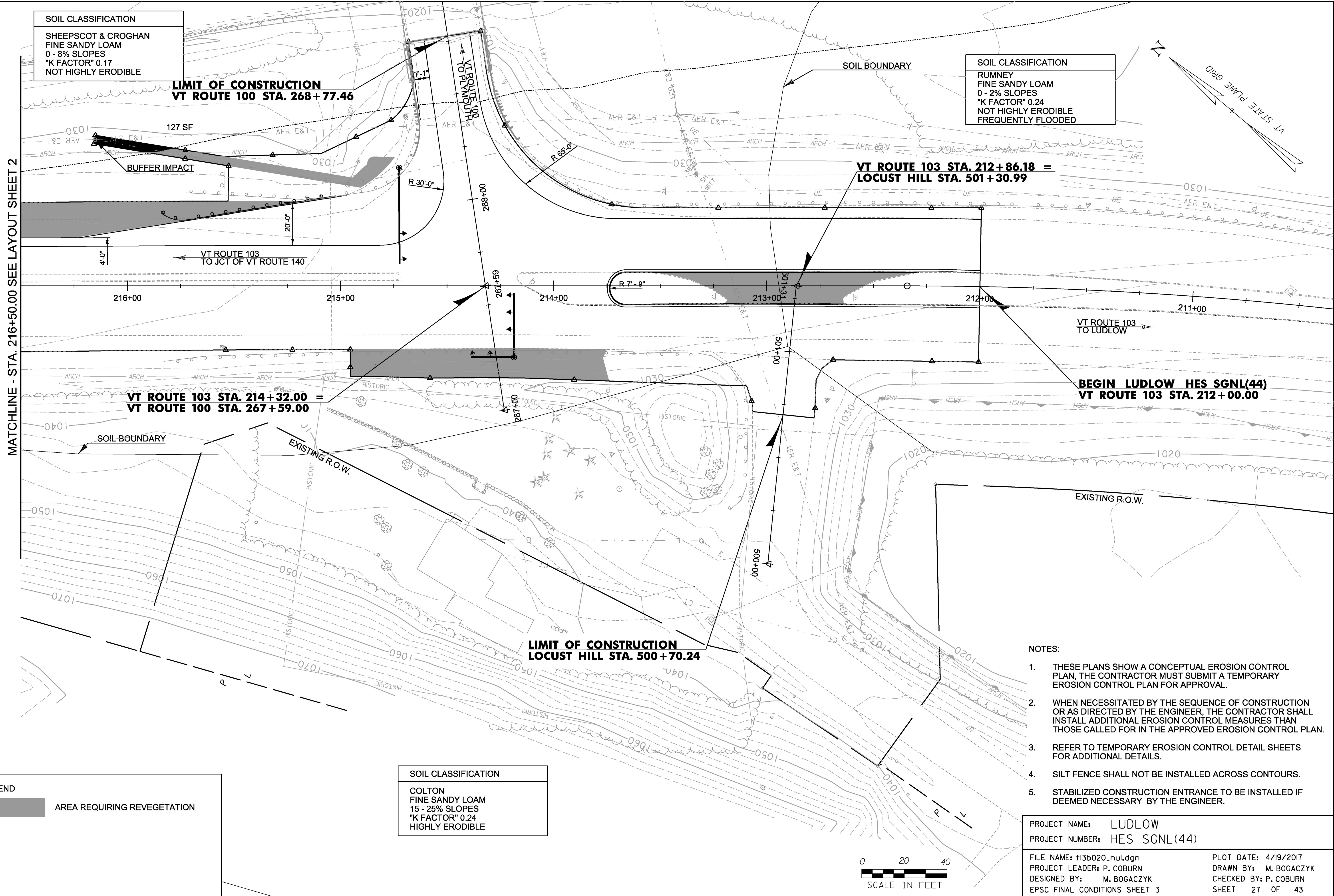
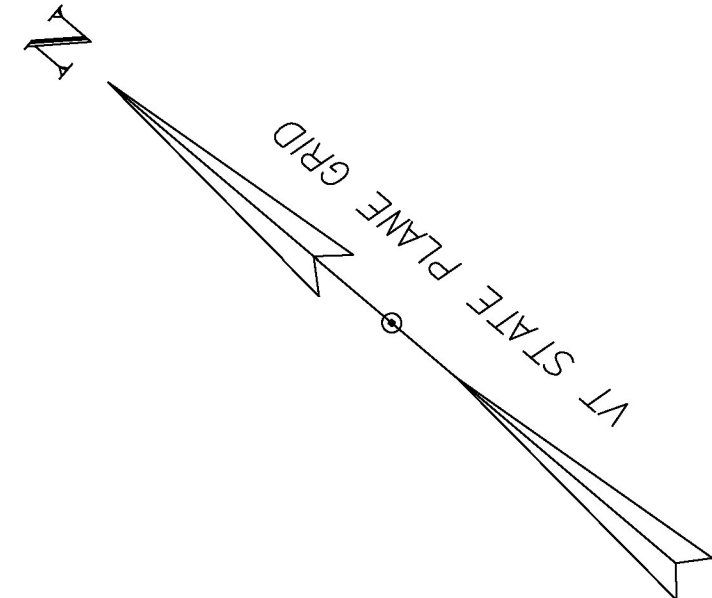
SOIL CLASSIFICATION
 SHEEPSCOT & CROGHAN
 FINE SANDY LOAM
 0 - 8% SLOPES
 "K FACTOR" 0.17
 NOT HIGHLY ERODIBLE

SOIL CLASSIFICATION
 RUMNEY
 FINE SANDY LOAM
 0 - 2% SLOPES
 "K FACTOR" 0.24
 NOT HIGHLY ERODIBLE
 FREQUENTLY FLOODED

SOIL CLASSIFICATION
 COLTON
 FINE SANDY LOAM
 15 - 25% SLOPES
 "K FACTOR" 0.24
 HIGHLY ERODIBLE

LEGEND
 [Shaded Area] AREA REQUIRING REVEGETATION

MATCHLINE - STA. 216+50.00 SEE LAYOUT SHEET 2



- NOTES:**
1. THESE PLANS SHOW A CONCEPTUAL EROSION CONTROL PLAN, THE CONTRACTOR MUST SUBMIT A TEMPORARY EROSION CONTROL PLAN FOR APPROVAL.
 2. WHEN NECESSITATED BY THE SEQUENCE OF CONSTRUCTION OR AS DIRECTED BY THE ENGINEER, THE CONTRACTOR SHALL INSTALL ADDITIONAL EROSION CONTROL MEASURES THAN THOSE CALLED FOR IN THE APPROVED EROSION CONTROL PLAN.
 3. REFER TO TEMPORARY EROSION CONTROL DETAIL SHEETS FOR ADDITIONAL DETAILS.
 4. SILT FENCE SHALL NOT BE INSTALLED ACROSS CONTOURS.
 5. STABILIZED CONSTRUCTION ENTRANCE TO BE INSTALLED IF DEEMED NECESSARY BY THE ENGINEER.

PROJECT NAME: LUDLOW
 PROJECT NUMBER: HES SGNL(44)
 FILE NAME: t13b020_nul.dgn
 PROJECT LEADER: P. COBURN
 DESIGNED BY: M. BOGACZYK
 EPSC FINAL CONDITIONS SHEET 3
 PLOT DATE: 4/19/2017
 DRAWN BY: M. BOGACZYK
 CHECKED BY: P. COBURN
 SHEET 27 OF 43

