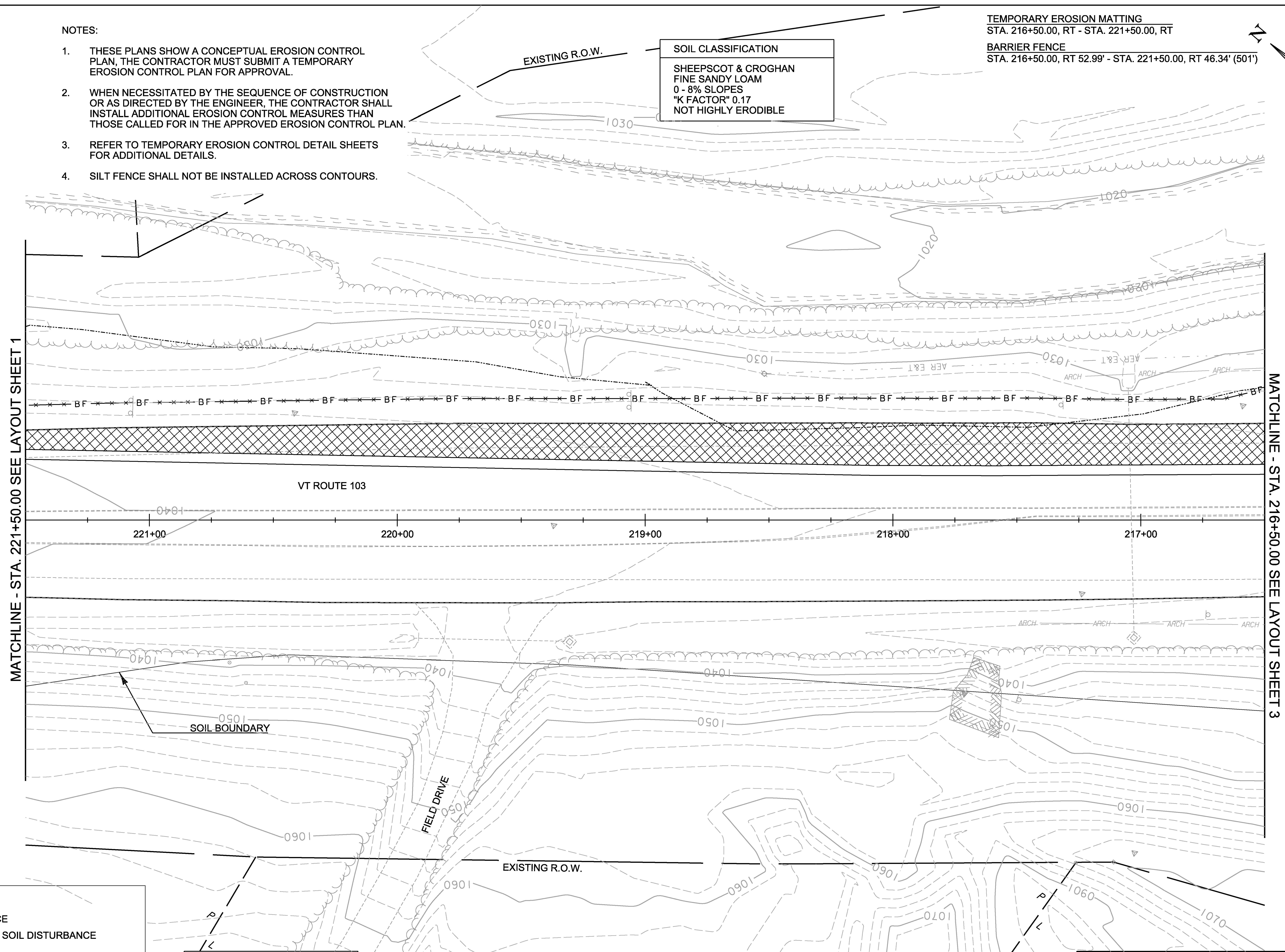
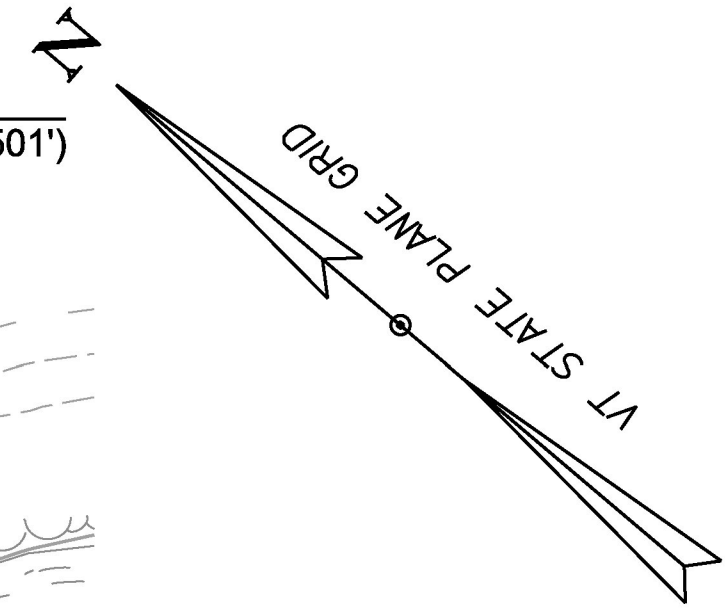


NOTES:

1. THESE PLANS SHOW A CONCEPTUAL EROSION CONTROL PLAN, THE CONTRACTOR MUST SUBMIT A TEMPORARY EROSION CONTROL PLAN FOR APPROVAL.
2. WHEN NECESSITATED BY THE SEQUENCE OF CONSTRUCTION OR AS DIRECTED BY THE ENGINEER, THE CONTRACTOR SHALL INSTALL ADDITIONAL EROSION CONTROL MEASURES THAN THOSE CALLED FOR IN THE APPROVED EROSION CONTROL PLAN.
3. REFER TO TEMPORARY EROSION CONTROL DETAIL SHEETS FOR ADDITIONAL DETAILS.
4. SILT FENCE SHALL NOT BE INSTALLED ACROSS CONTOURS.

TEMPORARY EROSION MATTING
 STA. 216+50.00, RT - STA. 221+50.00, RT
 BARRIER FENCE
 STA. 216+50.00, RT 52.99' - STA. 221+50.00, RT 46.34' (501')

SOIL CLASSIFICATION
 SHEEPSKOT & CROGHAN
 FINE SANDY LOAM
 0 - 8% SLOPES
 "K FACTOR" 0.17
 NOT HIGHLY ERODIBLE



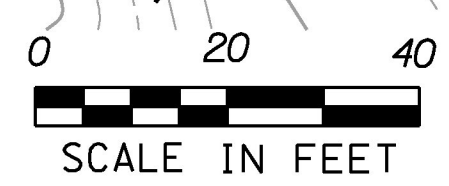
MATCHLINE - STA. 221+50.00 SEE LAYOUT SHEET 1

MATCHLINE - STA. 216+50.00 SEE LAYOUT SHEET 3

LEGEND

	SILT FENCE
	LIMITS OF SOIL DISTURBANCE
	EROSION MATTING
	BARRIER FENCE
	PROJECT DEMARCATION FENCE
	FABRIC DROP INLET PROTECTION

SOIL CLASSIFICATION
 COLTON
 FINE SANDY LOAM
 15 - 25% SLOPES
 "K FACTOR" 0.24
 HIGHLY ERODIBLE



PROJECT NAME: LUDLOW	PLOT DATE: 4/25/2017
PROJECT NUMBER: HES SGNL(44)	DRAWN BY: M. BOGACZYK
FILE NAME: t13b020_nul.dgn	CHECKED BY: P. COBURN
PROJECT LEADER: P. COBURN	SHEET 23 OF 43
DESIGNED BY: M. BOGACZYK	
EPSC CONSTRUCTION CONDITIONS SHEET 2	