

GPS CONTROL POINTS

---HVCTRL #1---

BRIGADE AZ MK (2006)

NORTH = 326083.603
EAST = 1591965.727
ELEV. = 882.413

GENERAL LOCATION, LUDLOW, VT. TO REACH FROM THE INTERSECTION OF VT ROUTE 100 SOUTH (ANDOVER STREET) AND VT ROUTE 103 EAST (MAIN STREET) GO EAST ALONG MAIN STREET FOR 1.0 MI (1.61 KM) TO THE SITE OF THE MARK ON THE RIGHT, OPPOSITE THE LAWN ON THE NORTHWEST SIDE OF SAMS STEAKHOUSE. THE MARK IS SET 3 CM (1 INCH) BELOW GROUND SURFACE IN THE TOP OF A 30 CM (12 INCH) DIAMETER CONCRETE MONUMENT ON THE NORTH EDGE OF THE SMALL FIELD BETWEEN THE TIMBER INN MOTEL AND THE BROOKHAVEN RESORT CONDOMINIUMS. IT IS 7.1 M (23.3 FT) SOUTHWEST OF AND ABOUT 0.3 M (1.0 FT) LOWER THAN THE CENTERLINE OF MAIN STREET, 21.5 M (70.5 FT) SOUTHEAST OF POLE NO 7/24/3000/1 WITH GUY, 14.9 M (48.9 FT) NORTHWEST OF POLE NO 7/25/2, 14.1 M (46.3 FT) EAST OF A 4 CM DIAMETER IRON PIPE WHICH PROJECTS 0.5 M (1.6 FT) ABOVE GROUND SURFACE, 26.2 M (86.0 FT) EAST NORTHEAST OF THE NORTHEAST CORNER OF A WOODEN FENCE ENCLOSURE FOR A TENNIS COURT, AND 0.3 M (1.0 FT) NORTHEAST OF A FIBERGLASS WITNESS POST.

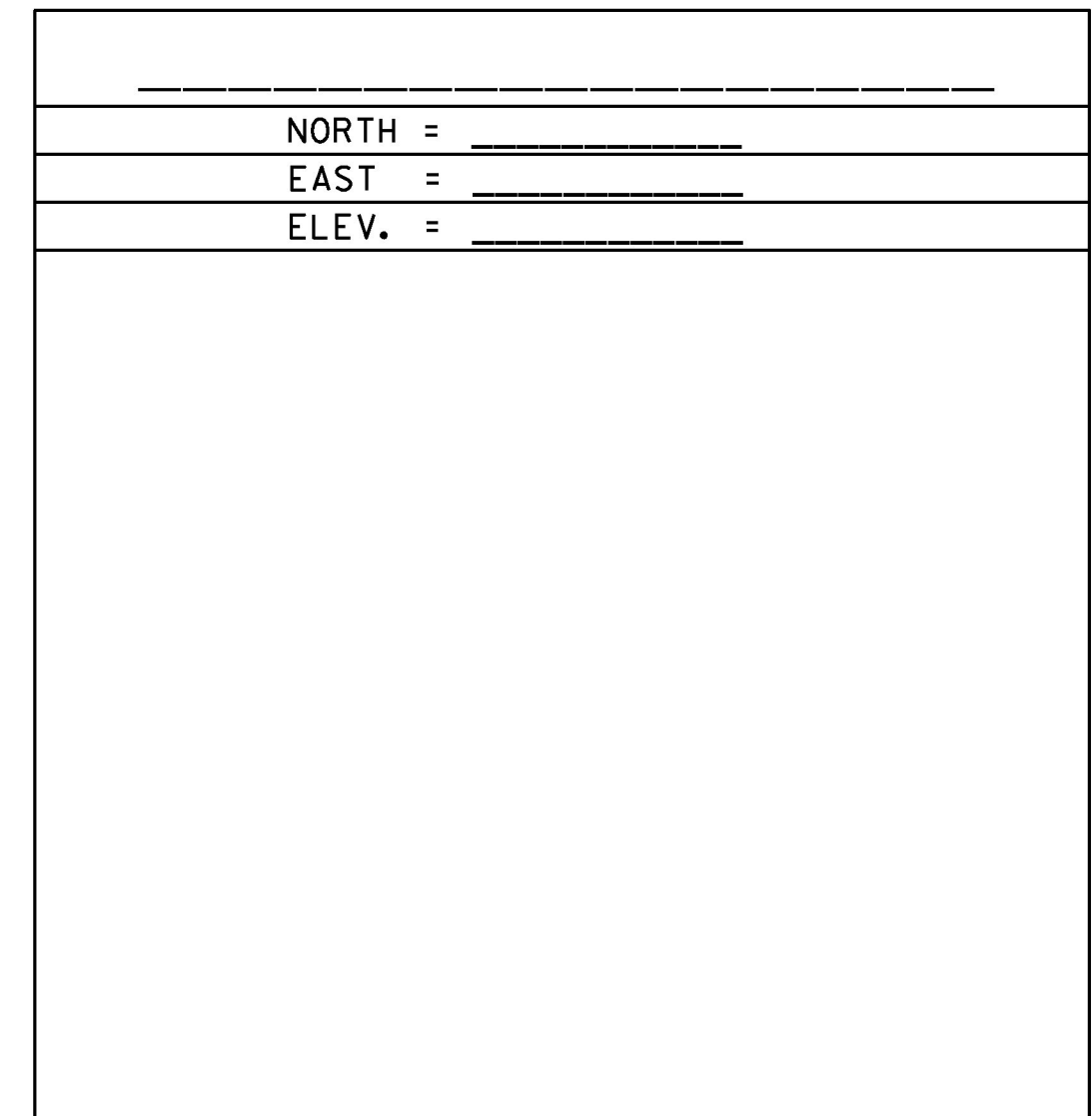
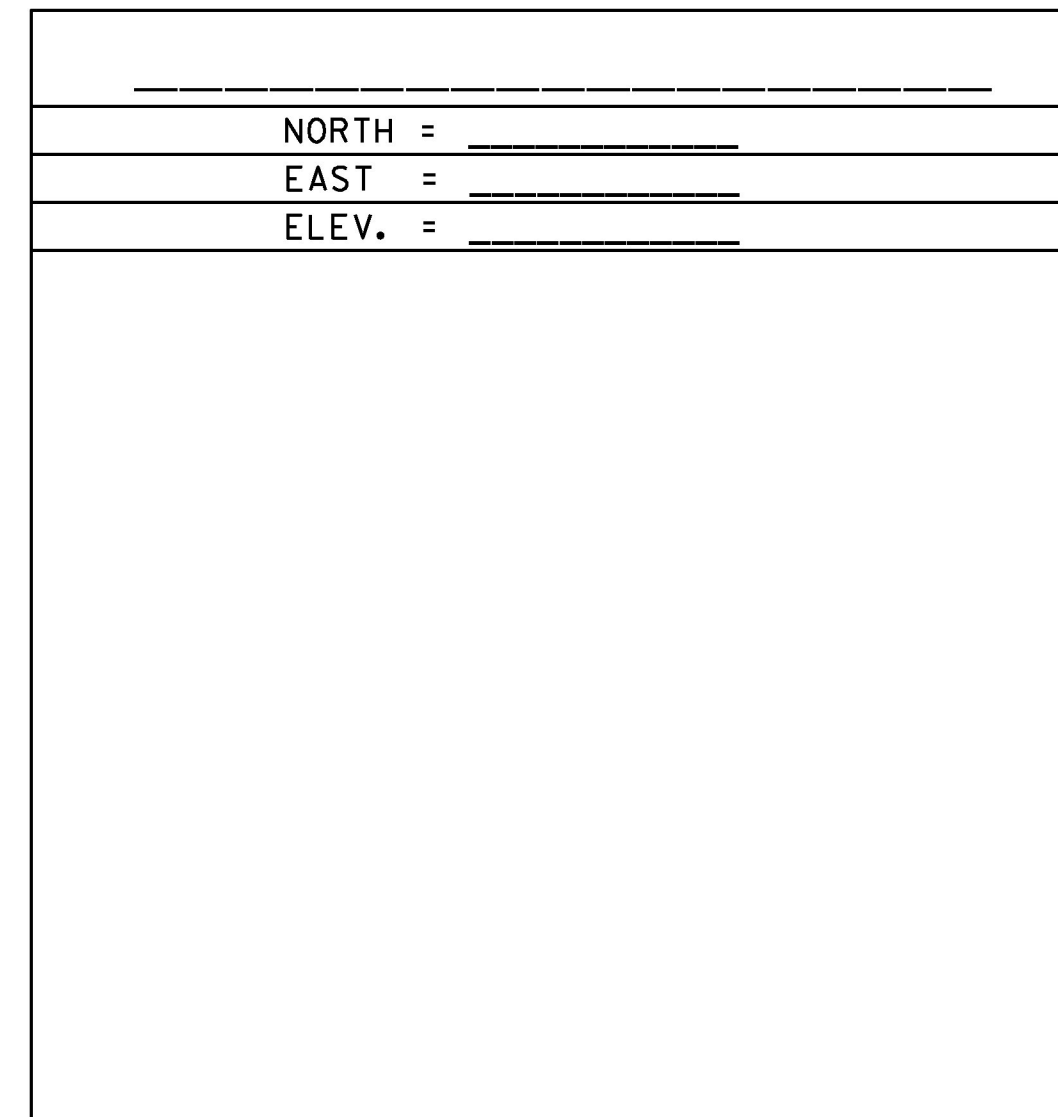
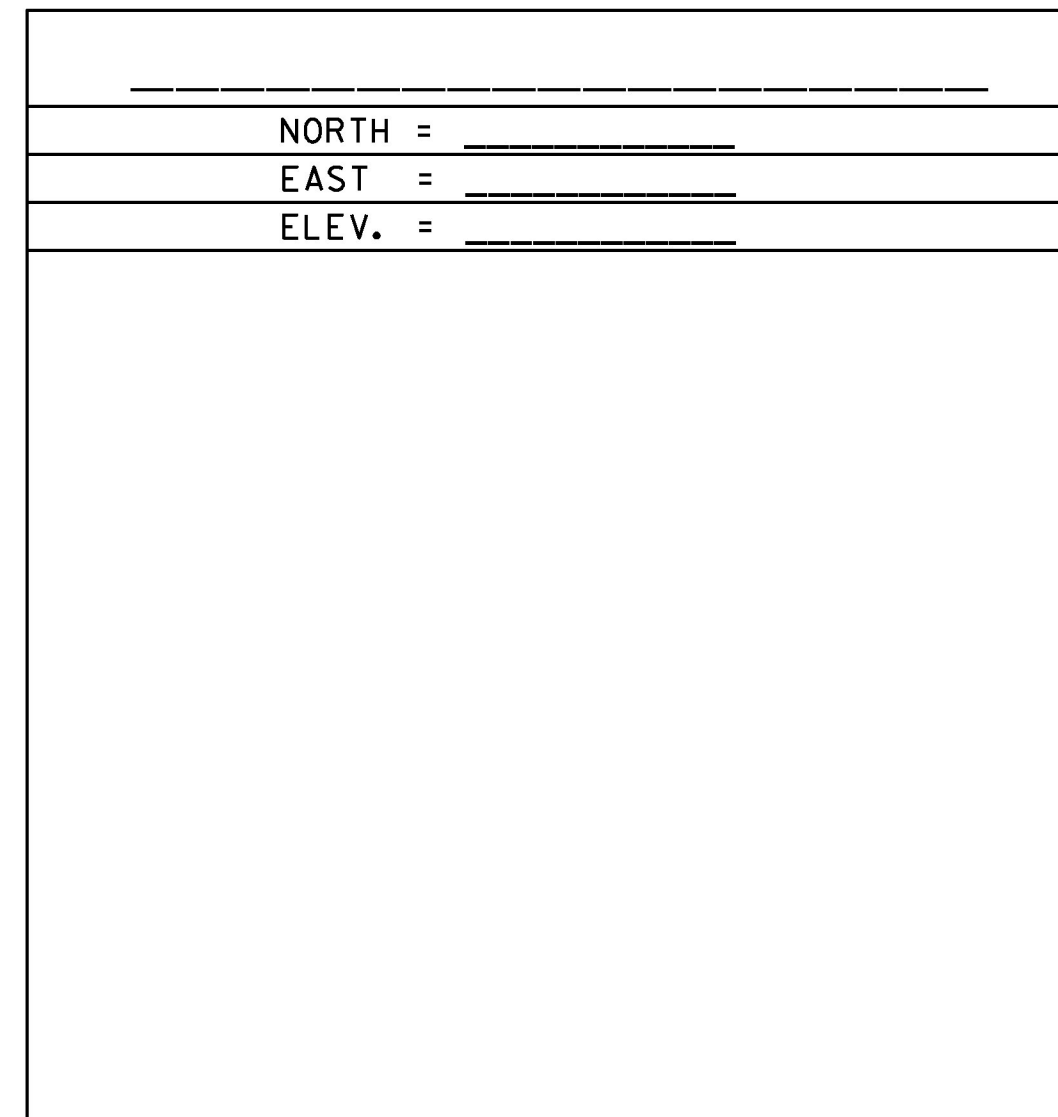
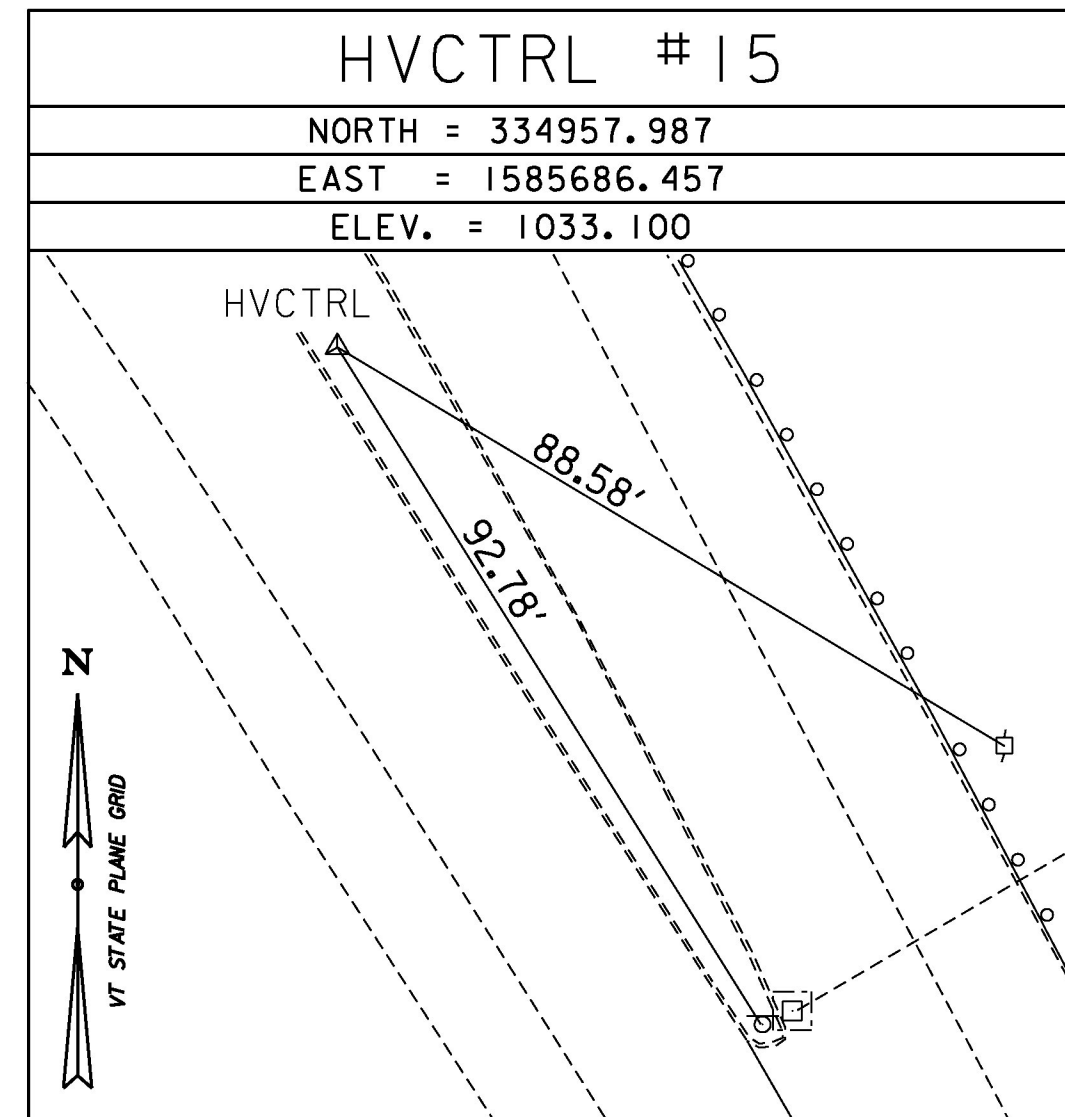
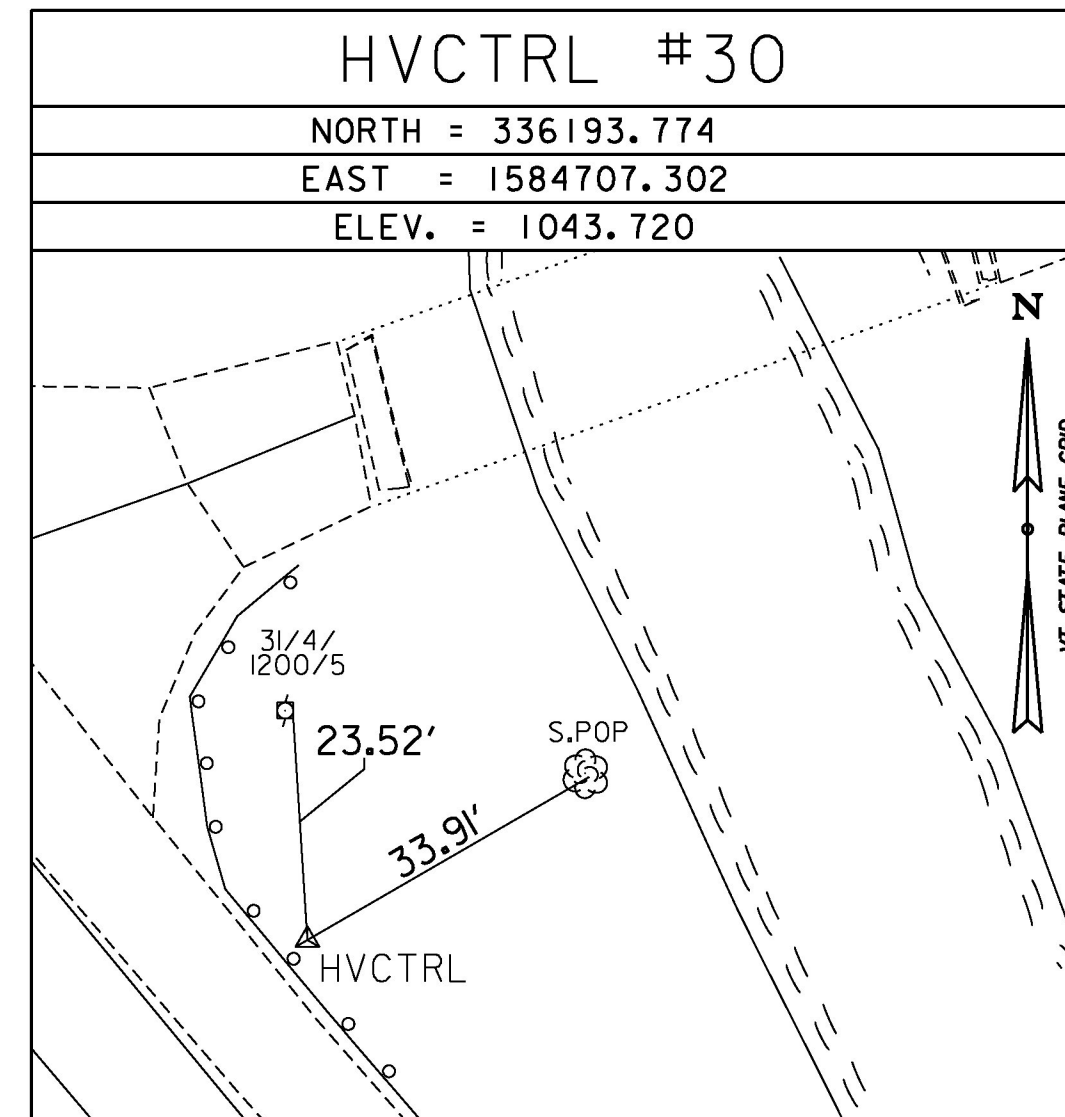
---HVCTRL #2---

BRIGADE

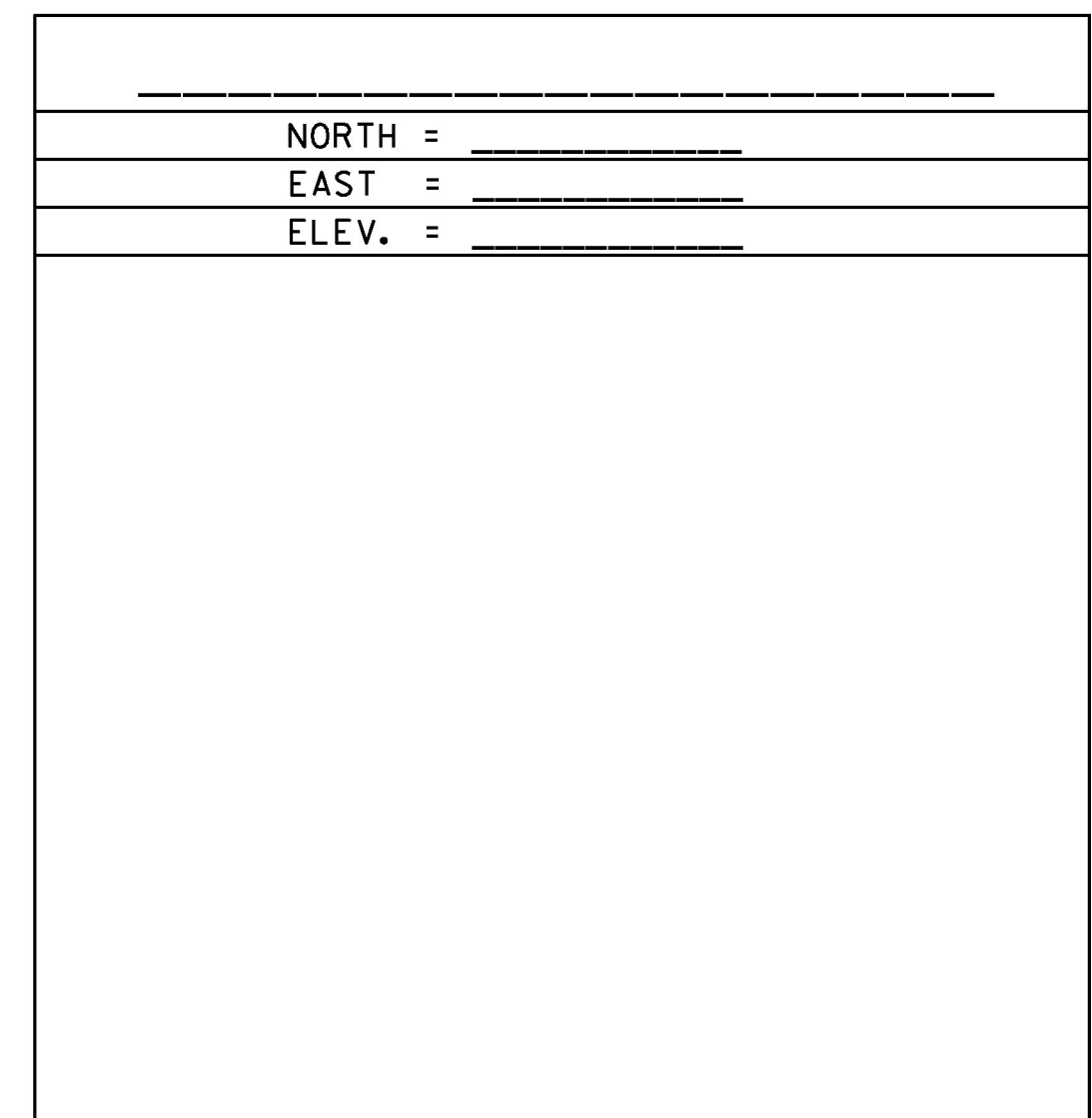
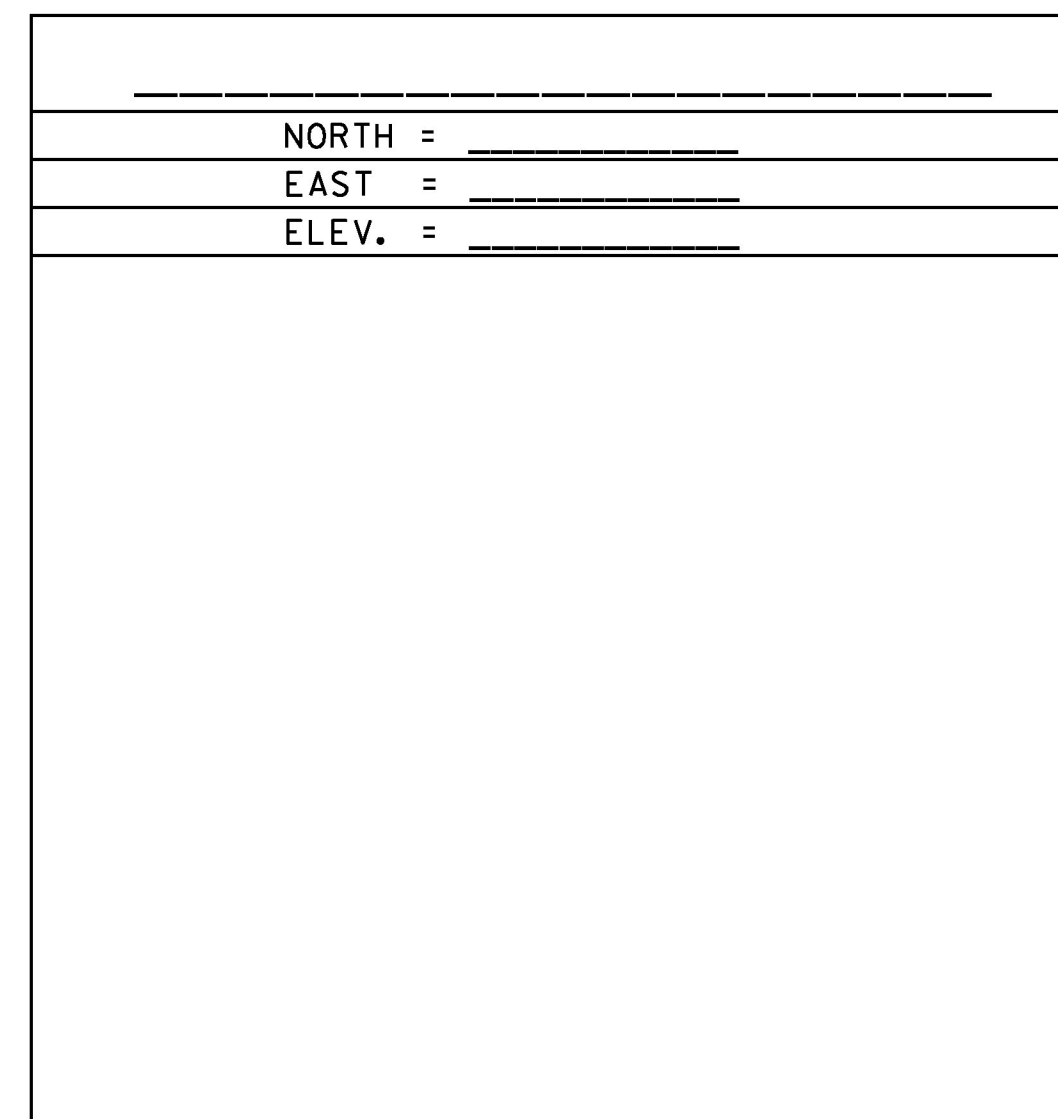
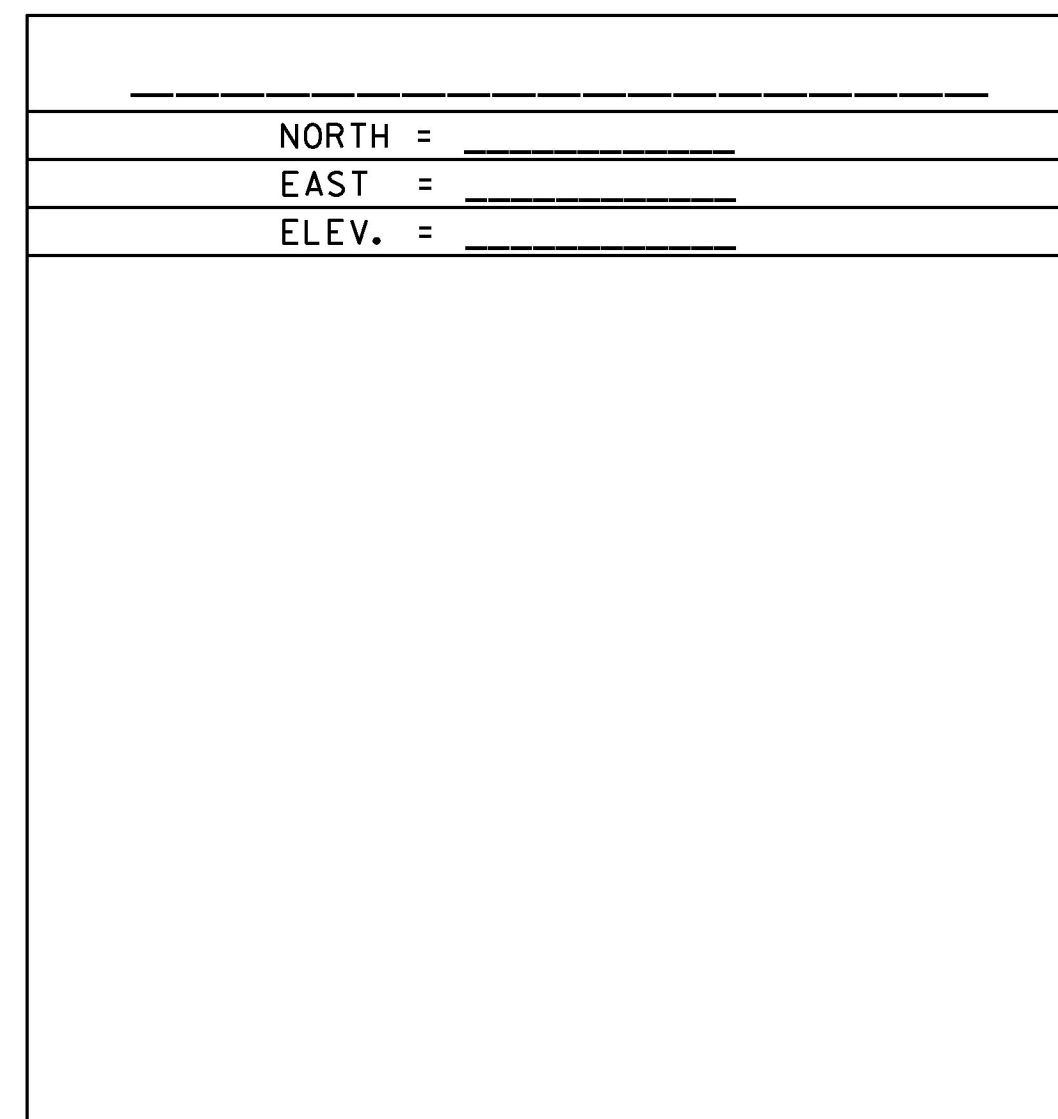
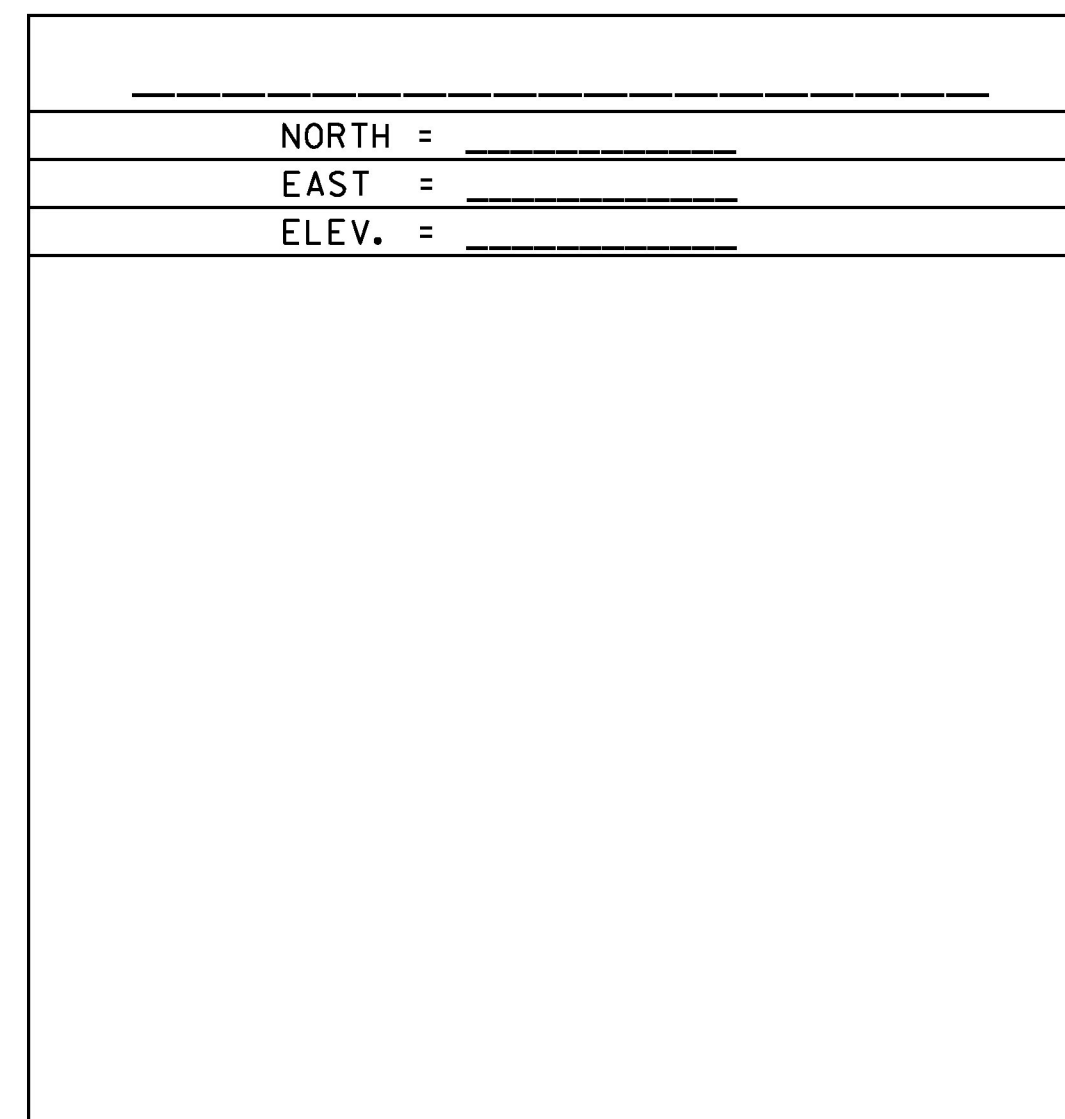
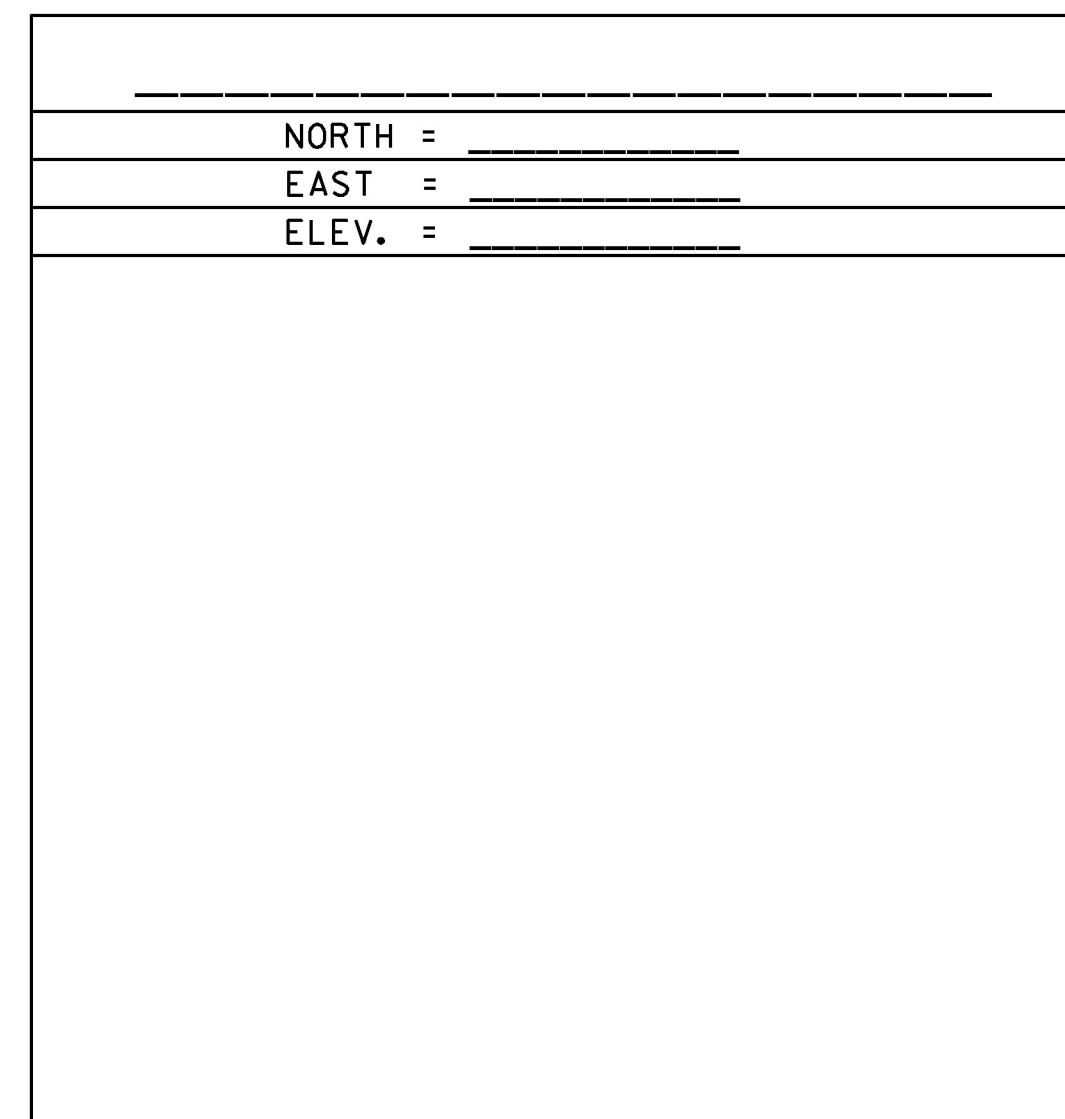
NORTH = 326830.100
EAST = 1590300.130
ELEV. = 900.560

GENERAL LOCATION, LUDLOW, VT. TO REACH FROM THE INTERSECTION OF VT ROUTE 100 SOUTH (ANDOVER STREET) AND VT ROUTE 103 EAST (MAIN STREET) GO EAST ALONG MAIN STREET FOR 0.7 MI (1.13 KM) TO THE SITE OF THE MARK ON THE LEFT. THE MARK IS A CHISELED CROSS CUT IN THE TOP OF THE WEST SIDE OF THE RIM FOR A 60 CM (24 INCH) DIAMETER MANHOLE, IN THE CONCRETE SIDEWALK SOUTHWEST OF BLACK RIVER HIGH SCHOOL. IT IS 5.7 M (18.7 FT) NORTHEAST OF AND ABOUT 0.2 M (0.7 FT) HIGHER THAN THE CENTERLINE OF MAIN STREET, 0.7 M (2.3 FT) NORTHEAST OF THE SOUTHWEST EDGE OF THE SIDEWALK CURB, 9.1 M (29.9 FT) SOUTHEAST OF POLE NO 9S/2300/185 WITH GUY, 15.9 M (52.2 FT) SOUTH OF THE SOUTHEAST CORNER OF A BRICK PLANTER WITH MARBLE BLACK RIVER HIGH SCHOOL SIGN, 36.8 M (120.7 FT) WEST NORTHWEST OF THE CENTERLINE OF THE SCHOOL EXIT DRIVE, 49.6 M (162.7 FT) EAST OF THE CENTERLINE OF THE SCHOOL ENTRANCE DRIVE, AND 30.4 M (99.7 FT) WEST OF A 60 CM (24 INCH) MAPLE.

TRAVERSE TIES



ALIGNMENT TIES



DATUM	
VERTICAL	NAVD 88
HORIZONTAL	NAD 83(1996)
ADJUSTMENT	COMPASS

PROJECT NAME:	LUDLOW	PLOT DATE:	4/19/2017
PROJECT NUMBER:	HES SGNL(44)	PROJECT LEADER:	P. COBURN
FILE NAME:	I3b020_tie01.dgn	DESIGNED BY:	M. BOGACZYK
TIE SHEET		CHECKED BY:	P. BEYOR
		SHEET	5 OF 43