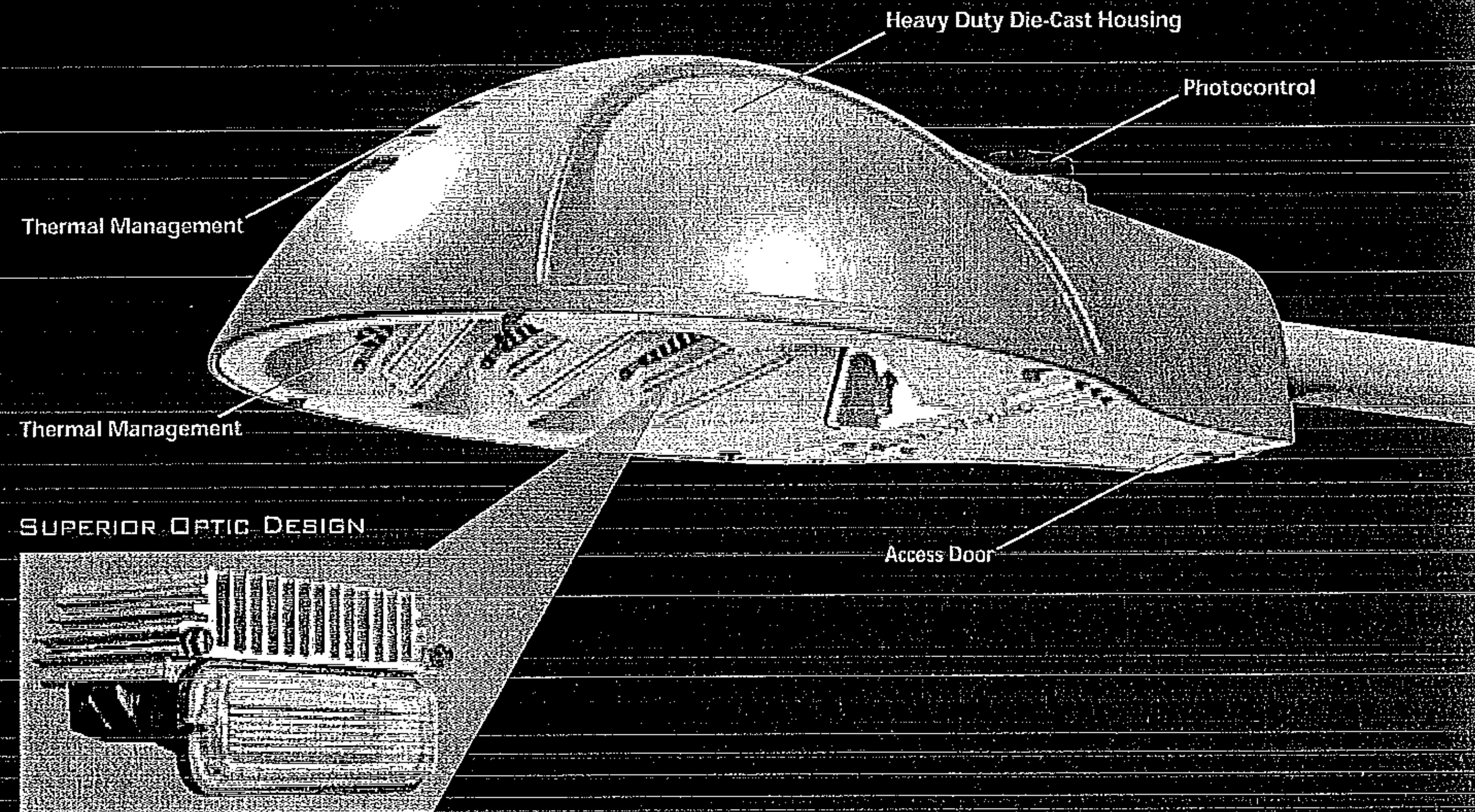
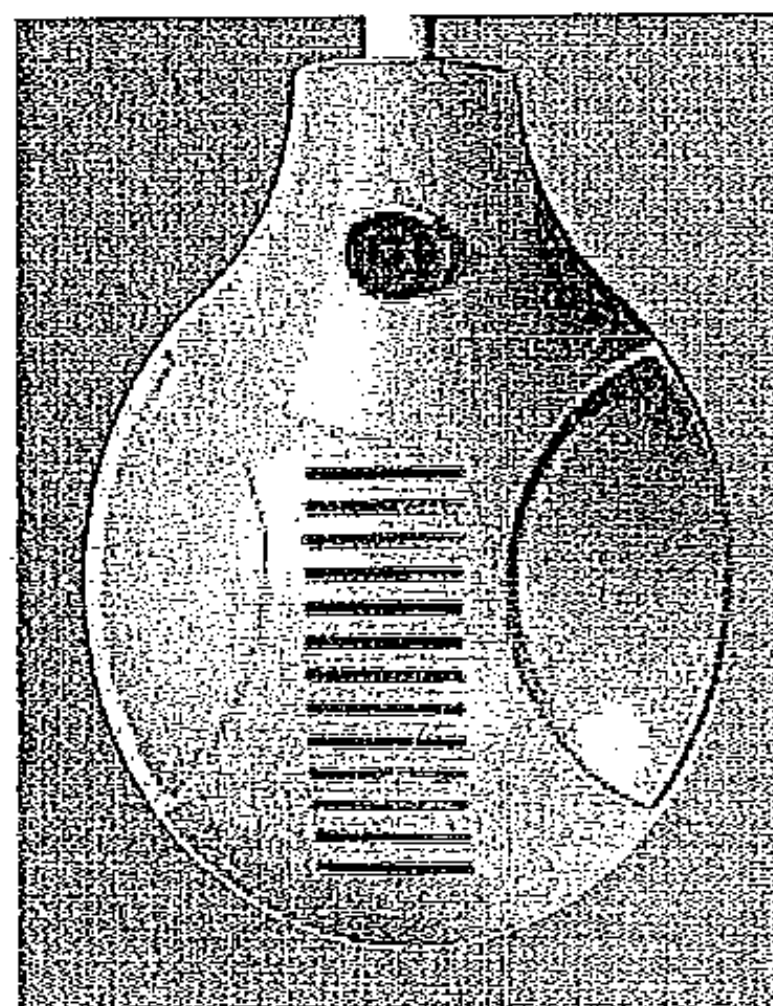


# LEGENDARY ENGINEERING

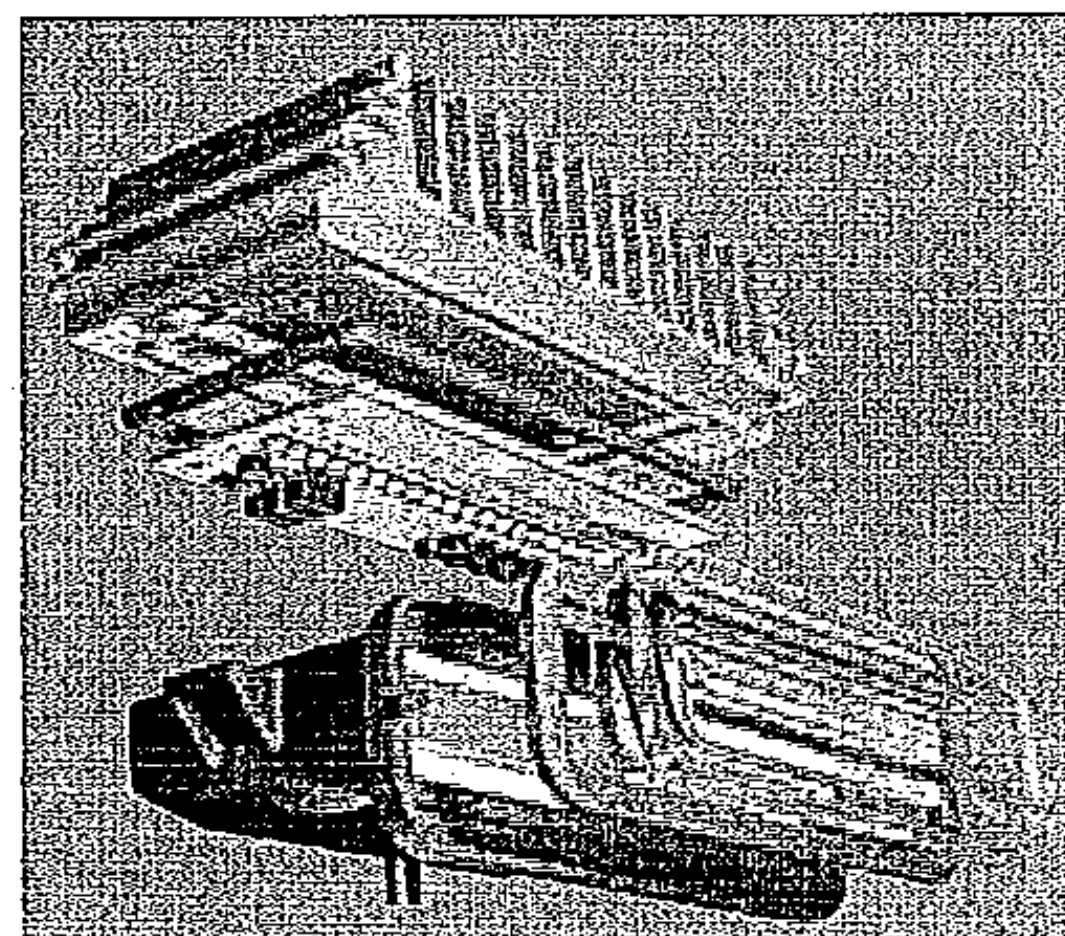


Heavy Duty Die-Cast Housing holds and protects electronic driver, optics and other luminaire components.

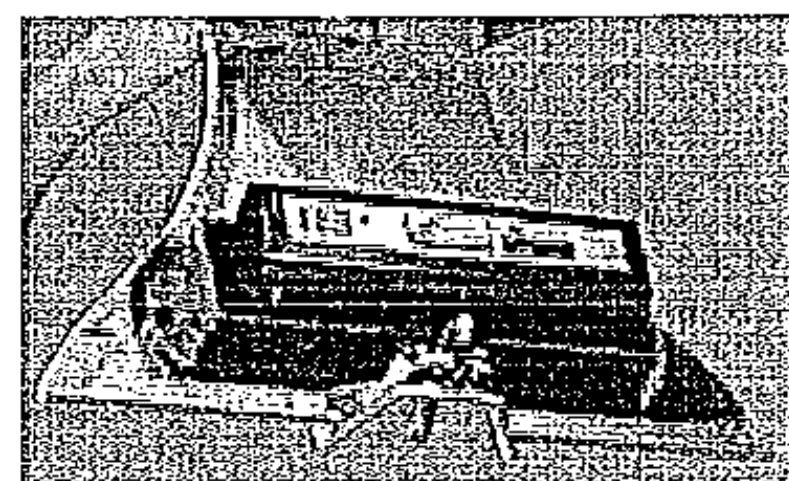
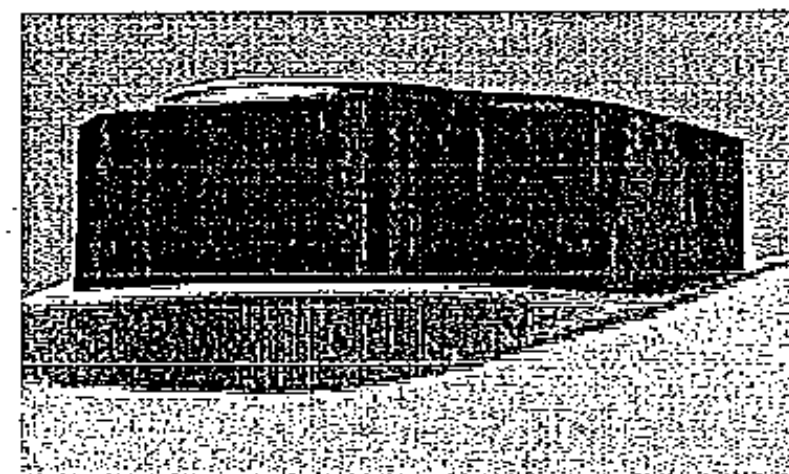


Thermal Management engineered to provide intricate heat sinking design allowing air convection and conduction to keep LEDs and Driver cool.

Superior Optical Design features precise optical control via high performance reflector and prismatic glass refractor lens.



Photocontrol saves energy and reduces costs with reliability and accurate light sensing.



Access Door provides tool-less access to LED driver, terminal block, surge module and arm mounting bolts.