

GPS CONTROL POINTS

---HVCTRL #1---
 P65 AZ MK
 NORTH = 616700.663
 EAST = 1443964.658
 ELEV. = NA

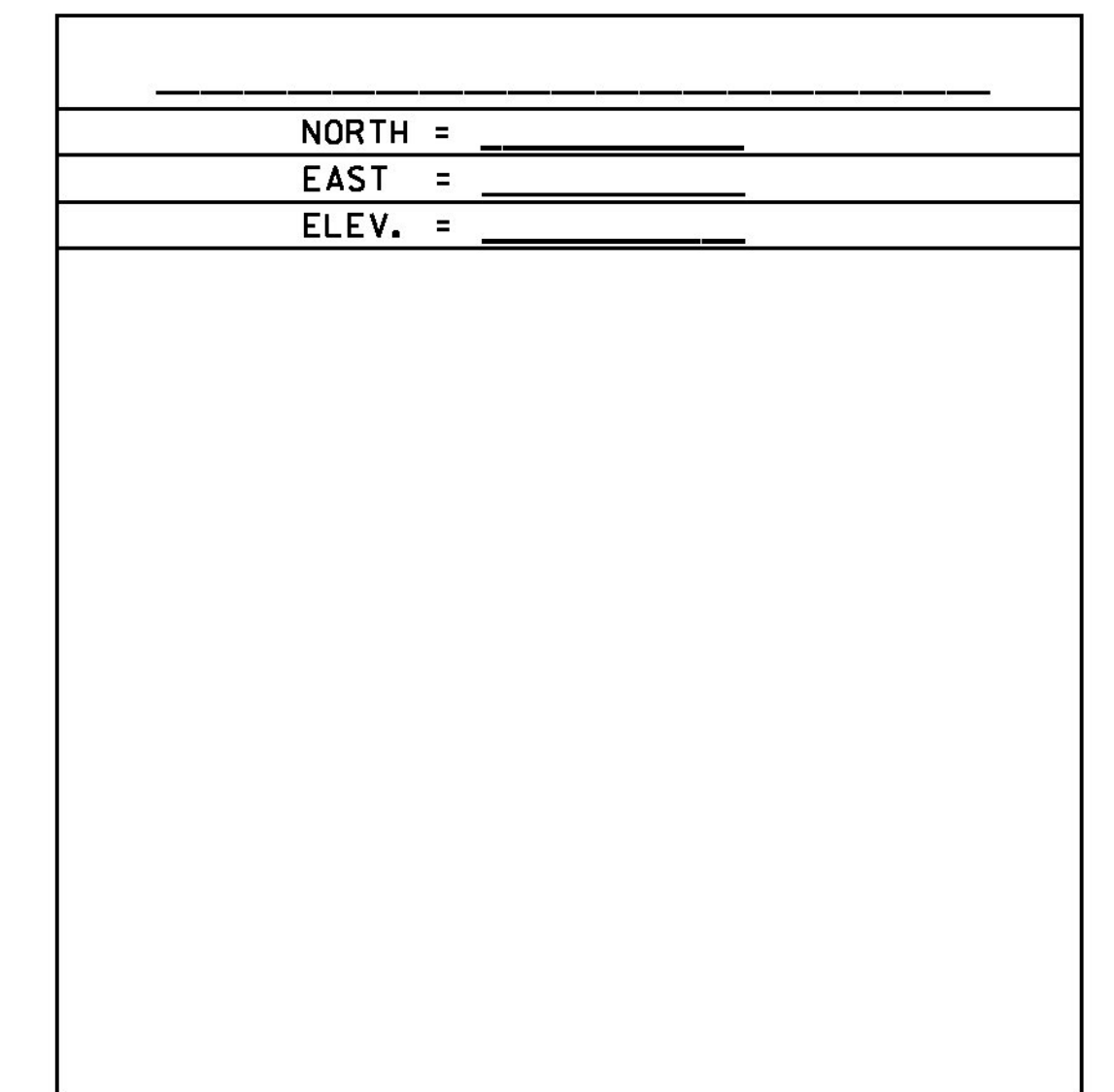
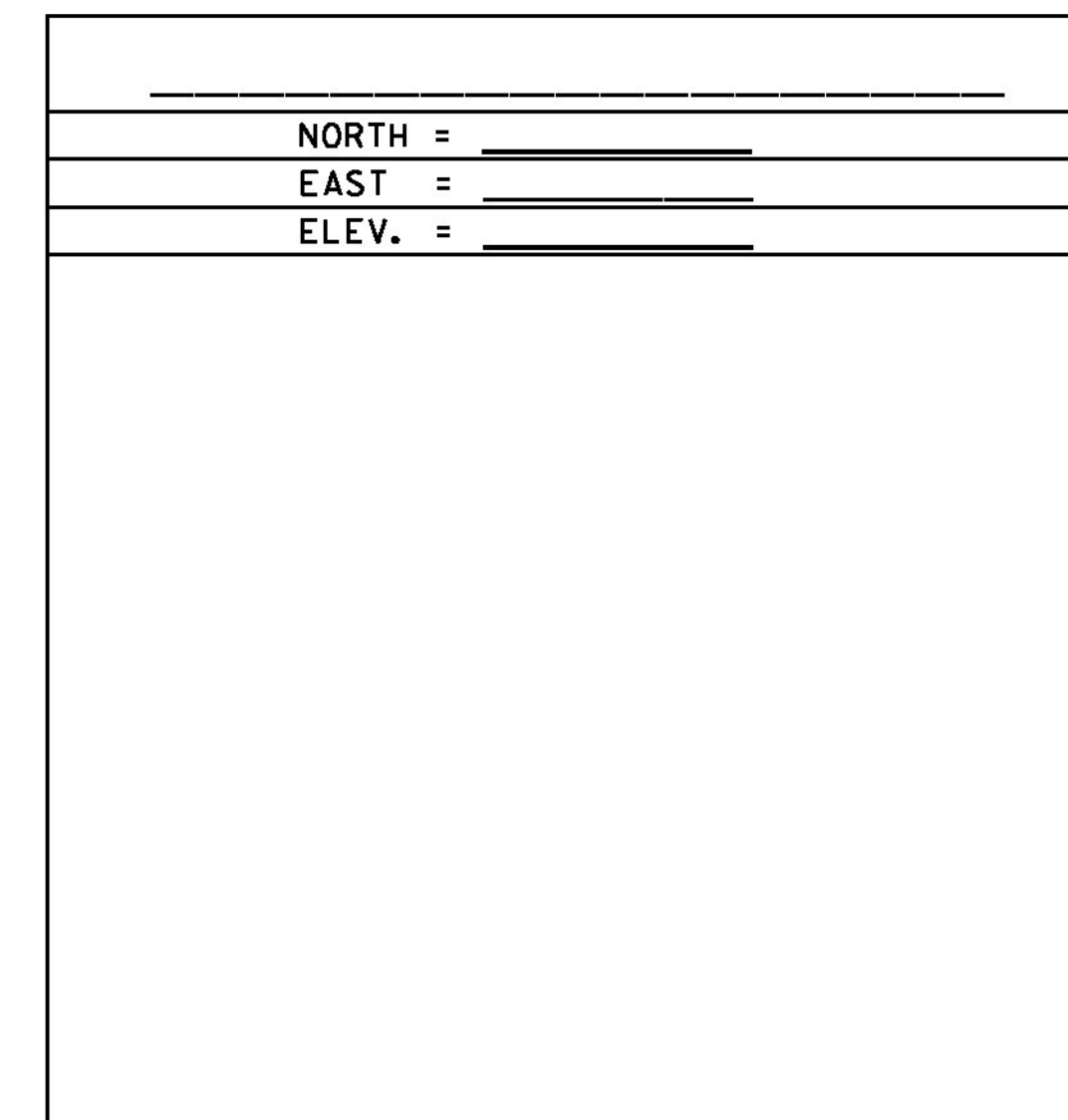
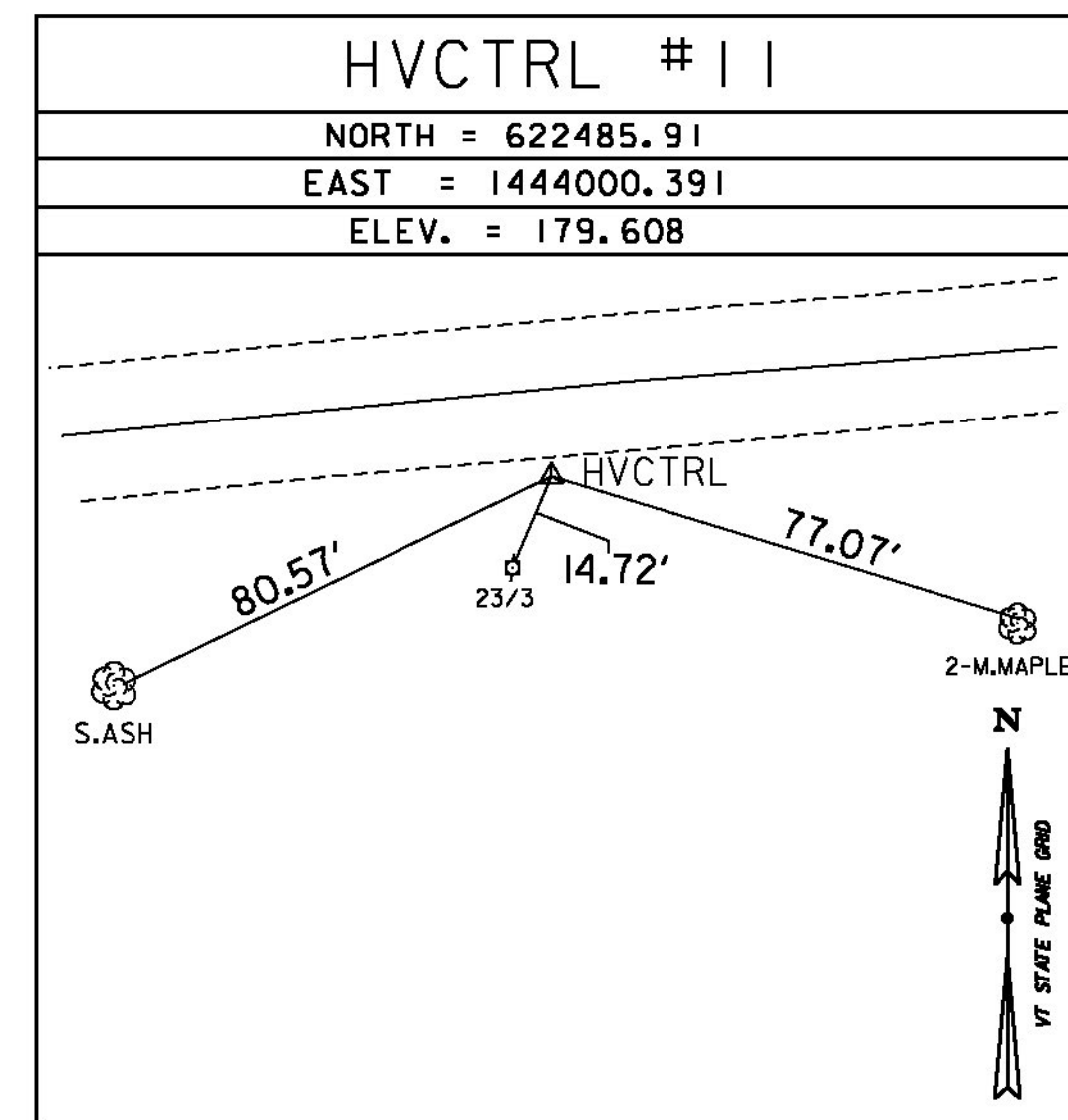
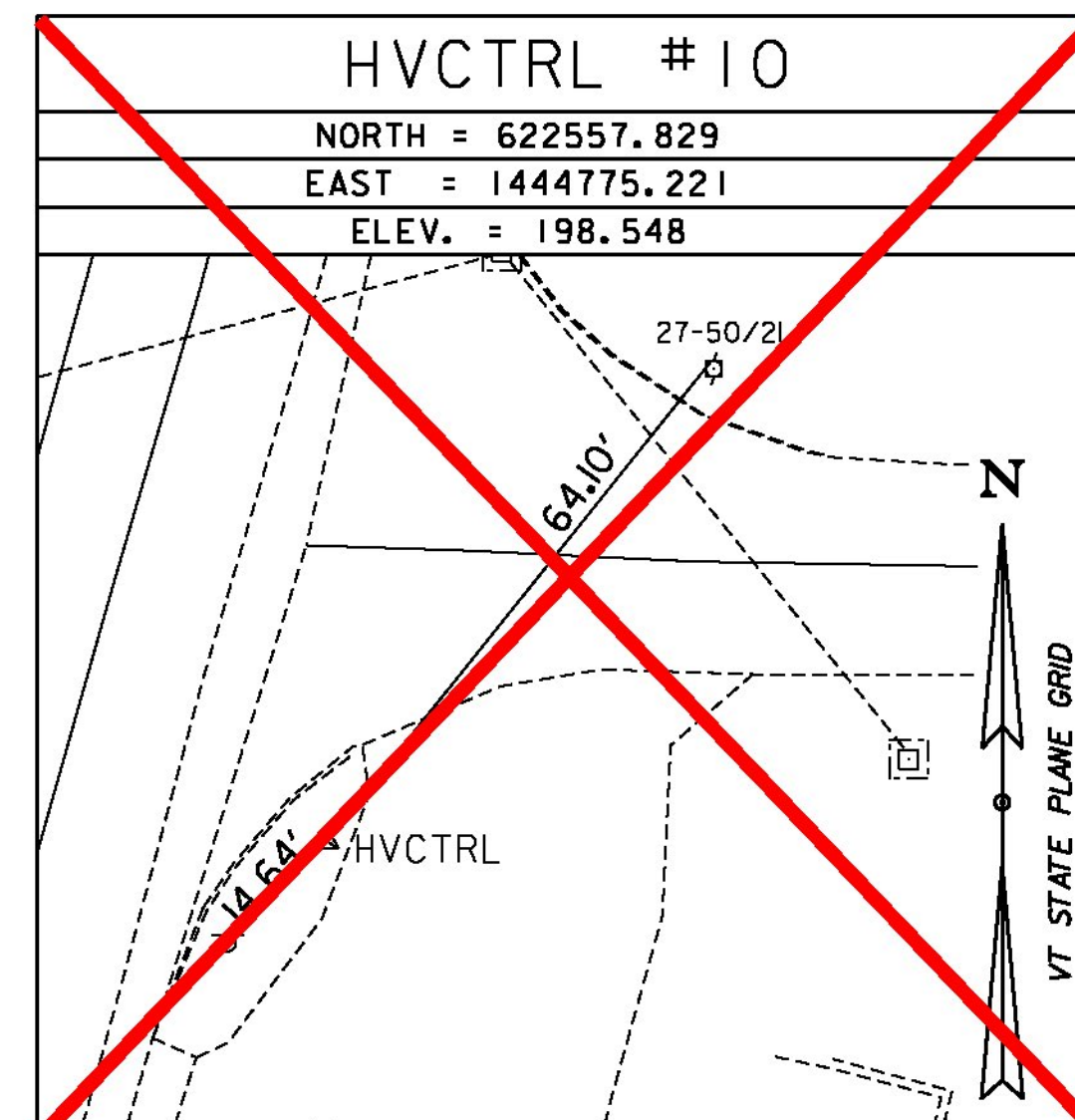
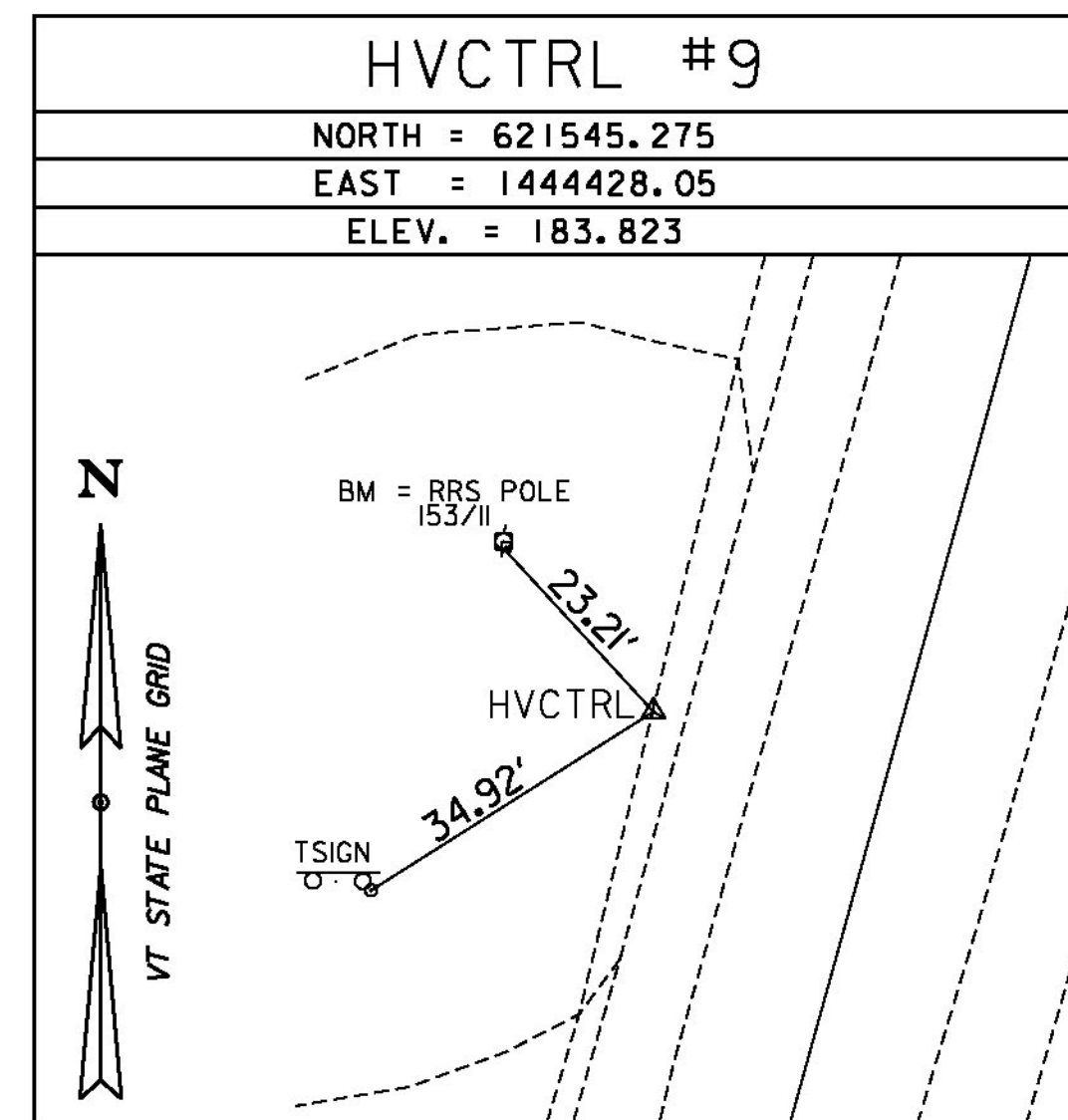
---HVCTRL #2---
 P 65
 NORTH = 614029.210
 EAST = 1445286.970
 ELEV. = 215.630

GENERAL LOCATION FERRISBURG, VERMONT. TO REACH FROM THE INTERSECTION OF VERMONT ROUTE 22A AND U.S. ROUTE 7 PROCEED NORTH ALONG U.S. ROUTE 7 FOR 0.5 MI (0.8 KM) TO TUPPERS CROSSING ROAD LEFT. PROCEED WEST ALONG TUPPERS CROSSING ROAD FOR 400 FT (121.9 M) TO THE MARK ON THE LEFT. THE MARK IS 110 FT (33.5 M) NORTHWEST OF A 24 IN BASS TREE, 107 FT (32.6 M) SOUTH OF THE CENTERLINE OF TUPPERS CROSSING ROAD AND 93 FT (28.3 M) SOUTH OF A FIBERGLASS WITNESS POST.

GENERAL LOCATION, VERGENNES, VT. TO REACH FROM THE INTERSECTION OF U.S.ROUTE 7 AND VT ROUTE 22A NORTHEAST OF VERGENNES GO SOUTH ALONG U.S.ROUTE 7 FOR 0.05 MI (0.08 KM) TO THE MARK ON THE RIGHT. THE MARK IS SET IN THE TOP OF A MASSIVE SLOPING ROCK OUTCROP. IT IS 17.0 M (55.8 FT) WEST OF AND ABOUT 3 M (9.8 FT) HIGHER THAN THE WEST EDGE OF PAVEMENT OF U.S.ROUTE 7. 98.8 M (324.1 FT) SOUTH OF THE SOUTH EDGE OF PAVEMENT OF VT ROUTE 22A, 13.4 M (44.0 FT) SOUTHWEST OF THE CENTER OF A DROP INLET, AND 3.6 M (11.8 FT) EAST OF A FIBERGLASS WITNESS POST.

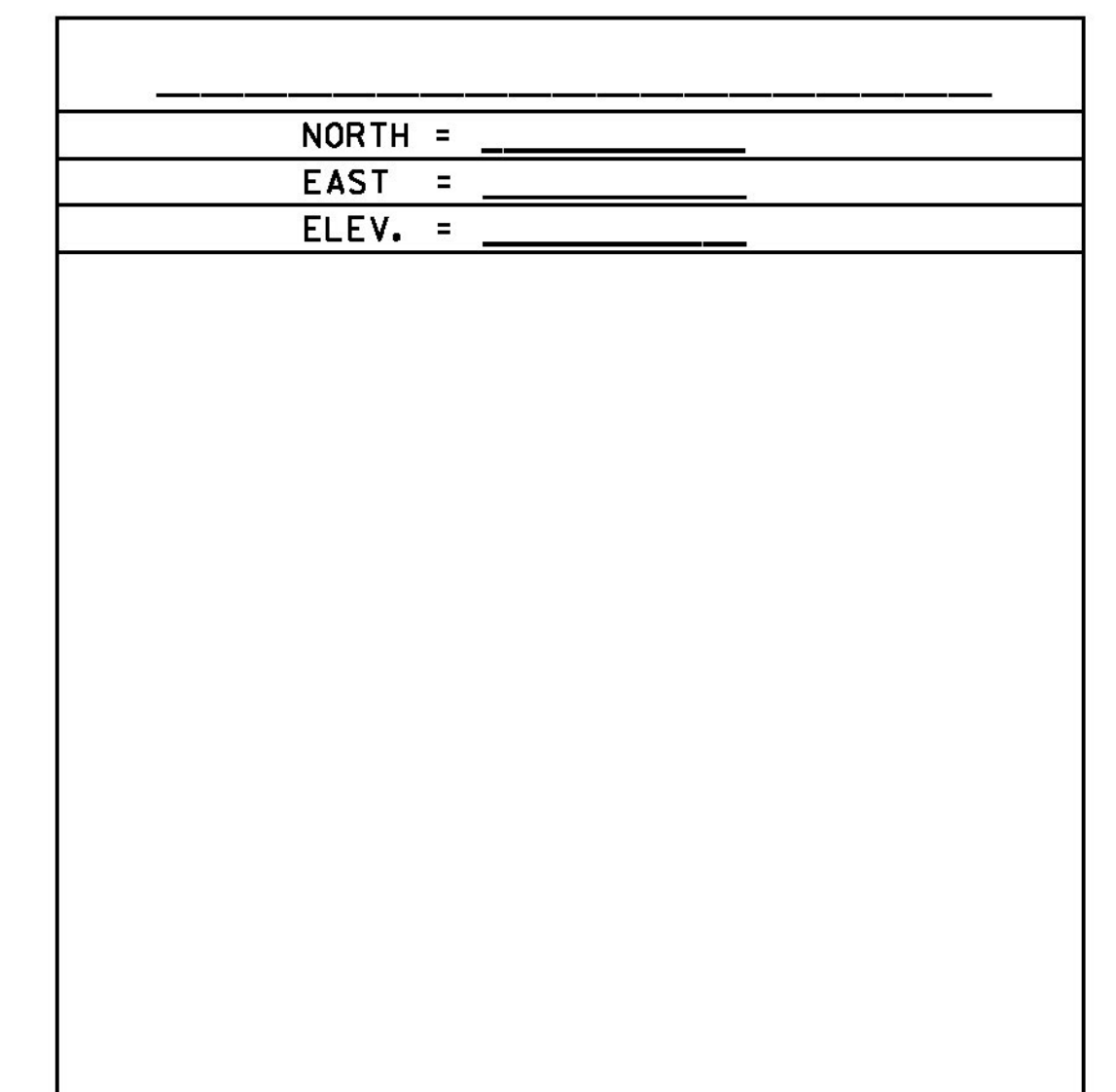
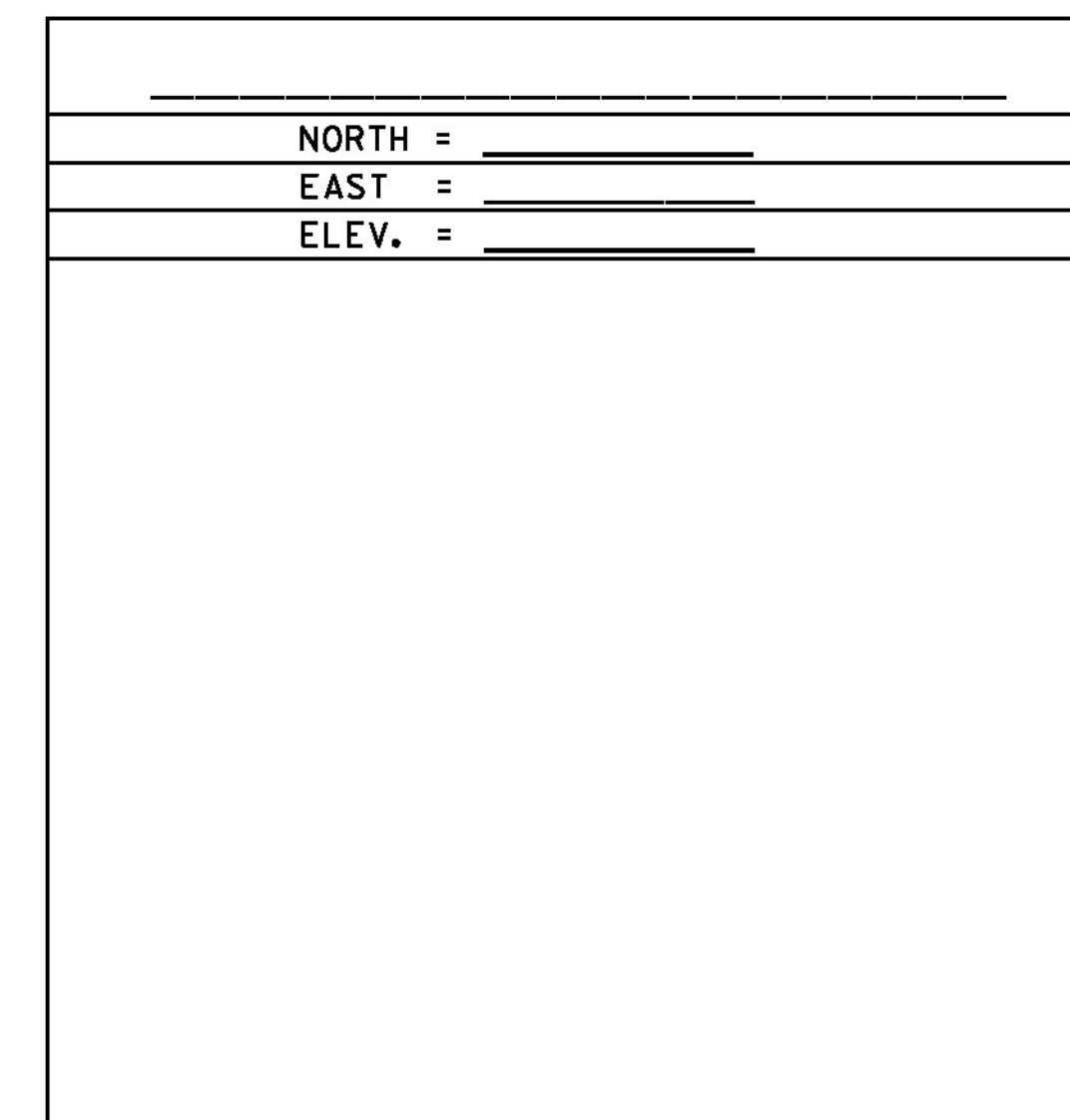
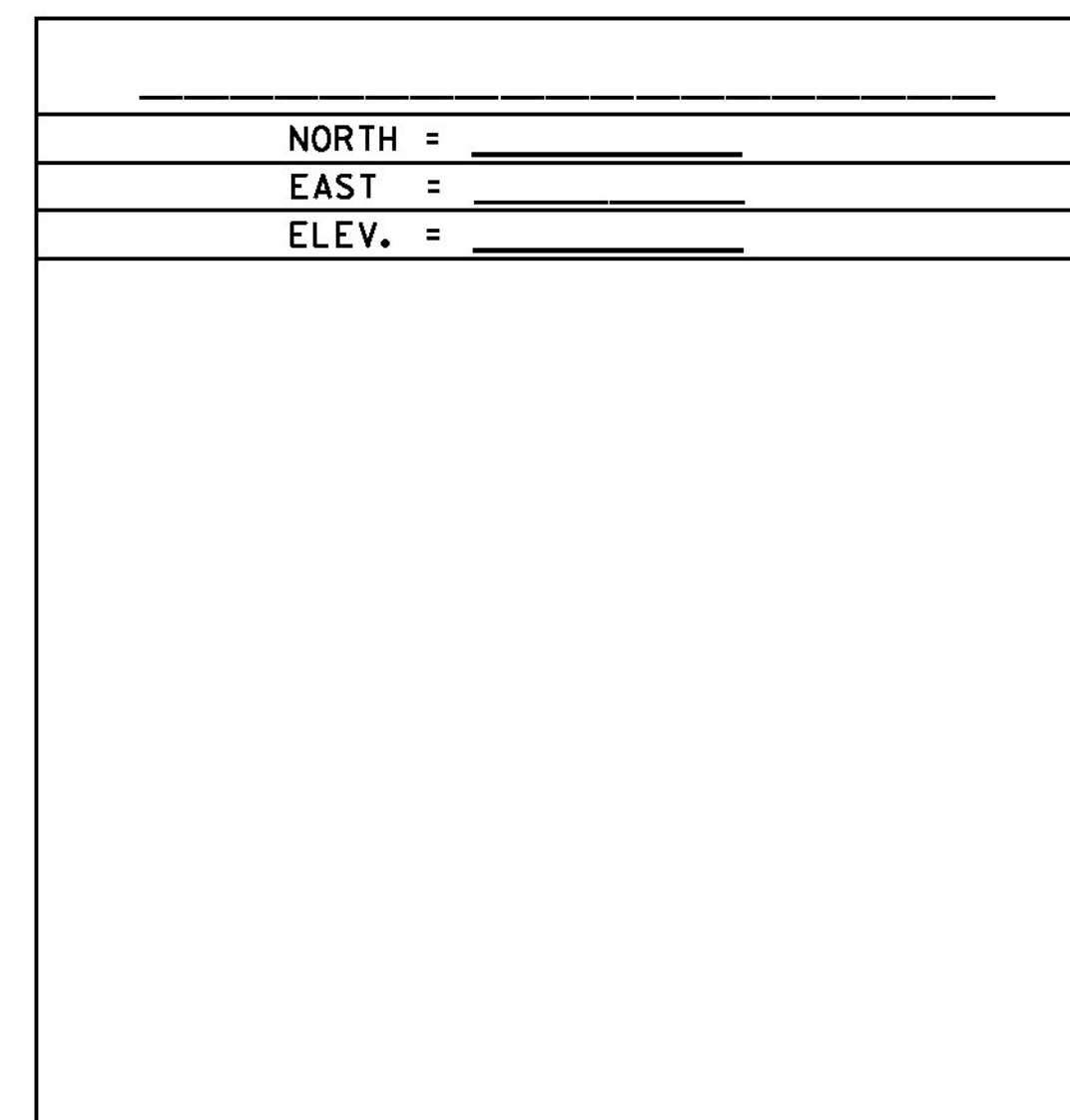
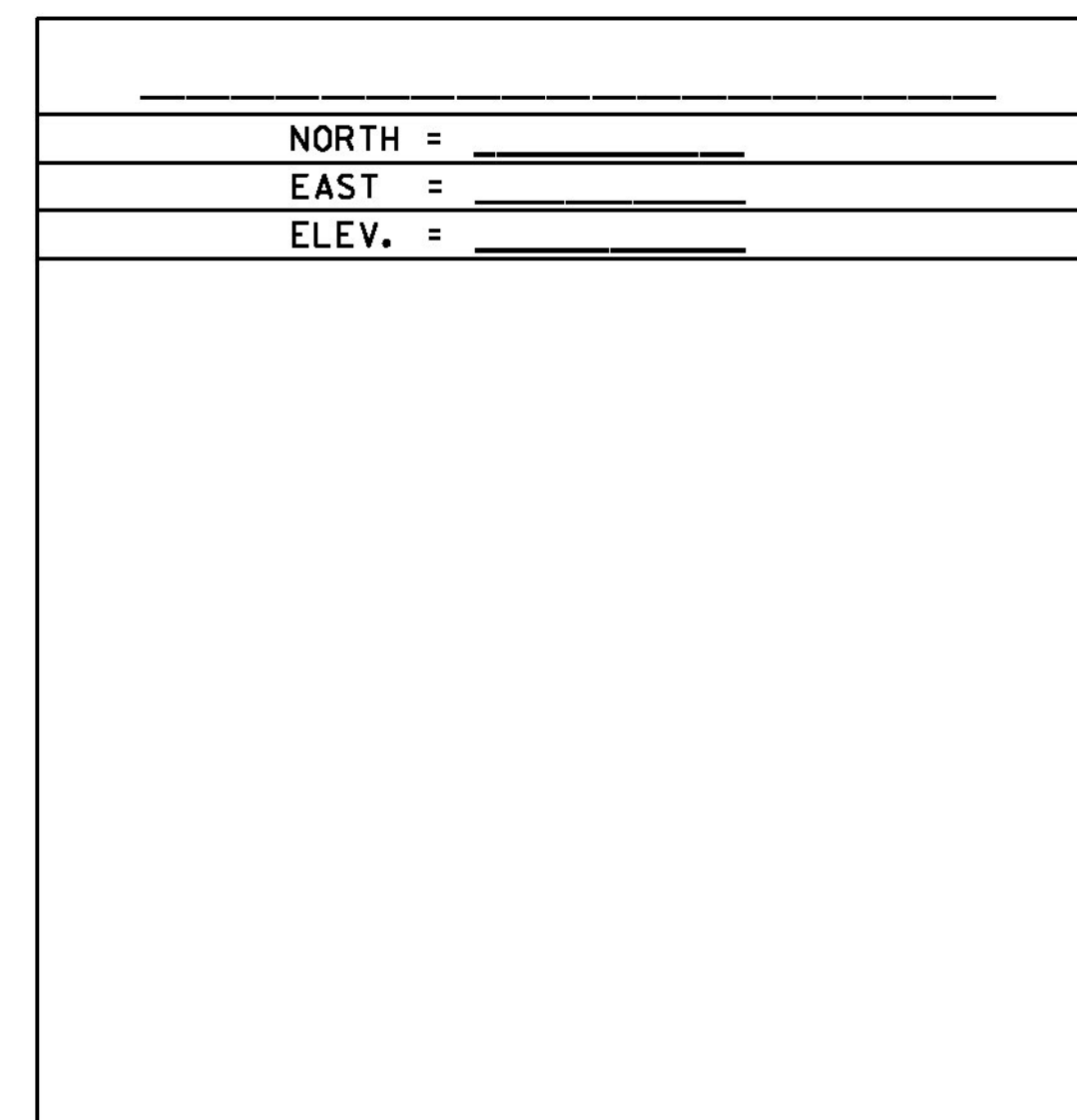
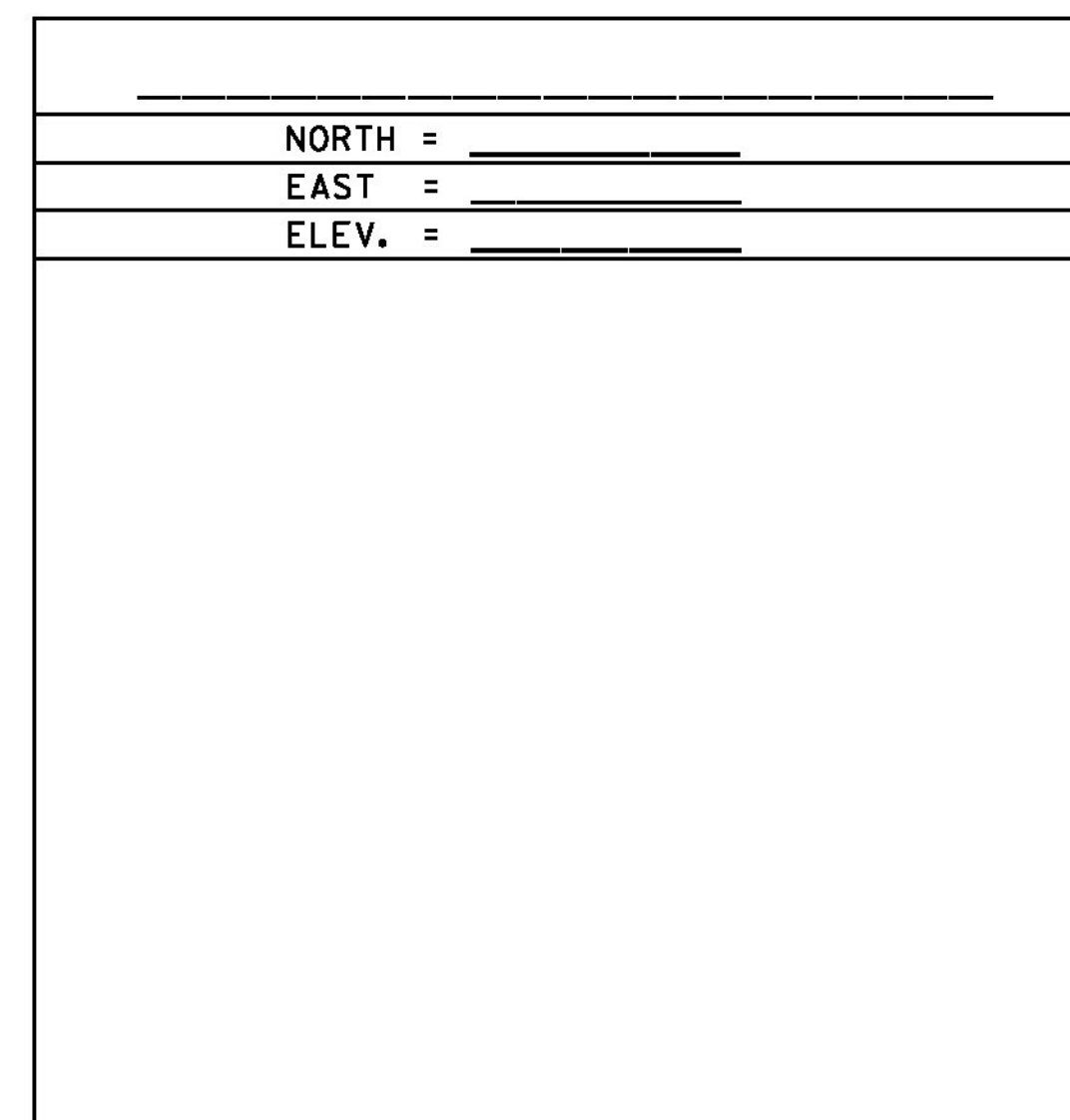
* GPS CONTROL POINTS REFERENCED FROM PROJECT "FERRISBURG RAIL 5306(I) - #09GI28, 08/26/2009"

TRAVERSE TIES



* TRAVERSE COMPLETED BY: L. ORVIS P.C./ R. BOCKUS 8/26/2009, UPDATED 2/19/2013

ALIGNMENT TIES



DATUM
 VERTICAL NAVD 88
 HORIZONTAL NAD 83 (2007)
 ADJUSTMENT COMPASS

PROJECT NAME: FERRISBURG
 PROJECT NUMBER: NHG SCNL (42)
 FILE NAME: I3b016\Survey\I3b016+1 PLOT DATE: 3/2/2016
 PROJECT LEADER: I. DEGUTIS DRAWN BY: S. DONOVAN
 DESIGNED BY: I. DEGUTIS CHECKED BY: P. BEYOR
 TIE SHEET SHEET 5 OF 22