



DATE	6/28/14
REV	1
DESCRIPTION	ADDED NOTES AND DIMENSIONS TO SPLICE DETAILS

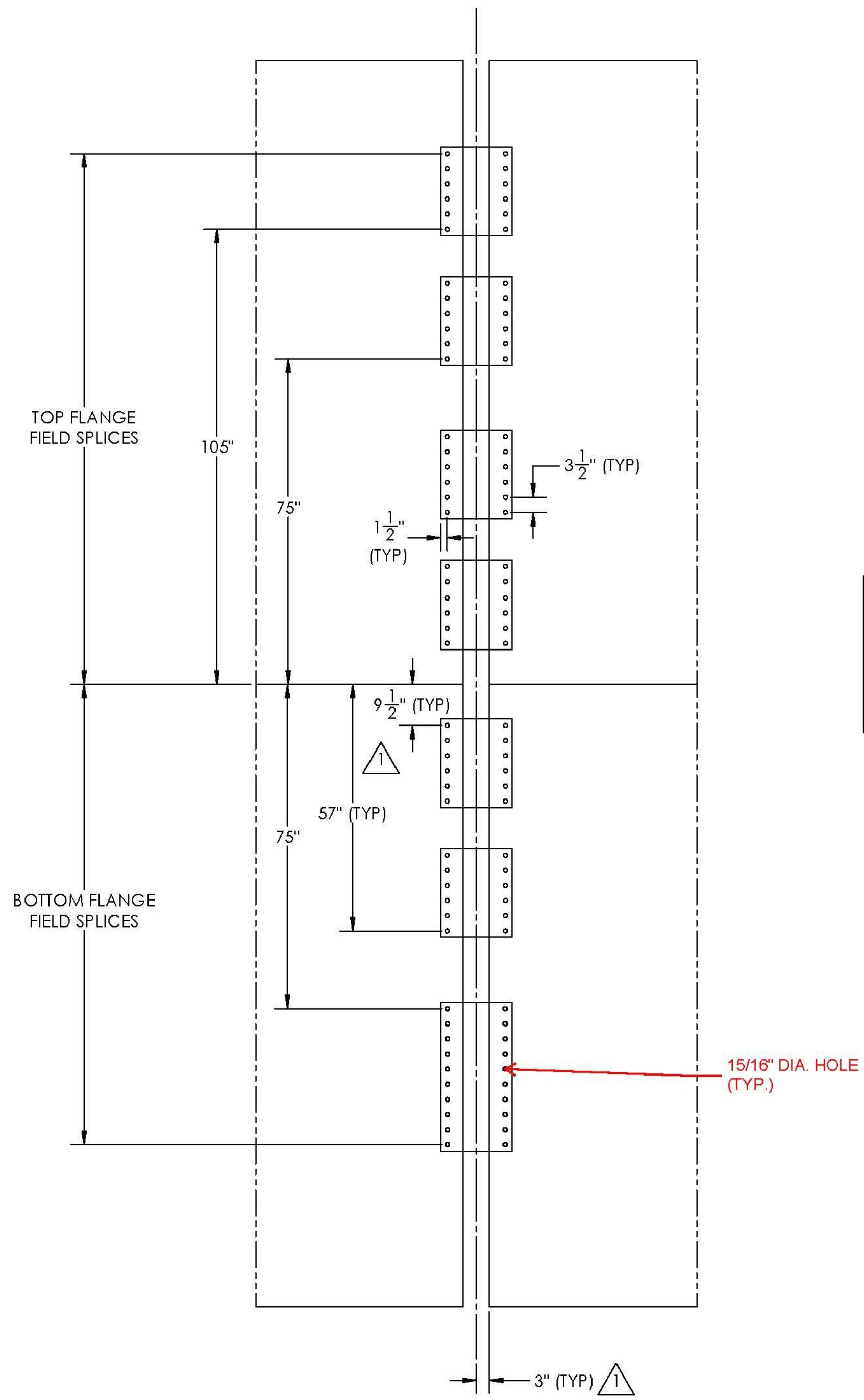
DIMENSIONS ARE IN INCHES
 TOLERANCES: +0, -1/16"
 FRACTIONAL +
 ANGULAR: MACH +
 TWO PLACE DECIMAL +
 THREE PLACE DECIMAL ±

DRAWN BY	DATE
JM	6/4/14
CHKD BY	DATE
XX	X/X/XX

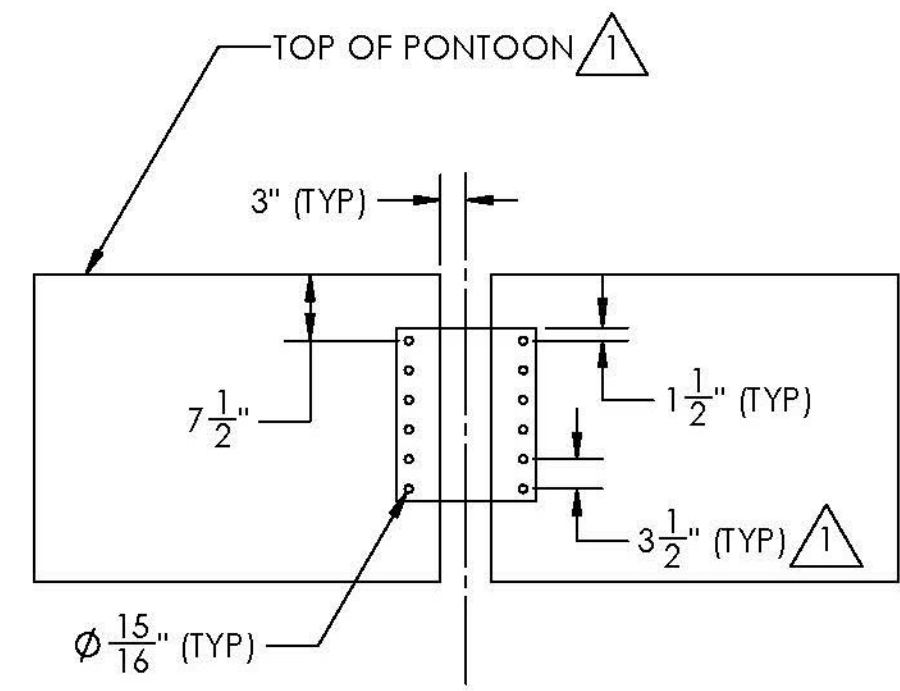
PROJECT	BROOKFIELD FRP PONTOONS
CUSTOMER	MILLER CONST. / VTRANS
SHEET	RAFT ASSEMBLY - BOLT HOLE LOCATIONS

WEIGHT:	N/A
DESCRIPTION:	ASSEMBLY
SCALE	1 : 36
WO NO.	8420
CONTRACT NO.	9185
DWG NO.	8420-8
SHEET	5 OF 5
PONTOON	N/A
PART NO.	N/A

NOTES:
 LEVEL PONTOONS ON BOAT STANDS AND SNUG
 THREADED ROD THRU EACH RAFT - VERIFY ALIGNMENT
 AND SET REFERENCE MARKS
 VERIFY ALIGNMENT USING ROTARY LASER LEVEL IN
 EACH PLANE BETWEEN ADJACENT RAFTS
 ALIGN THE CNC MACHINED DRILLING TEMPLATE TO
 THE BOLT HOLE LOCATIONS PROVIDED IN THIS
 DRAWING AND DRILL 1/8" PILOT HOLES
 REMOVE TEMPLATE AND DRILL 15/16" THRU HOLES
 USING A MAG DRILL TO ENSURE ACCURACY

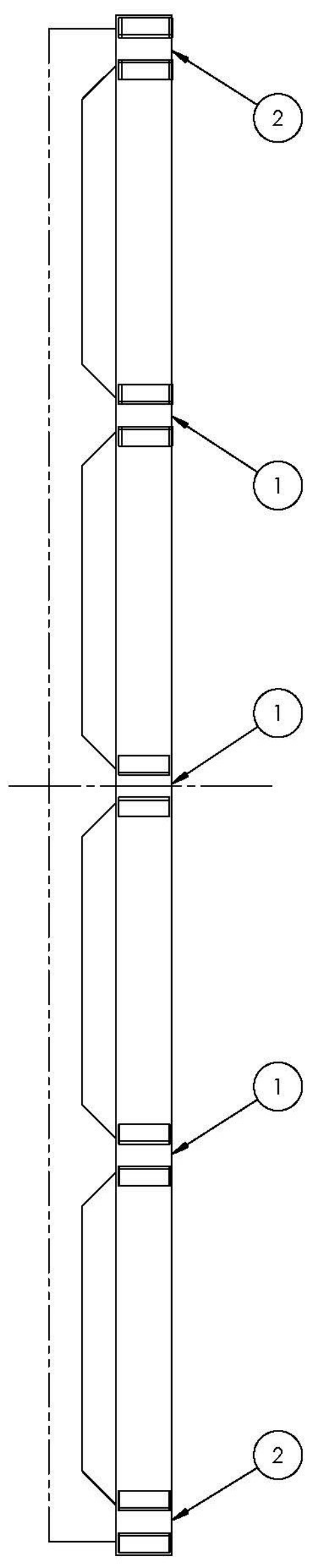


TOP AND BOTTOM FLANGE FIELD SPLICES

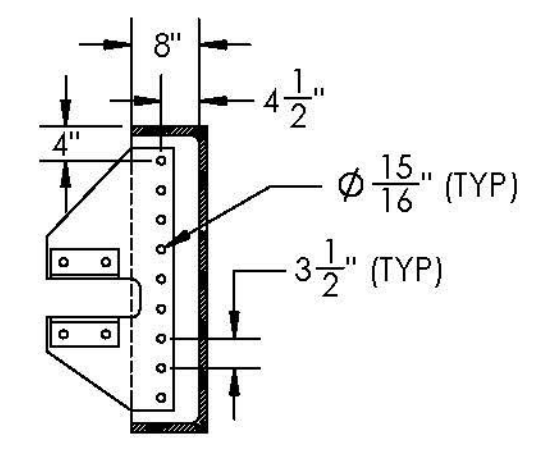


WEB SPLICE DETAILS

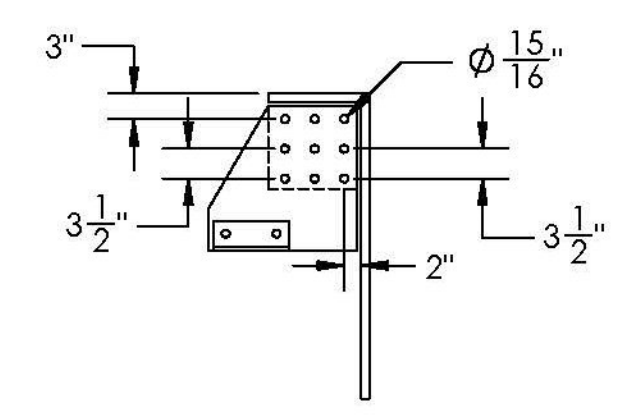
Vermont Agency of Transportation
RECEIVED
 ON: **June 30, 2014**
 and Checked for
CONFORMANCE
 BY: Jennifer Fitch DATE: 07/07/2014



STAINLESS SHELF SUPPORT PLATE LOCATIONS



1 - INTERIOR SUPPORT PLATE BOLTING



2 - EXTERIOR SUPPORT PLATE BOLTING

T.Y. LIN INTERNATIONAL
 THE STAMPED DOCUMENTS ARE HEREBY:
 _____ APPROVED
 _____ X APPROVED AS NOTED
 _____ REVISE AND RESUBMIT
 SEE TRANSMITTAL FOR ADDITIONAL INFORMATION AS APPLICABLE.
 THIS REVIEW IS FOR GENERAL CONFORMANCE WITH DESIGN
 CONCEPT ONLY. ANY DEVIATION FROM THE PLANS OR
 SPECIFICATIONS NOT CLEARLY NOTED BY THE CONTRACTOR HAS
 NOT BEEN REVIEWED. REVIEW BY THE ENGINEER SHALL NOT RELIEVE
 THE CONTRACTOR OF THE CONTRACTUAL RESPONSIBILITY FOR ANY
 ERRORS OR DEVIATION FROM THE CONTRACT REQUIREMENTS.
 _____ JOSH OLUND _____ 07/03/2014
 REVIEWER DATE