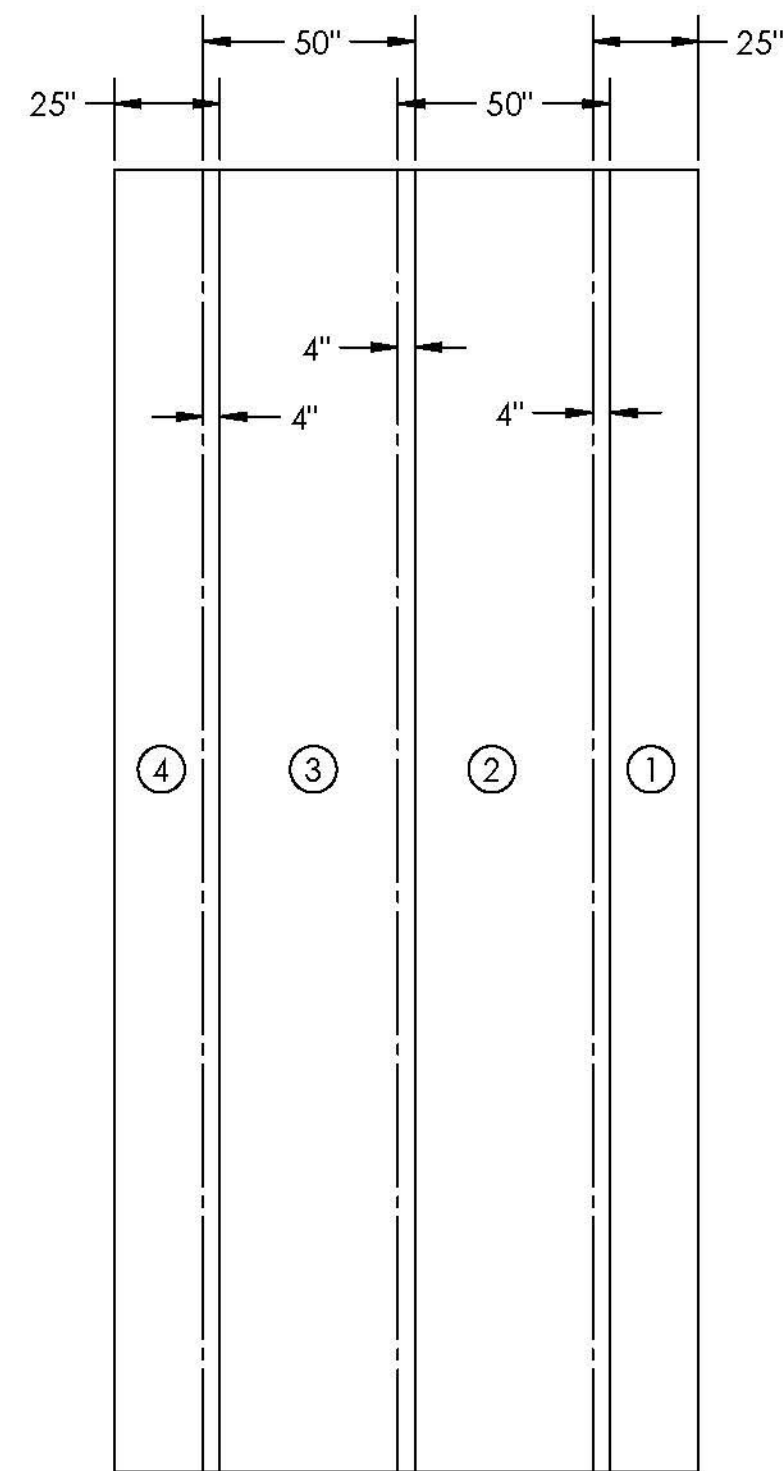
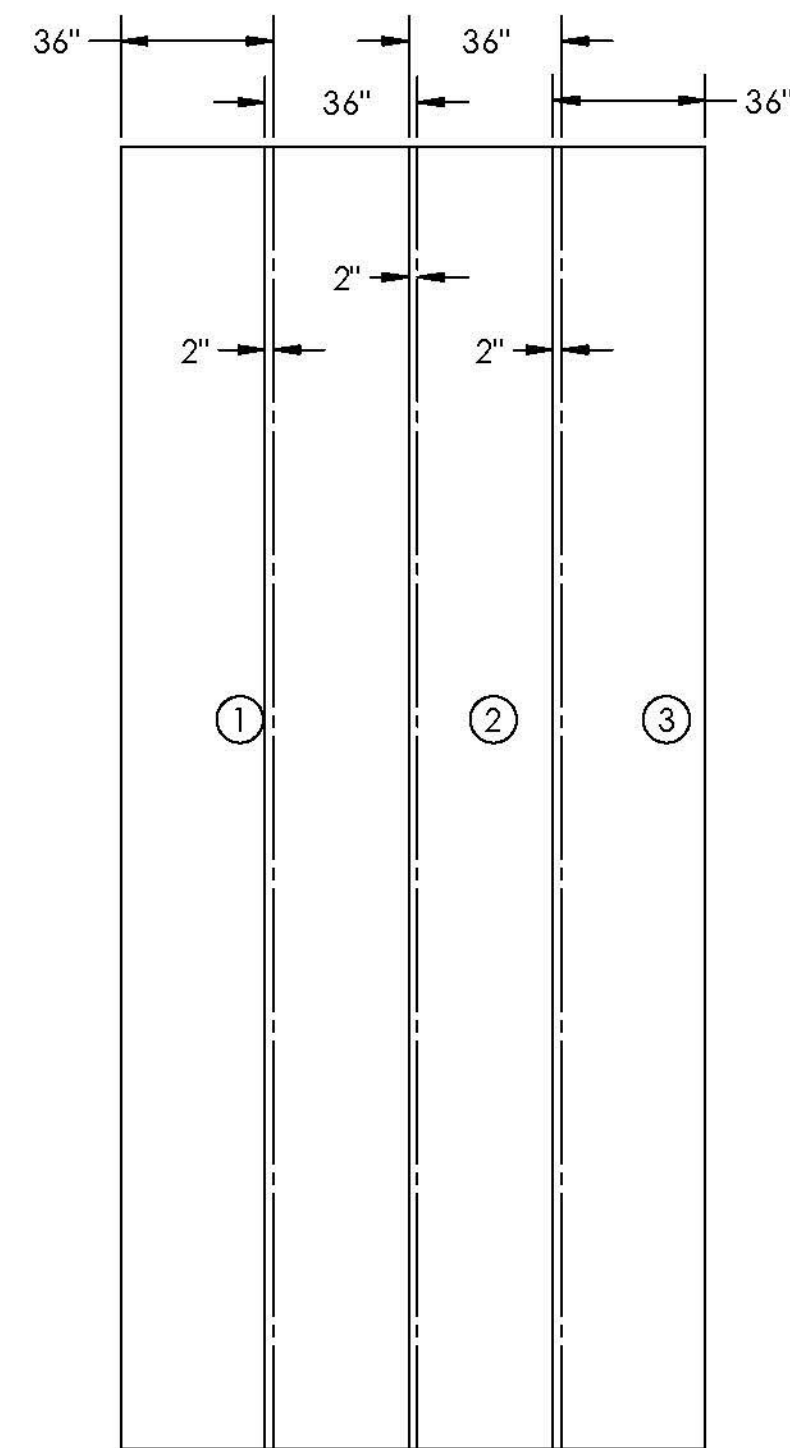


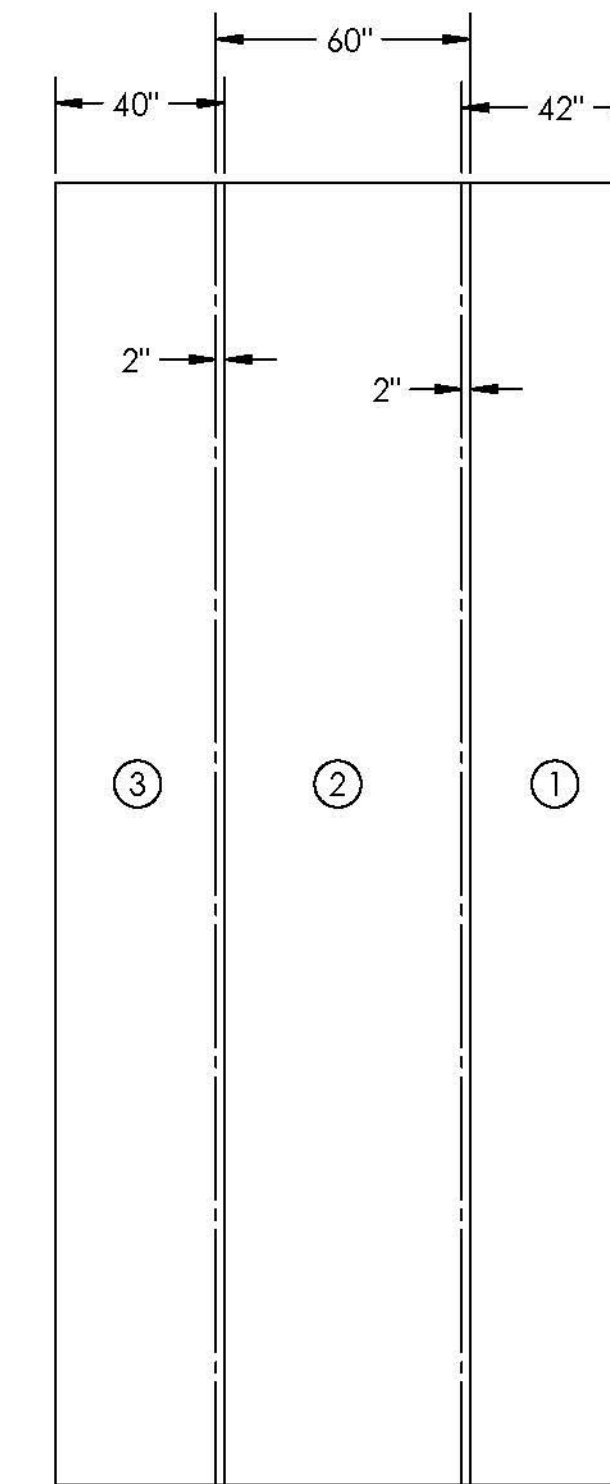
PLY # 1 - C-VEIL



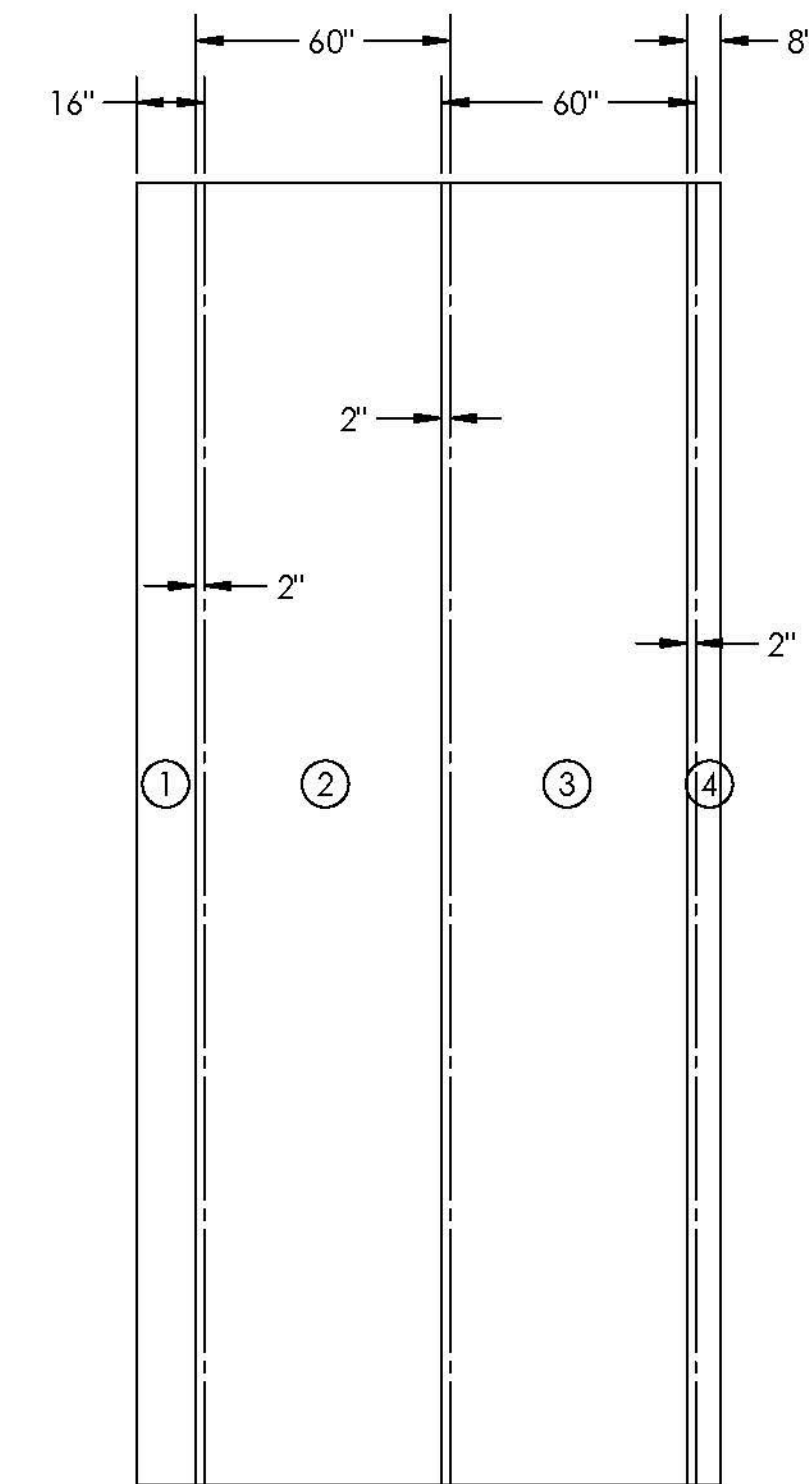
PLY # 2 - 4008



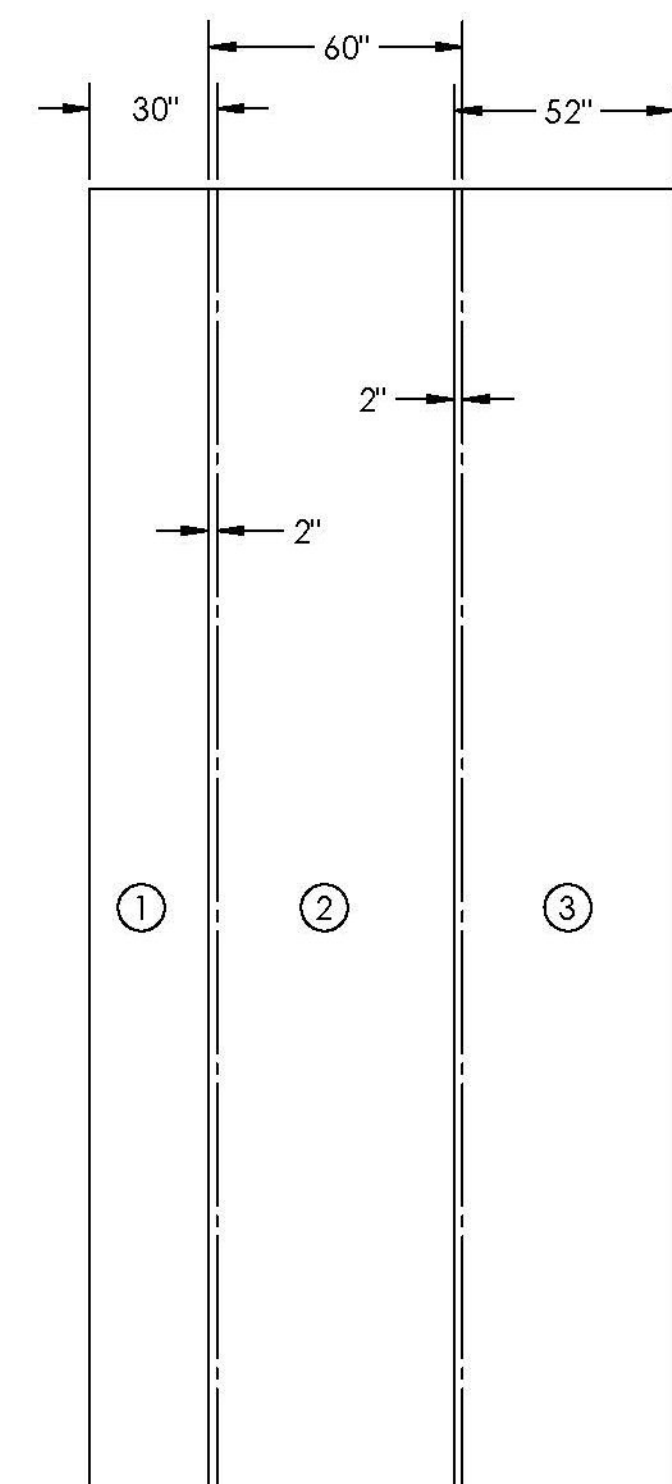
PLY # 3 - 54 oz



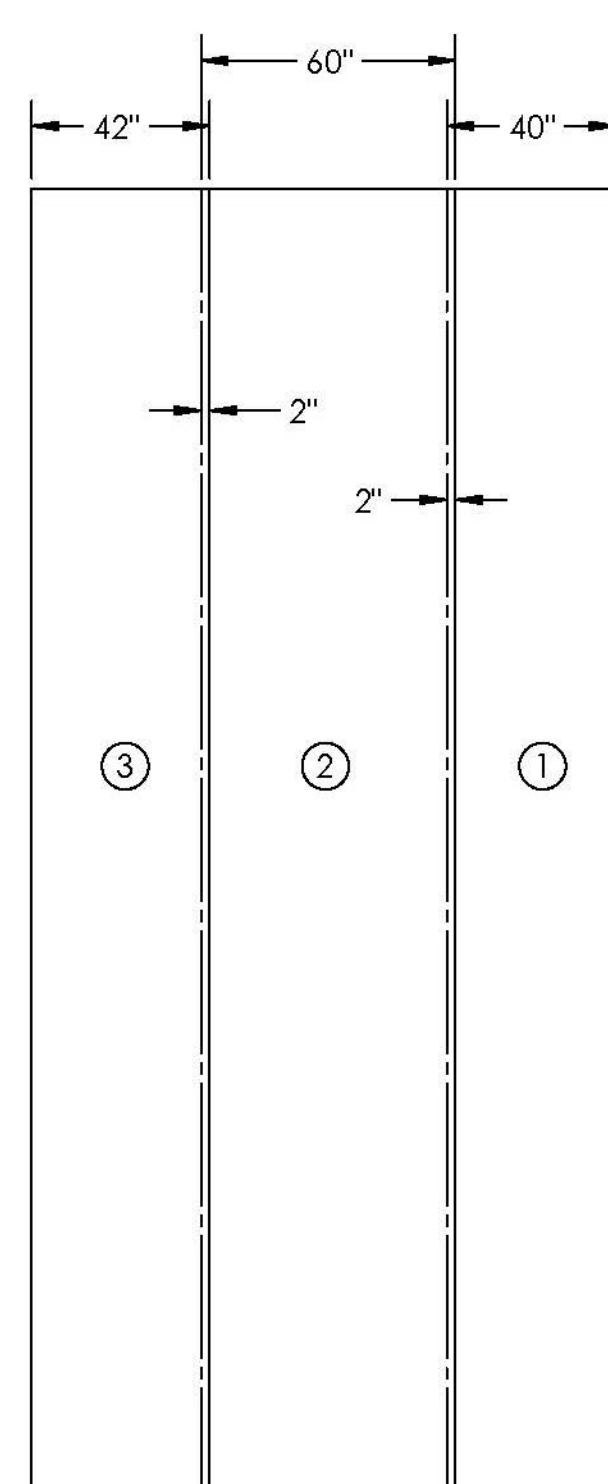
PLY # 4 - 54 oz



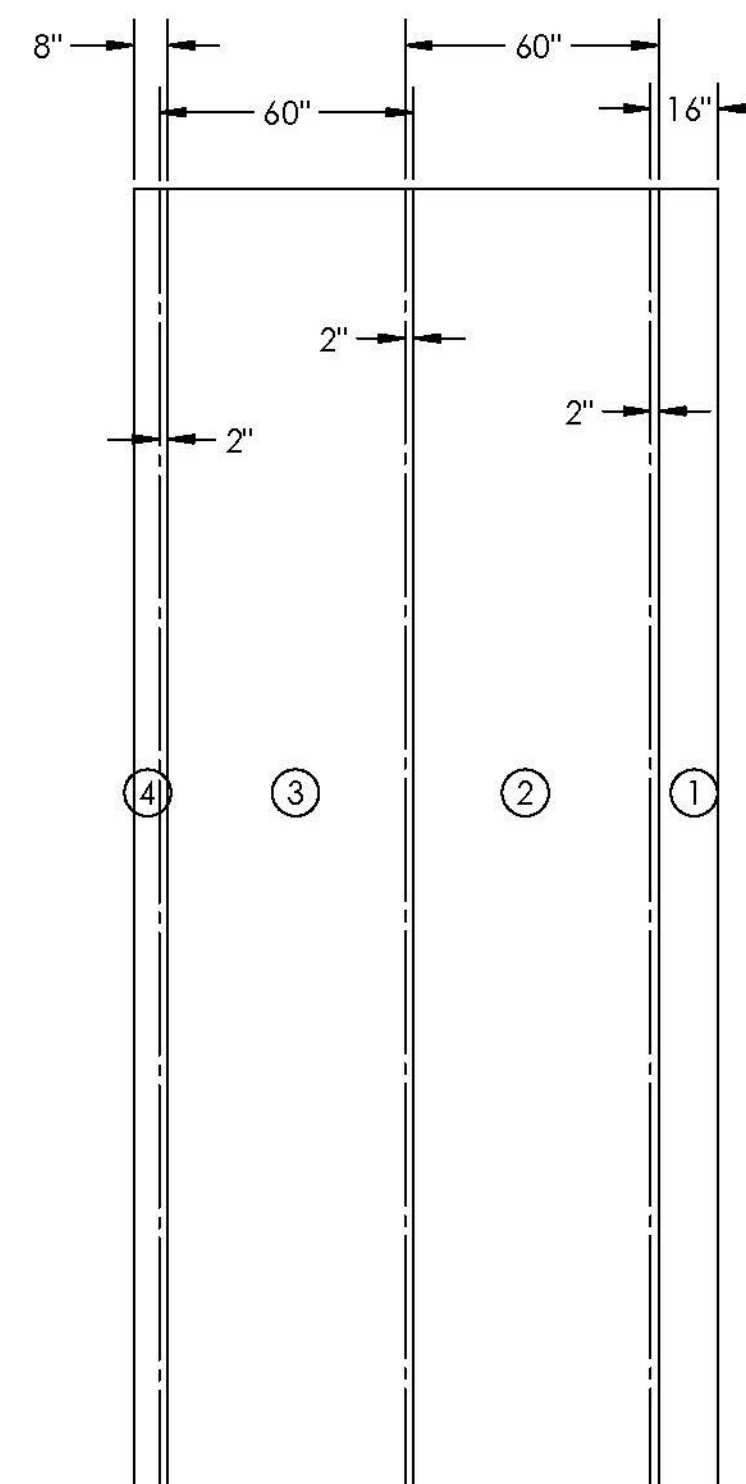
PLY # 5 - 54 oz



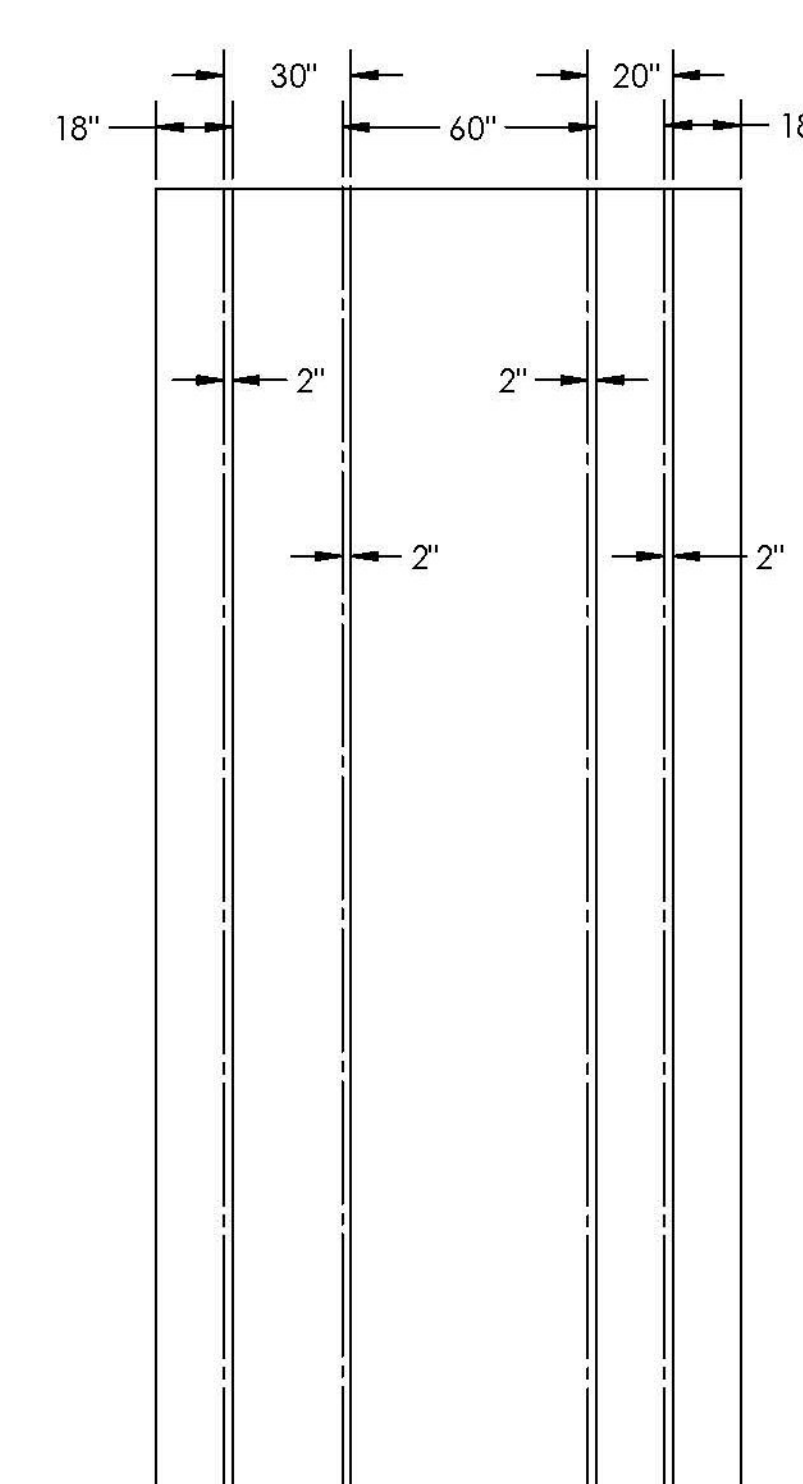
PLY # 6 - 54 oz



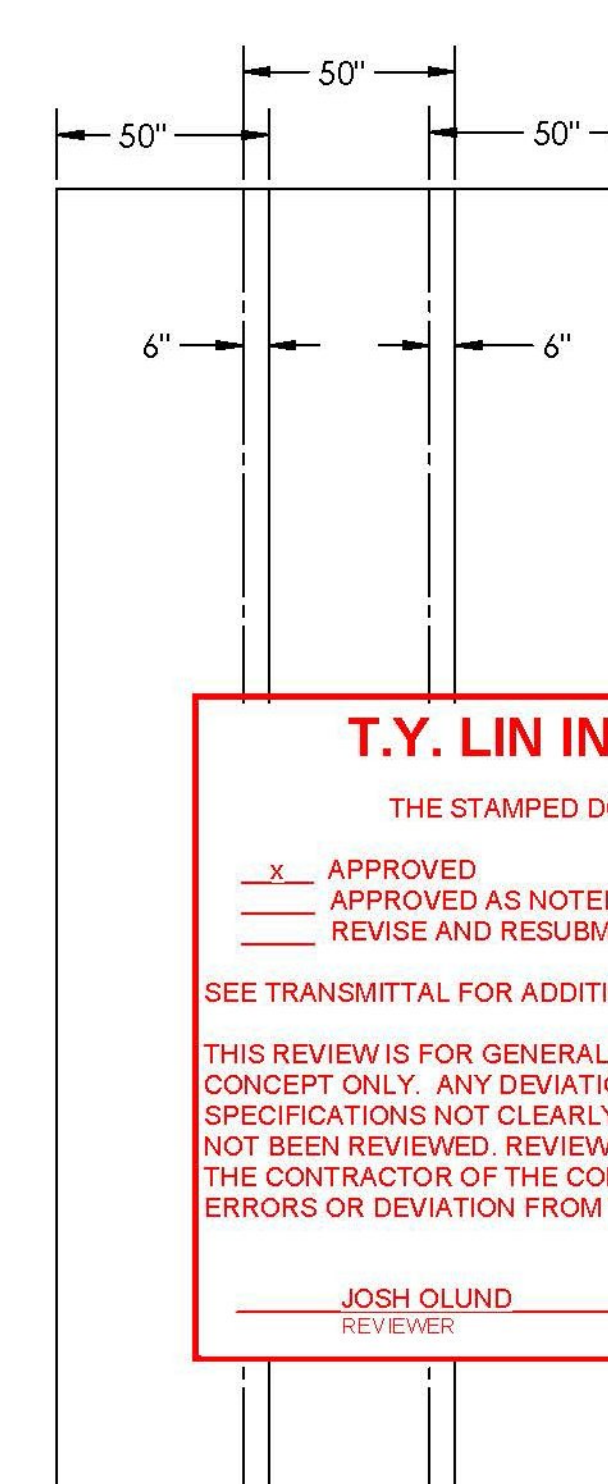
PLY # 7 - 54 oz



PLY # 8 - 54 oz



PLY # 9 - 54 oz



PLY # 10 - 4008

T.Y. LIN INTERNATIONAL
 THE STAMPED DOCUMENTS ARE HEREBY:
 APPROVED
 APPROVED AS NOTED
 REVISE AND RESUBMIT
 SEE TRANSMITTAL FOR ADDITIONAL INFORMATION AS APPLICABLE.
 THIS REVIEW IS FOR GENERAL CONFORMANCE WITH DESIGN CONCEPT ONLY. ANY DEVIATION FROM THE PLANS OR SPECIFICATIONS NOT CLEARLY NOTED BY THE CONTRACTOR HAS NOT BEEN REVIEWED. REVIEW BY THE ENGINEER SHALL NOT RELIEVE THE CONTRACTOR OF THE CONTRACTUAL RESPONSIBILITY FOR ANY ERRORS OR DEVIATION FROM THE CONTRACT REQUIREMENTS.
 JOSH OLUND 07/03/2014
 REVIEWER DATE

Vermont Agency of Transportation
RECEIVED
 ON: June 30, 2014
 and Checked for
CONFORMANCE
 BY: Jennifer Fitch DATE: 07/07/2014

NOTE:
 1. SEE SHEET 13 OR 14 FOR REQUIRED LENGTH
 2. PLYS 4-9 ARE 3" SHORTER TO CREATE LAP SPLICE WHERE TOP PLATES ARE JOINED



REV	DESCRIPTION	DATE
1	CHANGED ALL 54 OZ FABRIC TO 2" MIN. OVERLAP	6/27/14

SEAL

DIMENSIONS ARE IN INCHES
 TOLERANCES: +0, -1/16"
 FRACTIONAL: +
 ANGULAR: MACH +
 BEND ±
 TWO PLACE DECIMAL +
 THREE PLACE DECIMAL ±

DRAWN BY	DATE
ML	6/4/14
CHKD BY	DATE
JM	6/4/14

PROJECT	BROOKFIELD FRP PONTOONS
CUSTOMER	MILLER CONST. / VTRANS
SHEET	HALF TOP PLATE LAYOUT SCHEDULE

WEIGHT:	1,490 lb
DESCRIPTION:	FABRICATION
SCALE	1 : 48
WO NO.	8420
CONTRACT NO.	9185
DWG NO.	8420-6
SHEET	15 OF 16
PONTOON	N/A
PART NO.	N/A