



KENWAY CORP.

| REV | DESCRIPTION                                       | DATE    |
|-----|---|---------|
| 1   | ADDED FABRIC FOLD, FRP TUBE, AND CORNER CUT NOTES | 6/25/14 |
| 1   | ADDED 2" OVER LAP ON NOTED 54 OZ PLYS             | 6/26/14 |

SEAL

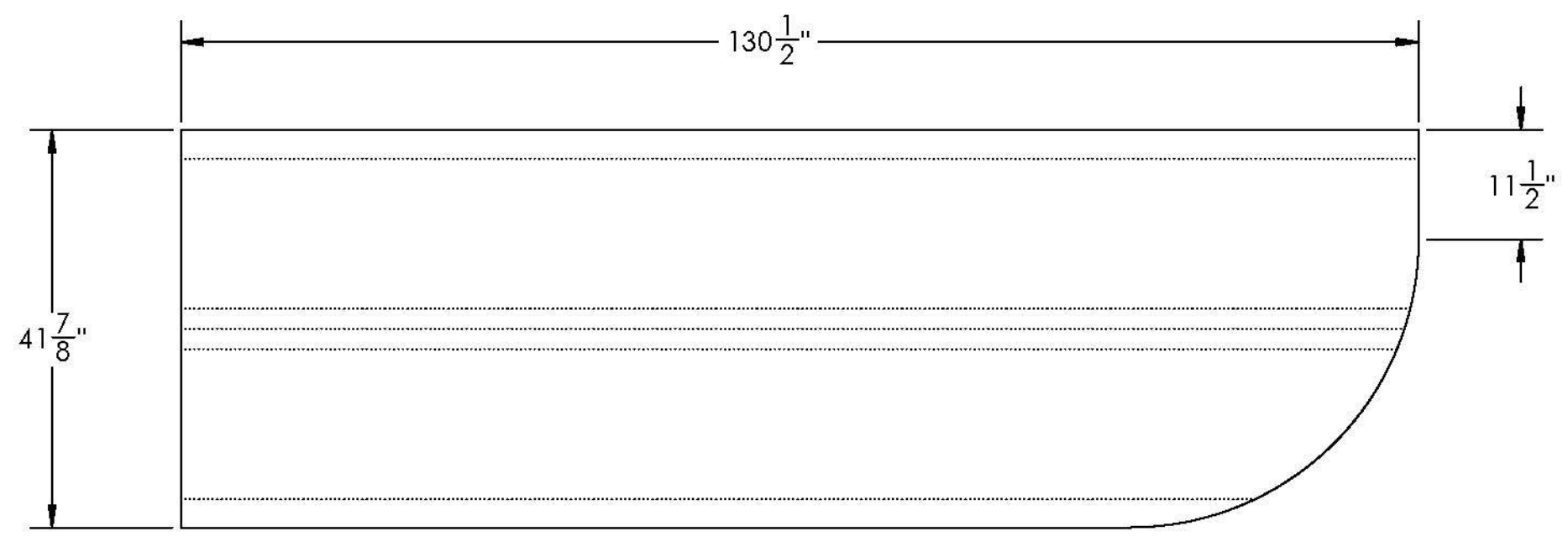
DIMENSIONS ARE IN INCHES  
 TOLERANCES: +0, -1/16"  
 FRACTIONAL +  
 ANGULAR: MACH +  
 TWO PLACE DECIMAL +  
 THREE PLACE DECIMAL ±

| DRAWN BY | DATE   |
|----------|--------|
| ML       | 6/4/14 |
| CHKD BY  | DATE   |
| JM       | 6/4/14 |

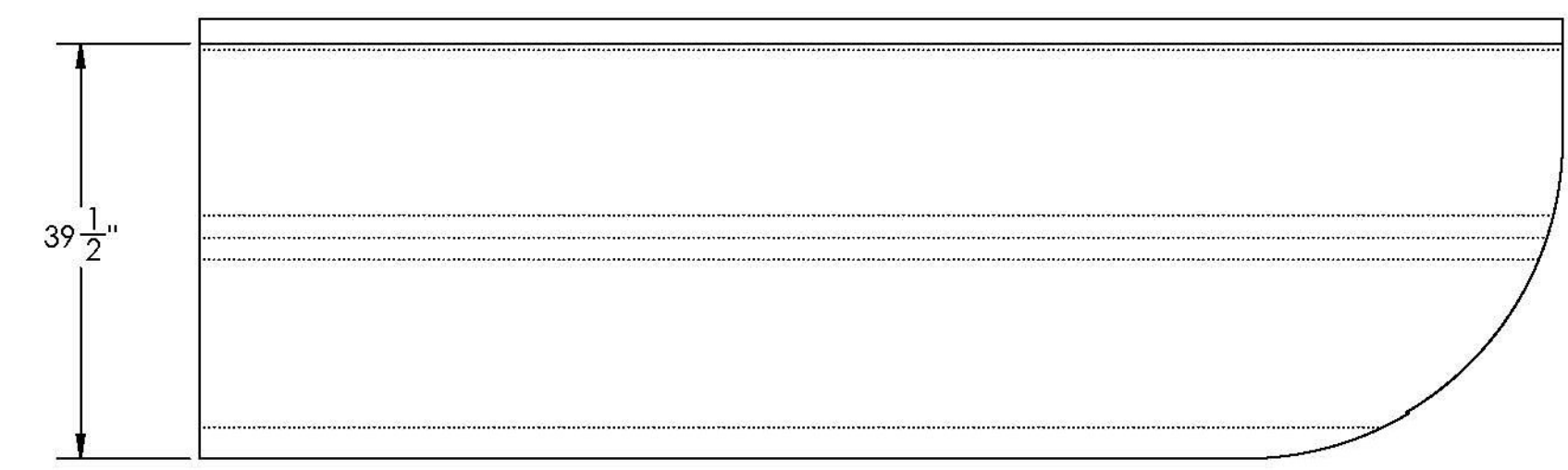
PROJECT: BROOKFIELD FRP PONTOONS  
 SHEET: TRANSVERSE ROD BULKHEAD LAYOUT SCHEDULE

CUSTOMER: MILLER CONST. / VTRANS

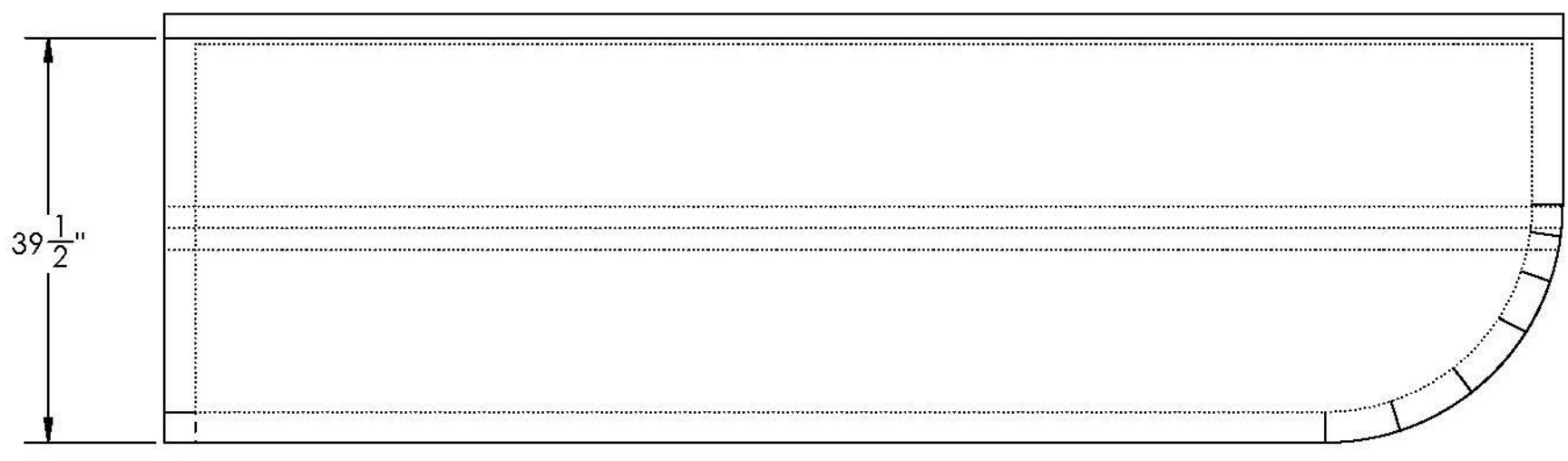
|              |             |
|--------------|-------------|
| WEIGHT:      | 195 LB      |
| DESCRIPTION: | FABRICATION |
| SCALE:       | 1 : 18      |
| WO NO.       | 8420        |
| CONTRACT NO. | 9185        |
| DWG NO.      | 8420-6      |
| SHEET        | 9 OF 16     |
| PONTOON      | PART NO.    |
| 1-10         | 2           |



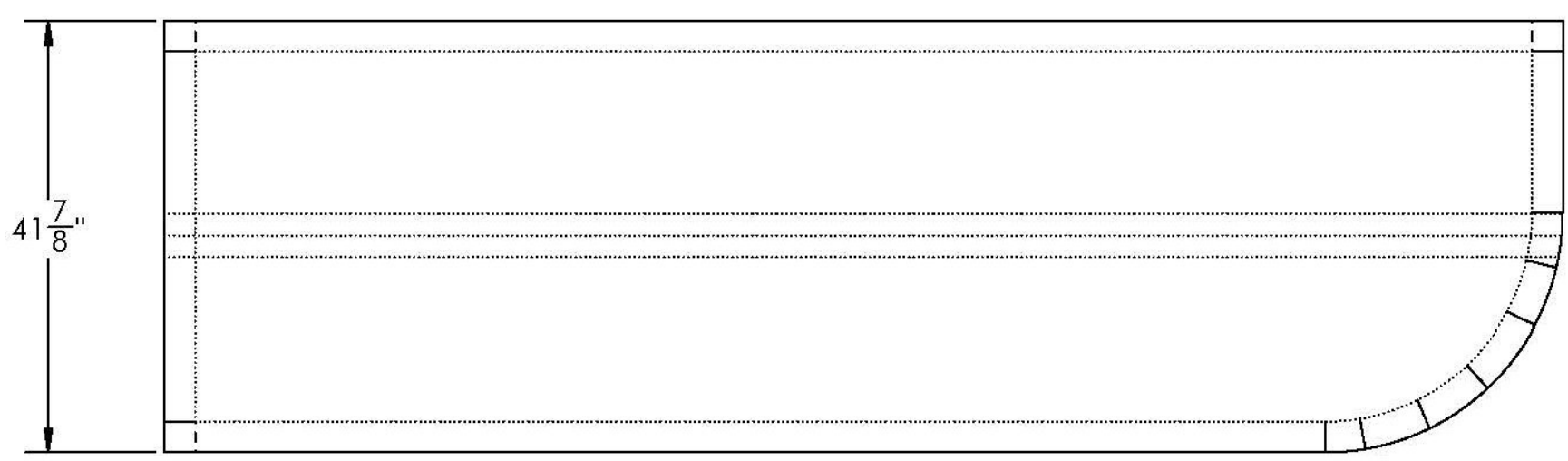
PLY # 1 - C-VEIL



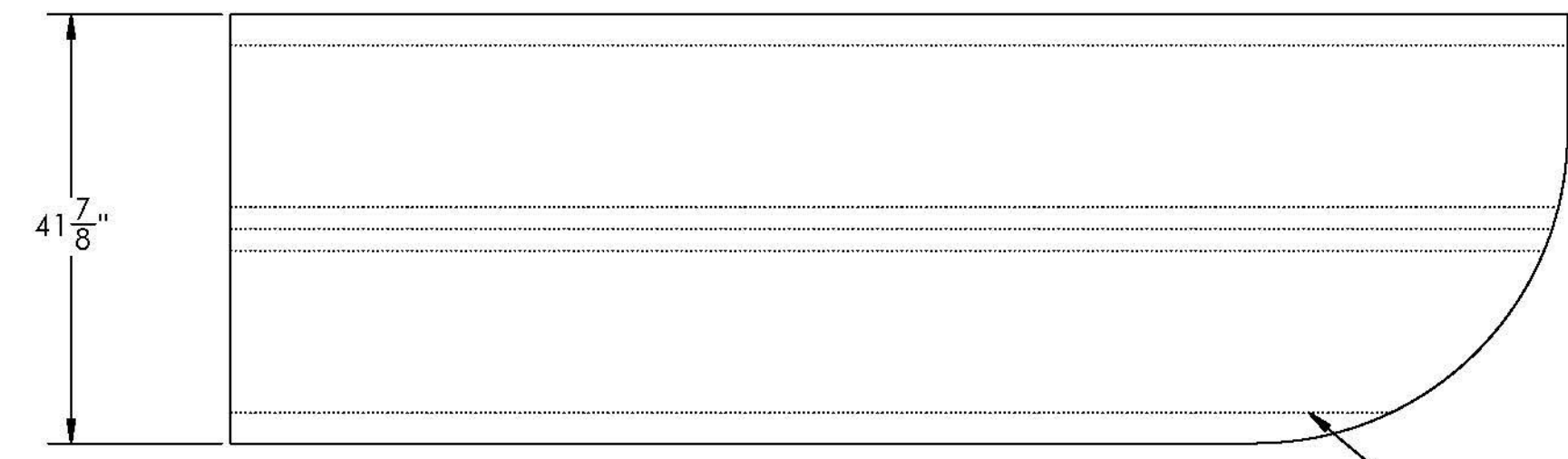
PLY # 4 - 54 oz



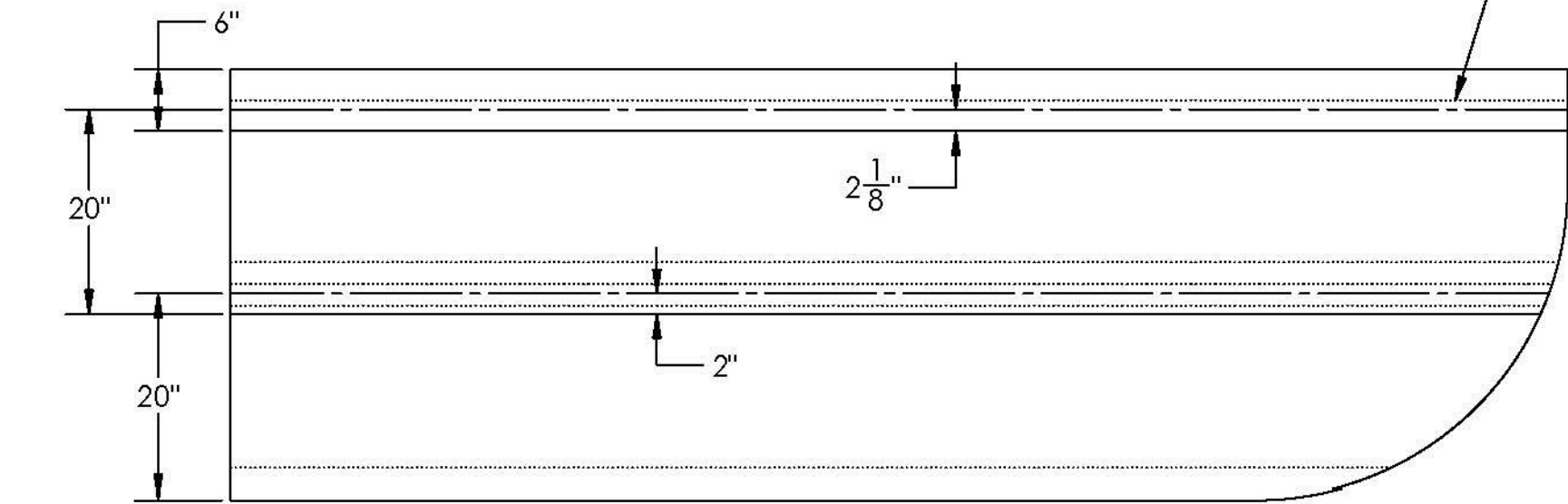
PLY # 7 - 54 oz



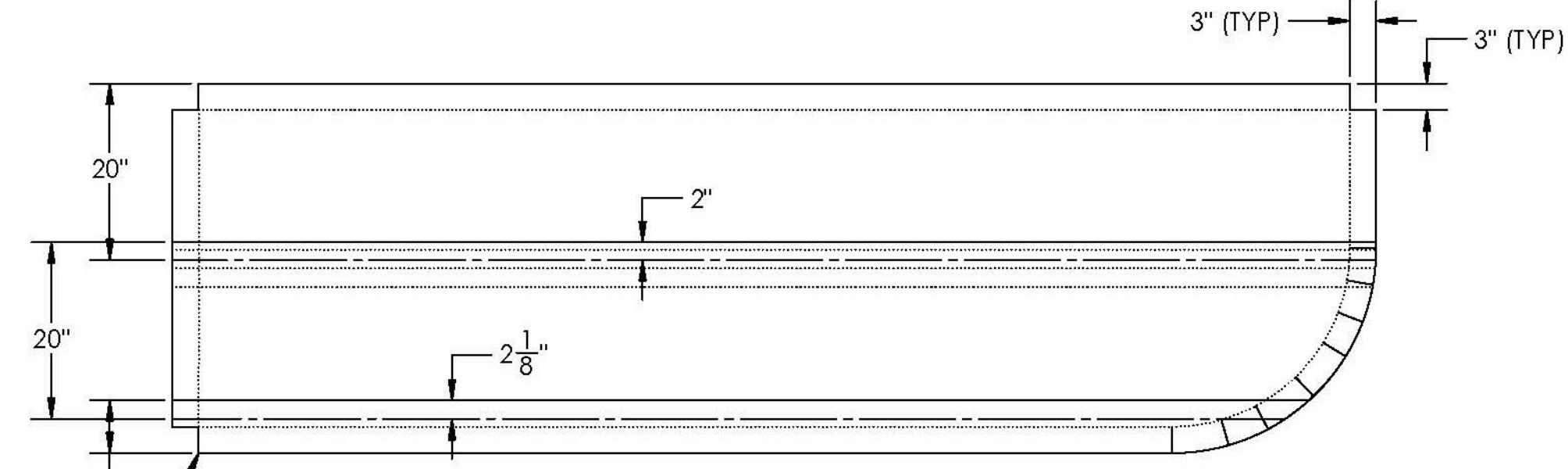
PLY # 10 - 4008



PLY # 2 - 4008



PLY # 5 - 54 oz



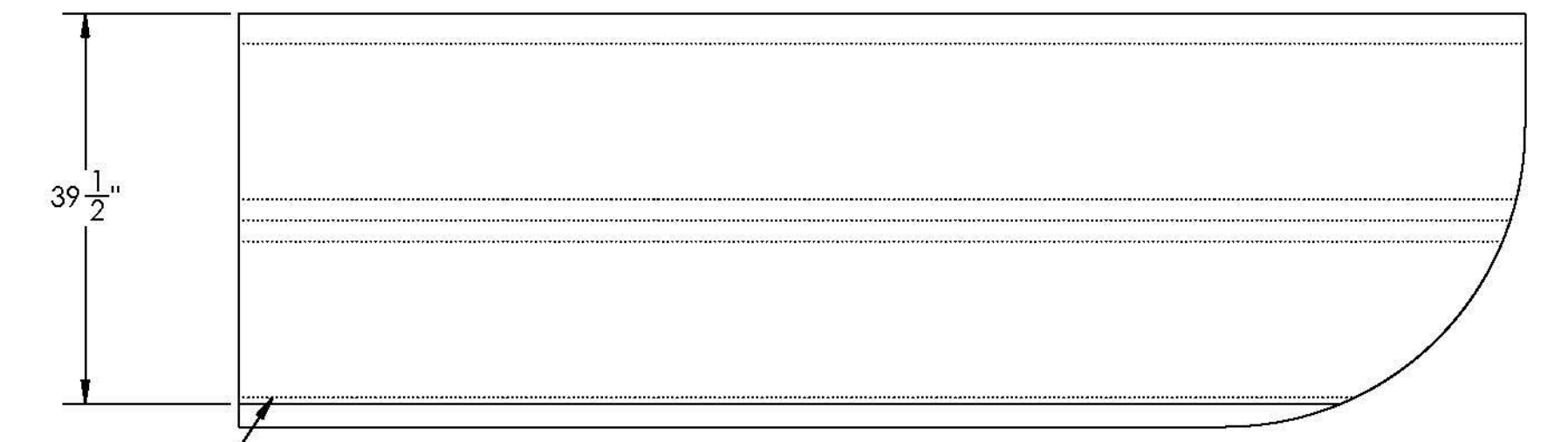
PLY # 8 - 54 oz

CUT OUT CORNERS FROM PLY 8

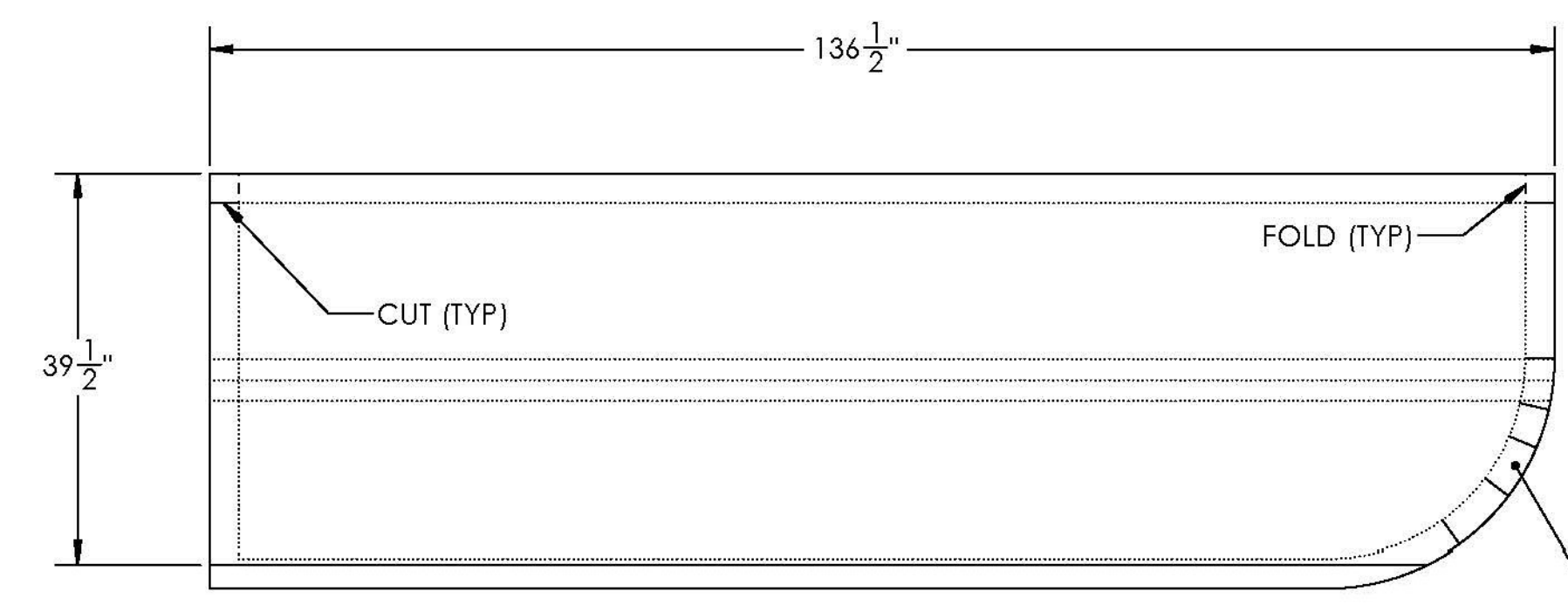
NOTE: PLYS 1-5 BUTT UP TO SHORT SIDE FLANGES

FIRST 5 PLYS FOLD UP ON LONG FLANGES ONLY SO SQUARE TUBE WILL BUTT AGAINST MOLD (TYP)

INSERT 2X2 FRP TUBE BETWEEN PLYS 5 AND 6

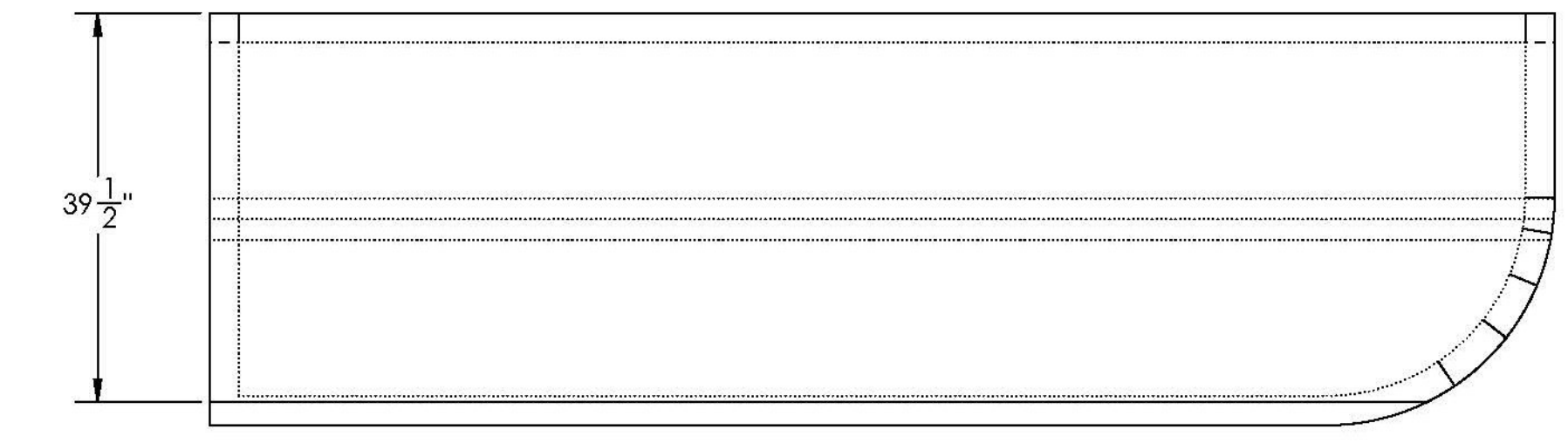


PLY # 3 - 54 oz



PLY # 6 - 54 oz

SLIT AS NEEDED TO FIT CONTOUR



PLY # 9 - 54 oz

Vermont Agency of Transportation  
**RECEIVED**  
 ON: June 30, 2014  
 and Checked for  
**CONFORMANCE**  
 BY: Jennifer Fitch DATE: 07/07/2014

**T.Y. LIN INTERNATIONAL**  
 THE STAMPED DOCUMENTS ARE HEREBY:

APPROVED  
 APPROVED AS NOTED  
 REVISE AND RESUBMIT

SEE TRANSMITTAL FOR ADDITIONAL INFORMATION AS APPLICABLE.

THIS REVIEW IS FOR GENERAL CONFORMANCE WITH DESIGN CONCEPT ONLY. ANY DEVIATION FROM THE PLANS OR SPECIFICATIONS NOT CLEARLY NOTED BY THE CONTRACTOR HAS NOT BEEN REVIEWED. REVIEW BY THE ENGINEER SHALL NOT RELIEVE THE CONTRACTOR OF THE CONTRACTUAL RESPONSIBILITY FOR ANY ERRORS OR DEVIATION FROM THE CONTRACT REQUIREMENTS.

JOSH OLUND REVIEWER 07/03/2014 DATE