



REV	DESCRIPTION	DATE
1	ADDED CORNER CUT OUT NOTE	6/26/14
1	ADDED 2" OVERLAP ON NOTED 54 OZ PLYS	6/26/14

SEAL

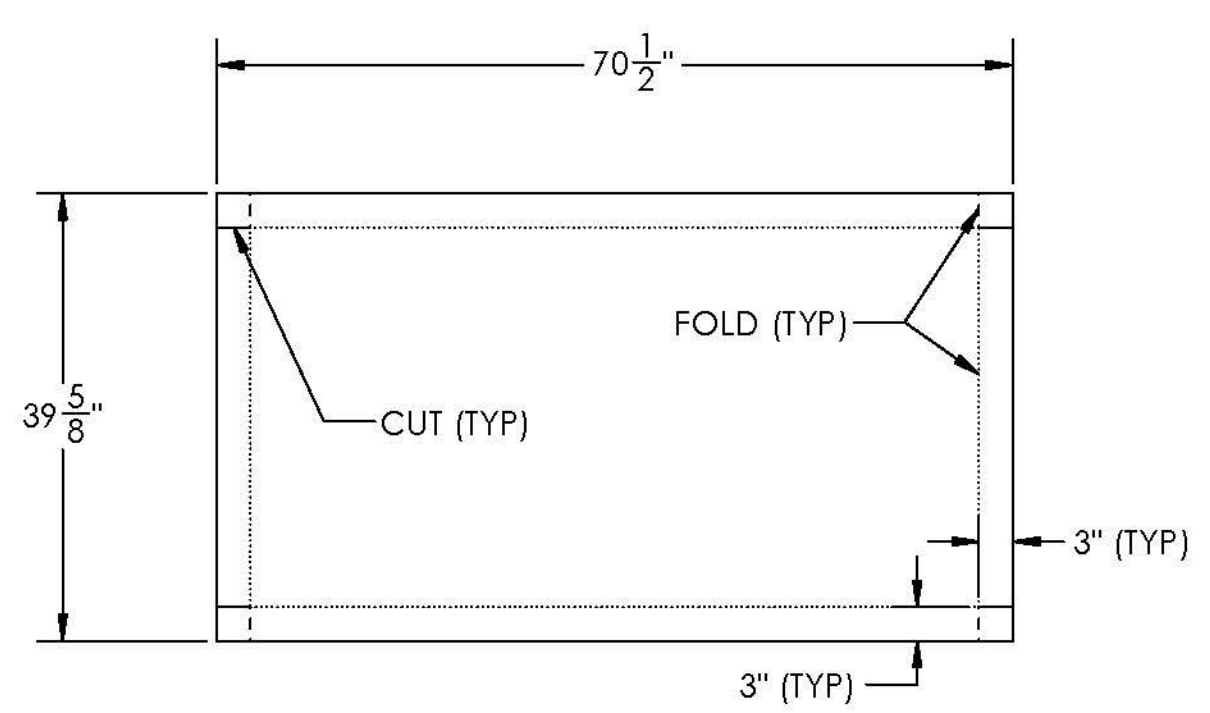
DIMENSIONS ARE IN INCHES
 TOLERANCES: +0, -1/16"
 FRACTIONAL +
 ANGULAR: MACH +
 TWO PLACE DECIMAL +
 BEND ±
 THREE PLACE DECIMAL ±

DRAWN BY	DATE
ML	6/4/14

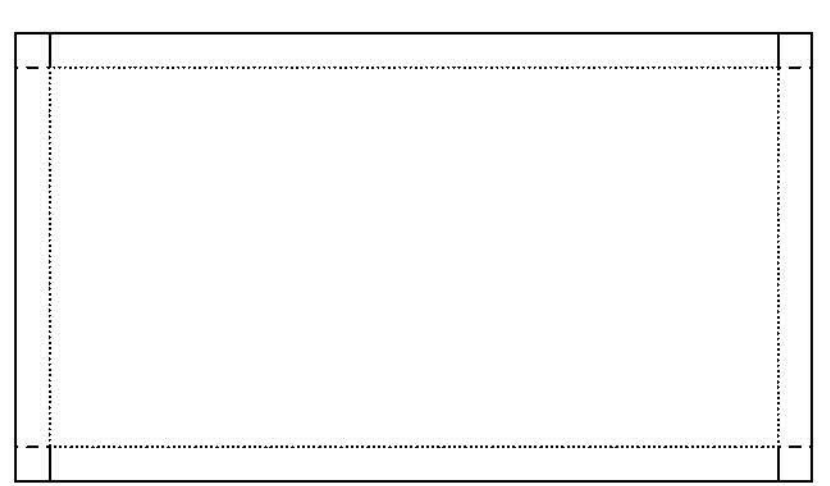
CHKD BY	DATE
JM	6/4/14

PROJECT: BROOKFIELD FRP PONTOONS
 CUSTOMER: MILLER CONST. / TRANS SHEET: END BULKHEADS LAYOUT SCHEDULE

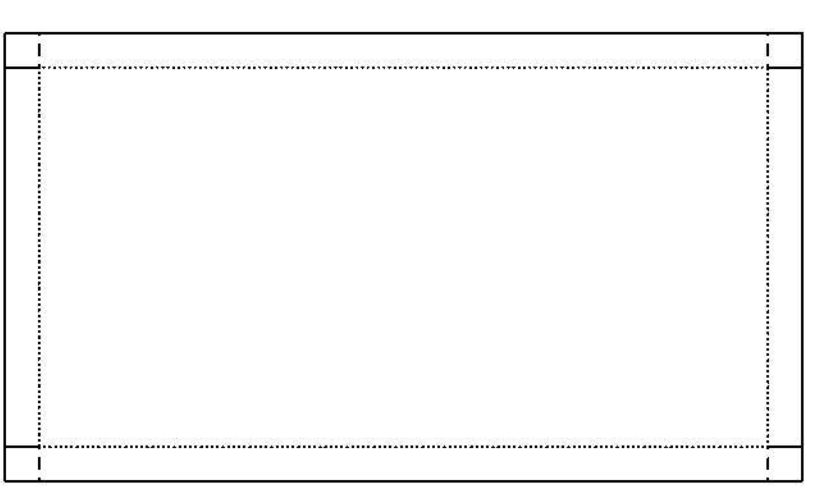
WEIGHT:	N/A
DESCRIPTION:	FABRICATION
SCALE:	1 : 18
WO NO.	8420
CONTRACT NO.	9185
DWG NO.	8420-6
SHEET	8 OF 16
PONTOON	PART NO.
1-10	6-8



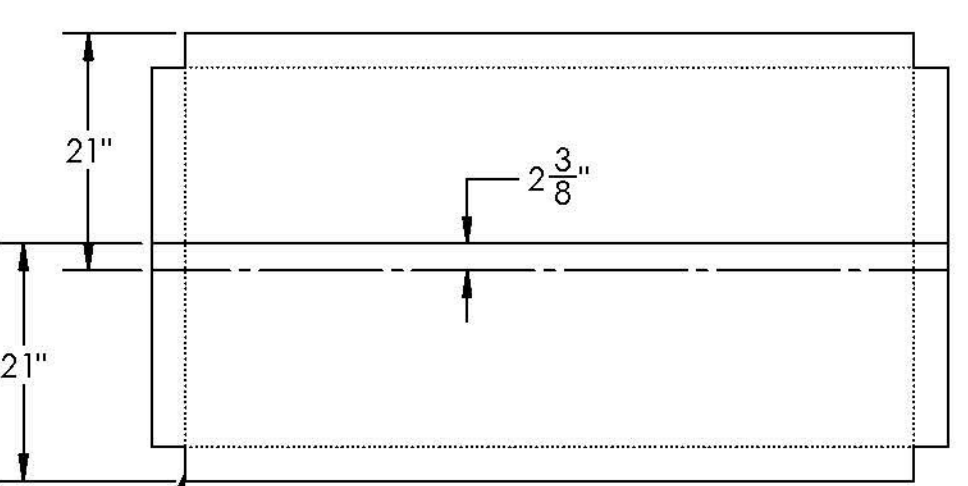
PLY # 1 - C-VEIL



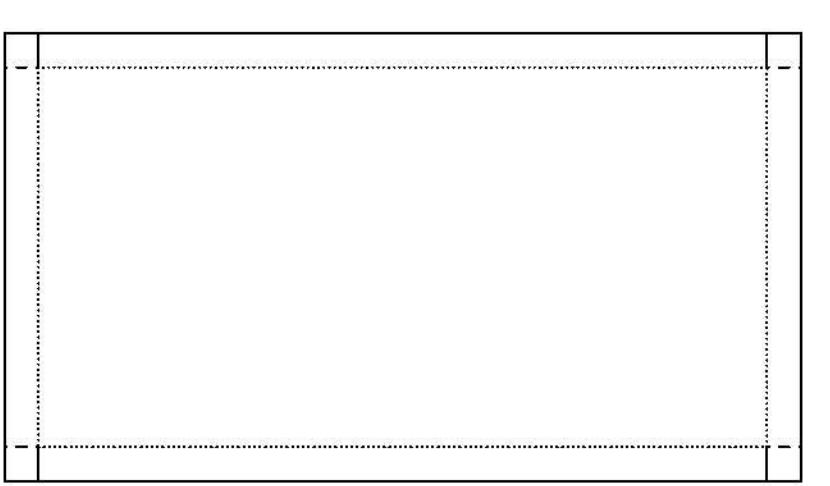
PLY # 2 - 4008



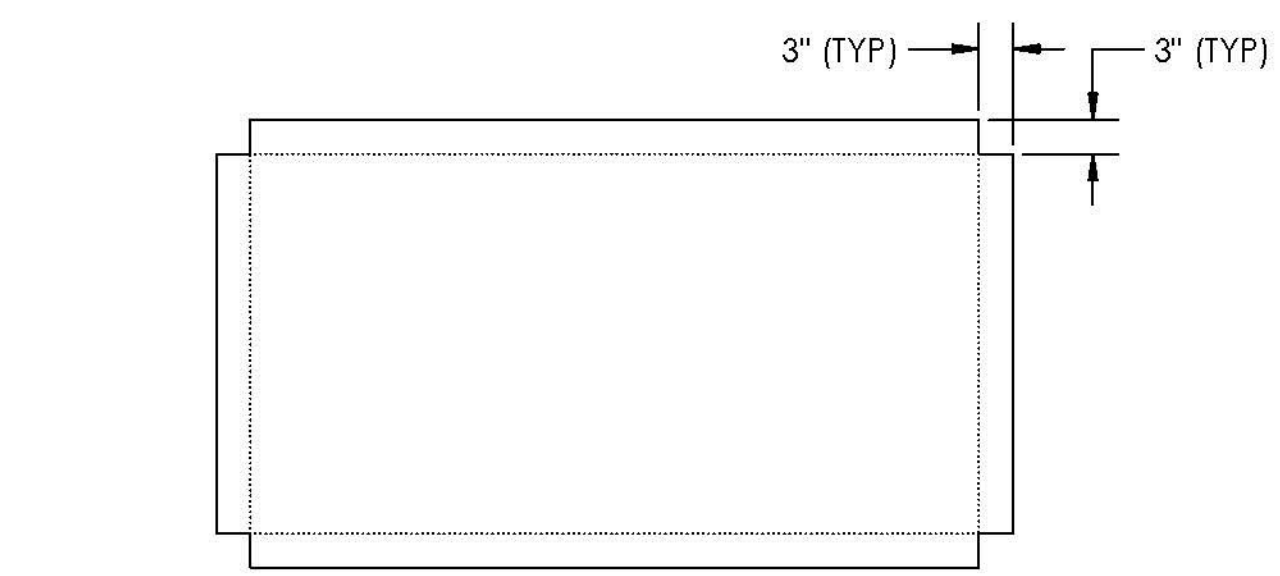
PLY # 3 - 54 oz



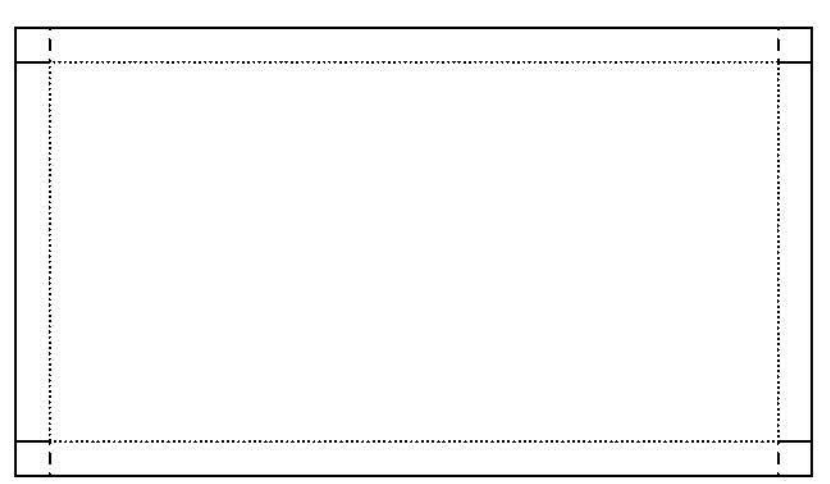
PLY # 4 - 54 oz



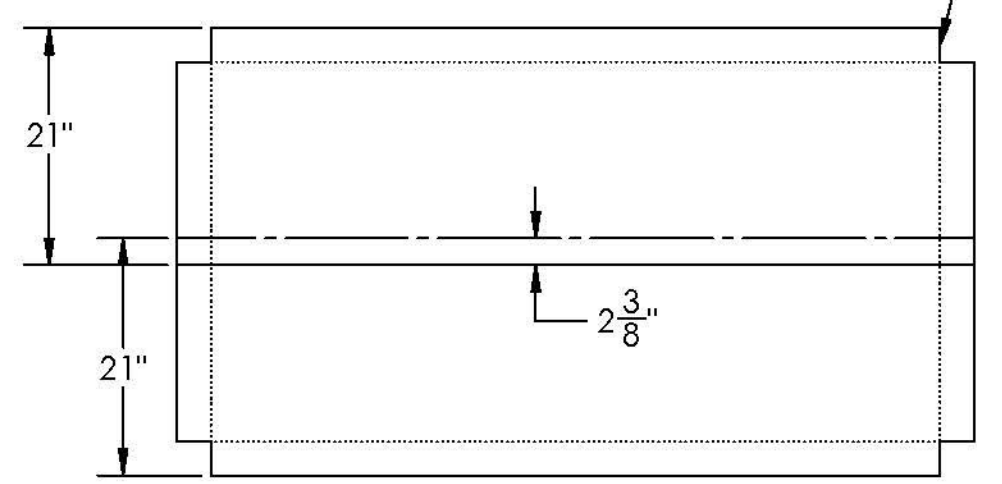
PLY # 5 - 54 oz



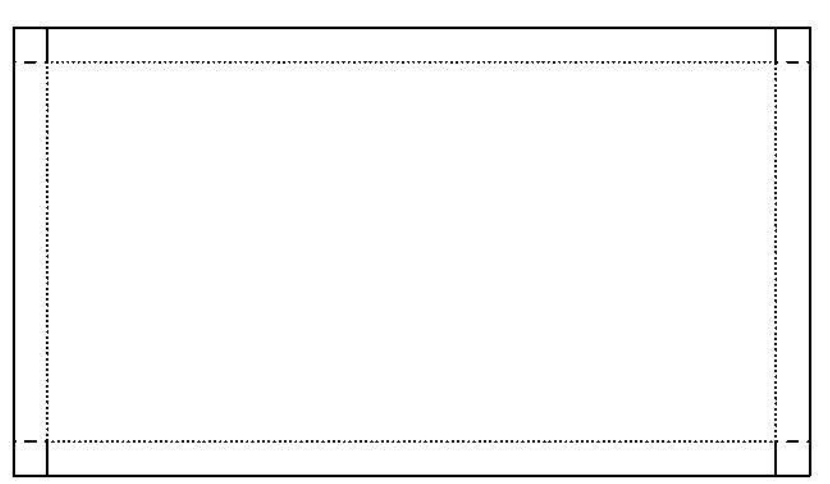
PLY # 6 - 54 oz



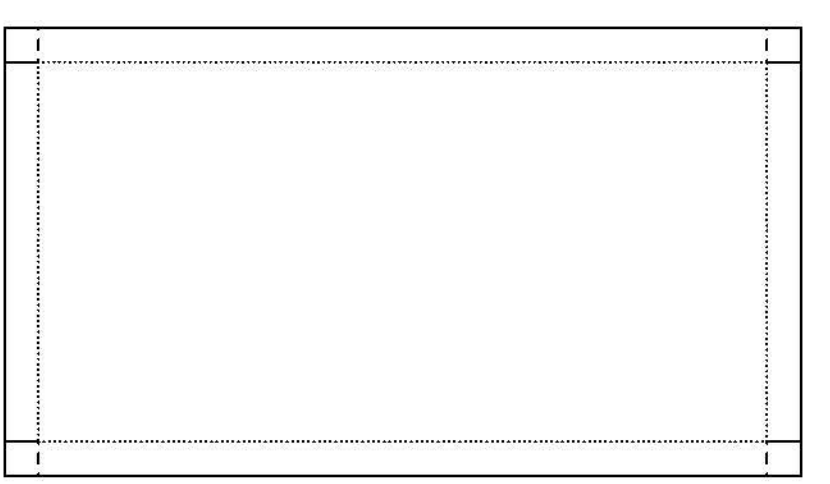
PLY # 7 - 54 oz



PLY # 8 - 54 oz



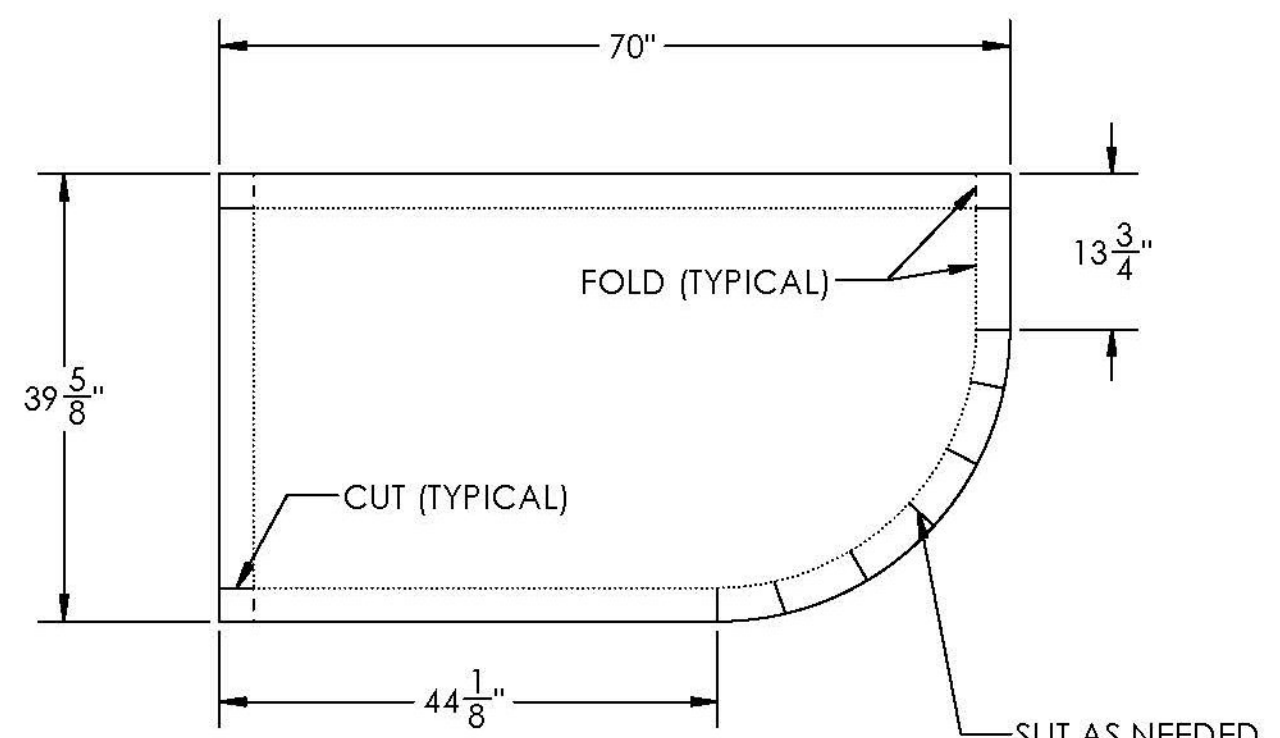
PLY # 9 - 54 oz



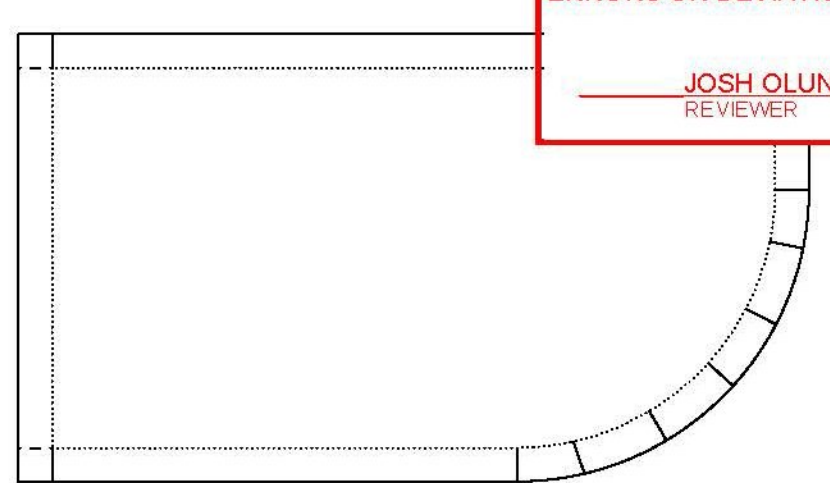
PLY # 10 - 4008

T.Y. LIN INTERNATIONAL
 THE STAMPED DOCUMENTS ARE HEREBY:
 -X- APPROVED
 _____ APPROVED AS NOTED
 _____ REVISE AND RESUBMIT
 SEE TRANSMITTAL FOR ADDITIONAL INFORMATION AS APPLICABLE.
 THIS REVIEW IS FOR GENERAL CONFORMANCE WITH DESIGN CONCEPT ONLY. ANY DEVIATION FROM THE PLANS OR SPECIFICATIONS NOT CLEARLY NOTED BY THE CONTRACTOR HAS NOT BEEN REVIEWED. REVIEW BY THE ENGINEER SHALL NOT RELIEVE THE CONTRACTOR OF THE CONTRACTUAL RESPONSIBILITY FOR ANY ERRORS OR DEVIATION FROM THE CONTRACT REQUIREMENTS.
 JOSH OLUND 07/03/2014
 REVIEWER DATE

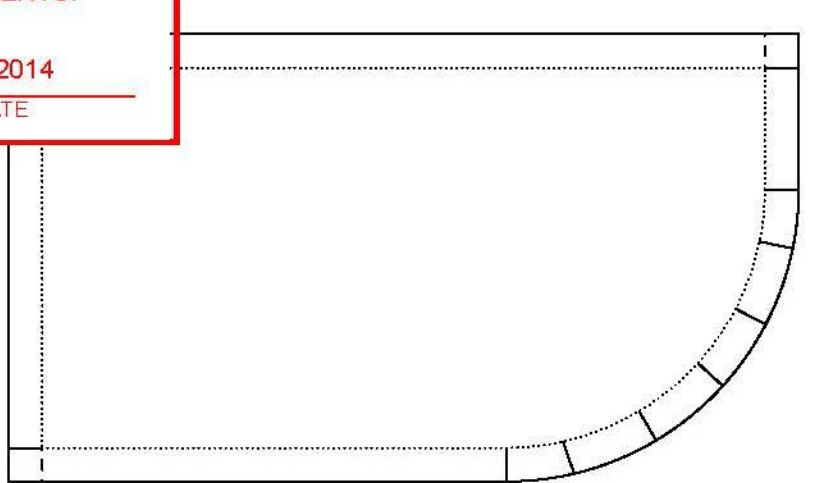
Vermont Agency of Transportation
RECEIVED
 ON: June 30, 2014
 and Checked for
CONFORMANCE
 BY: Jennifer Fitch DATE: 07/07/2014



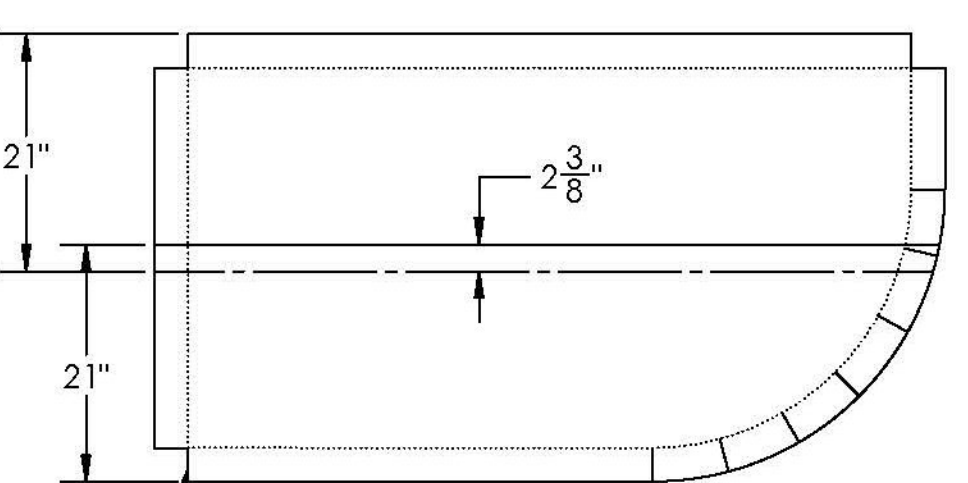
PLY # 1 - C-VEIL



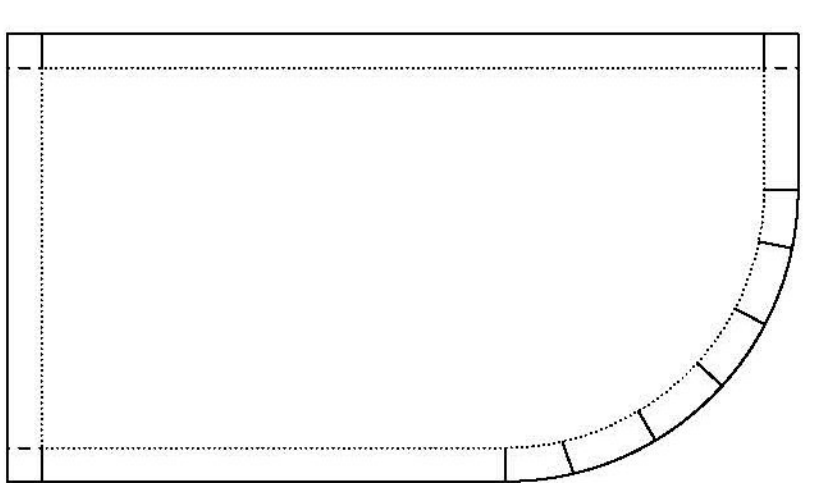
PLY # 2 - 4008



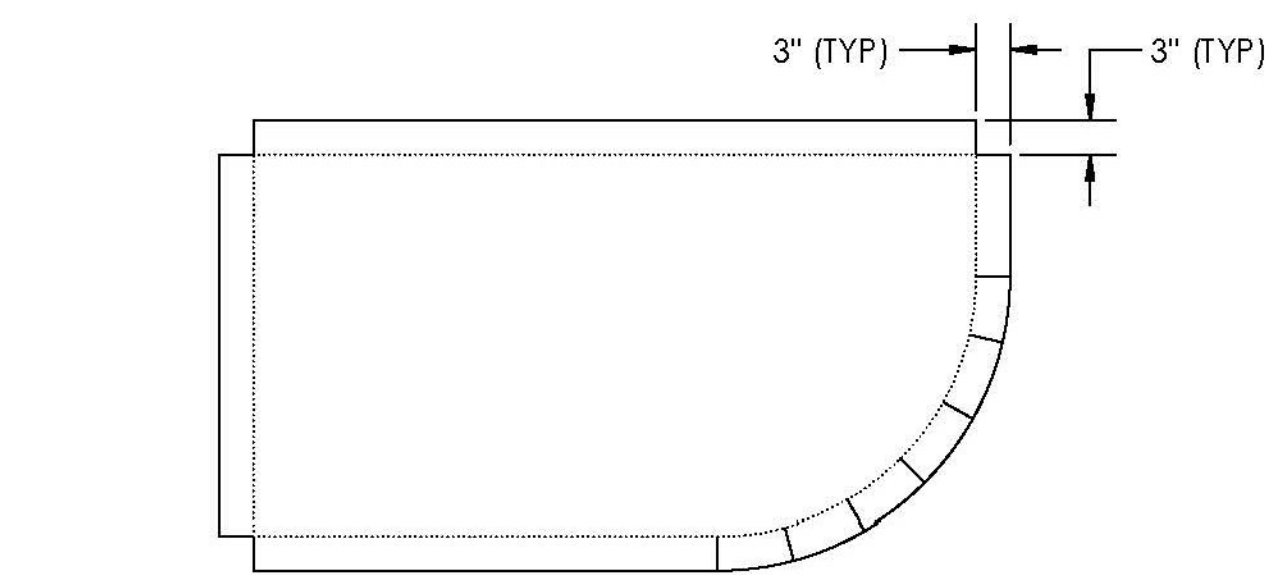
PLY # 3 - 54 oz



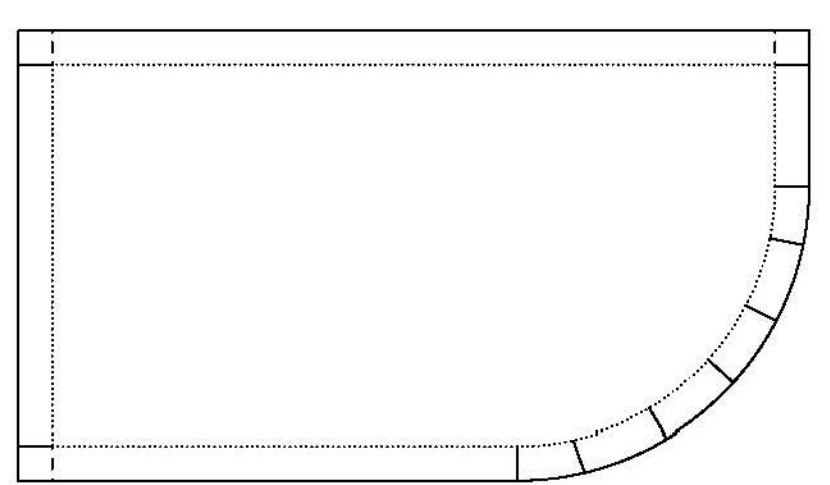
PLY # 4 - 54 oz



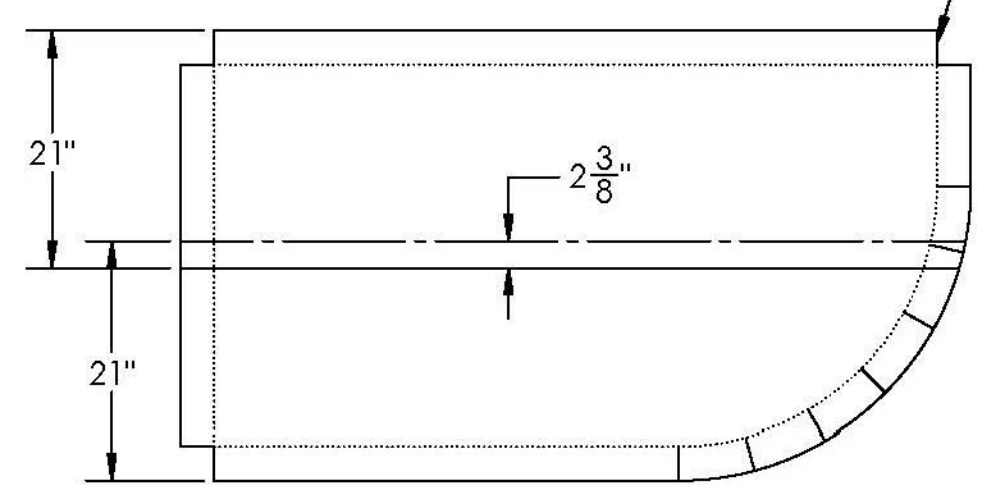
PLY # 5 - 54 oz



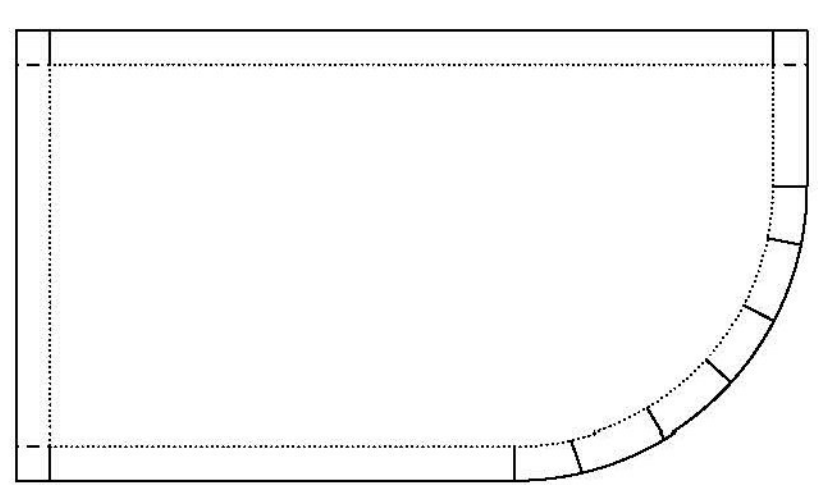
PLY # 6 - 54 oz



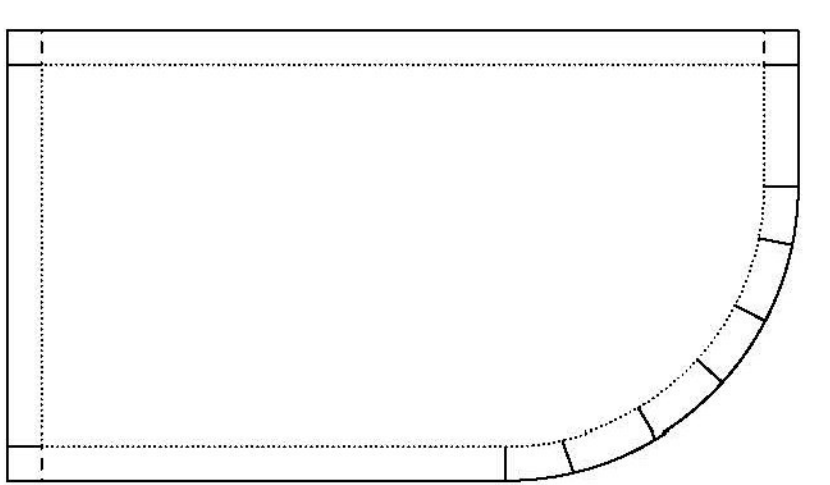
PLY # 7 - 54 oz



PLY # 8 - 54 oz



PLY # 9 - 54 oz



PLY # 10 - 4008