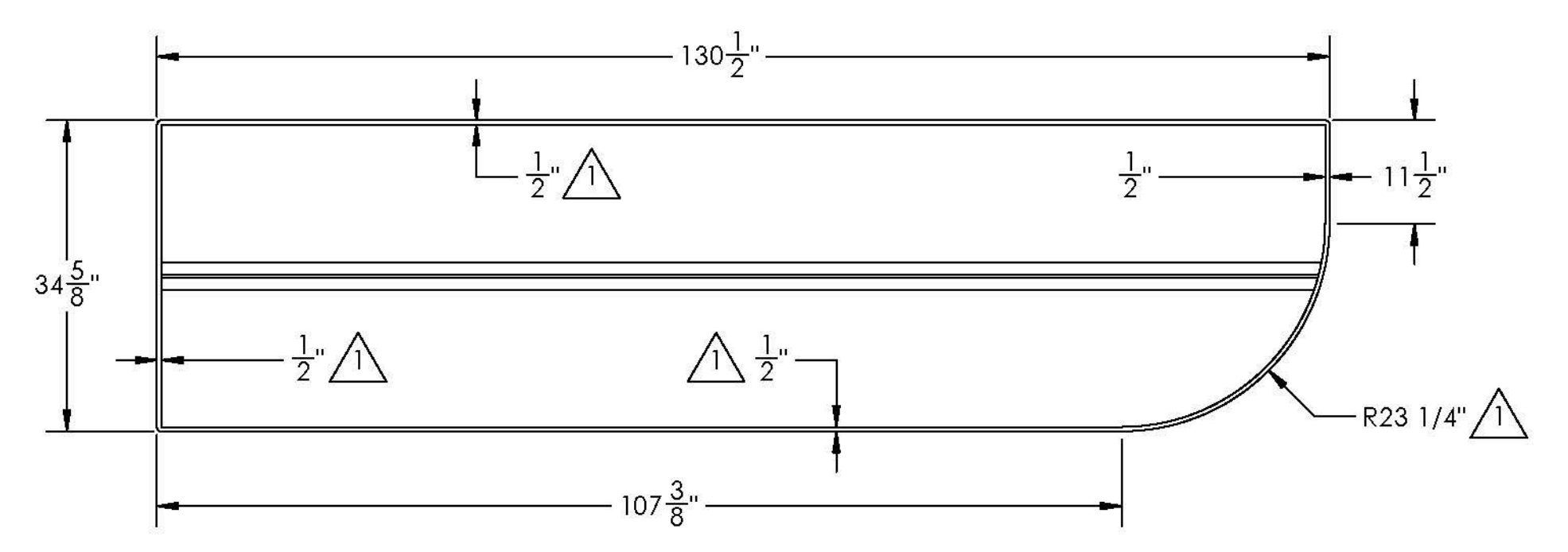
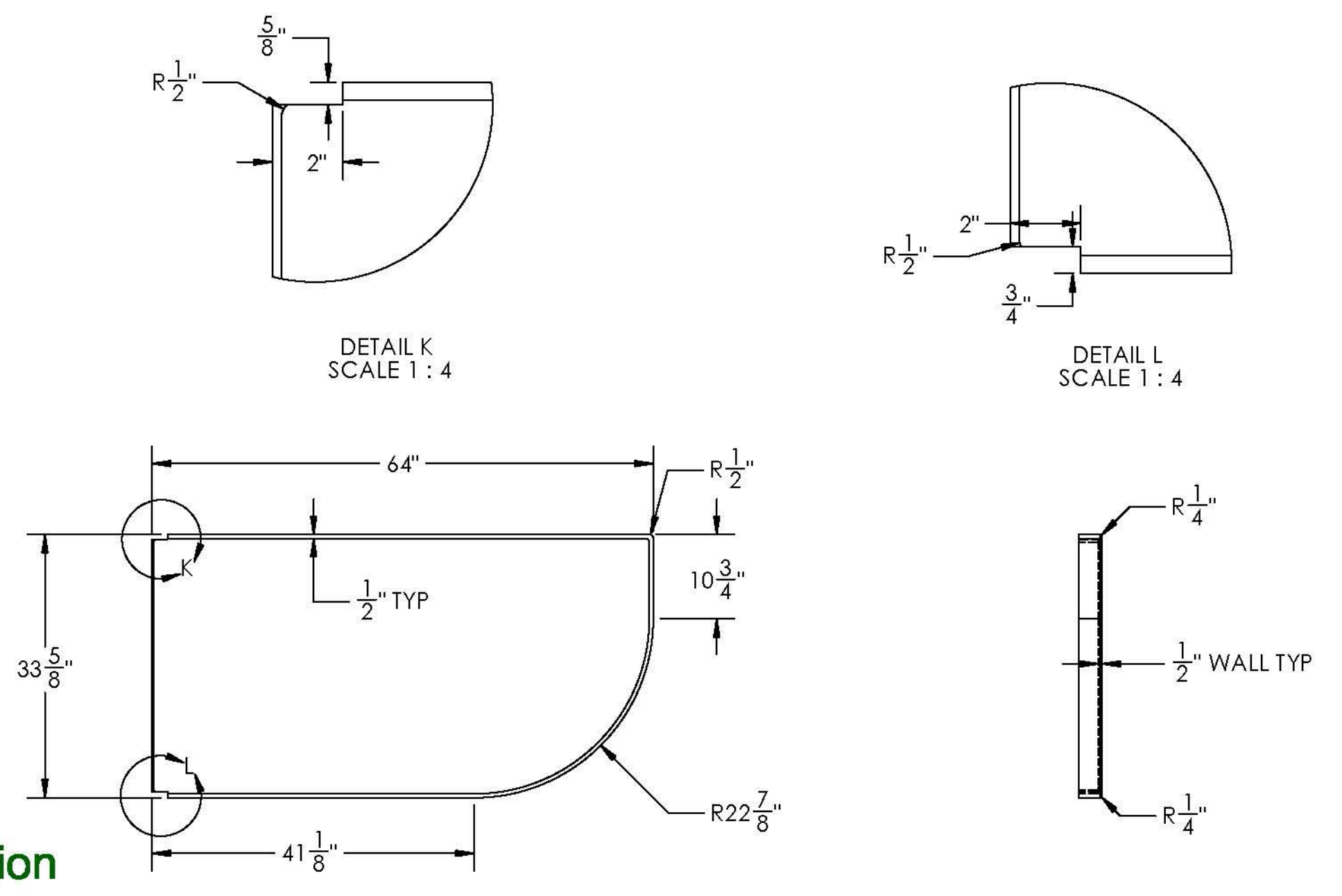
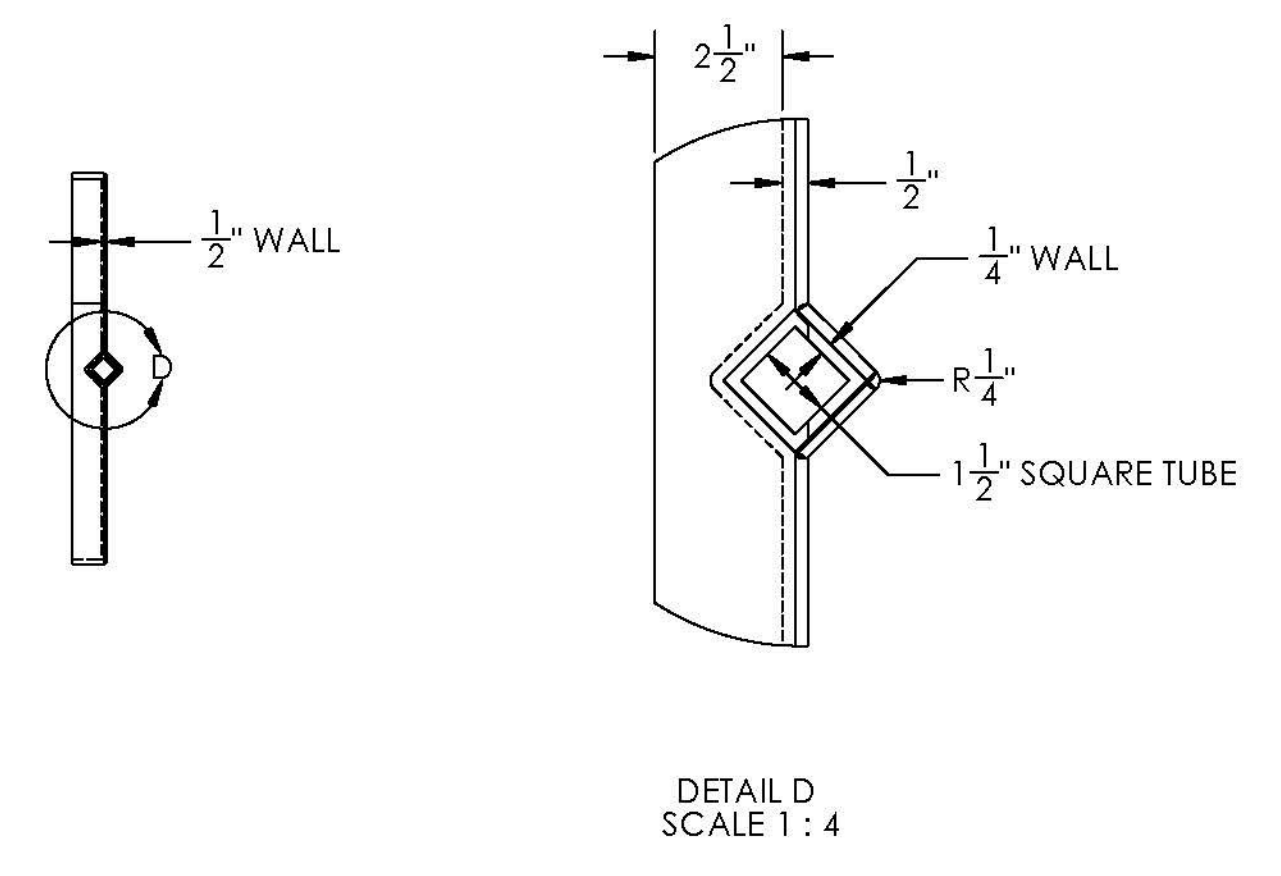




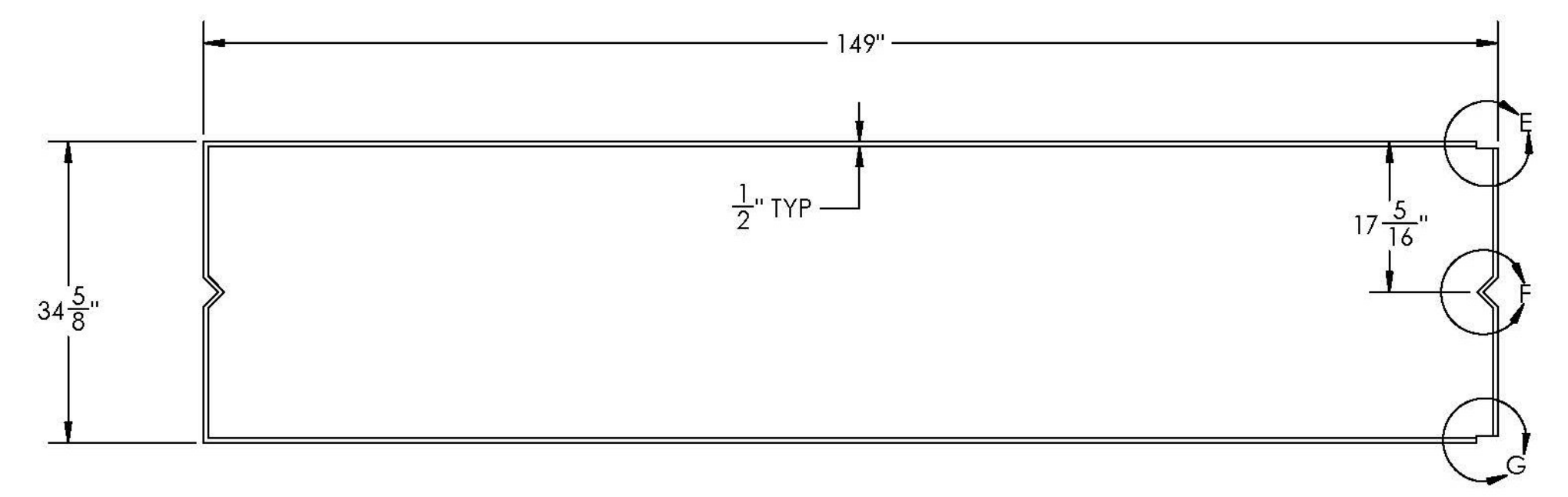
DATE	6/25/14
DESCRIPTION	FIXED FLANGE AND RADIUS DIMENSIONS
REV	1



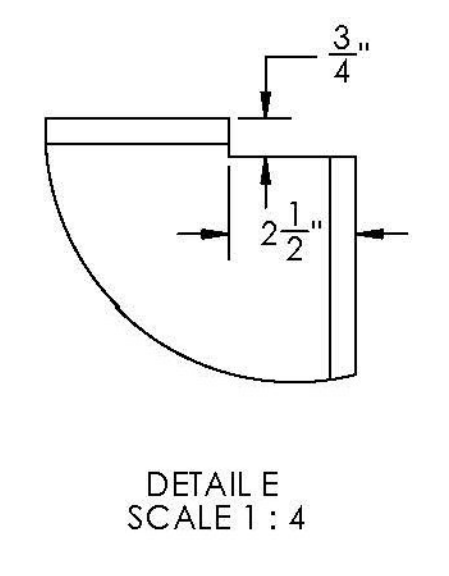
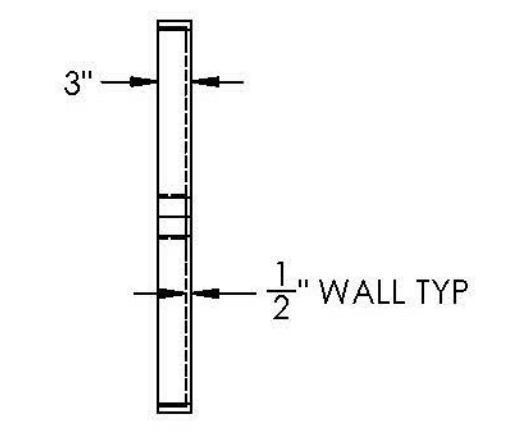
TRANSVERSE ROD BULKHEAD - PN 2
195 LB



TRANSVERSE RADIUS BULKHEAD - PN 6
(PN 8 OPPOSITE HAND)
82 LB

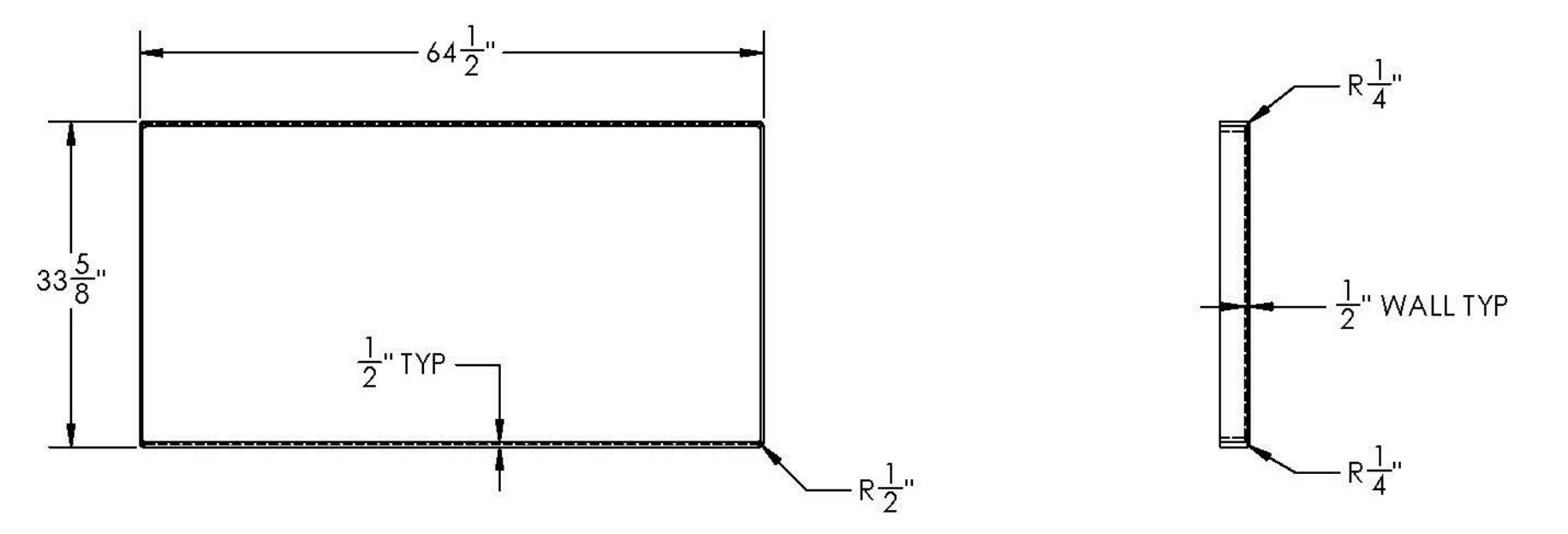


INTERIOR LONGITUDINAL BULKHEAD - PN 3
203 LB

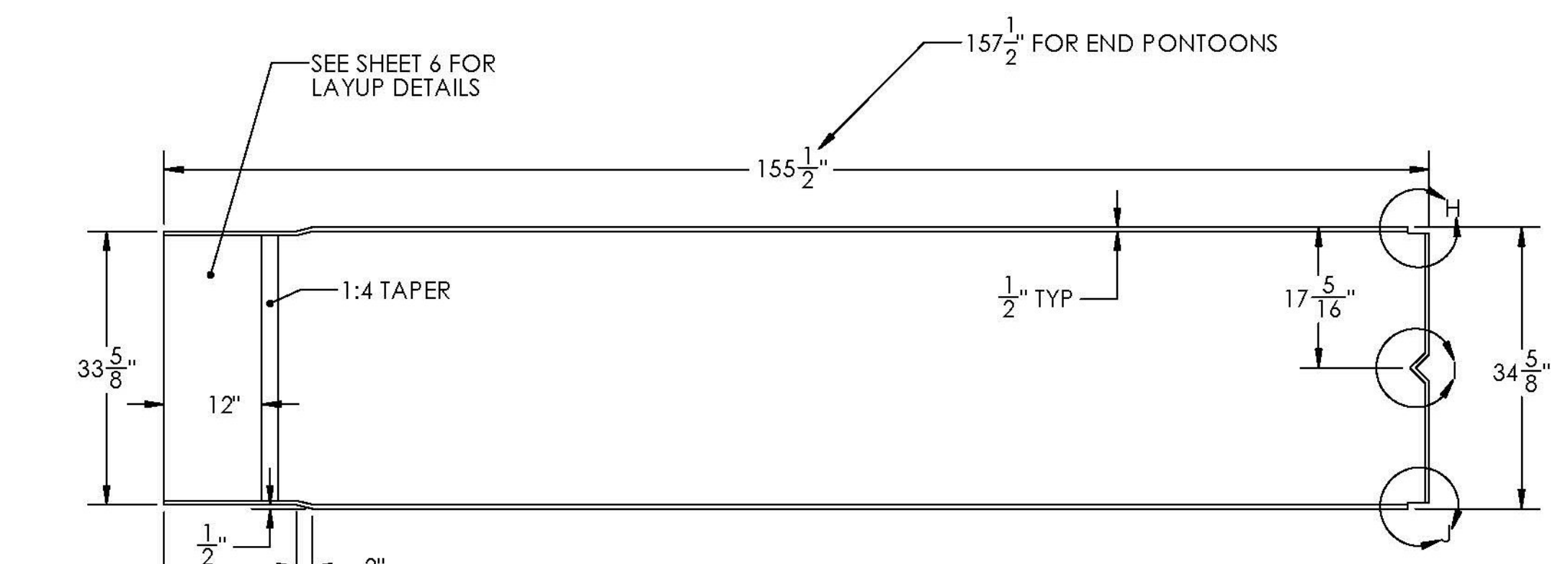


Vermont Agency of Transportation
RECEIVED
ON: **June 30, 2014**
and Checked for
CONFORMANCE
BY: Jennifer Fitch DATE: 07/07/2014

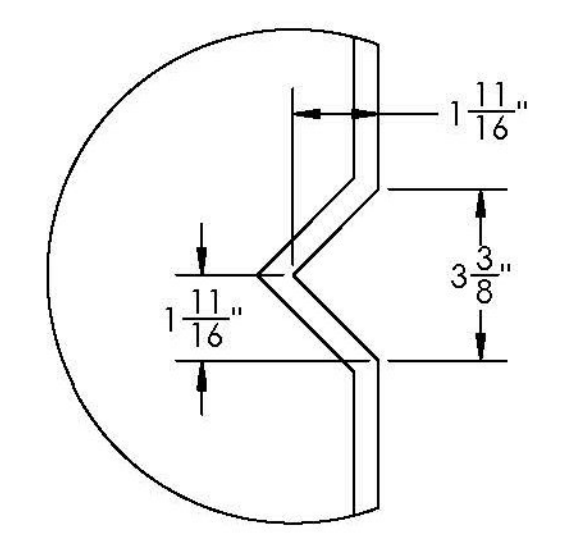
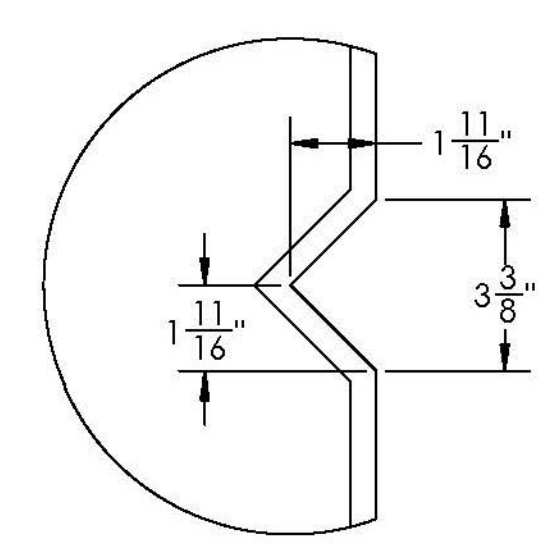
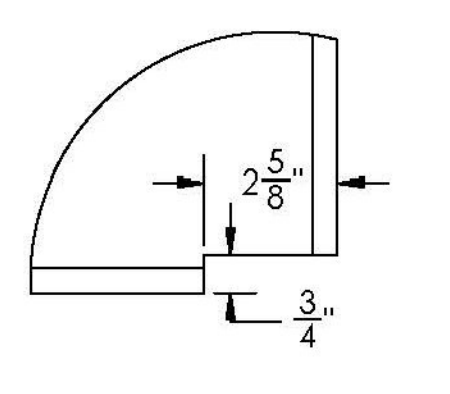
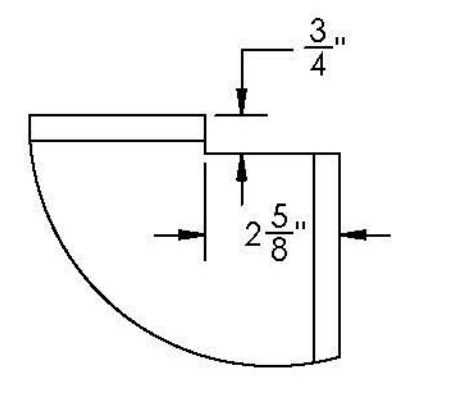
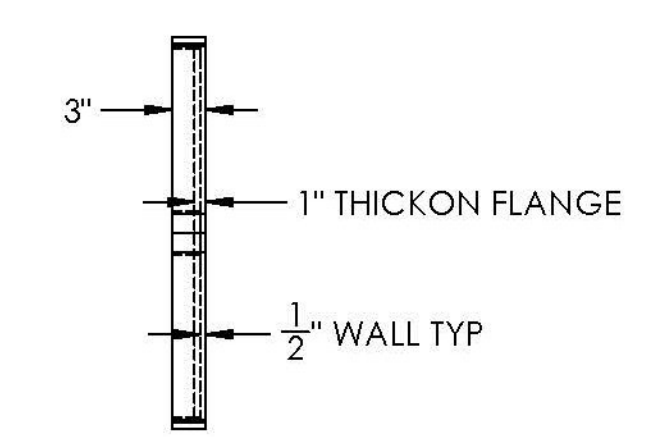
T.Y. LIN INTERNATIONAL
THE STAMPED DOCUMENTS ARE HEREBY:
X APPROVED
APPROVED AS NOTED
REVISE AND RESUBMIT
SEE TRANSMITTAL FOR ADDITIONAL INFORMATION AS APPLICABLE.
THIS REVIEW IS FOR GENERAL CONFORMANCE WITH DESIGN CONCEPT ONLY. ANY DEVIATION FROM THE PLANS OR SPECIFICATIONS NOT CLEARLY NOTED BY THE CONTRACTOR HAS NOT BEEN REVIEWED. REVIEW BY THE ENGINEER SHALL NOT RELIEVE THE CONTRACTOR OF THE CONTRACTUAL RESPONSIBILITY FOR ANY ERRORS OR DEVIATION FROM THE CONTRACT REQUIREMENTS.
JOSH OLUND 07/03/2014
REVIEWER DATE



TRANSVERSE SQUARE BULKHEAD - PN 7
86 LB



END LONGITUDINAL BULKHEAD - PN 4
223 LB



SEAL	
DIMENSIONS ARE IN INCHES	
TOLERANCES: +0, -1/16"	
FRACTIONAL ANGULAR MACH	BEND ±
TWO PLACE DECIMAL	±
THREE PLACE DECIMAL	±
DRAWN BY	DATE
ML	6/4/14
CHKD BY	DATE
JM	6/4/14
PROJECT	BROOKFIELD FRP PONTOONS
CUSTOMER	MILLER CONST. /ATRANS
SHEET	BULKHEAD DIMENSIONS
WEIGHT:	NOTED
DESCRIPTION:	FABRICATION
SCALE	1 : 18
WO NO.	8420
CONTRACT NO.	9185
DWG NO.	8420-6
SHEET	7 OF 16
PONTOON	PART NO.
1-10	NOTED