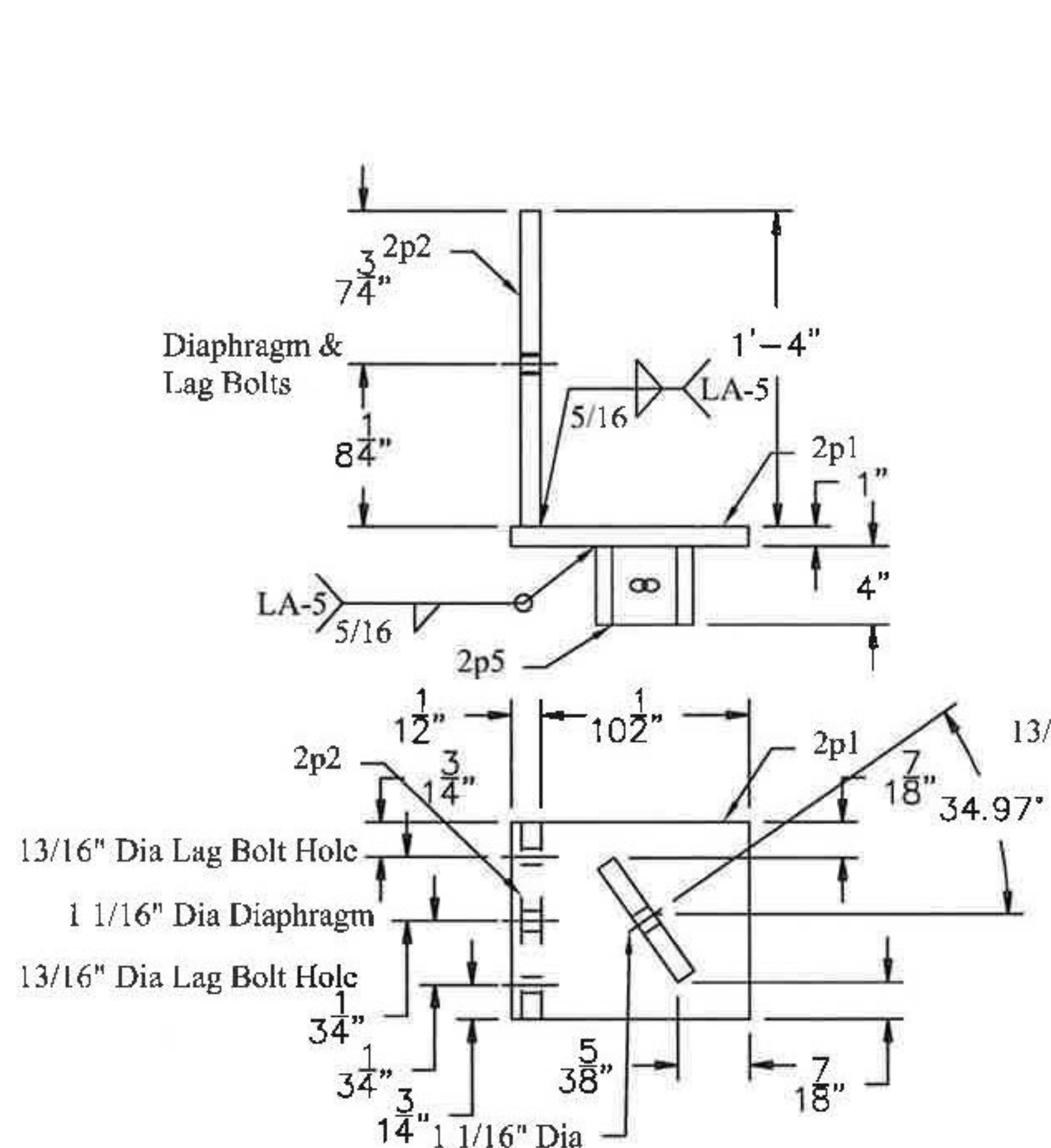
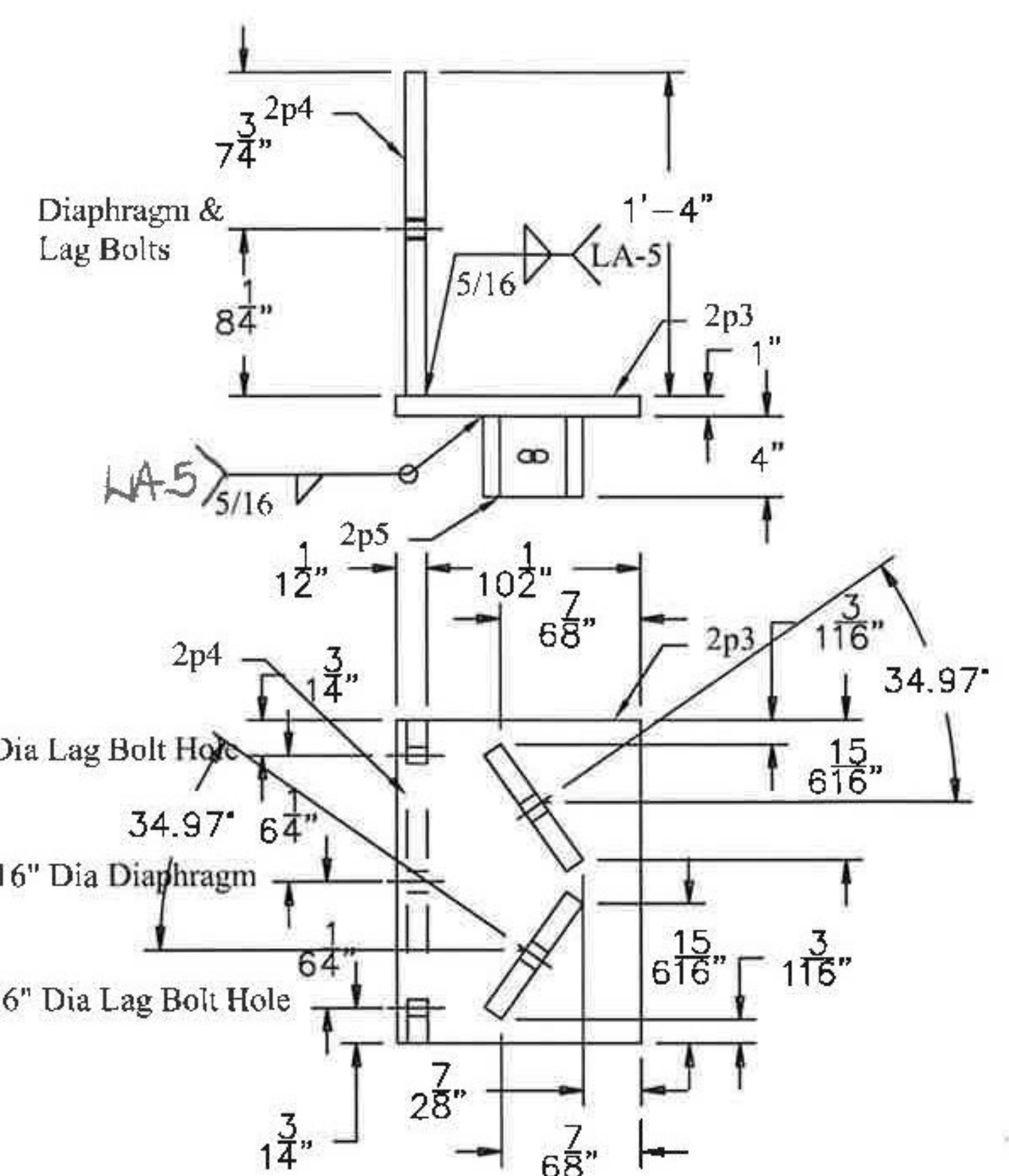


BILL OF MATERIALS

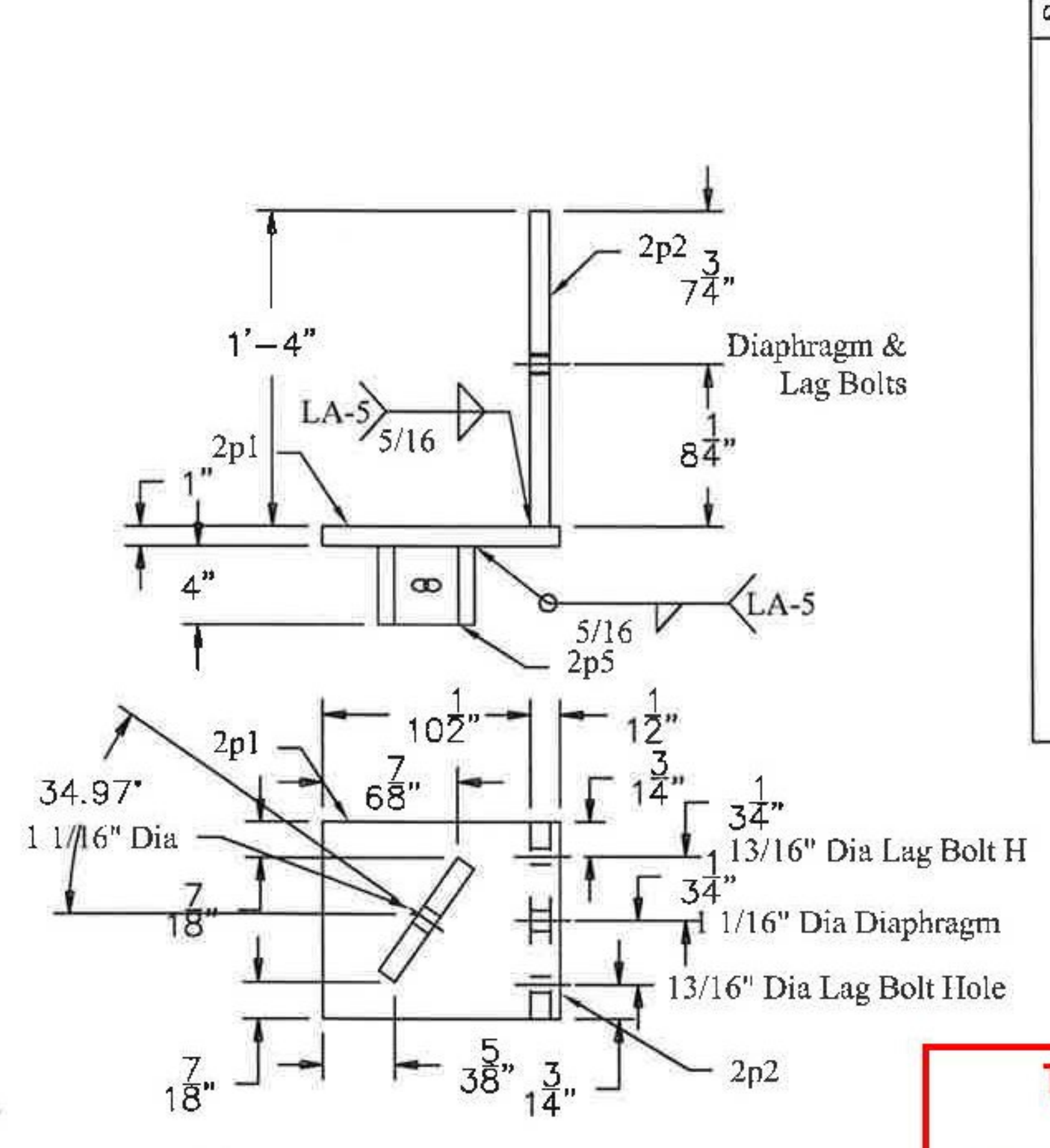
QTY	MARK	SHAPE	LENGTH	REMARKS
4	2C1	CROSS FRAME BRACKET 1		
4	2p1	Plate 1" x 10"	1'-0"	
4	2p2	Plate 1" x 10"	1'-4"	
4	2p5	Plate 1" x 4"	0'-7"	
4	2C2	CROSS FRAME BRACKET 2		
4	2p3	Plate 1" x 12"	1'-4"	
4	2p4	Plate 1" x 16"	1'-4"	
8	2p5	Plate 1" x 4"	0'-7"	
4	2C3	CROSS FRAME BRACKET 3		
4	2p1	Plate 1" x 10"	1'-0"	
4	2p2	Plate 1" x 10"	1'-4"	
4	2p5	Plate 1" x 4"	0'-7"	



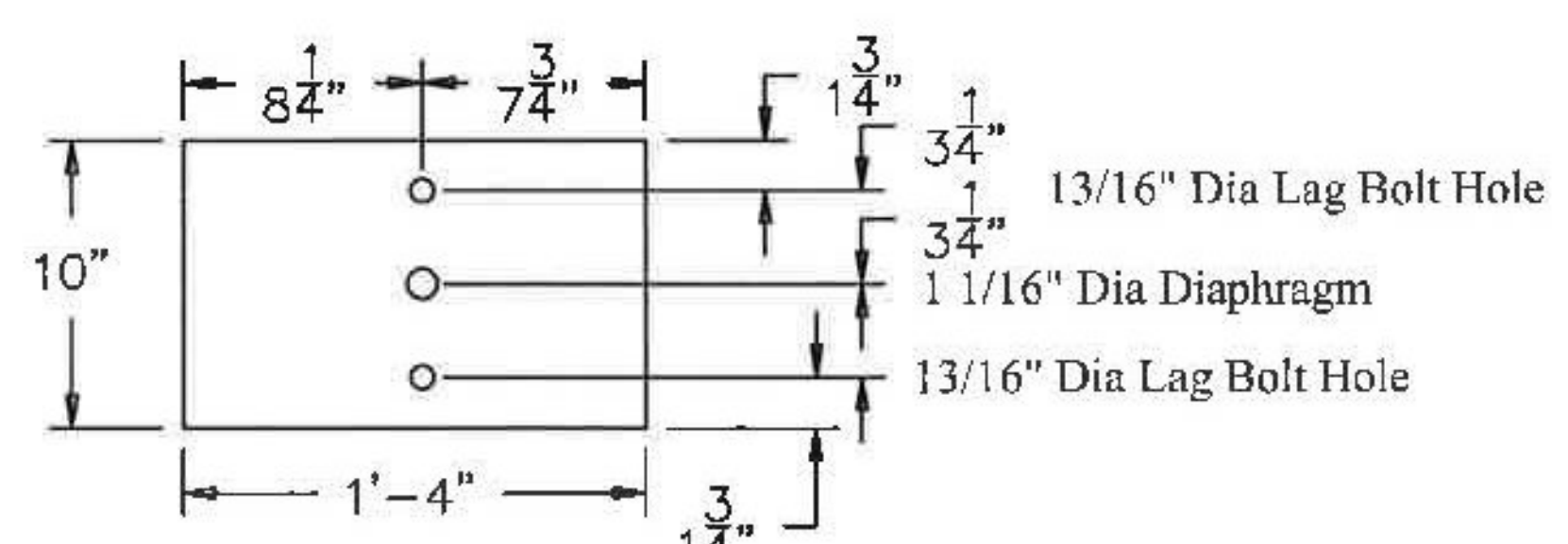
(4) - 2C1 CROSS FRAME BACKET



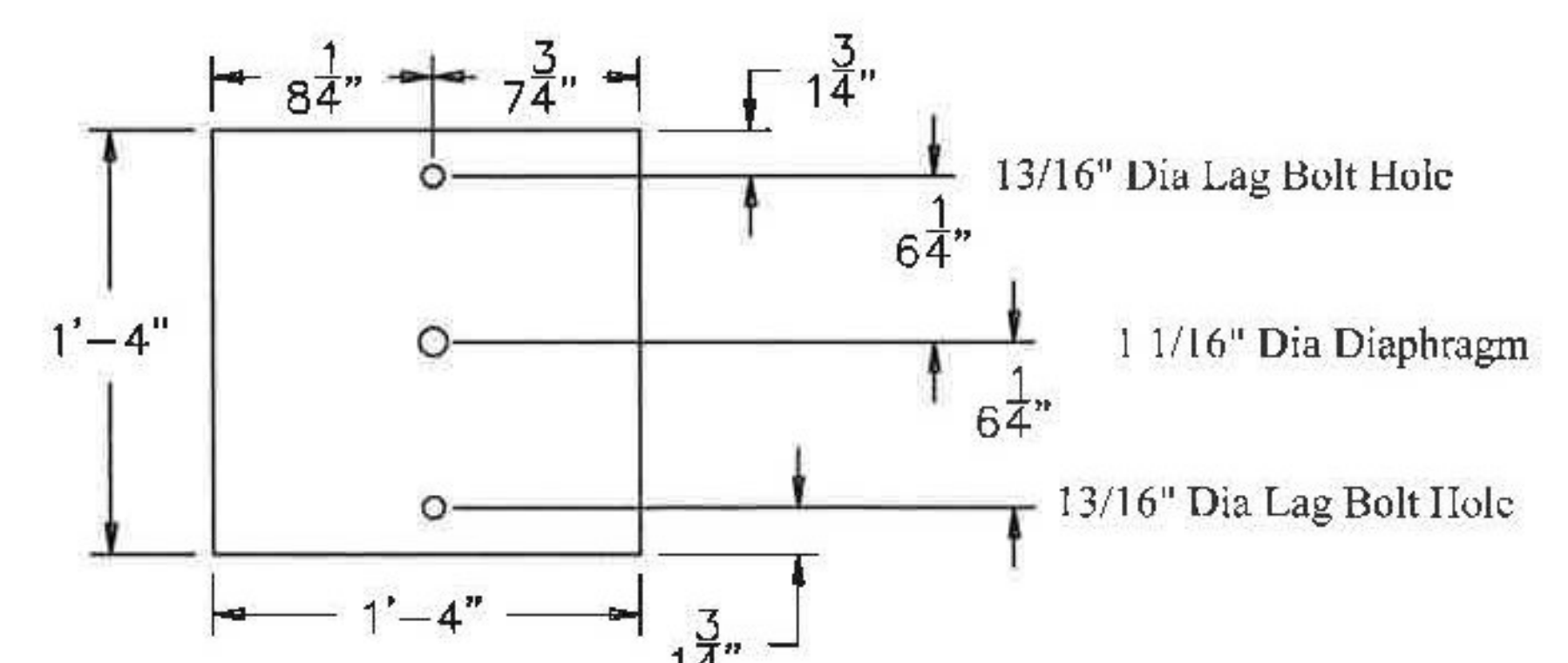
(4) - 2C2 CROSS FRAME BACKET



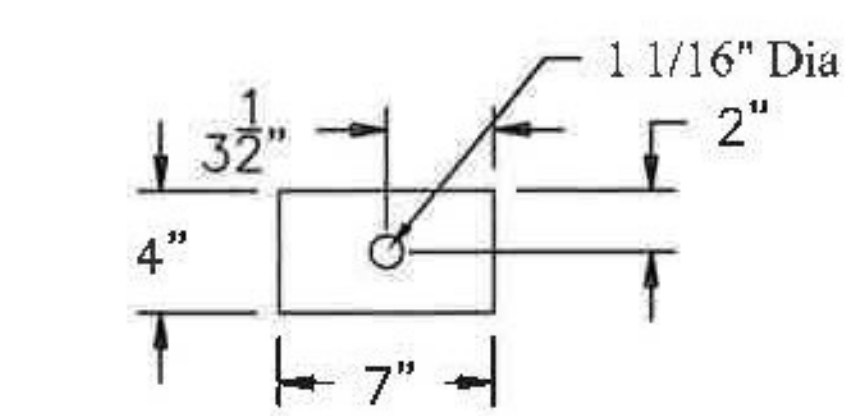
(4) - 2C3 CROSS FRAME BACKET



(8) - 2p2 Plate Details



(4) - 2p4 Plate Details



(16) - 2p5 Plate Details

T.Y. LIN INTERNATIONAL
 THE STAMPED DOCUMENTS ARE HEREBY:
 APPROVED
 APPROVED AS NOTED
 REVISE AND RESUBMIT
 SEE TRANSMITTAL FOR ADDITIONAL INFORMATION AS APPLICABLE.
 THIS REVIEW IS FOR GENERAL CONFORMANCE WITH DESIGN CONCEPT ONLY. ANY DEVIATION FROM THE PLANS OR SPECIFICATIONS NOT CLEARLY NOTED BY THE CONTRACTOR HAS NOT BEEN REVIEWED. REVIEW BY THE ENGINEER SHALL NOT RELIEVE THE CONTRACTOR OF THE CONTRACTUAL RESPONSIBILITY FOR ANY ERRORS OR DEVIATION FROM THE CONTRACT REQUIREMENTS.
 JOSH OLUND 08/08/2014
 REVIEWER DATE

DRAWING COVERS

TIMBER BRIDGE CROSS FRAME BRACKETS	
PROJECT	BROOKFIELD BRIDGE FLBR(2)
LOCATION	VT ROUTE 85 OVER WESTERN AND EASTERN RAMP
ENGINEER	T Y LIN INTERNATIONAL
CUSTOMER	MILLER CONSTRUCTION

REV NO.	DATE	DESCRIPTION
3	5-24-2014	REVISED PER APPROVAL COMMENTS
2	6-17-2014	REVISED PER APPROVAL COMMENTS
1	5-30-2014	REVISED PER APPROVAL COMMENTS
0	5-5-2014	SUBMITTED FOR APPROVAL

HOLES AS NOTED
 MATERIAL: AASHTO M 270 GRADE 36 GALV

MERRIMACK SHEET METAL

119 HALL STREET
 CONCORD NH 03301

Tel: 603.224.7766
 Fax 603.224.7925

DRAWN BY: RL
 CHECKED BY: JD
 JOB NO: #5414
 DWG: F2

Vermont Agency of Transportation
RECEIVED
 ON: July 28, 2014
 and Checked for
CONFORMANCE
 BY: Jennifer Fitch DATE: 08/08/2014