

**APPROVER NOTE:**  
PLEASE VERIFY  
HOLE DIAMETER  
IS ACCEPTABLE.

**1" HOLES ACCEPTABLE FOR  
ABUTMENT BEARINGS**

**GENERAL NOTES:**

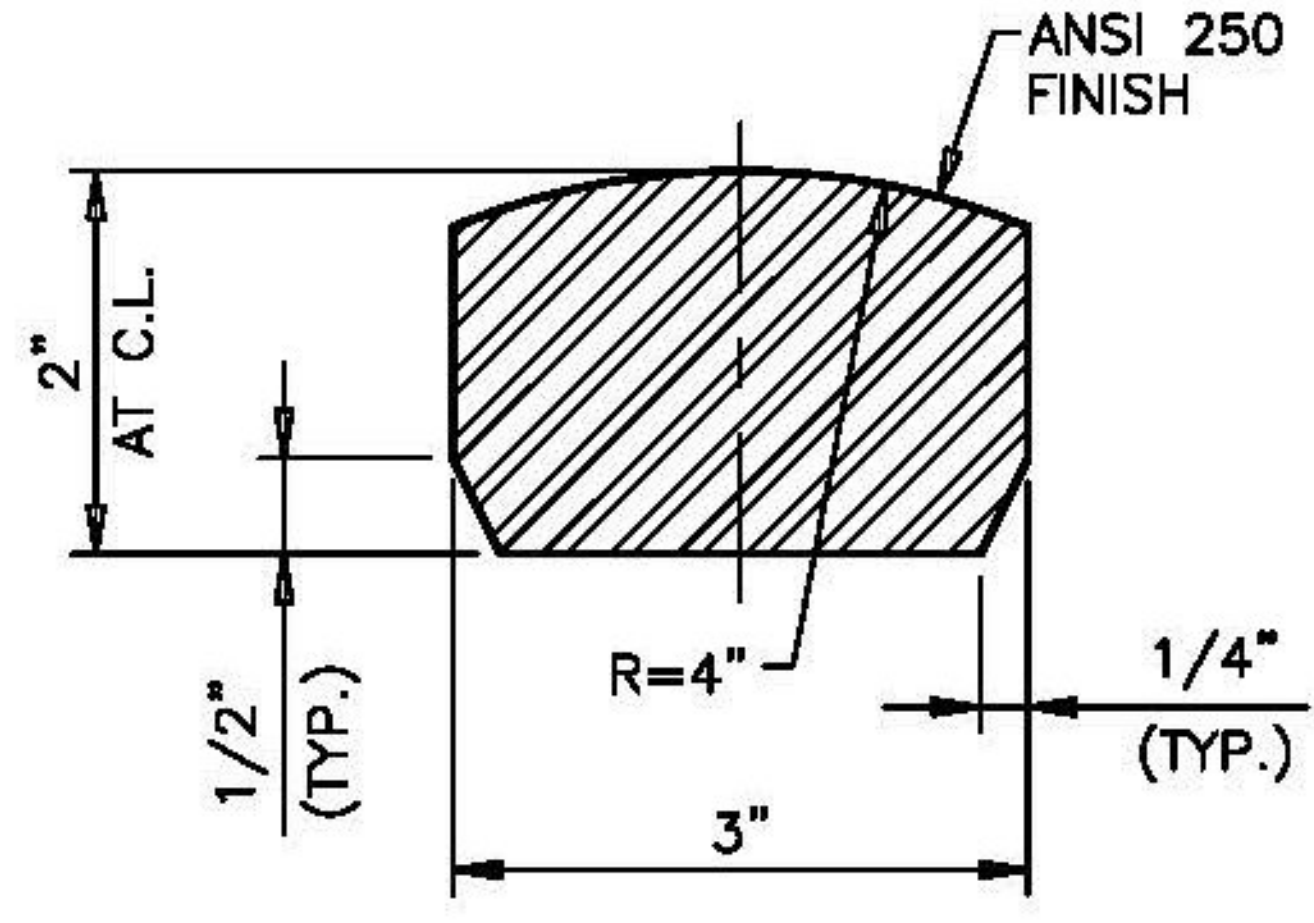
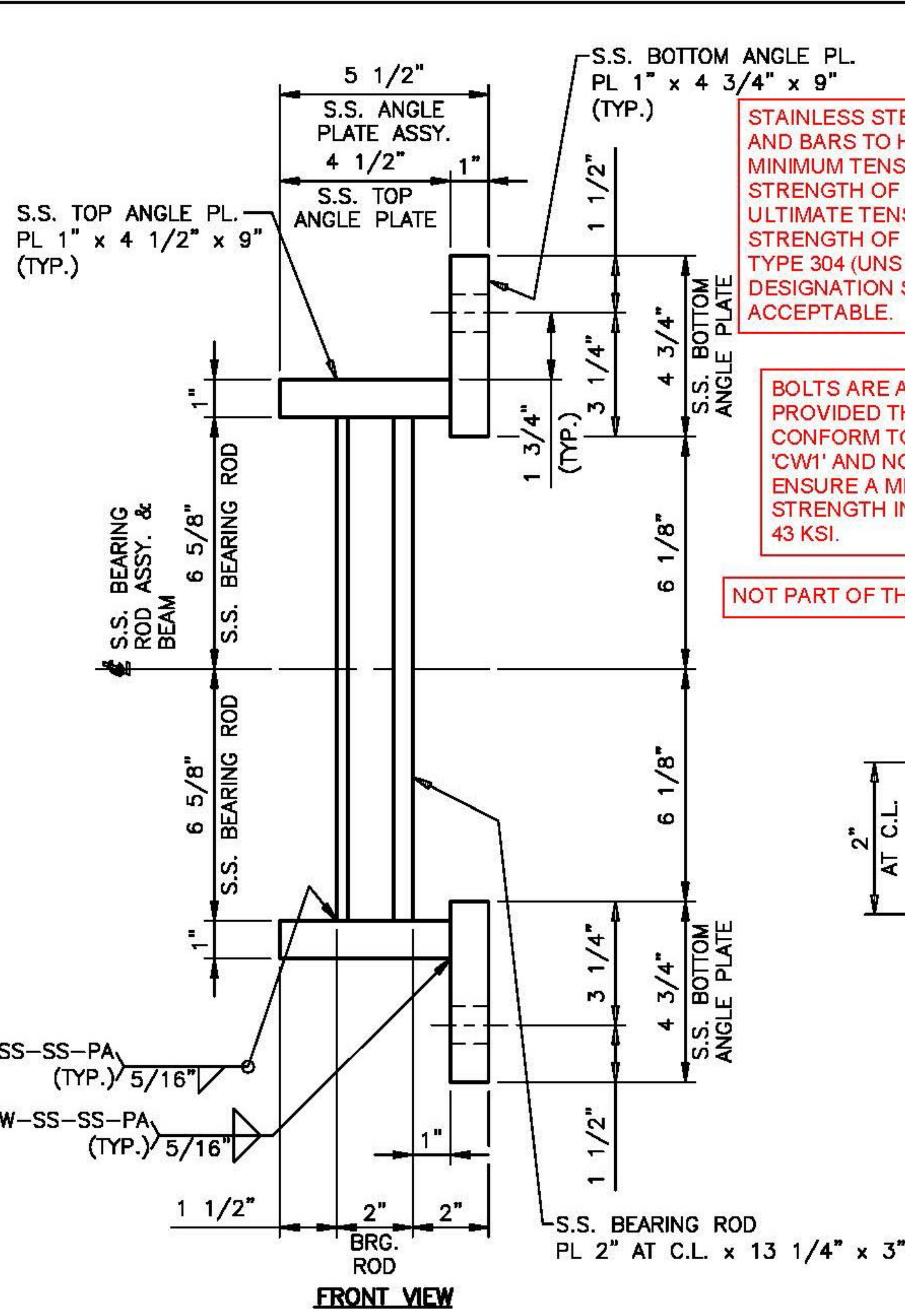
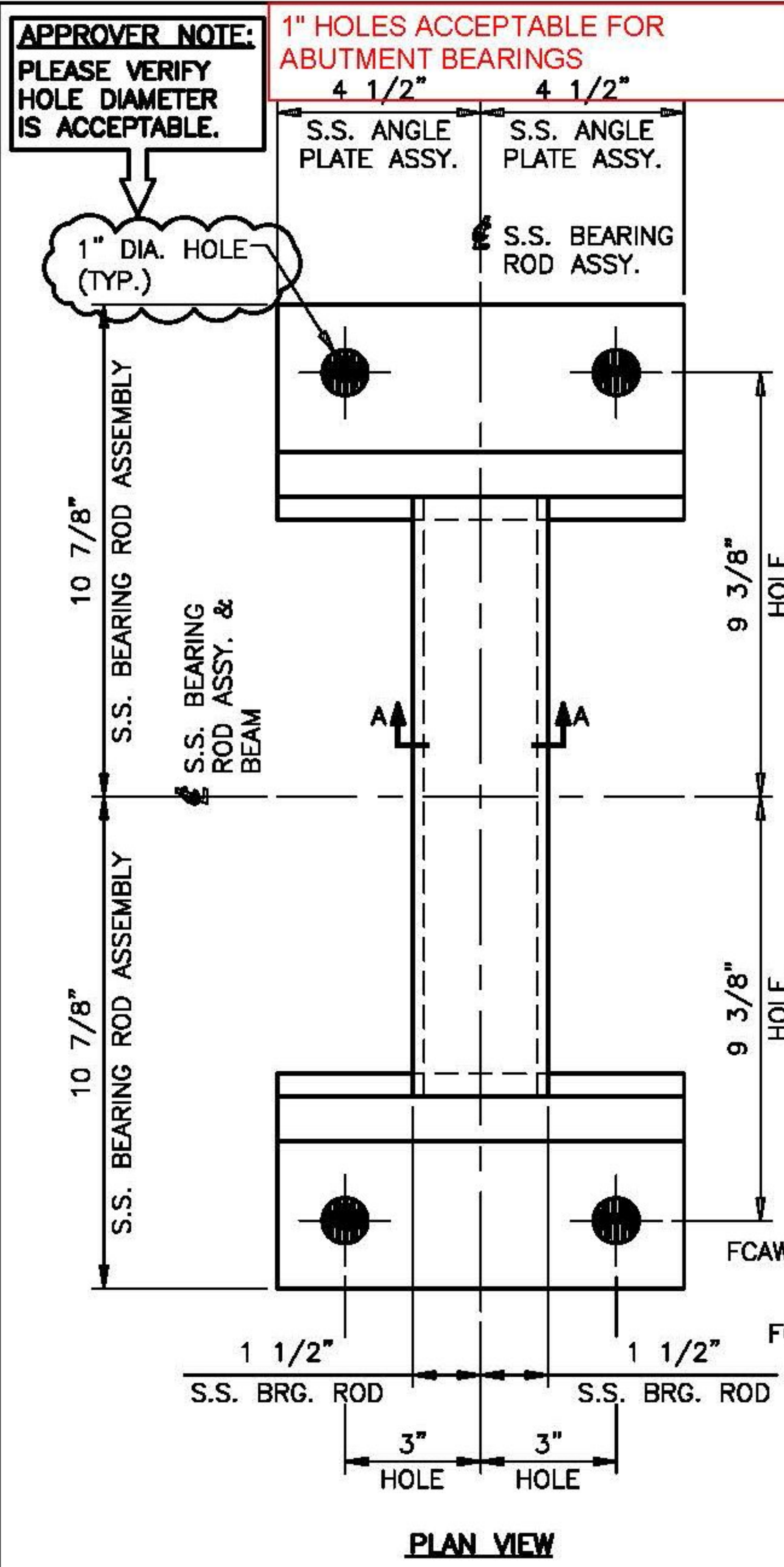
1. ALL BEARINGS SHALL CONFORM TO APPLICABLE SUBSECTIONS OF SECTION 731.01 OF THE 2011 VTAOT STANDARD SPECIFICATIONS AND SECTION "BEARING DEVICE ASSEMBLY, FLOATING BRIDGE" OF THE SPECIAL PROVISIONS FOR: BROOKFIELD BRFLBR (2) DATED 02/11/14.

2. MATERIAL:
- STEEL COMPONENTS: ASTM A240 TYPE 304 (UNPAINTED)
  - S.S. SWEDGE ANCHOR BOLT: ASTM F593, ALLOY GROUP 2, CONDITION CW
  - 7/8" DIA. S.S. CONNECTION BOLT: ASTM F593, ALLOY GROUP 2, CONDITION CW
  - 7/8" DIA. S.S. HEX NUT: ASTM F594, ALLOY GROUP 2, CONDITION CW
  - 7/8" DIA. S.S. WASHER: TYPE 316 STAINLESS STEEL
  - 3/4" DIA. S.S. CONNECTION BOLT: ASTM F593, ALLOY GROUP 2, CONDITION CW
  - 3/4" DIA. S.S. HEX NUT: ASTM F594, ALLOY GROUP 2, CONDITION CW
  - 3/4" DIA. S.S. WASHER: TYPE 316 STAINLESS STEEL
  - BEARING PAD: MIL-C-822
  - ~~PLAIN PAD (IN ROLLS): 60 DUROMETER GRADE 3 NEOPRENE~~
3. COSMEC REPRESENTATIVE KERRY MARCHAND: (508) 455-3290

STAINLESS STEEL PLATES AND BARS TO HAVE A MINIMUM TENSILE YIELD STRENGTH OF 30 KSI AND ULTIMATE TENSILE STRENGTH OF 70 KSI. TYPE 304 (UNS DESIGNATION S30400) IS ACCEPTABLE.

BOLTS ARE ACCEPTABLE PROVIDED THEY CONFORM TO CONDITION 'CW1' AND NOT 'CW2' TO ENSURE A MINIMUM YIELD STRENGTH IN EXCESS OF 43 KSI.

NOT PART OF THIS SUBMITTAL



**SECTION A-A**  
BEARING ROD  
ASTM A240 TYPE 304  
PL 2" AT C.L. x 13 1/4" x 3  
(16) REQUIRED

**T.Y. LIN INTERNATIONAL**

THE STAMPED DOCUMENTS ARE HEREBY:

APPROVED  
 APPROVED AS NOTED  
 REUSE AND RESUBMIT

SEE TRANSMITTAL FOR ADDITIONAL INFORMATION AS APPLICABLE.

THIS REVIEW IS FOR GENERAL CONFORMANCE WITH DESIGN CONCEPT ONLY. ANY DEVIATION FROM THE PLANS OR SPECIFICATIONS NOT CLEARLY NOTED BY THE CONTRACTOR HAS NOT BEEN REVIEWED. REVIEW BY THE ENGINEER SHALL NOT RELIEVE THE CONTRACTOR OF THE CONTRACTUAL RESPONSIBILITY FOR ANY ERRORS OR DEVIATION FROM THE CONTRACT REQUIREMENTS.

JOSH OLUND 06/17/2014  
REVIEWER DATE

Vermont Agency of Transportation  
**RECEIVED**  
ON: June 11, 2014  
and Checked for  
**CONFORMANCE**  
BY: Jennifer Fitch DATE: 06/18/2014

**S.S. BEARING ROD ASSEMBLY  
MARK: BRA1**  
(8) LOCATED @ ABUTMENT 1  
(8) LOCATED @ ABUTMENT 2  
(16) REQUIRED

STATE OF VERMONT AGENCY OF TRANSPORTATION		
VT ROUTE 65 (MINOR COLLECTOR) BRIDGE NO. 2 TOWN OF BROOKFIELD		
STATE	COUNTY	CONTROL NO.
VT	ORANGE	NA
PROJECT NO.: BRFLBR(2)		
COSMEC, INC. STAINLESS STEEL BEARING ASSY.'S		
1501 ROCKY RIDGE ROAD P.O. BOX 2159 ATHENS, TEXAS 75751		
SCALE: NONE	DRAWN BY: MH	CHECKED BY: SL
	DATE: 05/28/14	DATE: 05/08/14
SHEET 1 OF 7 JOB NO.: 12445		
REV.	DESCRIPTION	BY DATE CHKD DATE
CUSTOMER MILLER CONSTRUCTION, INC.		DRAWING NUMBER 12445-D1
		REV. 0