

Vermont Agency of Transportation

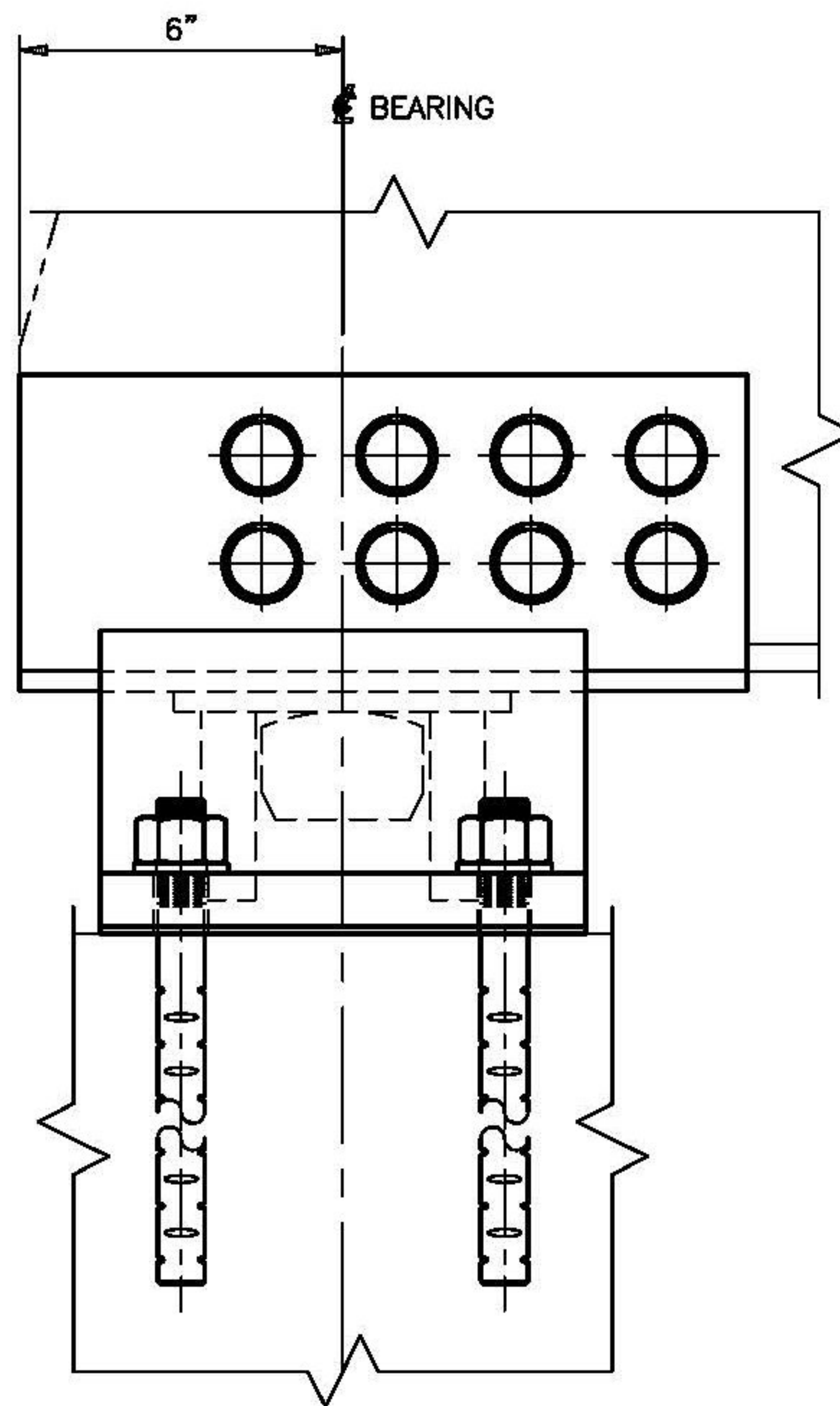
RECEIVED

ON: June 11, 2014

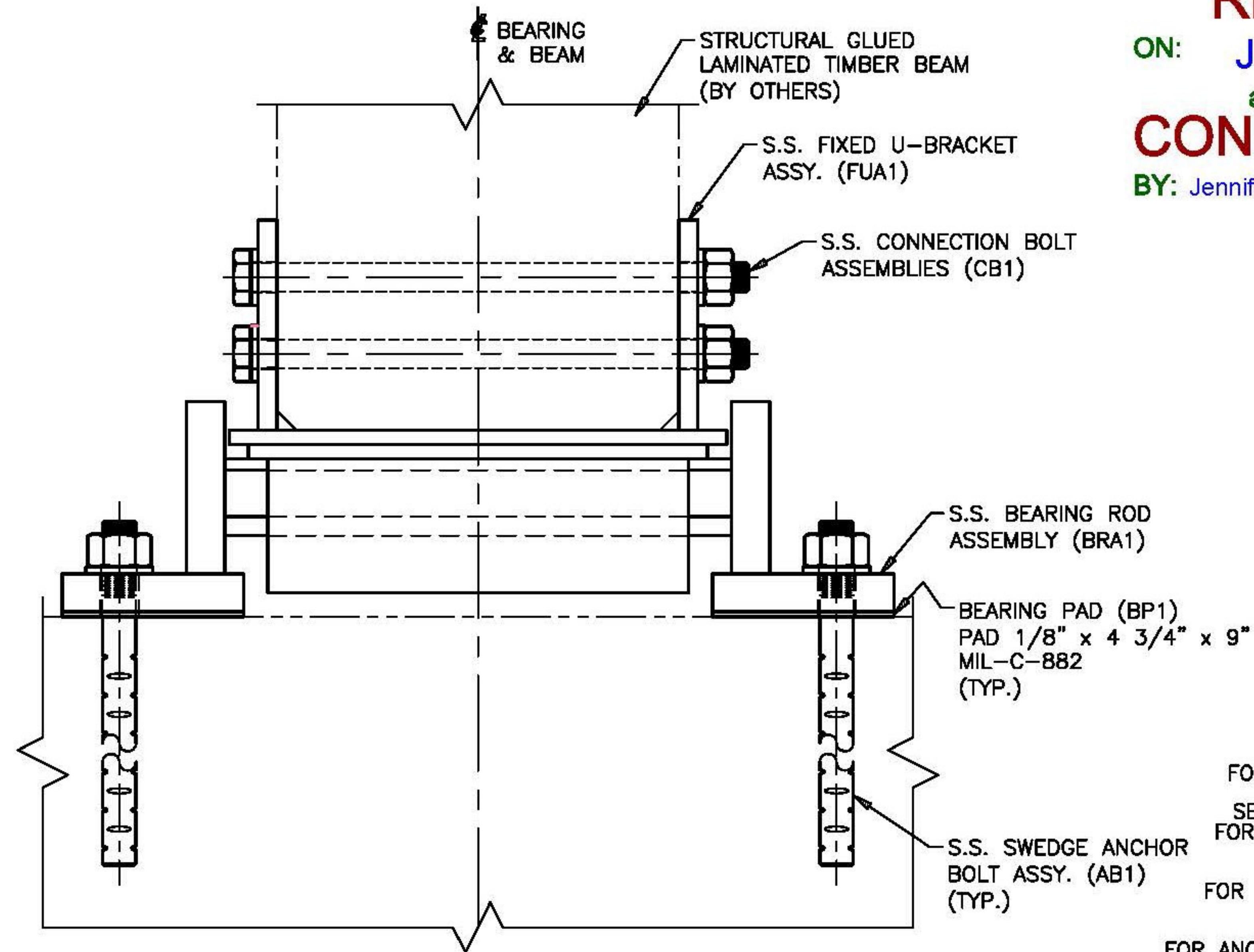
and Checked for

CONFORMANCE

BY: Jennifer Fitch DATE: 06/18/2014



ELEVATION VIEW



FRONT VIEW

FIXED BEARING ASSEMBLY INSTALLATION DIAGRAM

- (8) LOCATED @ ABUTMENT 1
- (8) LOCATED @ ABUTMENT 2
- (16) REQUIRED

SEE SHEET 1 FOR GENERAL NOTES

SEE SHEETS 1 & 3 FOR ASSEMBLY DETAILS

SEE SHEET 4 FOR COMPONENT DETAILS

SEE SHEET 7 FOR ANCHOR BOLT, CONNECTION BOLT & PAD DETAILS

STATE OF VERMONT
AGENCY OF TRANSPORTATION
VT ROUTE 65 (MINOR COLLECTOR)
BRIDGE NO. 2
TOWN OF BROOKFIELD

STATE	COUNTY	CONTROL NO.
VT	ORANGE	NA

PROJECT NO.: BRF FLBR(2)

COSMEC, INC.
STAINLESS STEEL BEARING ASSY.'S

Cosmec 1501 ROCKY RIDGE ROAD
P.O. BOX 2159
ATHENS, TEXAS 75751

SCALE: NONE	DRAWN BY: MH	CHECKED BY: SL
	DATE: 05/28/14	DATE: 05/08/14

SHEET E2 OF 4 **JOB NO.: 12445**

CUSTOMER	DRAWING NUMBER	REV.
MILLER CONSTRUCTION, INC.	12445-E2	0

T.Y. LIN INTERNATIONAL

THE STAMPED DOCUMENTS ARE HEREBY:

- X- APPROVED
- APPROVED AS NOTED
- REVISE AND RESUBMIT

SEE TRANSMITTAL FOR ADDITIONAL INFORMATION AS APPLICABLE.

THIS REVIEW IS FOR GENERAL CONFORMANCE WITH DESIGN CONCEPT ONLY. ANY DEVIATION FROM THE PLANS OR SPECIFICATIONS NOT CLEARLY NOTED BY THE CONTRACTOR HAS NOT BEEN REVIEWED. REVIEW BY THE ENGINEER SHALL NOT RELIEVE THE CONTRACTOR OF THE CONTRACTUAL RESPONSIBILITY FOR ANY ERRORS OR DEVIATION FROM THE CONTRACT REQUIREMENTS.

JOSH OLUND 06/17/2014
REVIEWER DATE

REV.	DESCRIPTION	BY	DATE	CHKD	DATE