

$$V = 121.33 \text{ CY}$$

UNCLASSIFIED CHANNEL

$$V = \left[0.5 \times \left(\frac{6.5 + 8.25}{2} \right) + 0.5 \times \left(\frac{8 + 8.25}{2} \right) \right] \times (1432.5 - 1429.5) / 9$$

$$V = 2.58 \text{ CY}$$

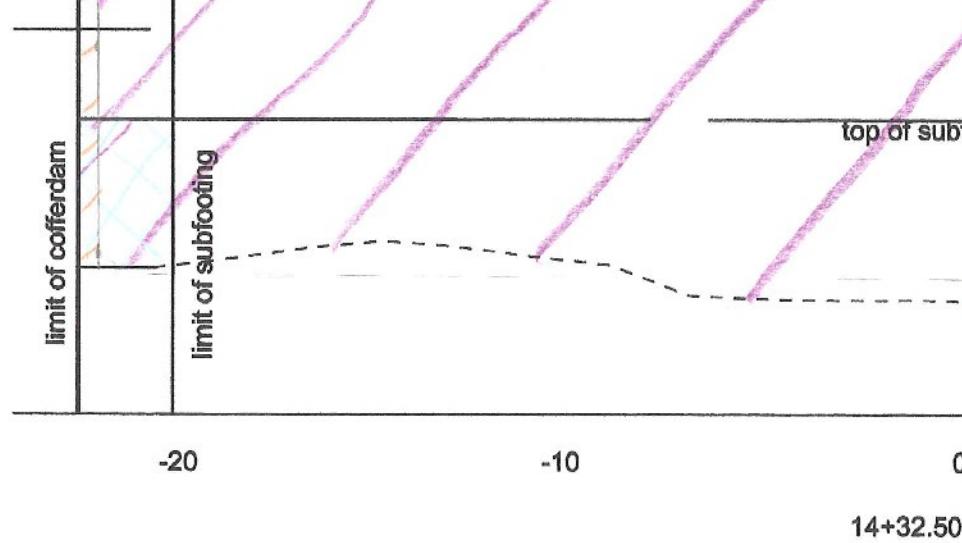
GRANULAR BACKFILL

$$V = \left[\left(2.5 \times \frac{4 + 4.25}{2} + 2.5 \times \frac{5.5 + 4}{2} \right) (1432.5 - 1429.5) \right] / 9$$

$$V = 7.40 \text{ CY}$$

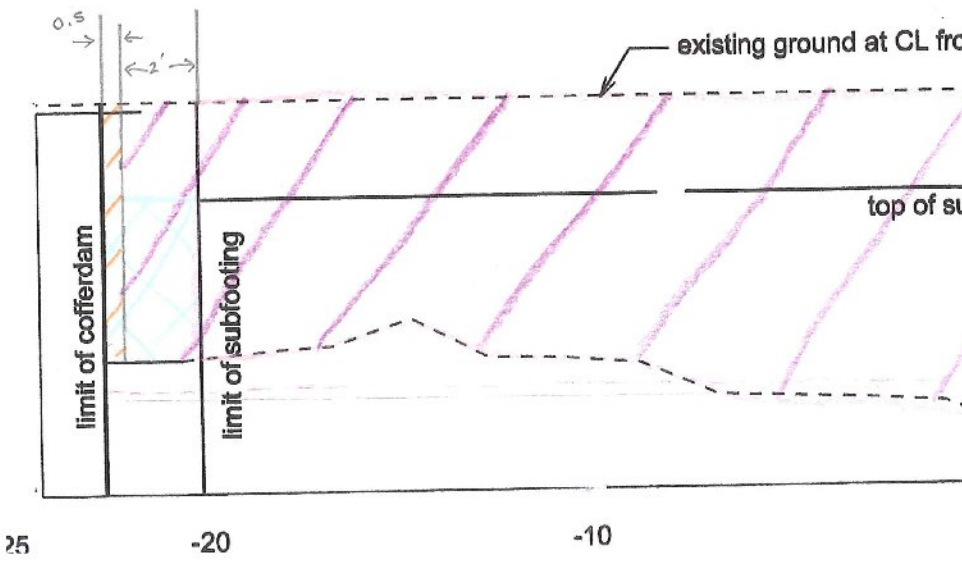
Common EXCAVATION

None.



Granular Backfill

Common Exc.



* BEGINNING OF FOOTING BASE

14+2