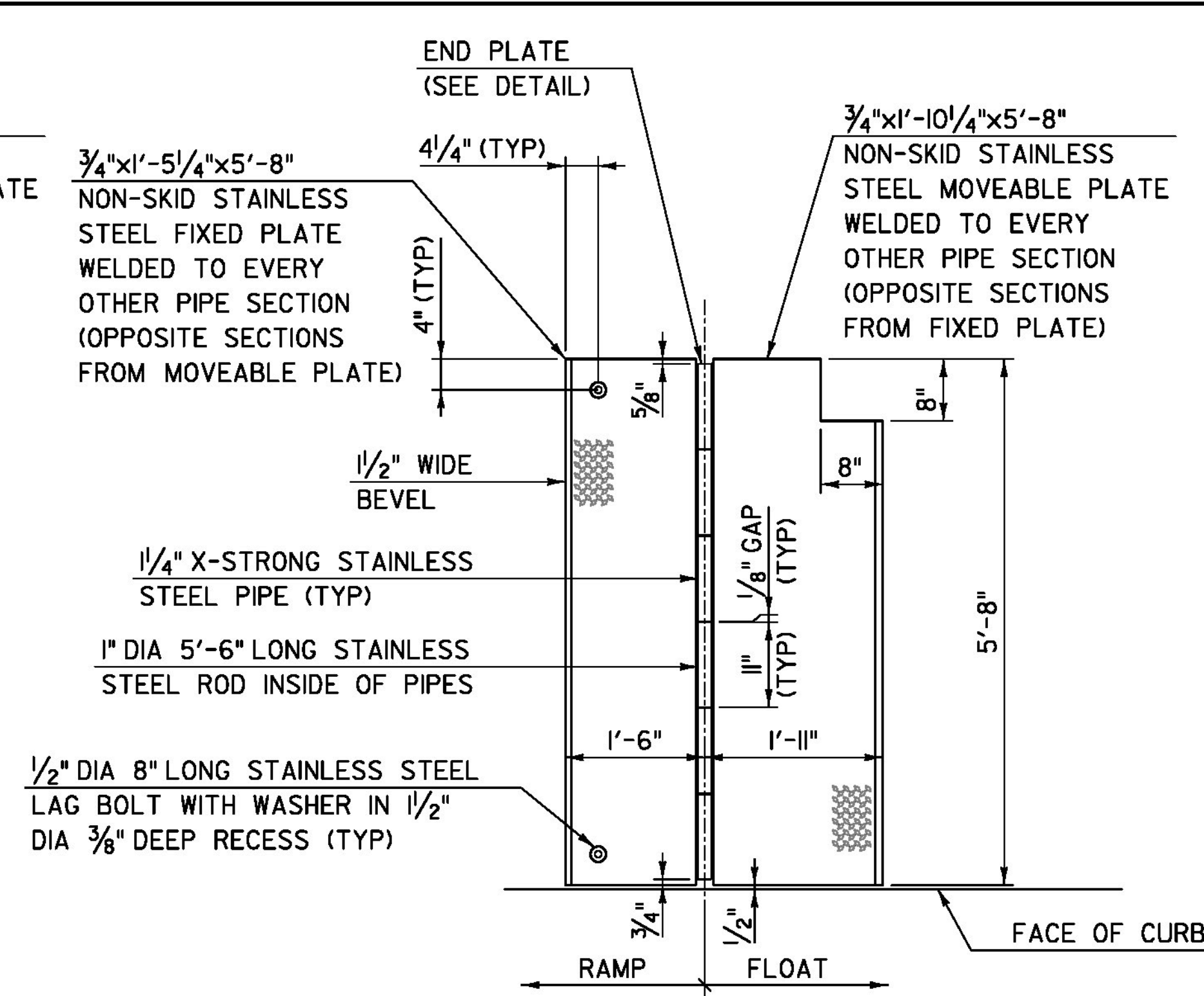
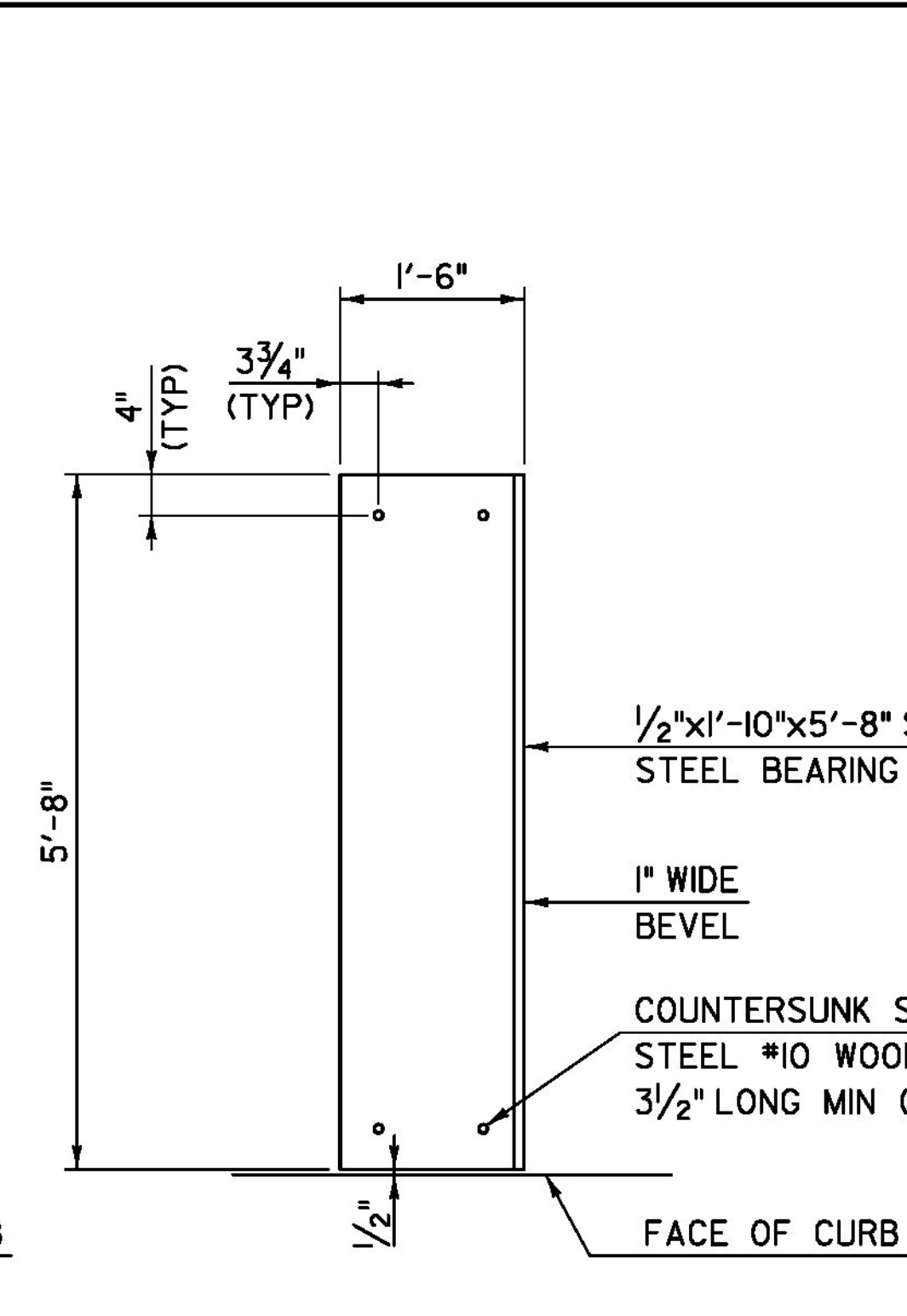


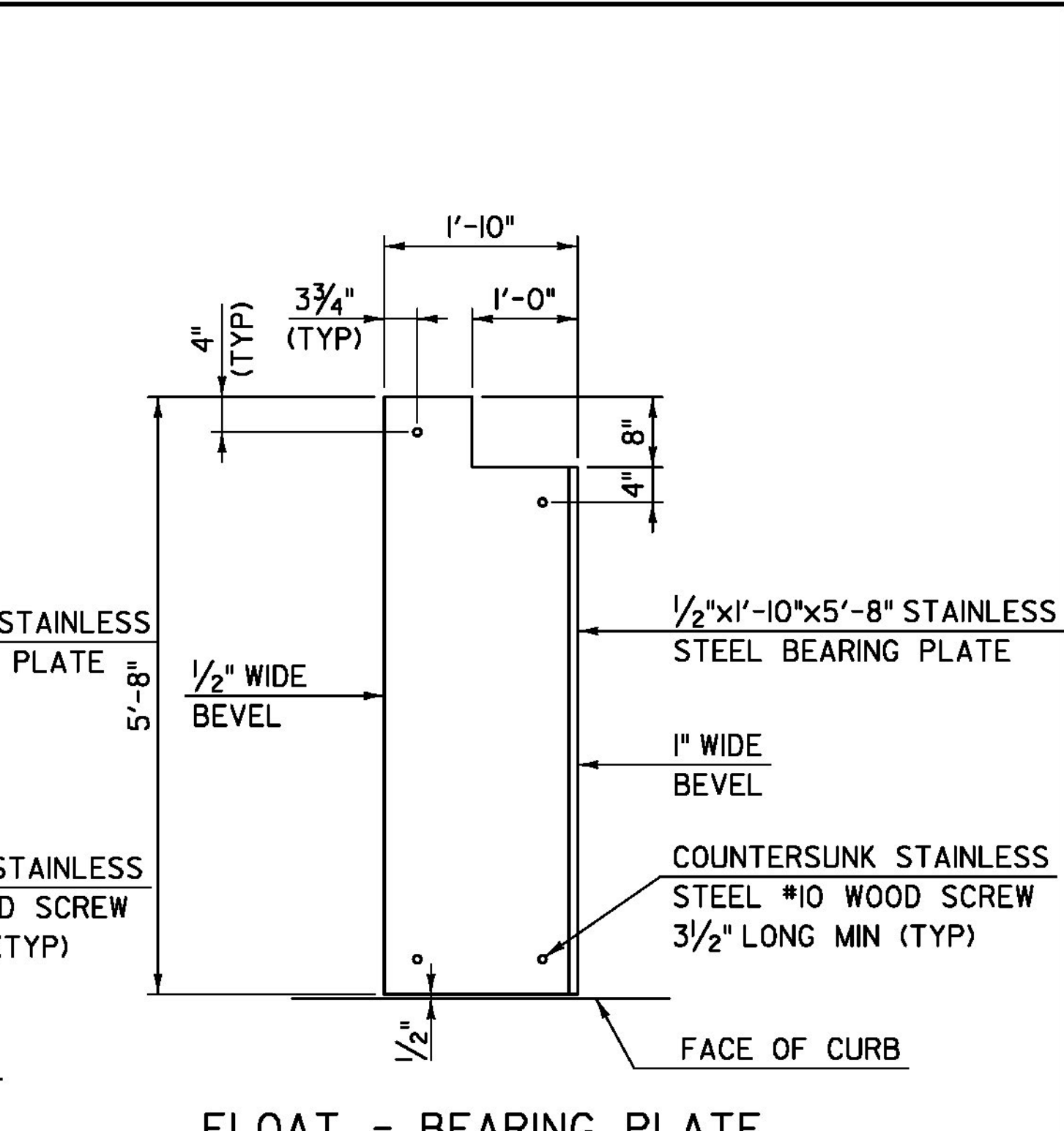
ABUTMENT / RAMP - SIDEWALK ASSEMBLY
SCALE: 3/4" = 1'-0"



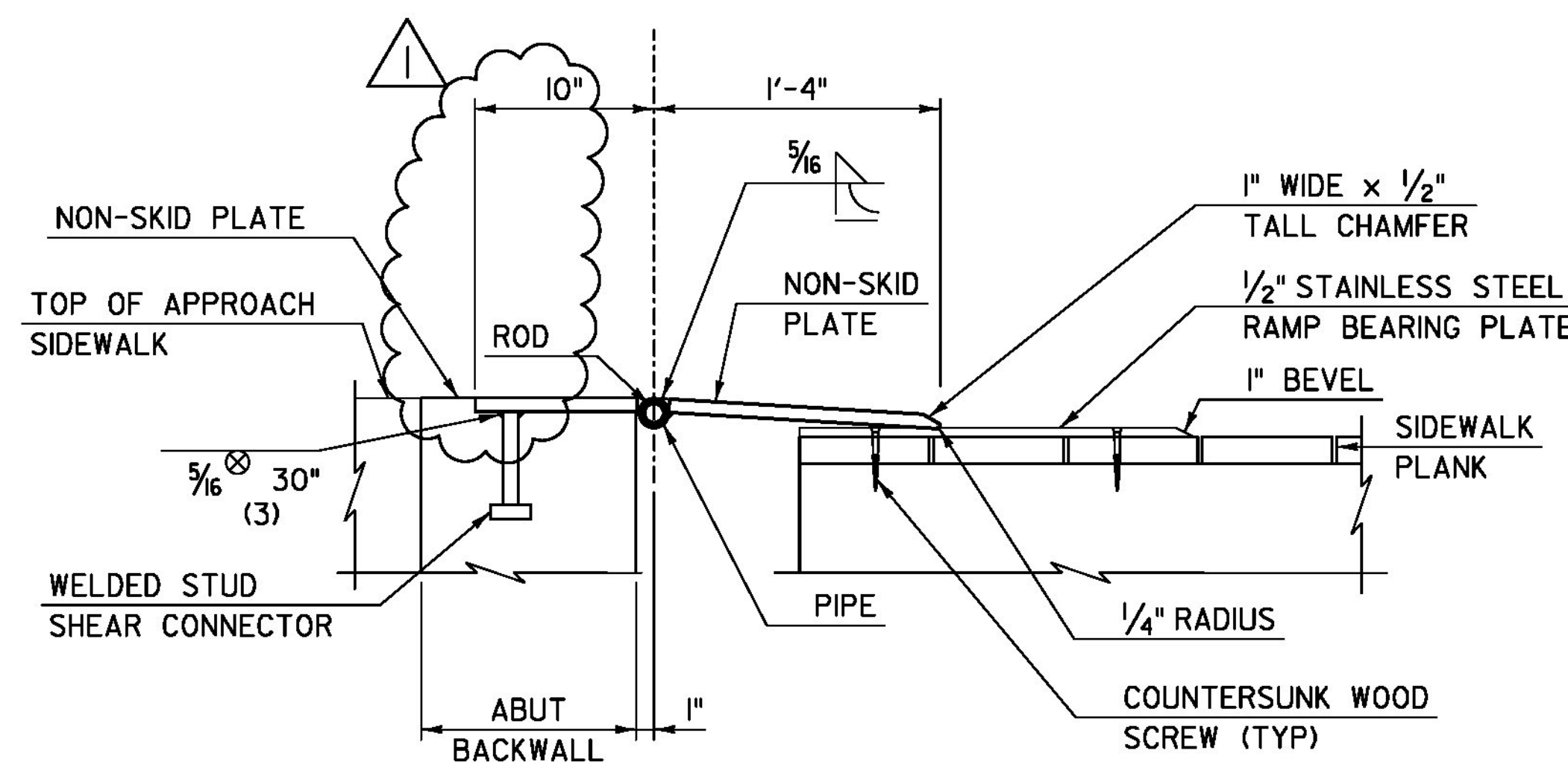
RAMP / FLOAT - SIDEWALK ASSEMBLY
SCALE: 3/4" = 1'-0"
(NW AND SE CORNERS OF FLOAT SHOWN)
(ASSEMBLIES AT SW AND NE CORNERS OF
FLOAT MIRRORED ABOUT CL ROADWAY)



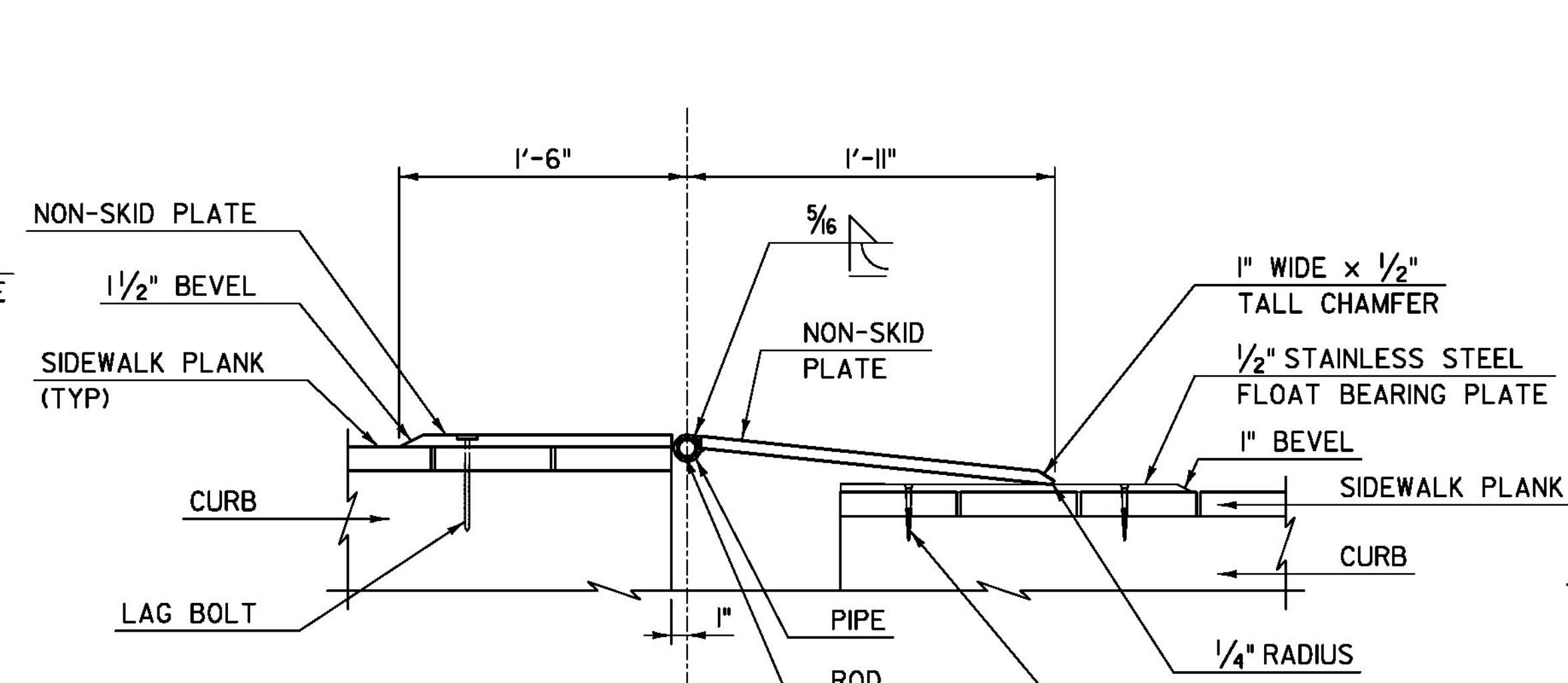
RAMP - BEARING PLATE
SCALE: 3/4" = 1'-0"



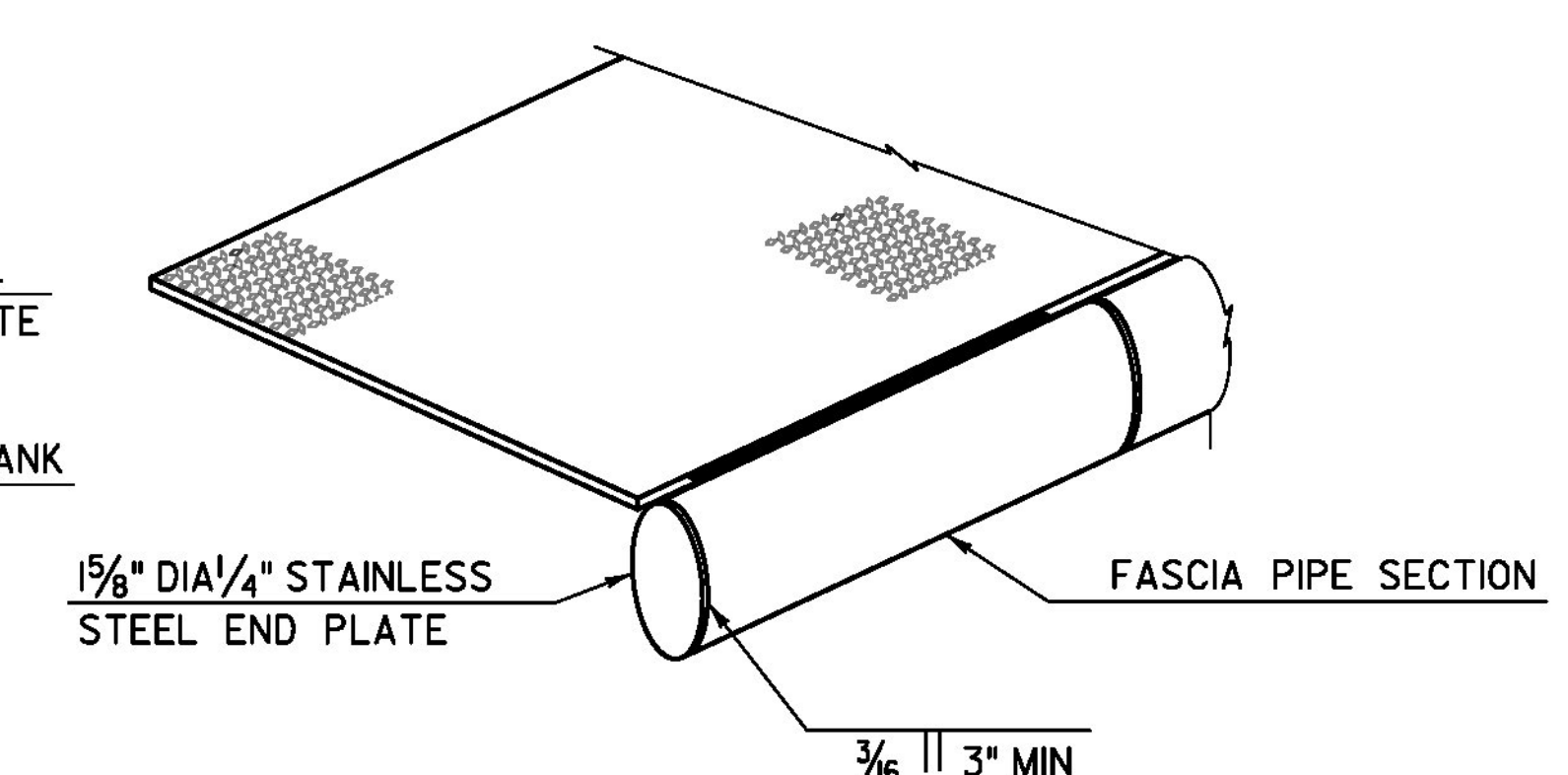
FLOAT - BEARING PLATE
SCALE: 3/4" = 1'-0"
(NW AND SE CORNERS OF FLOAT SHOWN)
(ASSEMBLIES AT SW AND NE CORNERS OF
FLOAT MIRRORED ABOUT CL ROADWAY)



ABUTMENT / RAMP - SIDEWALK SECTION
SCALE: 1/2" = 1'-0"



RAMP / FLOAT - SIDEWALK SECTION
SCALE: 1/2" = 1'-0"



END PLATE
SCALE: 3/4" = 1'-0"

NOTES:

1. WELDS ON TOP OF HINGE ASSEMBLIES SHALL BE GROUND FLUSH.
2. STEEL PIPES SHALL HAVE A MINIMUM 1/8" INNER DIAMETER.
3. ALL COSTS ASSOCIATED WITH SLIDING PLATE ASSEMBLY WILL BE INCLUDED IN THE UNIT PRICE BID FOR CONTRACT ITEM 900.640 SPECIAL PROVISION (EXPANSION DEVICE, HINGED SLIDING PLATE ASSEMBLY).
4. NON-SKID PLATES SHALL HAVE A DIAMOND (TREAD/CHECKERED) PATTERN ON THE TRAVEL SURFACE. NON-SKID PATTERN SHALL BE IN GENERAL CONFORMANCE WITH THE GEOMETRIC REQUIREMENTS OF ASTM A 793.

REVISION	DESCRIPTION	DATE
REVISION #1	HINGE PLATE CHANGE	2/4/2014

PROJECT NAME: **BROOKFIELD**
PROJECT NUMBER: **BRF FLBR(2)**

TYLINTERNATIONAL

FILE NAME: z12e134bdrstelconn.dgn PLOT DATE: 2/5/2014
PROJECT LEADER: J. OLUND DRAWN BY: S. MORGAN
DESIGNED BY: S. KELLER CHECKED BY: D. MYERS
HINGED SLIDING PLATE ASSEMBLY - SIDEWALK SHEET 52 OF 70