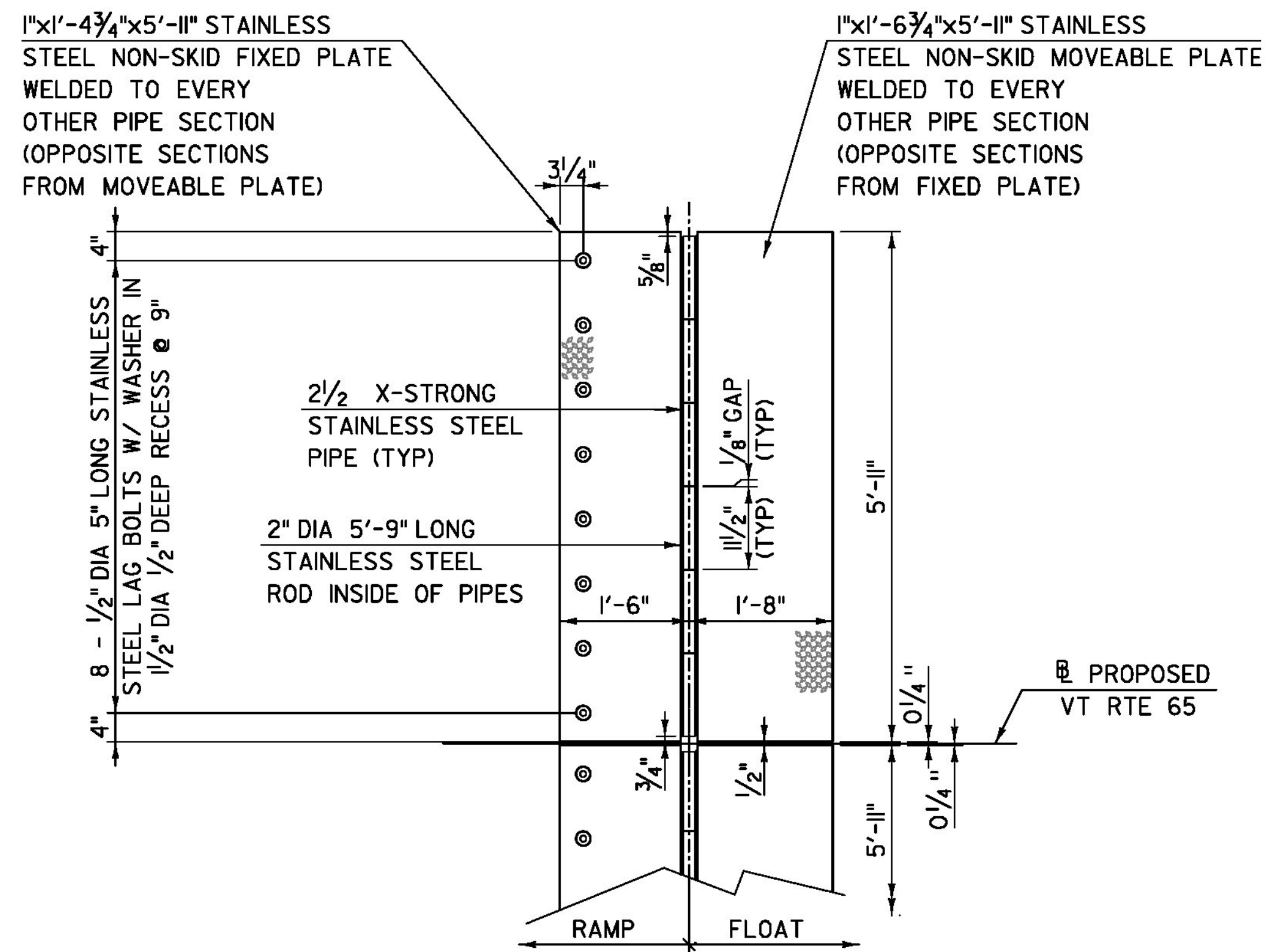


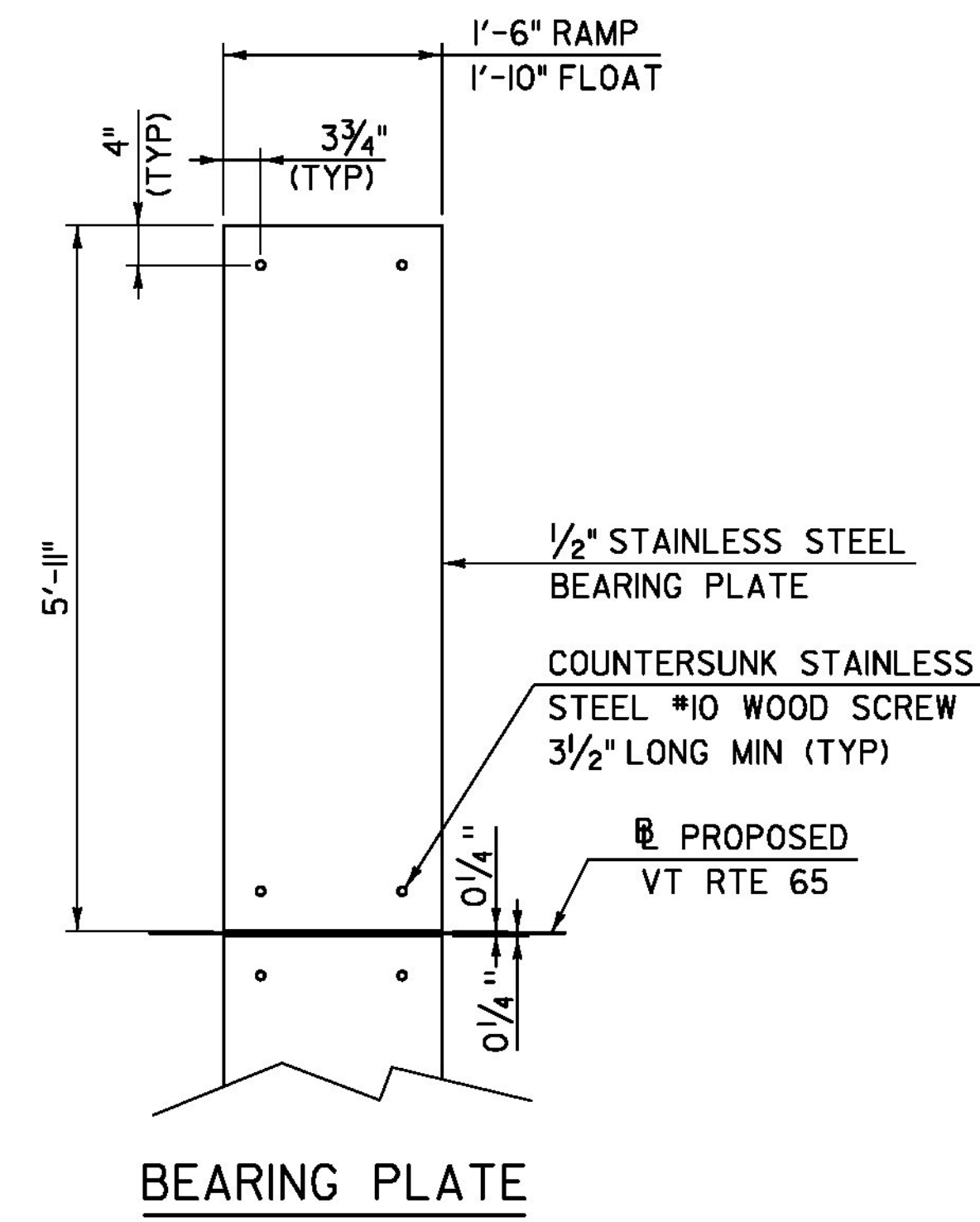
ABUTMENT / RAMP - ROADWAY ASSEMBLY

SCALE: 3/4" = 1'-0"



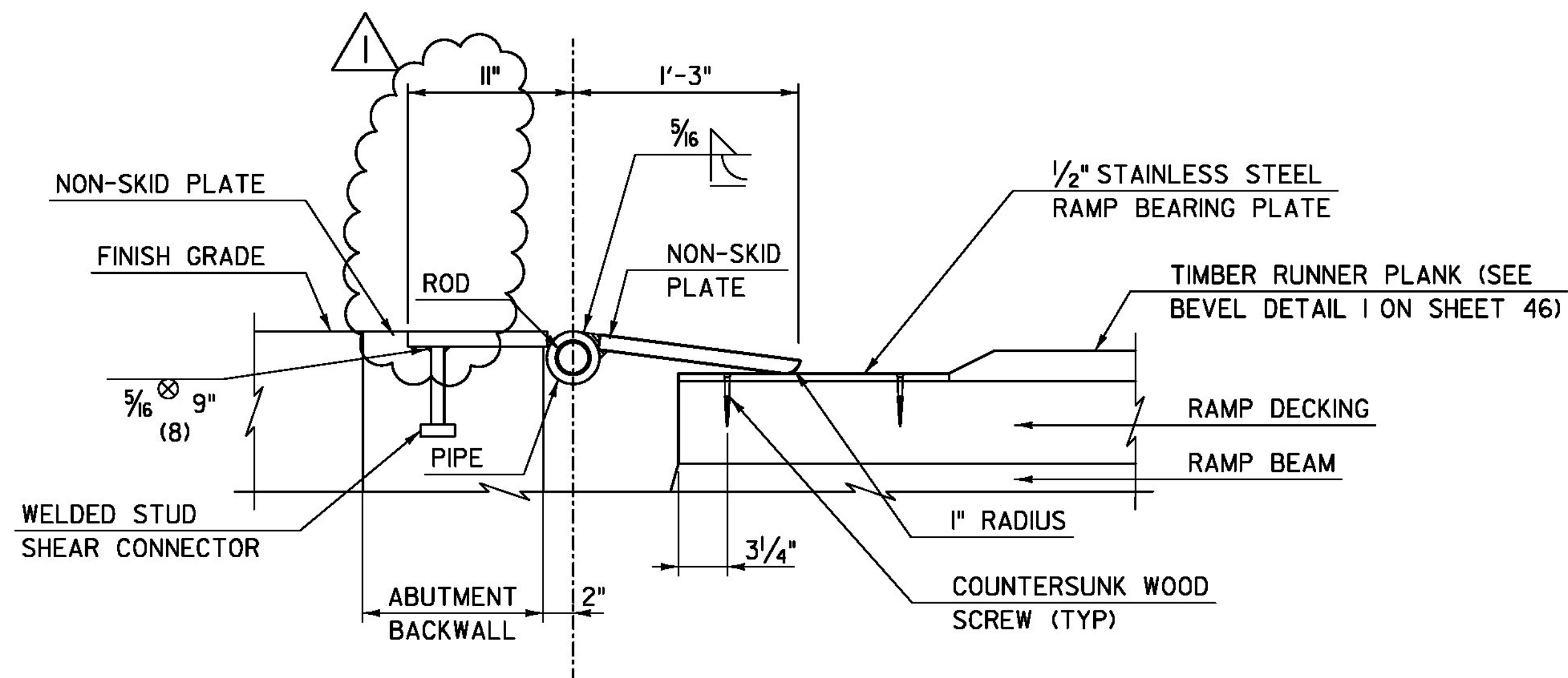
RAMP / FLOAT - ROADWAY ASSEMBLY

SCALE: 3/4" = 1'-0"



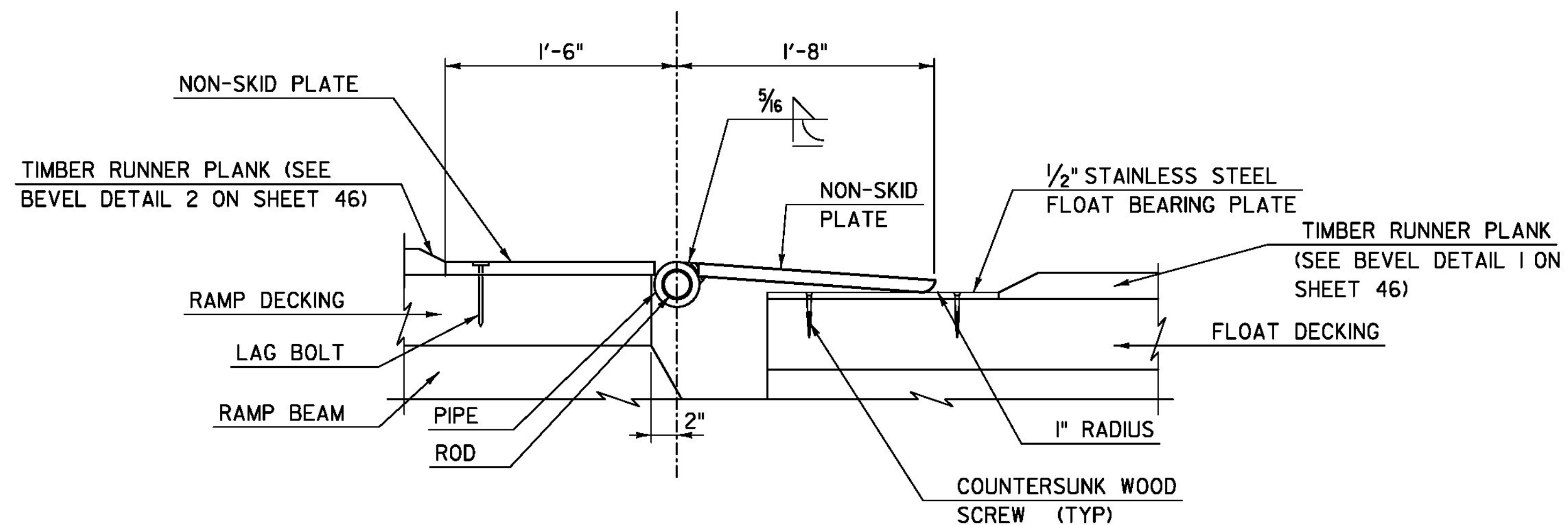
BEARING PLATE

SCALE: 3/4" = 1'-0"



ABUTMENT / RAMP - ROADWAY SECTION

SCALE: 1/2" = 1'-0"



RAMP / FLOAT - ROADWAY SECTION

SCALE: 1/2" = 1'-0"

NOTE:

- STEEL PIPES SHALL HAVE A MINIMUM 2/8" INNER DIAMETER.
- ALL COSTS ASSOCIATED WITH SLIDING PLATE ASSEMBLY WILL BE INCLUDED IN THE UNIT PRICE BID FOR CONTRACT ITEM 900.640 SPECIAL PROVISION (EXPANSION DEVICE, HINGED SLIDING PLATE ASSEMBLY).
- NON-SKID PLATES SHALL HAVE A DIAMOND (TREAD/CHECKERED) PATTERN ON THE TRAVEL SURFACE. NON-SKID PATTERN SHALL BE IN GENERAL CONFORMANCE WITH THE GEOMETRIC REQUIREMENTS OF ASTM A 793.

REVISION	DESCRIPTION	DATE
REVISION #1	HINGE PLATE CHANGE	2/4/2014

PROJECT NAME: BROOKFIELD
PROJECT NUMBER: BRF FLBR(2)

TYLIN INTERNATIONAL

FILE NAME: z12el34bdrstelconn2.dgn PLOT DATE: 2/5/2014
PROJECT LEADER: J. OLUND DRAWN BY: S. MORGAN
DESIGNED BY: S. KELLER CHECKED BY: D. MYERS
HINGED SLIDING PLATE ASSEMBLY - ROADWAY SHEET 51 OF 70