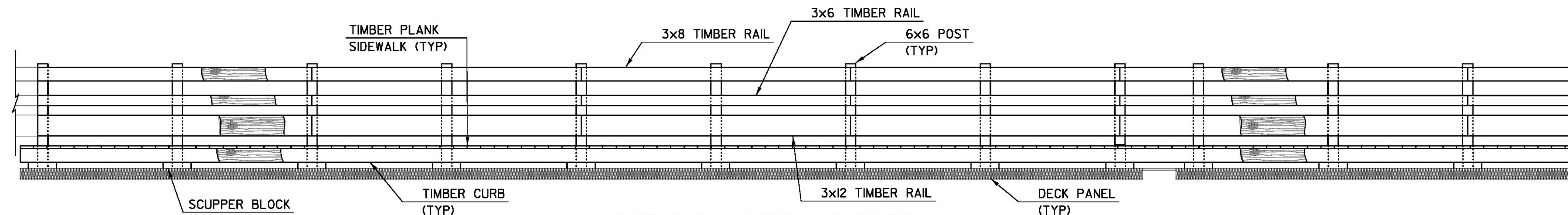
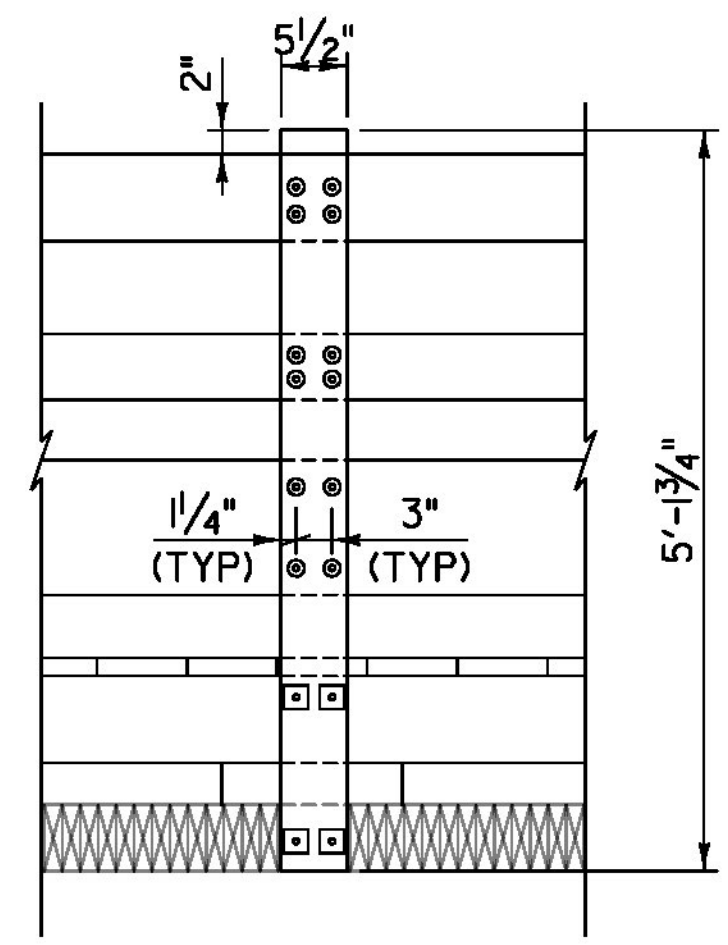


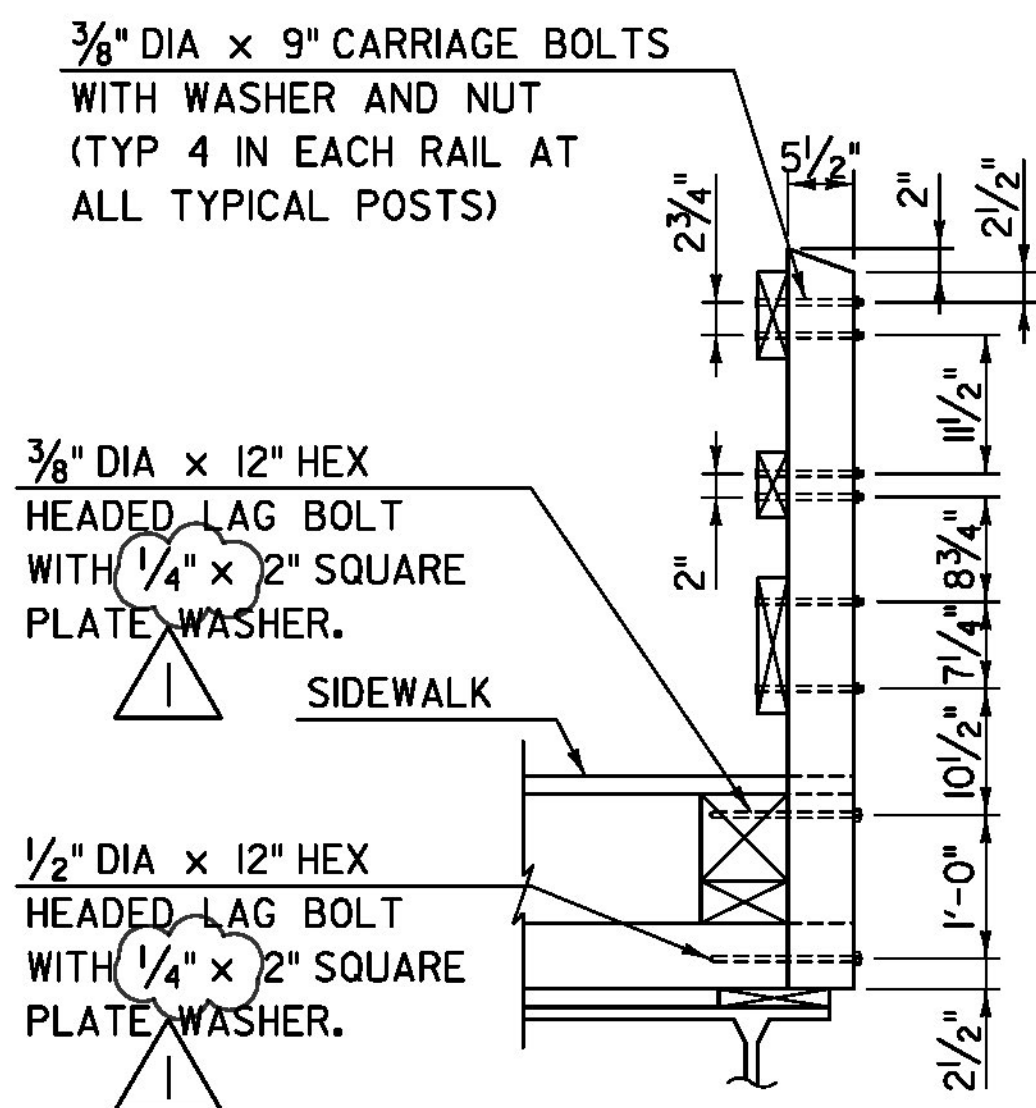
RAFT RAIL LAYOUT - PLAN
 SCALE: 3/8" = 1'-0"
 (BOTH SIDES SIMILAR, SIDEWALK PLANKS AND CURB BOARDS NOT SHOWN FOR CLARITY)



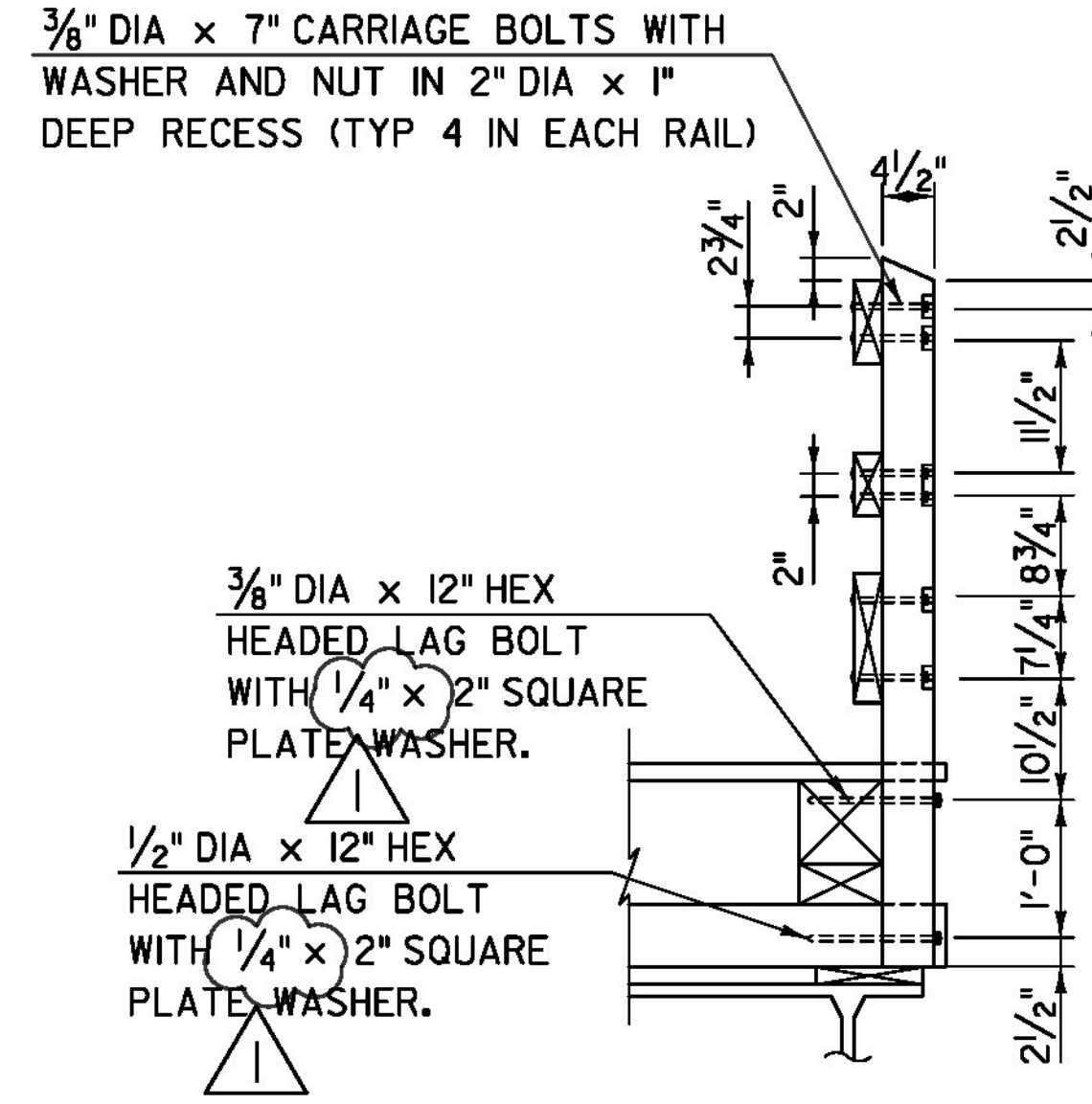
RAFT RAIL LAYOUT - ELEVATION
 SCALE: 3/8" = 1'-0"
 (BOTH SIDES SIMILAR)



RAIL POST - BACK ELEVATION
 SCALE: 3/4" = 1'-0"



TYPICAL RAIL POST - RAFT SECTION
 SCALE: 3/4" = 1'-0"



5x6 END POST - RAFT SECTION
 SCALE: 3/4" = 1'-0"

NOTES:
 1. TIMBER RAILS SHALL BE ATTACHED TO A MINIMUM OF 3 POSTS.

REVISION	DESCRIPTION	DATE
REVISION #1	WASHER THICKNESS ADDED	2/4/2014

PROJECT NAME: BROOKFIELD
 PROJECT NUMBER: BRF FLBR(2)

TYLIN INTERNATIONAL

FILE NAME: z12e134bdrallayf.dgn PLOT DATE: 2/5/2014
 PROJECT LEADER: J. OLUND DRAWN BY: S. MORGAN
 DESIGNED BY: S. KELLER CHECKED BY: J. OLUND
 FLOATING SPAN RAILING LAYOUT & DETAILS SHEET 50 OF 70