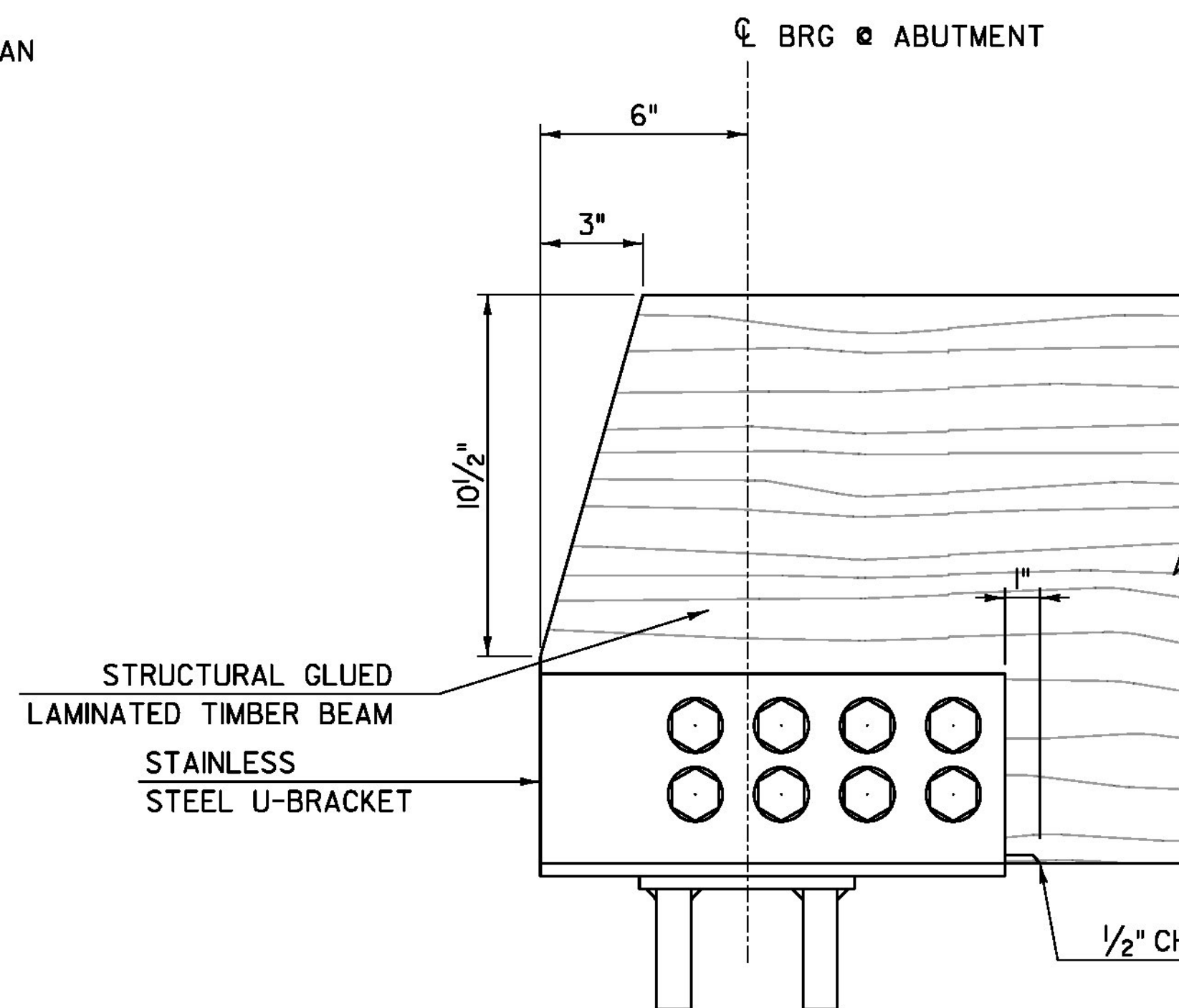


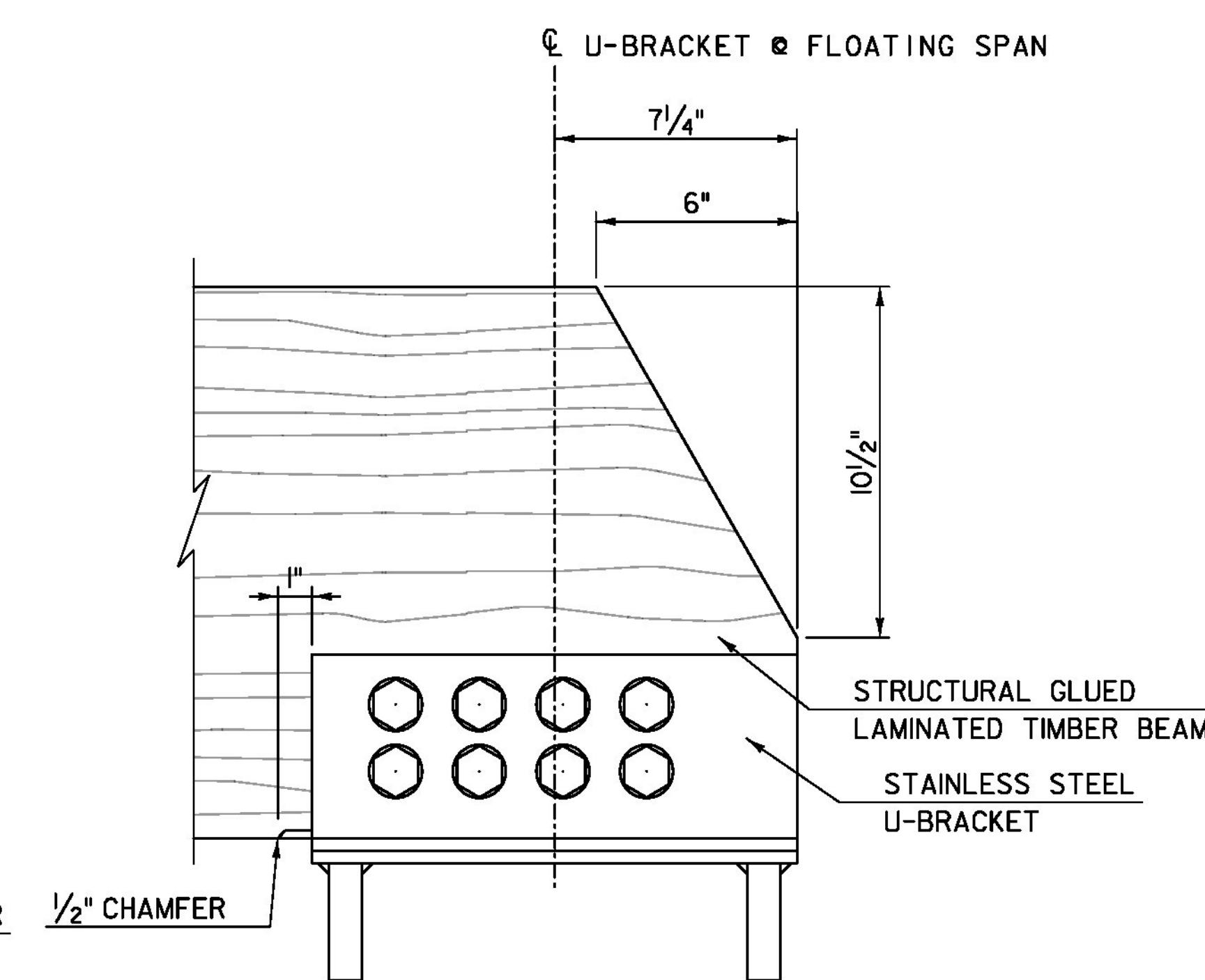
**RAMP FRAMING PLAN**

SCALE: 1/4" = 1'-0"  
(WESTERN RAMP SHOWN, EASTERN RAMP OPPOSITE HAND)



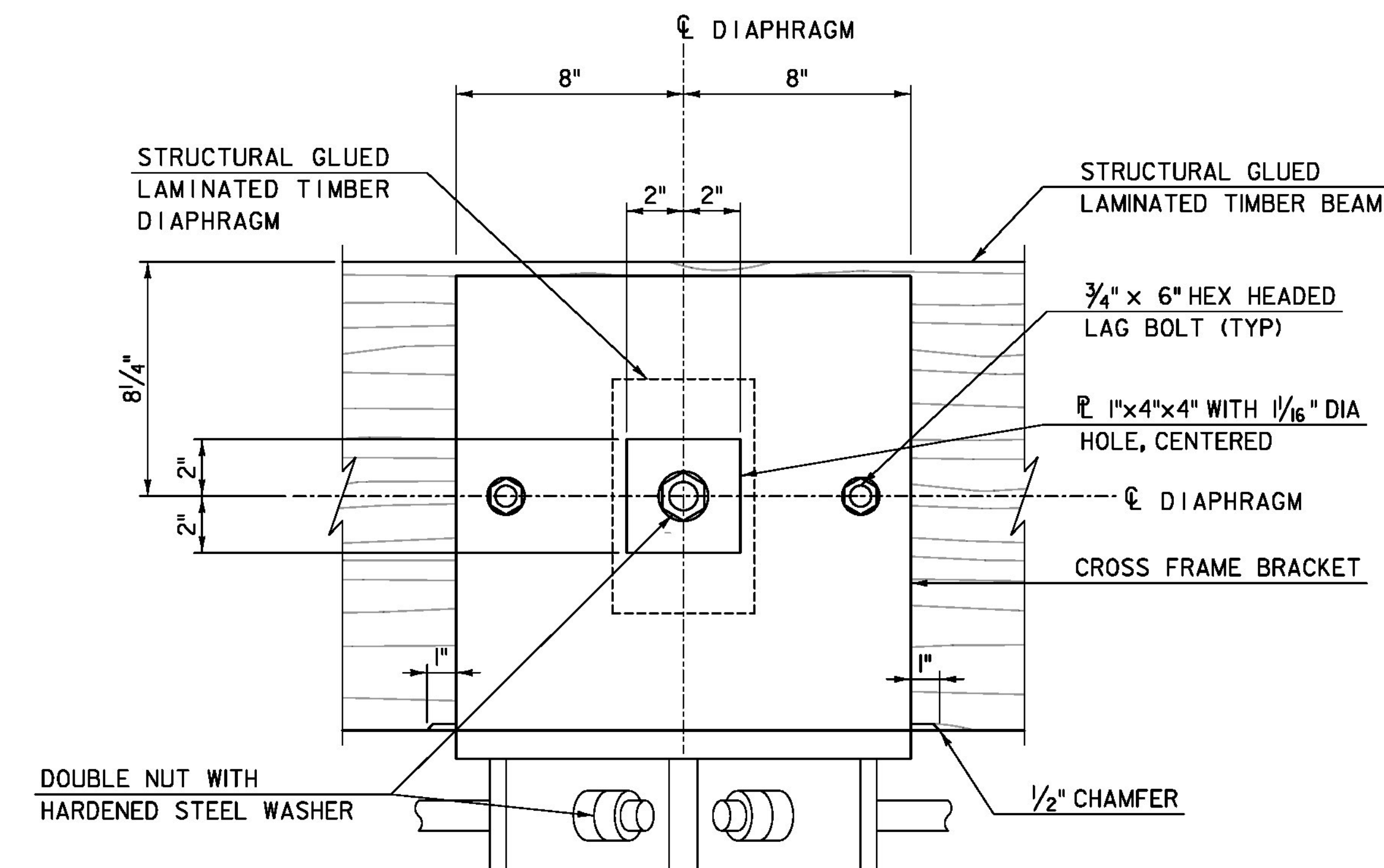
**BEAM END DETAIL AT ABUTMENT**

SCALE: 3" = 1'-0"



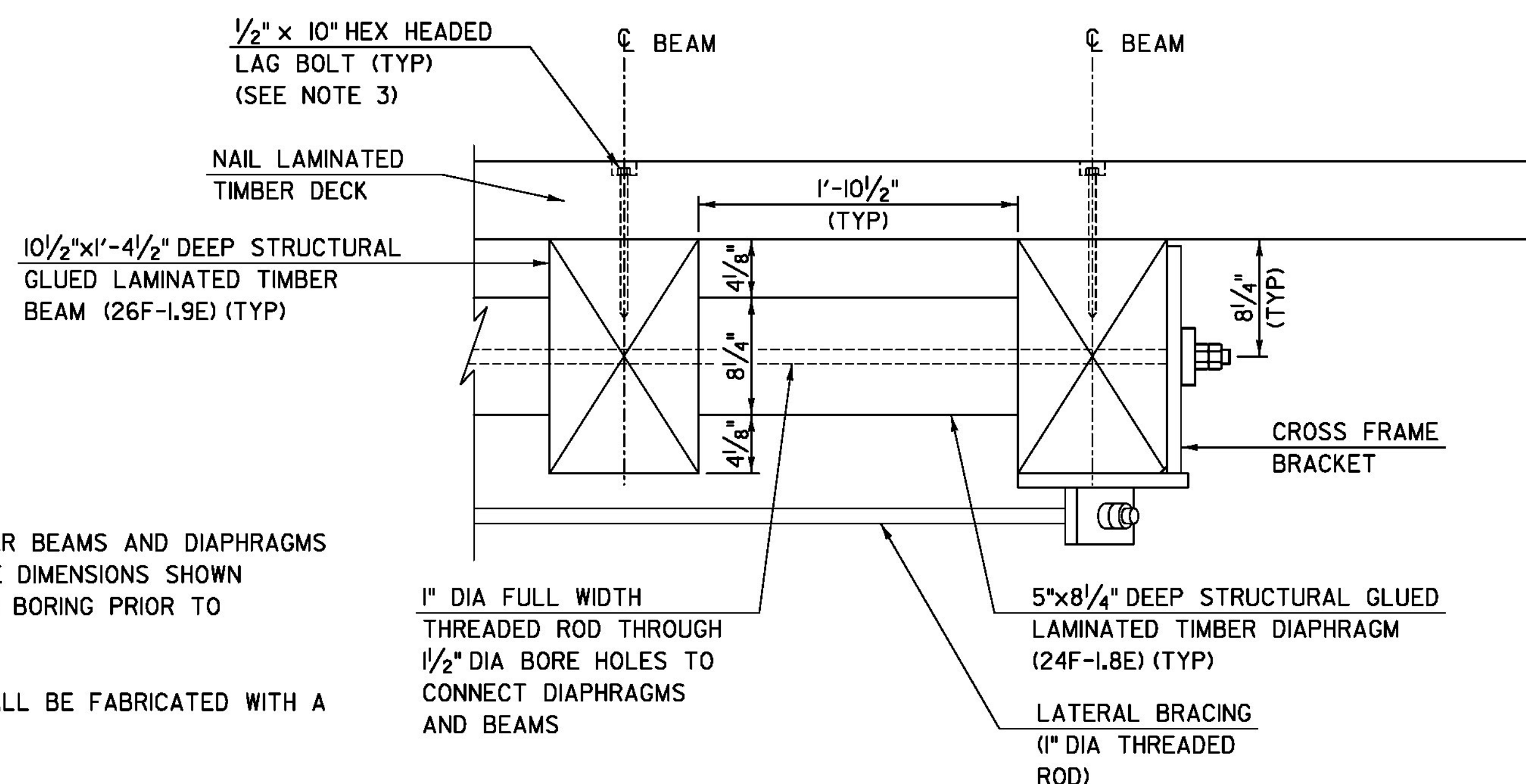
**BEAM END DETAIL AT FLOATING SPAN**

SCALE: 3" = 1'-0"



**THREADED ROD ANCHOR DETAIL**

SCALE: 3" = 1'-0"  
(MIDDLE DIAPHRAGM SHOWN, END DIAPHRAGMS SIMILAR)



**DIAPHRAGM DETAIL**

SCALE: 1/2" = 1'-0"

**NOTES:**

1. STRUCTURAL GLUED LAMINATED TIMBER BEAMS AND DIAPHRAGMS SHALL BE FULLY FABRICATED TO THE DIMENSIONS SHOWN INCLUDING ALL DRILLING, CUTTING, AND BORING PRIOR TO PRESSURE TREATING.
2. GLUED LAMINATED TIMBER BEAMS SHALL BE FABRICATED WITH A ONE INCH VERTICAL CAMBER AT MIDSPAN.
3. SEE SHEET 44 FOR DECK PANEL AND DECK ATTACHMENT LAYOUT AND DETAILS.
4. SEE SHEET 53 FOR BEARING ASSEMBLY AND U-BRACKET CONNECTION DETAILS.

PROJECT NAME: BROOKFIELD  
PROJECT NUMBER: BRP FLBR(2)

**TYL** INTERNATIONAL

FILE NAME: z12e134bdramp\_frm.dgn  
PROJECT LEADER: J. OLUND  
DESIGNED BY: T. POULIN  
RAMP FRAMING PLAN

PLOT DATE: 12/3/2013  
DRAWN BY: S. MORGAN  
CHECKED BY: J. OLUND  
SHEET 41 OF 70