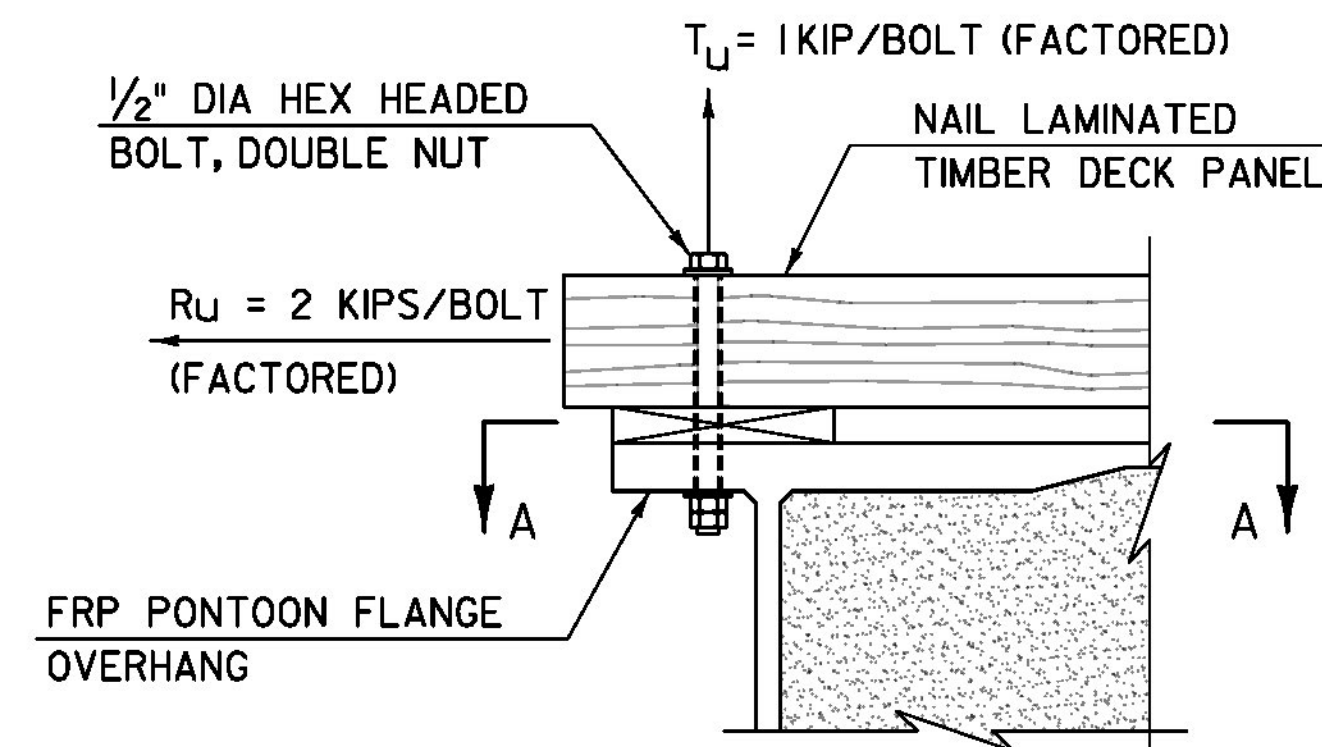


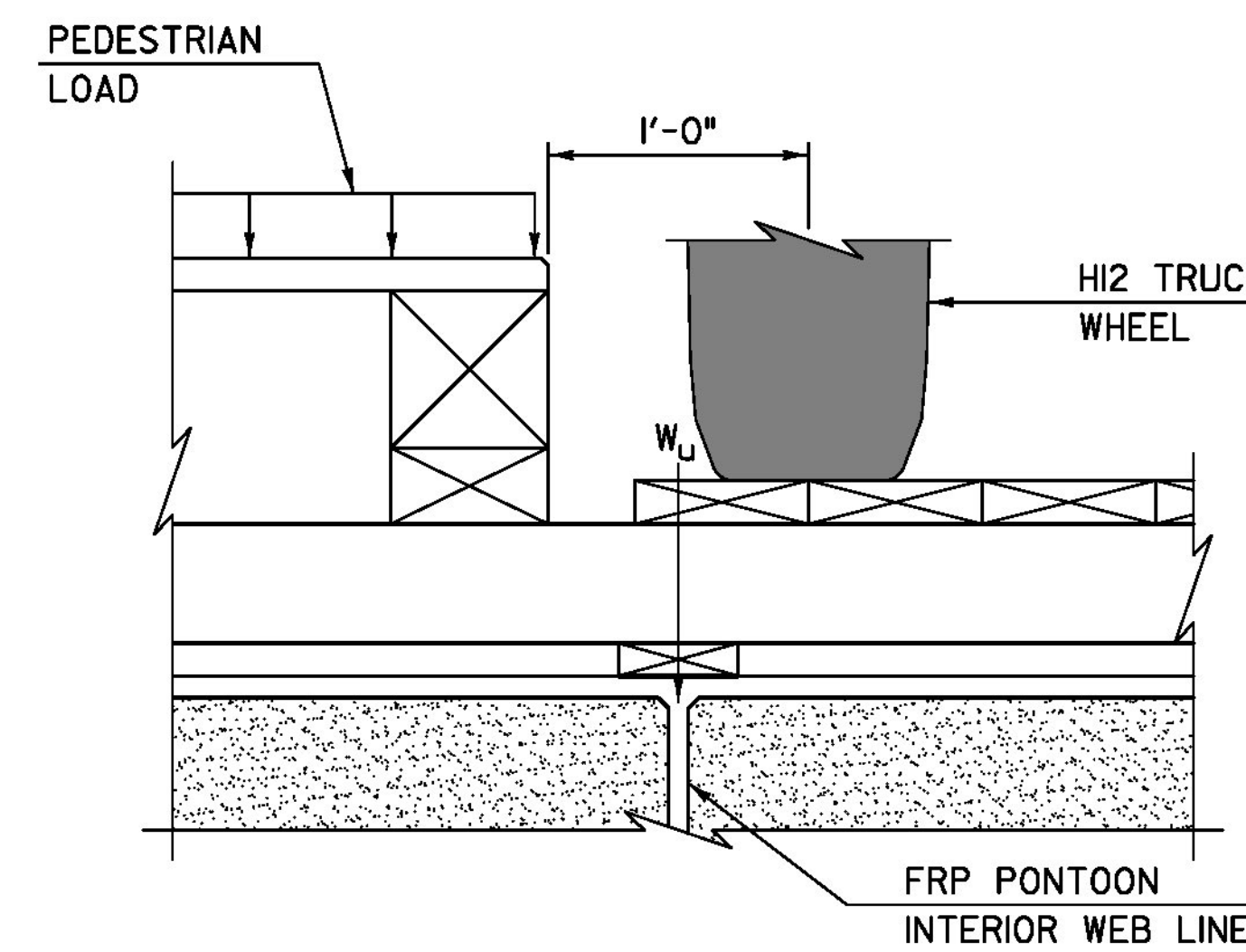
**ICE PRESSURE LOADING DIAGRAM**  
NOT TO SCALE

**ICE LOAD NOTES:**

1. ICE LOADS SHALL BE TAKEN TO ACT EQUALLY TO BOTH SIDES OF THE FRP RAFTS SIMULTANEOUSLY. ICE FLOWS AND HANGING ICE DAMS NEED NOT BE CONSIDERED IN THE DESIGN OF THE FRP PONTOONS.
2. DESIGN FOR ICE PRESSURES NOTED ON THIS SHEET SHALL BE CONSIDERED SIMULTANEOUSLY WITH GLOBAL 'EXTREME EVENT II' GLOBAL DESIGN FORCES NOTED ON SHEET 37.

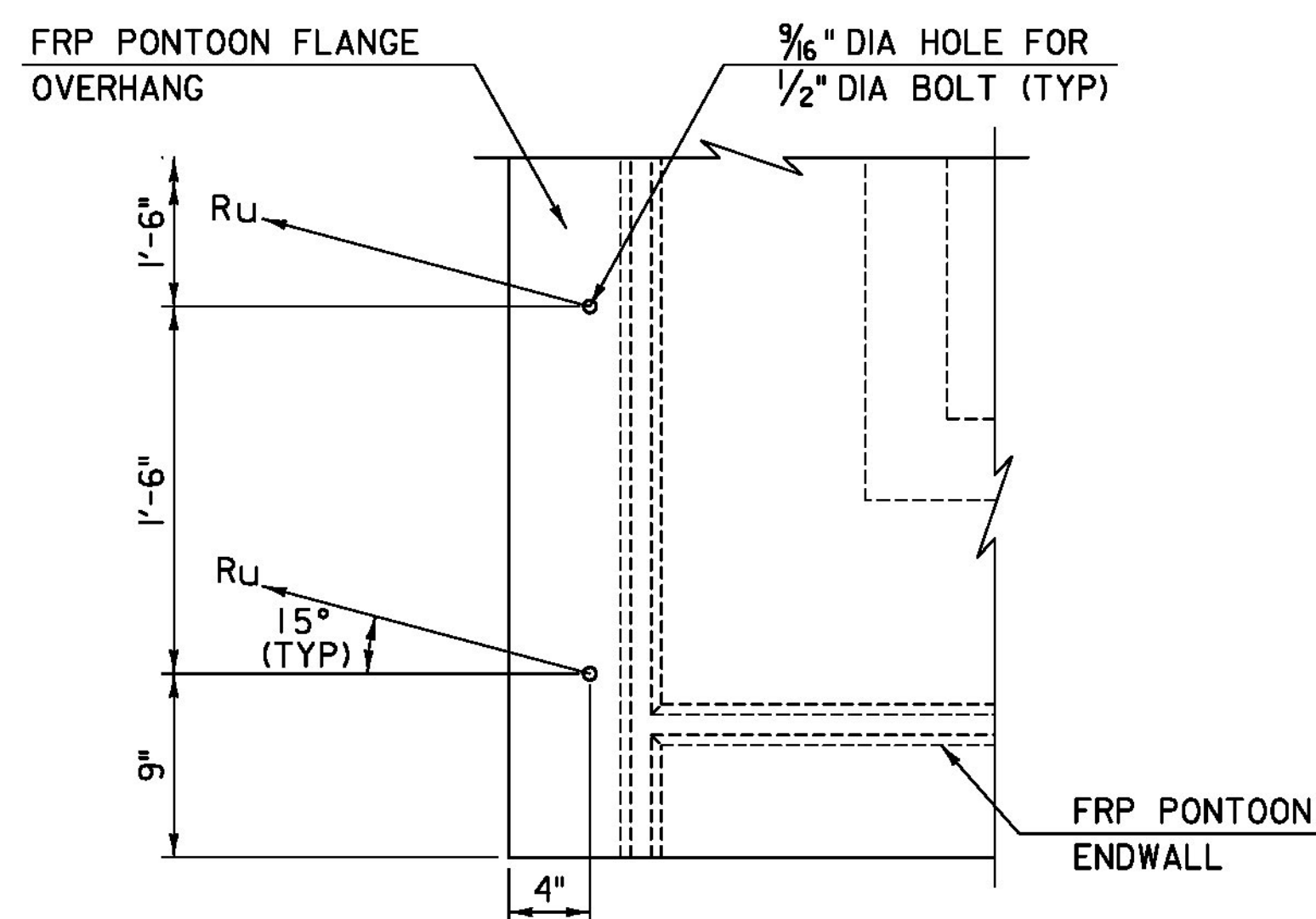


**DECK OVERHANG CONNECTION LOADING DIAGRAM - SECTION**  
NOT TO SCALE  
(NOT ALL BRIDGE COMPONENTS SHOWN FOR CLARITY)



$W_u = 15.5$  KIP DISTRIBUTED OVER A 24" LONGITUDINAL LENGTH, WHICH ACCOUNTS FOR THE FACTORED REACTION DUE TO PEDESTRIAN LOAD, HI2 TRUCK WHEEL LOAD, AND TIMBER DEAD LOAD

**REACTION AT WEB LINE DIAGRAM**  
NOT TO SCALE



**VIEW A-A - DECK OVERHANG CONNECTION LOADING DIAGRAM**  
NOT TO SCALE

**TYLIN** INTERNATIONAL

PROJECT NAME: BROOKFIELD  
PROJECT NUMBER: BRFLBR(2)

FILE NAME: z12e134bdr-frpdlagr.dgn  
PROJECT LEADER: J. OLUND  
DESIGNED BY: J. OLUND  
FRP RAFT LOADING DIAGRAMS I

PLOT DATE: 12/3/2013  
DRAWN BY: S. MORGAN  
CHECKED BY: C. TAYLOR  
SHEET 35 OF 70