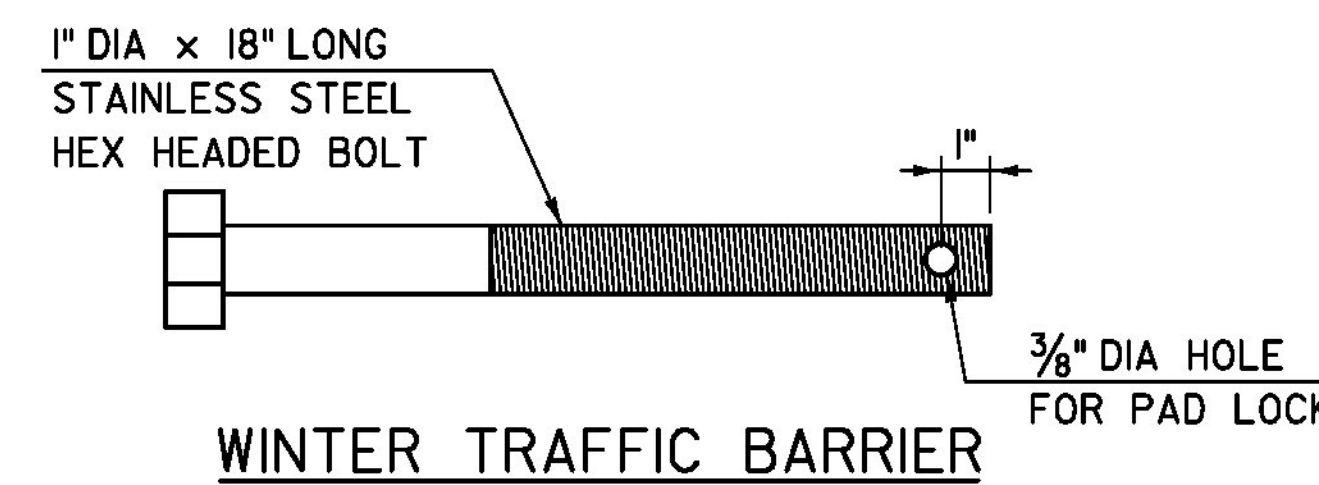
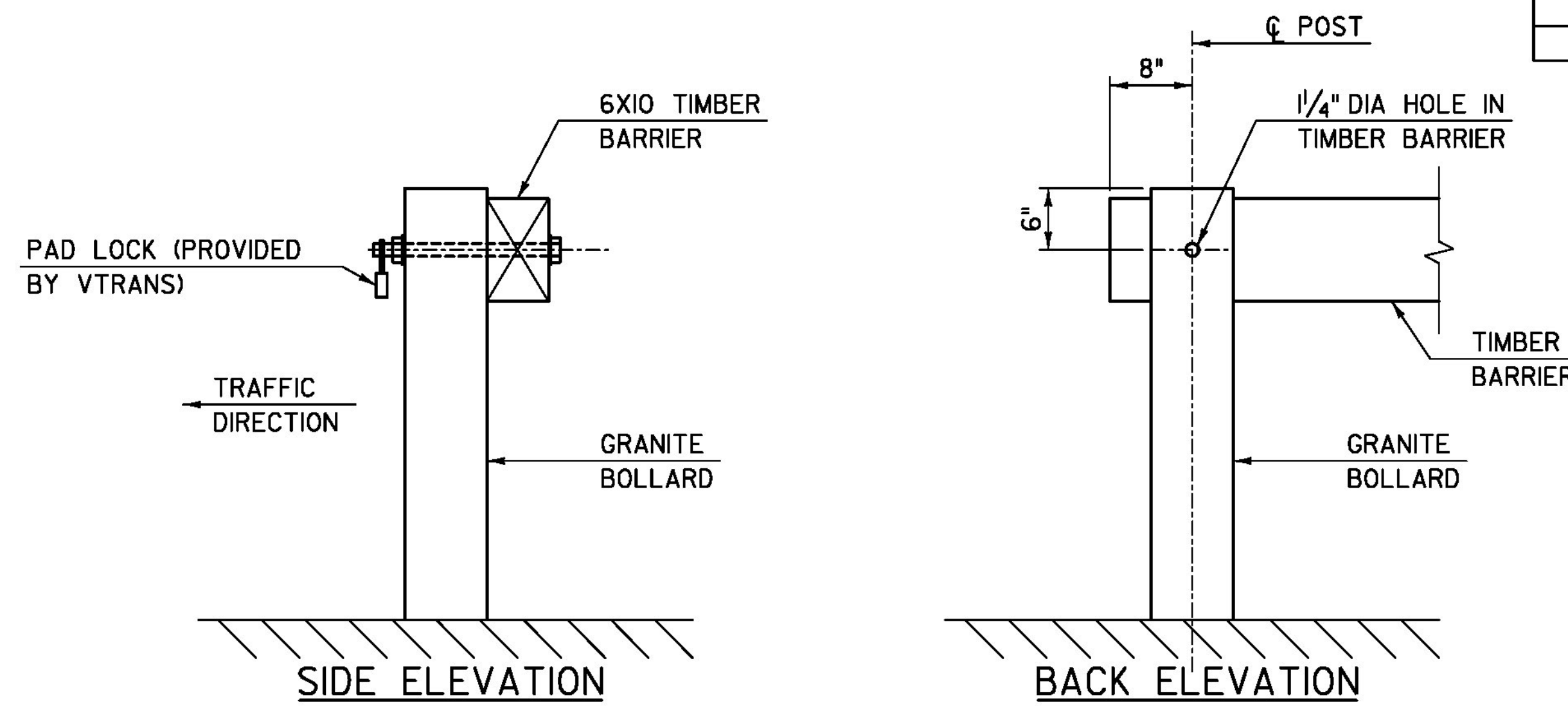


POST LOCATION		
POST NO.	STATION	OFFSET
1	STA. 10+07.68	15.50 RT
2	STA. 10+17.65	14.73 RT
3	STA. 10+27.62	13.96 RT
4	STA. 10+37.56	13.21 RT
5	STA. 10+47.53	13.20 RT
6	STA. 10+57.53	13.20 RT
7	STA. 10+67.53	13.20 RT
8	STA. 10+77.53	13.20 RT
9	STA. 10+87.53	13.20 RT
10	STA. 10+97.56	13.20 RT
11	STA. 11+07.53	12.50 RT
12	STA. 11+10.50	12.50 RT
13	STA. 10+60.71	15.58 LT
14	STA. 10+67.68	15.00 LT
15	STA. 10+77.65	14.15 LT
16	STA. 10+87.61	13.31 LT
17	STA. 10+97.54	12.50 LT
18	STA. 11+07.53	12.48 LT
19	STA. 11+10.50	12.48 LT
20	STA. 14+33.50	12.48 RT
21	STA. 14+36.50	12.48 RT
22	STA. 14+46.44	12.51 RT
23	STA. 14+56.29	13.80 RT
24	STA. 14+63.23	14.73 RT
25	STA. 14+33.46	12.48 LT
26	STA. 14+36.44	12.51 LT
27	STA. 14+46.20	13.91 LT
28	STA. 14+55.71	16.75 LT

TIMBER GUARDRAIL NOTES

- WOOD POSTS, OFFSET BLOCKS AND TIMBER RAIL SHALL CONFORM TO SUBSECTION 728.01.
- STEEL SPLICE PLATES SHALL BE GALVANIZED AFTER FABRICATION IN ACCORDANCE WITH THE REQUIREMENTS OF AASHTO M11M / M11 AND CONFORM TO THE REQUIREMENTS OF AASHTO M270M / M270, GRADE 36.
- MISCELLANEOUS HARDWARE AND FITTINGS SUCH AS BOLTS, NUTS, AND WASHERS SHALL CONFORM TO THE DIMENSIONS SHOWN.
- BOLTS, NUTS, AND WASHERS SHALL CONFORM TO THE REQUIREMENTS OF SUBSECTION 728.03(c) (1)-(2).
- LAG SCREWS SHALL BE OF LOW TO MEDIUM CARBON STEEL AND SHALL BE OF GOOD COMMERCIAL QUALITY.
- DELINEATORS SHALL BE A 3 INCH BY 1.5 INCH RETROREFLECTIVE ALUMINUM STRIP ATTACHED WITH TWO 4D GALVANIZED NAILS. DELINEATORS SHALL BE PLACED APPROXIMATELY 10 FEET APART, CENTERED VERTICALLY ALONG THE FACE OF THE TIMBER RAIL, AND CLEARLY VISIBLE TO APPROACHING TRAFFIC. RETROREFLECTIVE MATERIAL SHALL MEET THE REQUIREMENTS OF SUBSECTION 751.03 AND SHALL BE OF ENCAPSULATED LENS SILVER. PAYMENT SHALL BE INCIDENTAL TO ITEM 621.18.
- STEEL-BACKED TIMBER GUARDRAIL LAYOUT DIMENSIONS ARE PROVIDED AT THE FRONT SURFACE OF THE ROUGH SAWN TIMBER RAIL AT THE CENTERLINE OF THE POST.
- POST LAYOUT LOCATIONS ARE PROVIDED AT THE FACE OF POST AT THE CENTERLINE OF THE POST.
- REFER TO TIMBER GUARDRAIL DETAILS SHEETS FOR STEEL-BACKED TIMBER GUARDRAIL DETAILS.
- THE FINAL GUARDRAIL LOCATION SHALL BE FIELD VERIFIED BY THE CONTRACTOR TO THE SATISFACTION OF THE ENGINEER PRIOR TO CONSTRUCTION. ALL COST ASSOCIATED WITH VERIFYING THE GUARDRAIL LAYOUT SHALL BE INCLUDED IN ITEM 621.18.
- ALL COSTS ASSOCIATED WITH THE CONCRETE ANCHORS FOR SHORT GUARDRAIL POSTS ON THE TIMBER GUARDRAIL DETAILS-2 SHEET (IF NEEDED), SHALL BE INCLUDED IN THE UNIT PRICE BID FOR ITEM 621.18, STEEL BACKED TIMBER GUARDRAIL.



WINTER TRAFFIC BARRIER

SCALE 1" = 10'-0"
10 0 10

TYLINTERNATIONAL

PROJECT NAME: BROOKFIELD
PROJECT NUMBER: BRF FLBR(2)

FILE NAME: z12e134bdr_grl.dgn
PROJECT LEADER: J. OLUND
DESIGNED BY: D. BURHANS
GUARDRAIL LAYOUT SHEET

PLOT DATE: 12/3/2013
DRAWN BY: P. MCCLURE
CHECKED BY: D. BRYANT
SHEET 17 OF 70