

GPS CONTROL POINTS

HVCTRL #1
 189 MILE 37
 NORTH = 559671.109
 EAST = 1610545.674
 ELEV. = 1454.003

GENERAL LOCATION, BROOKFIELD, VT.

TO REACH FROM THE VT ROUTE 66 BRIDGE OVER I-89 AT EXIT 4 IN RANDOLPH, GO NORTH ALONG I-89 NORTHBOUND FOR 6.4 MI (10.3 KM) TO THE SITE OF THE MARK ON THE LEFT, DIRECTLY OPPOSITE MILE MARKER 37.25. IT IS 5.7 MI (9.2 KM) SOUTH ALONG I-89 SOUTHBOUND FROM THE I-89 BRIDGES OVER VT ROUTE 64 AT EXIT 5 IN WILLIAMSTOWN.

THE MARK IS SET FLUSH WITH THE GROUND SURFACE IN THE TOP OF A MASSIVE ROCK OUTCROP.

IT IS 12.4 M (40.7 FT) WEST-NORTHWEST OF AND ABOUT 0.5 M (1.6 FT) HIGHER THAN THE I-89 NORTHBOUND WEST-NORTHWEST EDGE OF PAVEMENT, 35.4 M (116.1 FT) SOUTH OF A 20 CM (8 INCH) FIR WITH TRIANGULAR BLAZE, 15.9 M (52.2 FT) EAST-SOUTHEAST OF A 25 CM (10 INCH) CHERRY WITH TRIANGULAR BLAZE, 15.6 M (51.2 FT) NORTHEAST OF A 20 CM (8 INCH) BIRCH WITH TRIANGULAR BLAZE AND 2.7 M (8.9 FT) NORTHWEST OF A FIBERGLASS WITNESS POST.

HVCTRL #2
 189 MILE 37 AZ MK
 NORTH = 565959.350
 EAST = 1613008.773
 ELEV. = 1495.242

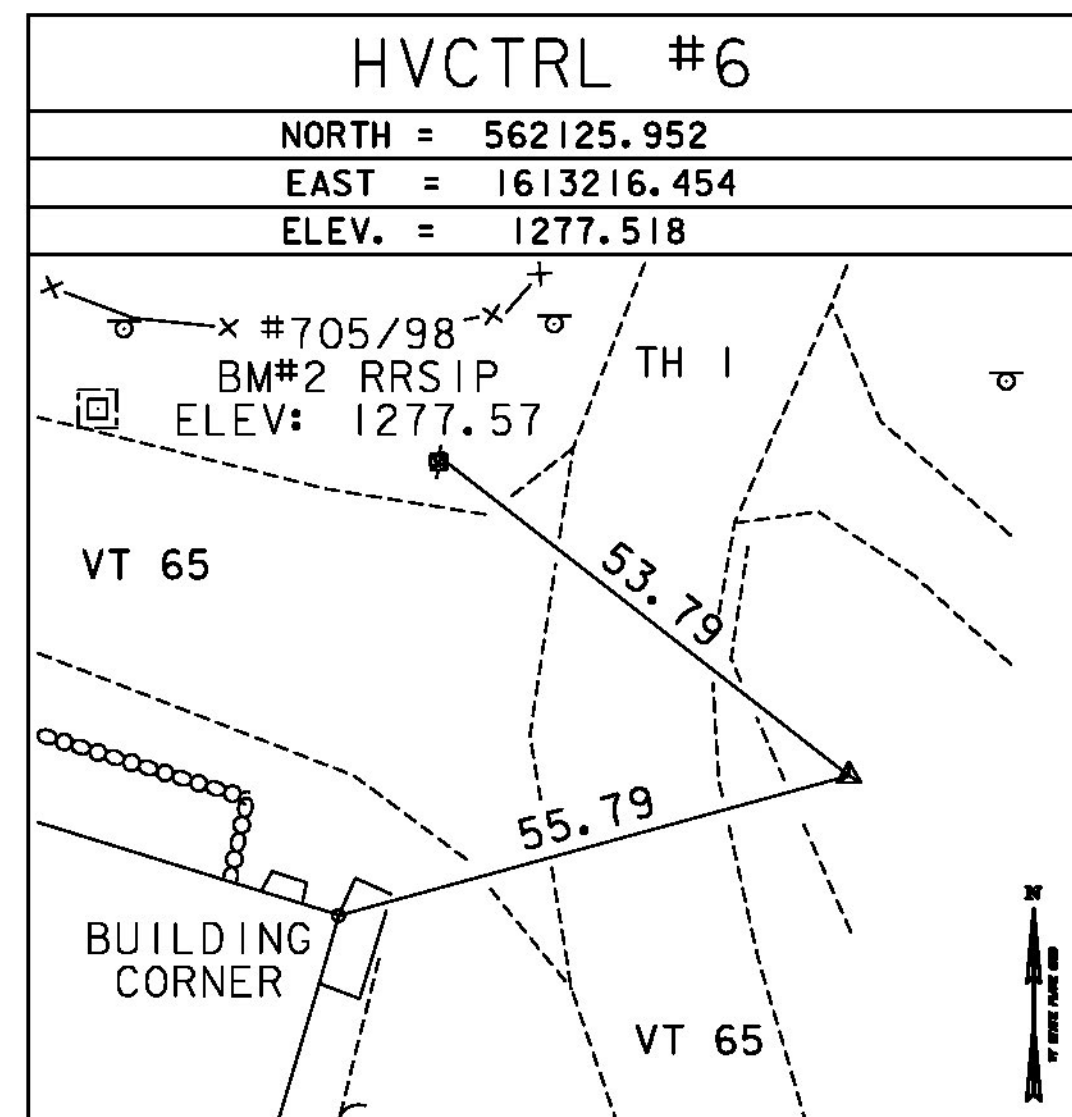
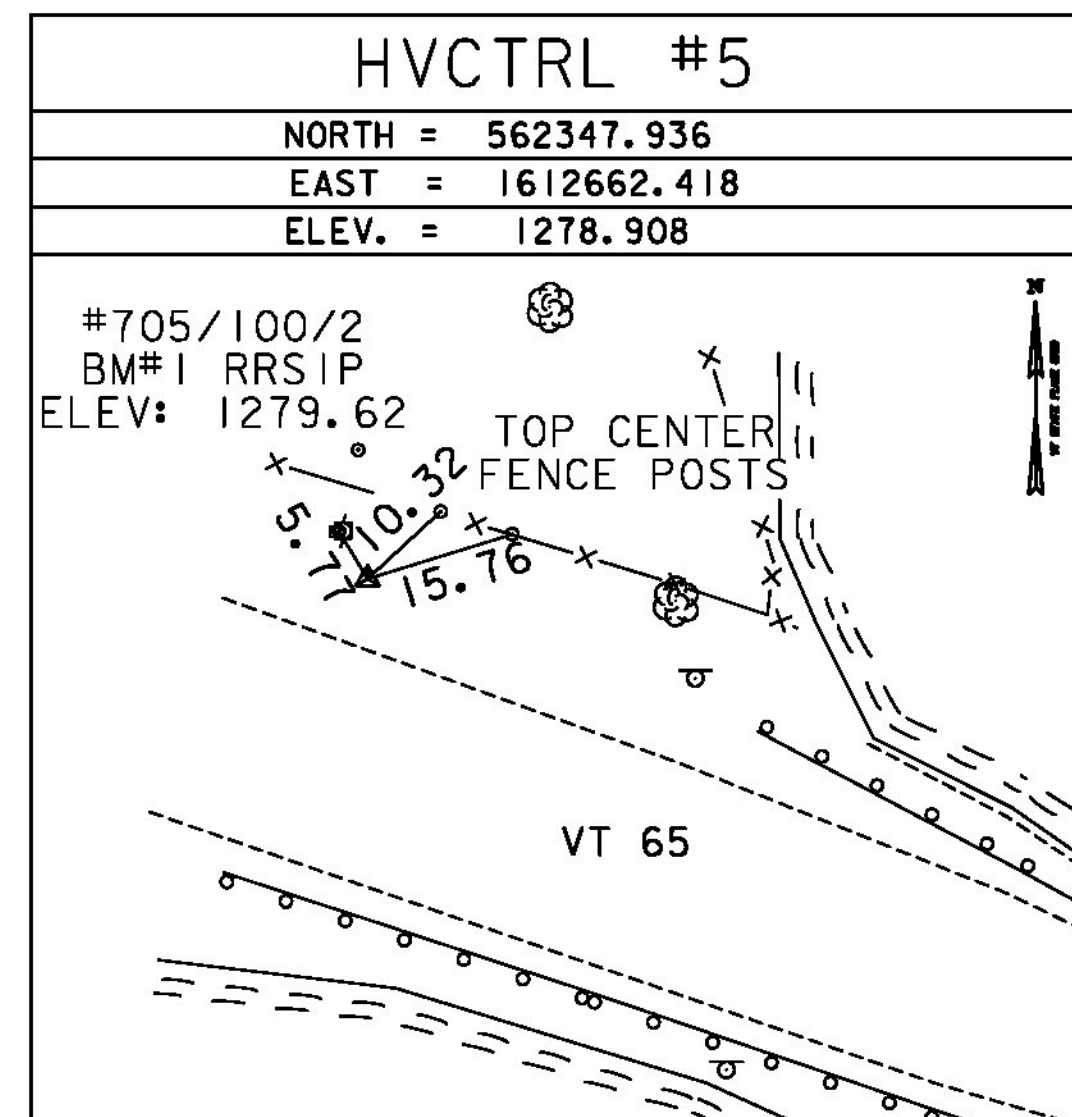
GENERAL LOCATION, BROOKFIELD, VT.

TO REACH FROM THE VT ROUTE 66 BRIDGE OVER I-89 AT EXIT 4 IN RANDOLPH, GO NORTH ALONG I-89 NORTHBOUND FOR 7.7 MI (12.4 KM) TO A PROMINENT QUARTZ ROCK OUTCROP ON THE RIGHT AND THE SITE OF THE MARK ON THE RIGHT, JUST SOUTH OF THE OUTCROP AND BETWEEN MILE MARKERS 38.50 AND 38.55. IT IS 4.5 MI (7.2 KM) SOUTH ALONG I-89 SOUTHBOUND FROM THE I-89 BRIDGES OVER VT ROUTE 64 AT EXIT 5 IN WILLIAMSTOWN.

THE MARK IS SET FLUSH WITH THE GROUND SURFACE IN THE TOP OF A 0.6 M (2.0 FT) X 0.5 M (1.6 FT) ROCK OUTCROP.

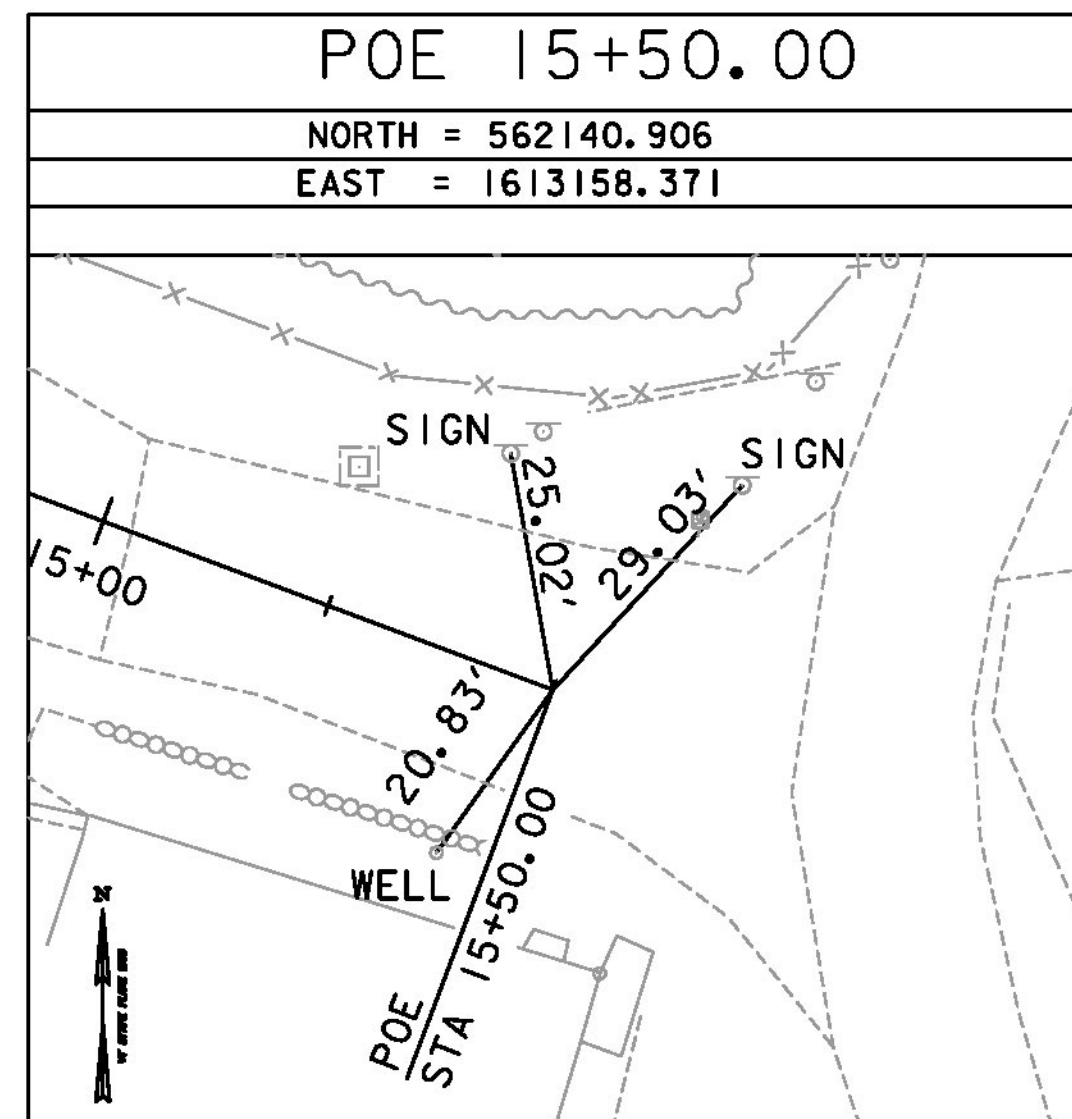
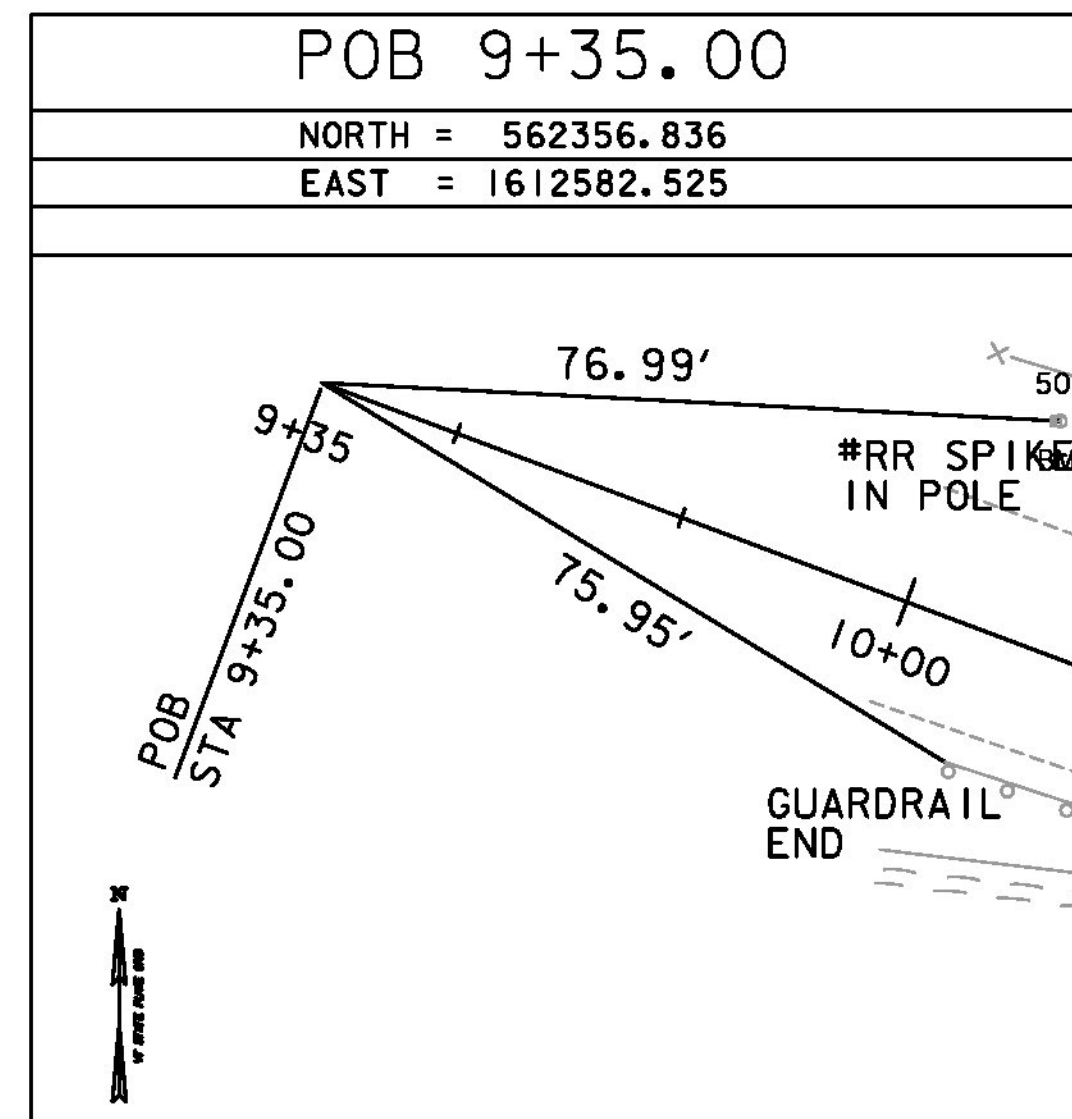
IT IS 12.1 M (39.7 FT) EAST OF AND ABOUT 0.3 M (1.0 FT) HIGHER THAN THE I-89 NORTHBOUND EAST EDGE OF PAVEMENT, 2.6 M (8.5 FT) SOUTH-SOUTHEAST OF THE SOUTH END OF THE QUARTZ OUTCROP, 33.4 M (109.6 FT) SOUTH OF MILE MARKER 38.55, 23.3 M (76.4 FT) SOUTH-SOUTHWEST OF A 40 CM (16 INCH) PINE WITH TRIANGULAR BLAZE, 11.7 M (38.4 FT) WEST-NORTHWEST OF THE INTERSTATE RIGHT-OF-WAY FENCE AND 0.9 M (3.0 FT) WEST-NORTHWEST OF A FIBERGLASS WITNESS POST.

TRAVERSE TIES



* MAIN TRAVERSE COMPLETED 1/5/2011 BY R. GILMAN P.C. & P. WINTERS & D. BREER

ALIGNMENT TIES



DATUM	
VERTICAL	NAVD 88
HORIZONTAL	NAD 83 (07)
ADJUSTMENT	COMPASS

TYLINT INTERNATIONAL

PROJECT NAME: BROOKFIELD
 PROJECT NUMBER: BRF FLBR(2)

FILE NAME: z12e134bdr_t1.dgn
 PROJECT LEADER: J. OLUND
 DESIGNED BY: D. BURHANS
 TIE SHEET

PLOT DATE: 12/3/2013
 DRAWN BY: B. CARTER
 CHECKED BY: K. DUCHARME
 SHEET 13 OF 70