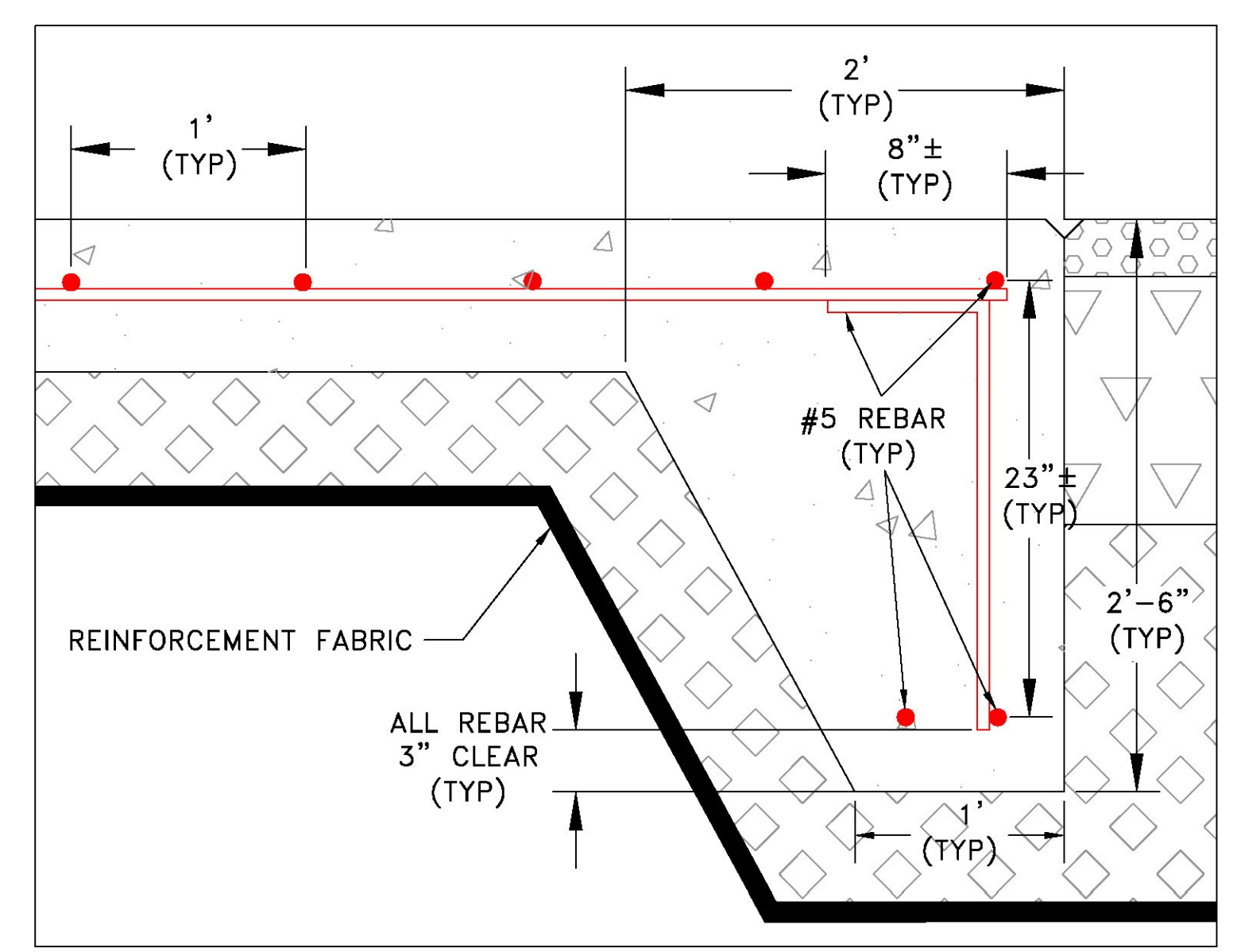


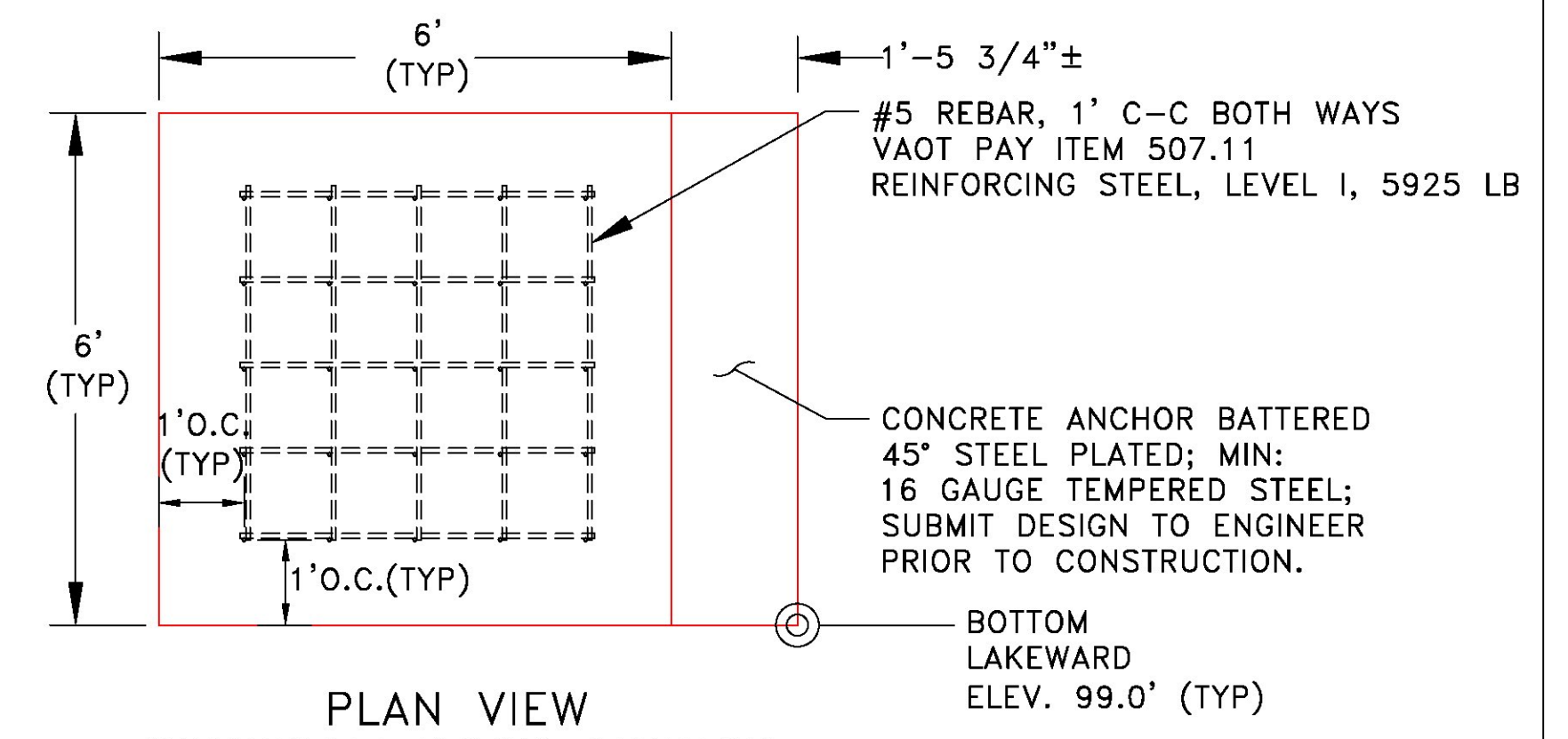
PLAN VIEW CONCRETE RAMP & GRADE BEAM

SCALE: 1"=8'-0"

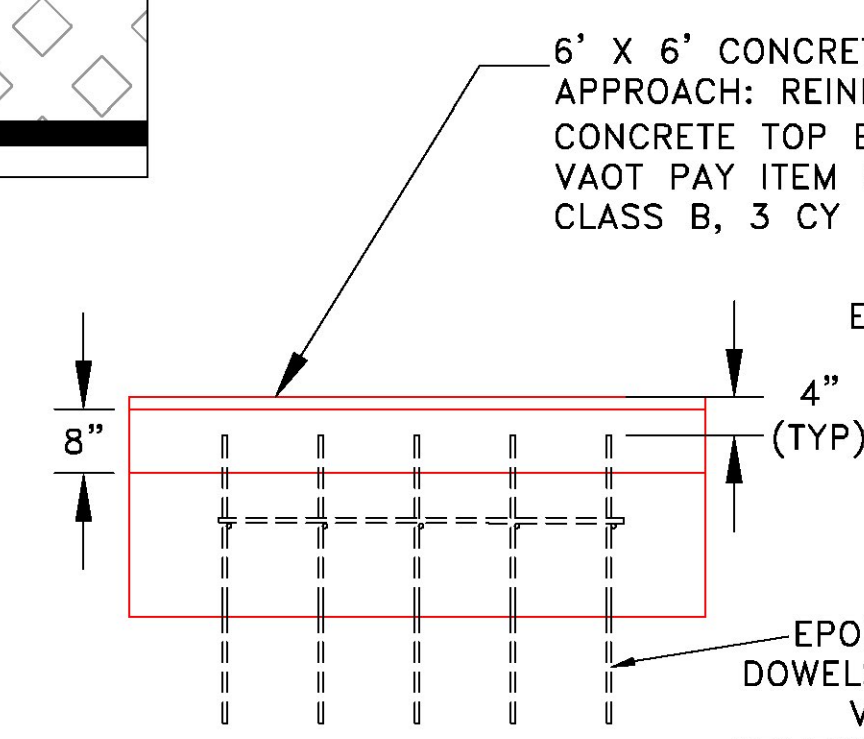


TYPICAL GRADE BEAM DETAIL

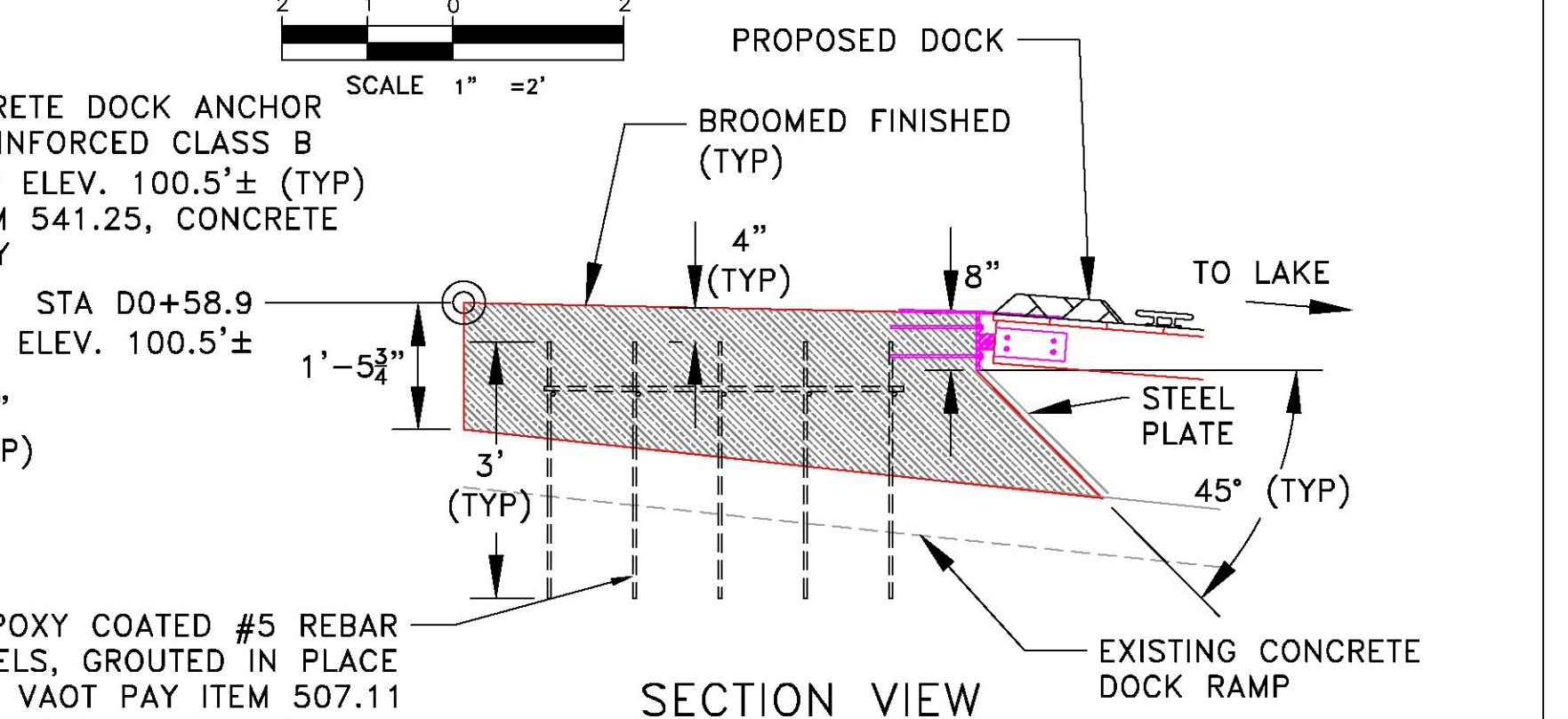
SCALE: N.T.S



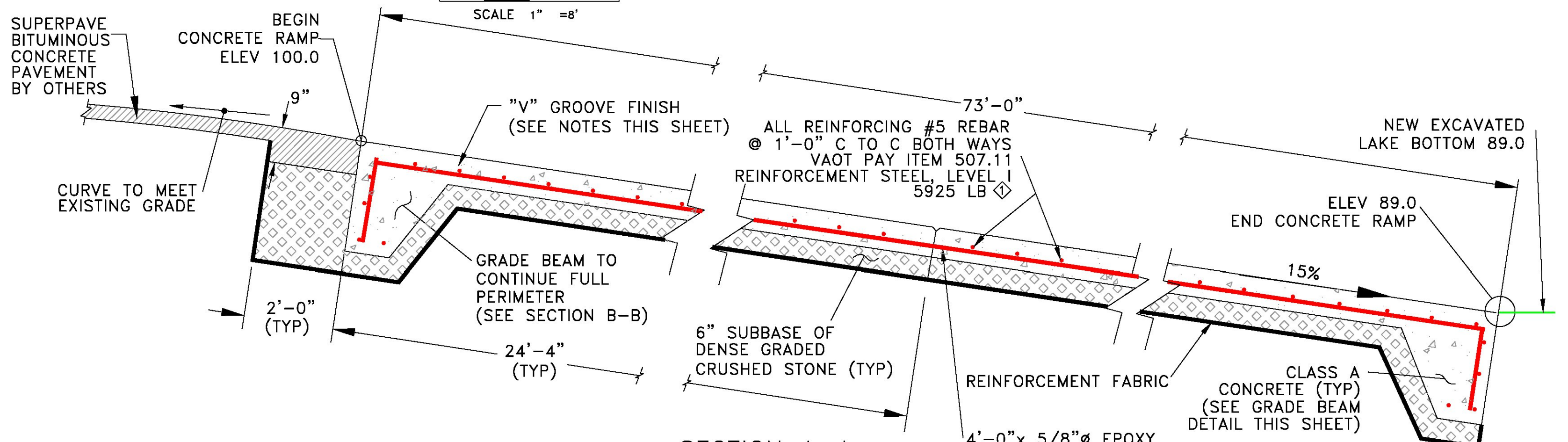
PLAN VIEW CONCRETE DOCK ANCHOR



FRONT ELEVATION CONCRETE DOCK ANCHOR



SECTION VIEW CONCRETE DOCK ANCHOR

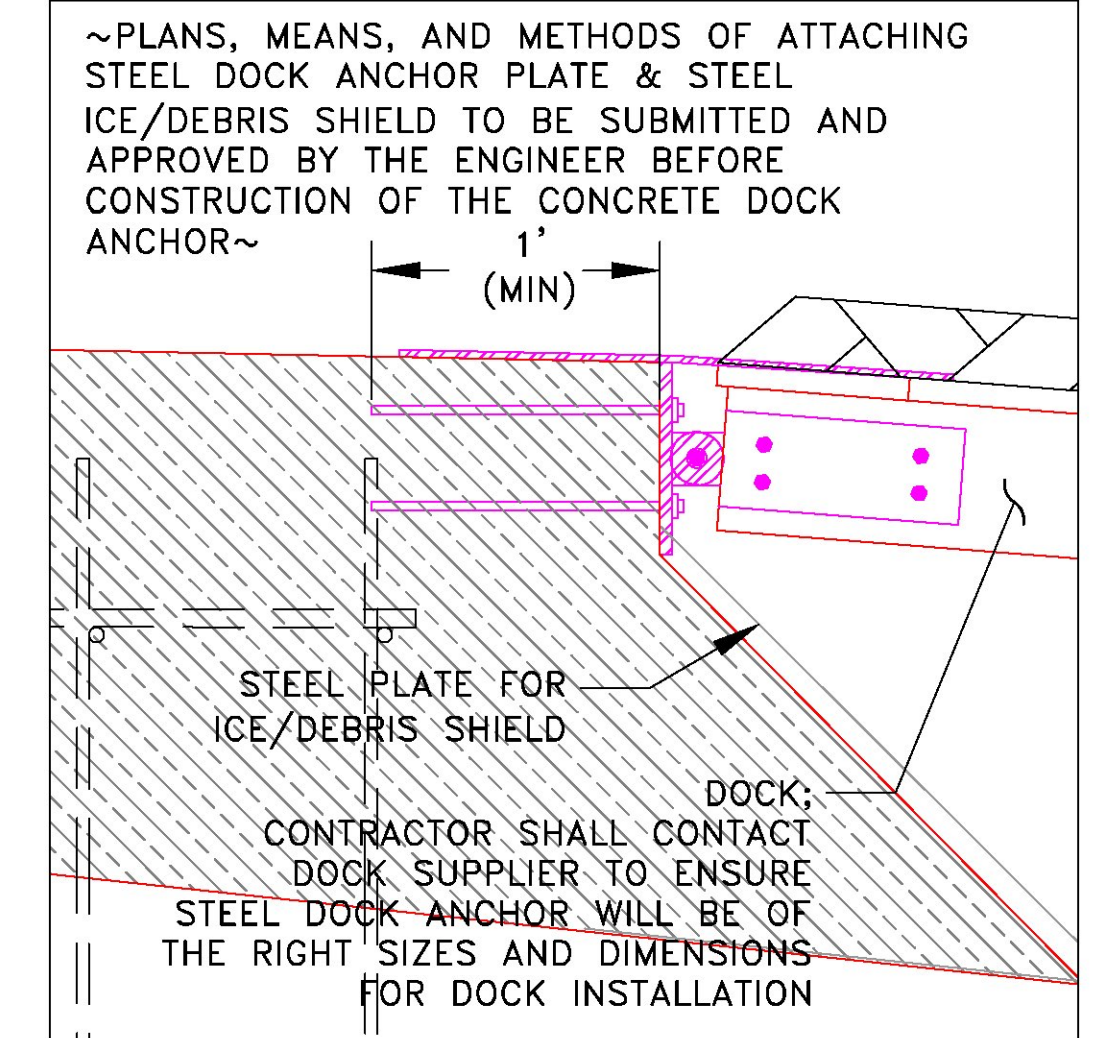


SECTION A-A CONCRETE RAMP

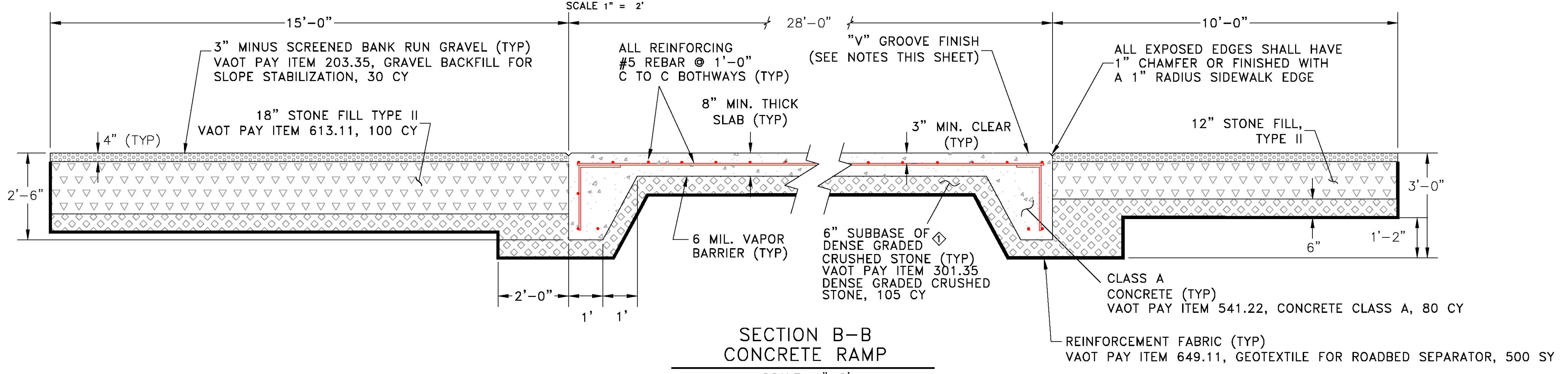
NOTES:

- "V" GROOVE FINISH TO BE AS DIRECTED BY THE ENGINEER. IT IS CRITICAL THAT THE FINISH BE COMPLETED BEFORE CONCRETE STARTS TO SET.
- The Contractor shall be responsible for placing all concrete at a smooth and straight grade line. Construction work shall not interfere with proper "V-Groove" finishing of the concrete, or otherwise leave a hole or protrusion in the finished surface that would present a hazard or nuisance during recreational use of the ramp.
- The final surface of the concrete ramp shall be a V-groove finish as directed by the Engineer. A special V-groove finishing tool supplied by Facilities Engineering Dept. can be used to obtain the acceptable surface finish. It is critical that the contractor start finishing the surface as soon as the concrete has been screeded to assure proper depth of the "V-Groove" finish. Tool must be returned in the same condition or replaced at the contractor's expense. The contractor shall submit a mix design and finishing procedures for approval by the engineer. The use of retarding admixtures may be submitted for approval. A sidewalk edger shall be used to finish around the entire edge of each slab.

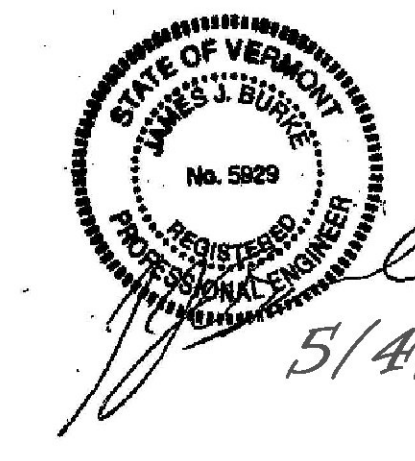
NOTE: DRILLING AND GROUTING FOR DOWELS SHALL BE PAID UNDER VAOT PAY ITEM 507.16, 50 FT



TYPICAL STEEL DOCK ANCHOR PLATE SIDE ELEVATION



SECTION B-B CONCRETE RAMP



STATE OF VERMONT JAMES V. BUDGE No. 5929 REGISTERED PROFESSIONAL ENGINEER		5/4/2012
STATE OF VERMONT AGENCY OF NATURAL RESOURCES DEPARTMENT OF ENVIRONMENTAL CONSERVATION FACILITIES ENGINEERING DIVISION WATERBURY, VERMONT 05671-0407		
DESIGNED	JRG	
DRAWN	BP / JR	
CHECKED	JBB	
SHEET	100 OF 100	
DRAWING NO.	12711CP	
SCALE	AS NOTED	
REVISIONS	DEPARTMENT	FISH AND WILDLIFE
BY	DATE	7/16/12
PROJECT	CHIMNEY POINT ACCESS AREA RAMP REPLACEMENT RAMP DETAILS	
LOCATION	ADDISON, VERMONT	
RECOMMENDED	APPROVED	