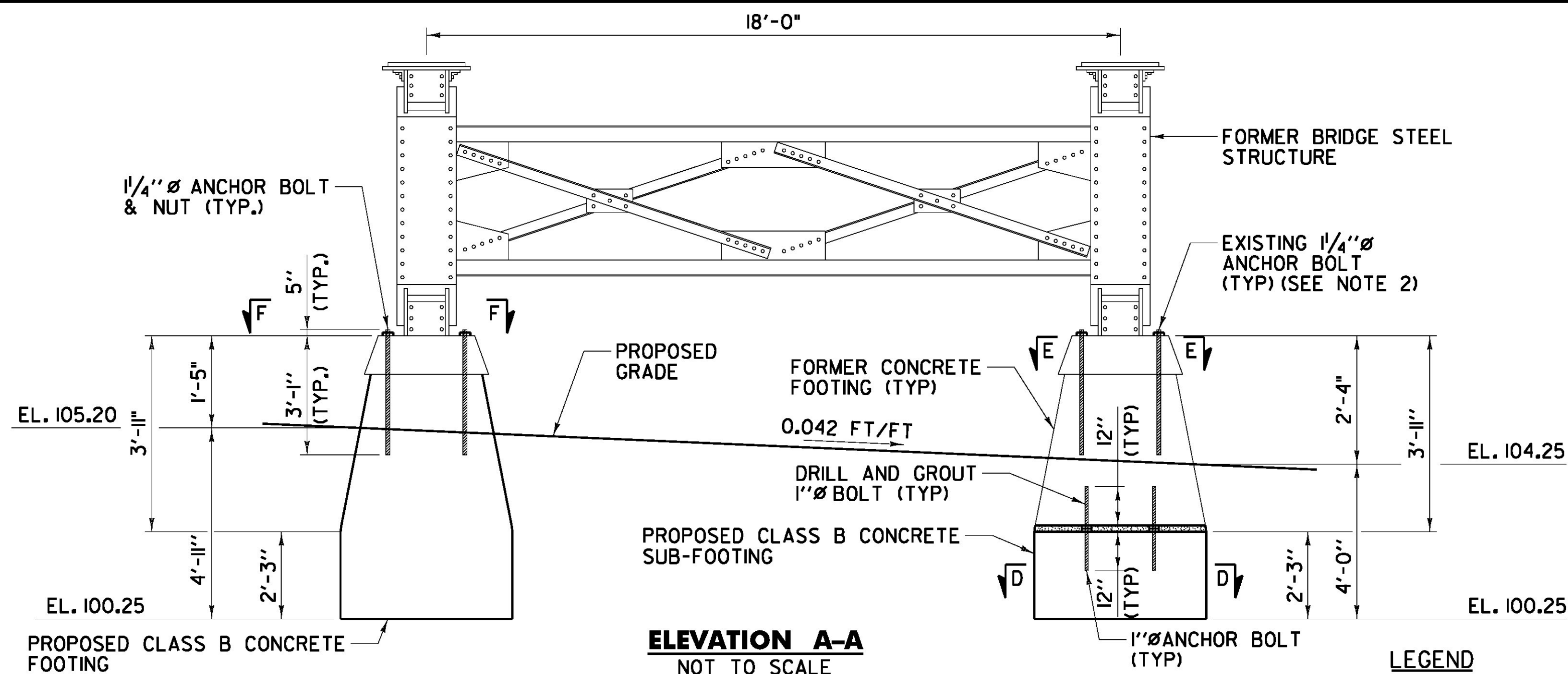
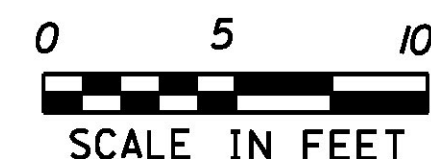
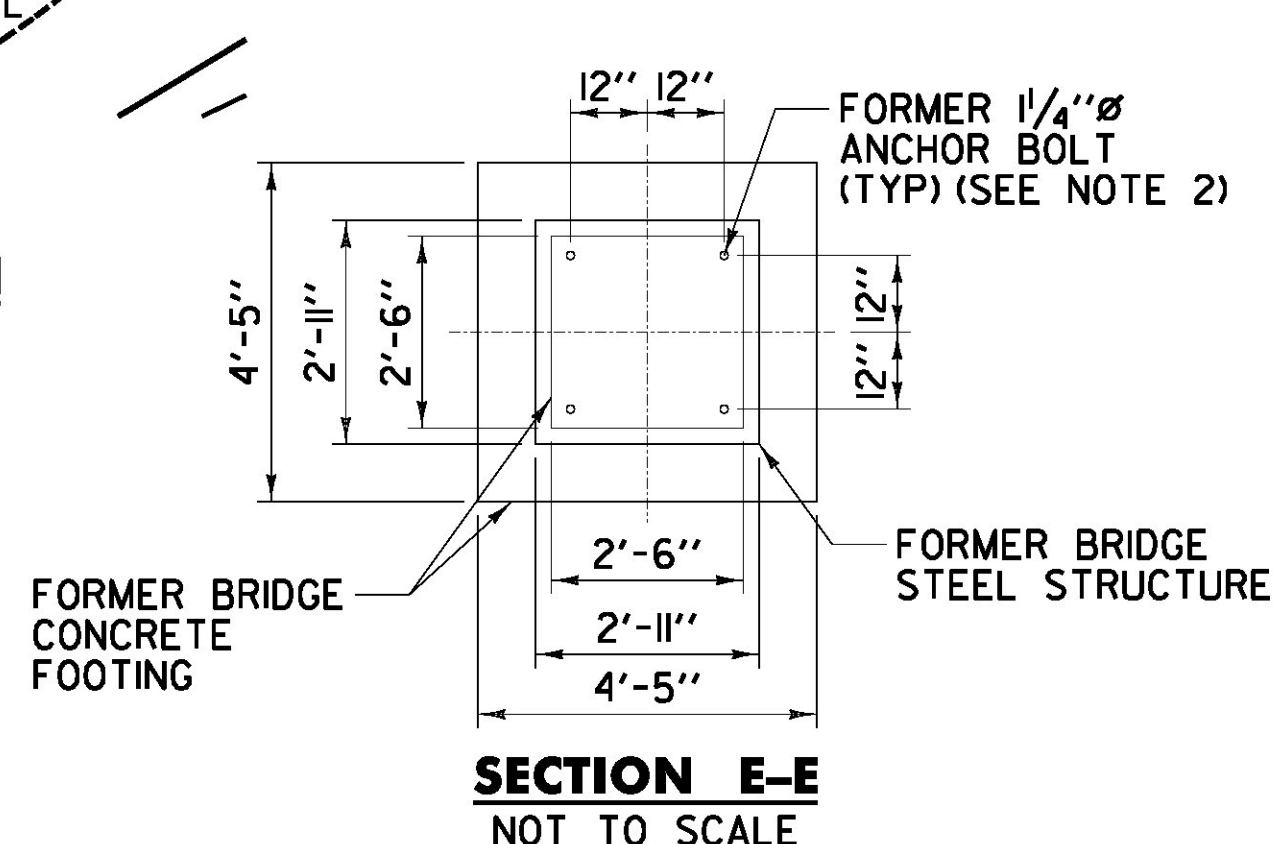
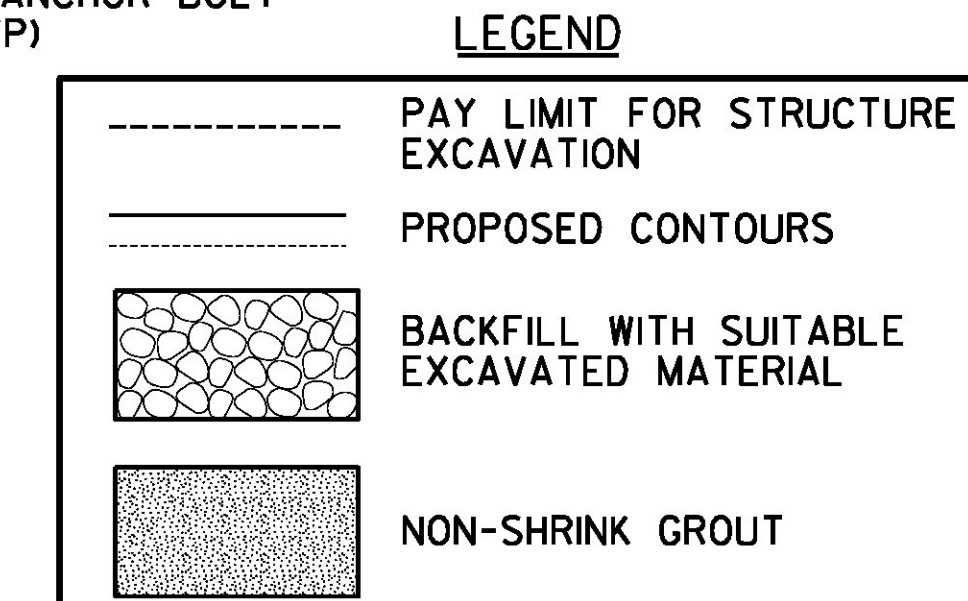


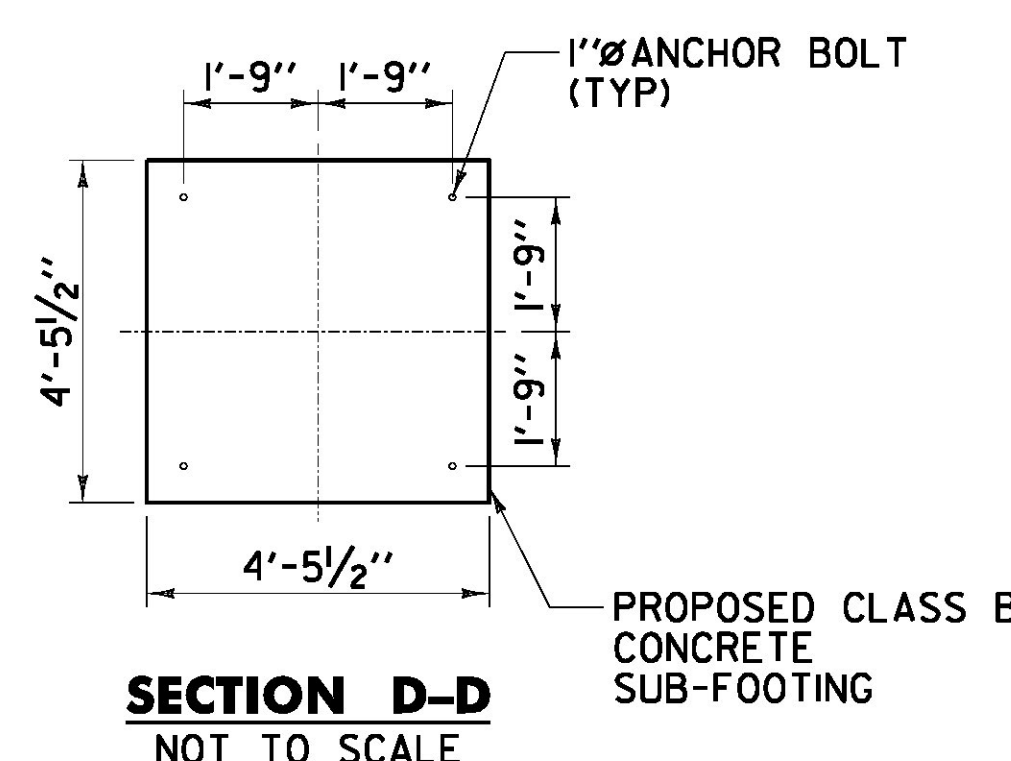
**900.620 SPECIAL PROVISION (COMMEMORATION PIER) PLAN**



**ELEVATION A-A**  
NOT TO SCALE

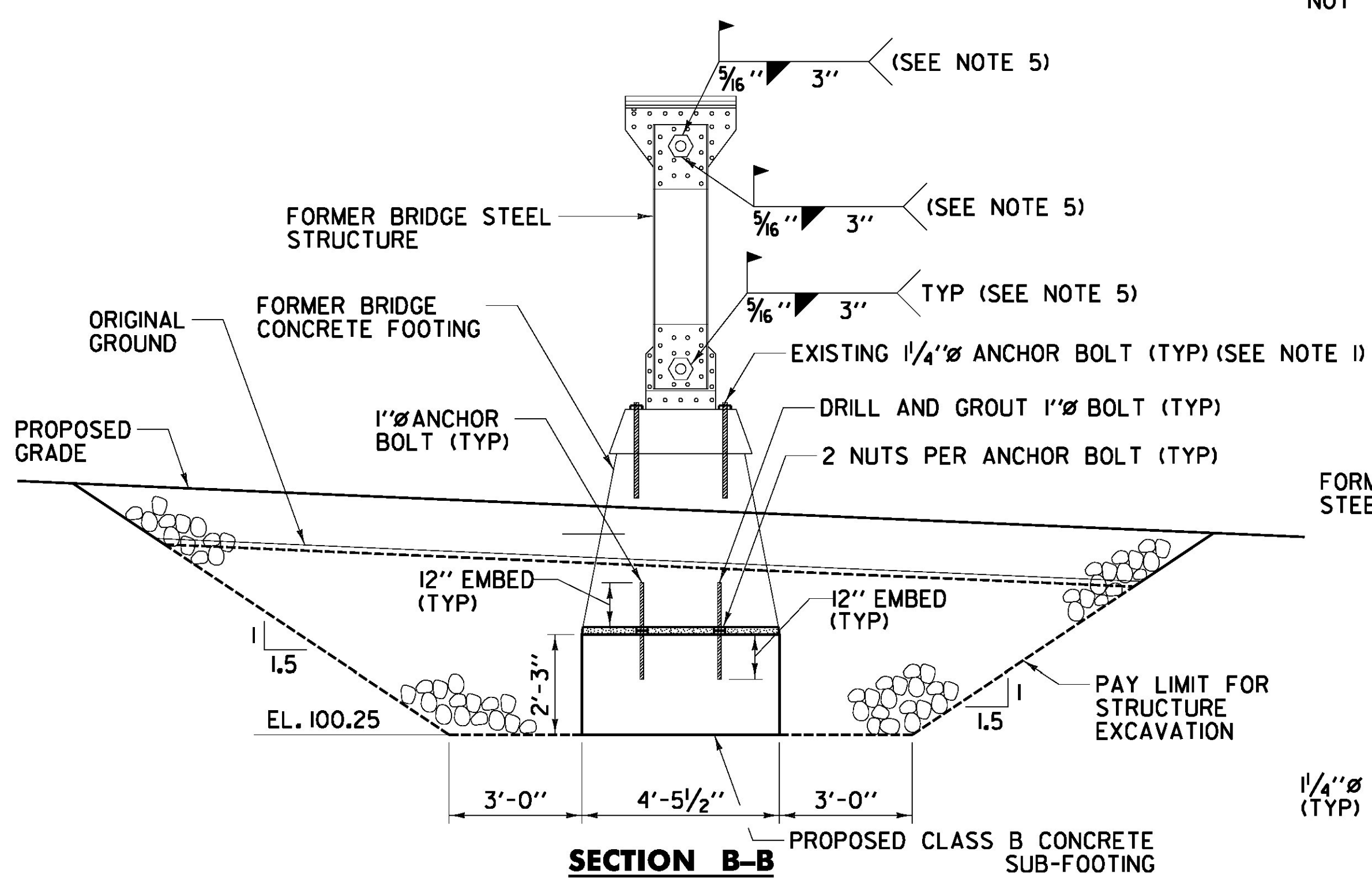


**SECTION E-E**  
NOT TO SCALE

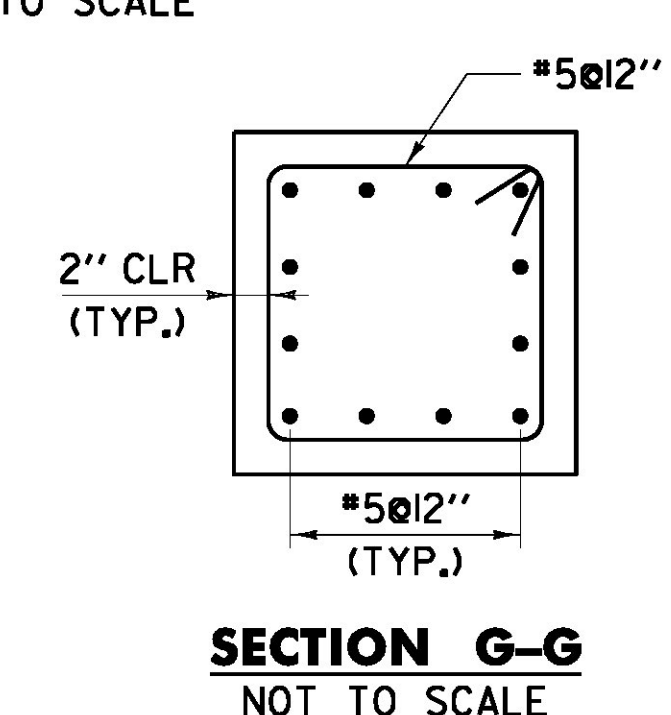


**SECTION D-D**  
NOT TO SCALE

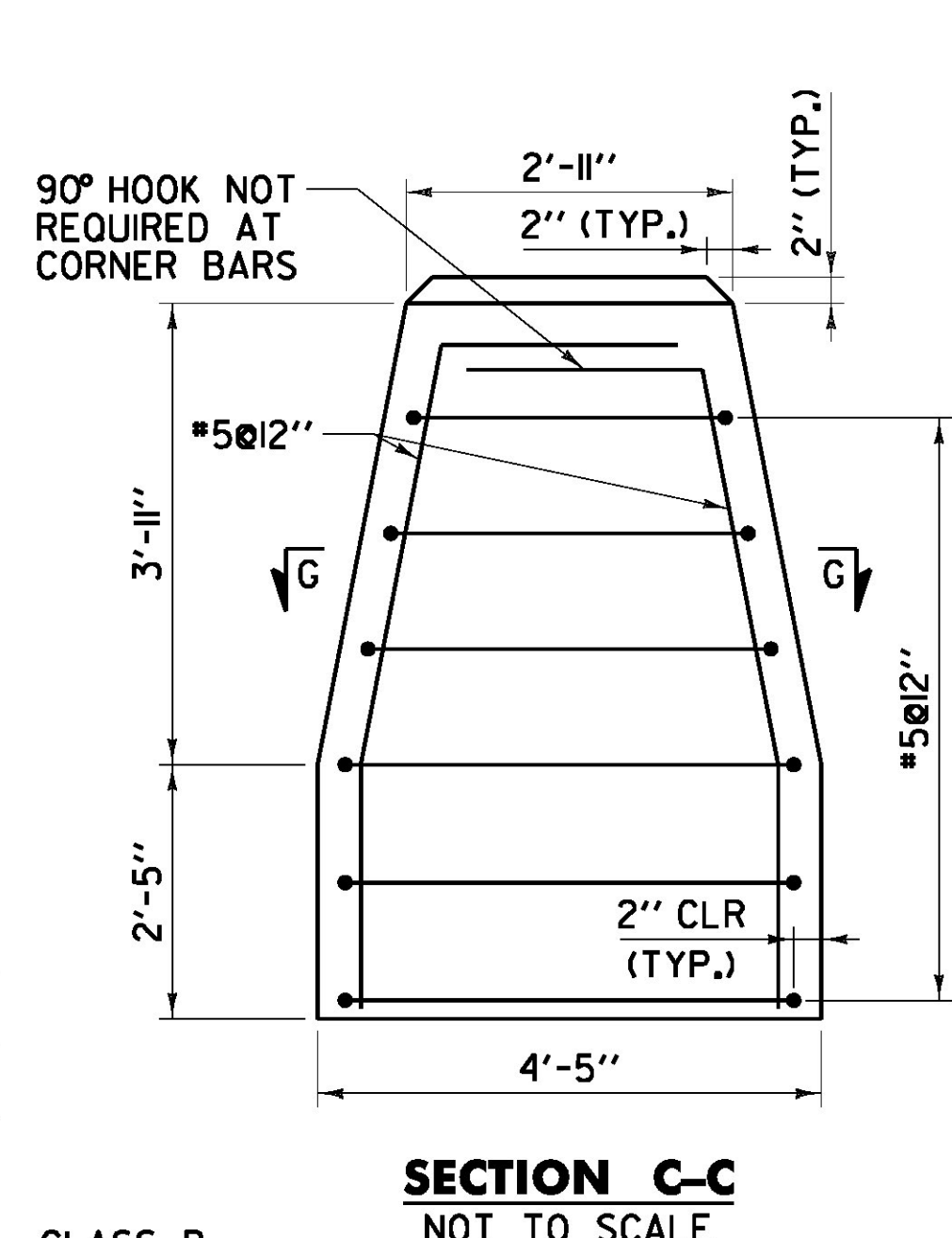
- NOTES:**
- COST OF ALL PROPOSED WORK TO BE INCLUDED IN ITEM 900.620 SPECIAL PROVISION (COMMEMORATION PIER).
  - FORMER BRIDGE STEEL STRUCTURE SHALL BE CONNECTED TO THE EXISTING CONCRETE FOOTING BY USE OF THE EXISTING 1/4" ANCHOR BOLTS. NUTS MAY NEED TO BE REPLACED AS DIRECTED BY THE ENGINEER.
  - APPROXIMATE WEIGHT OF EXISTING STEEL STRUCTURE IS 2 TONS.
  - APPROXIMATE WEIGHT OF ONE EXISTING CONCRETE FOOTING IS 5 TONS.
  - EXISTING UPPER PIN CONNECTION SHALL BE FIELD WELDED ONLY ON THE TOP AND BOTTOM SIDES OF THE EXISTING HEX NUT IN 3" SEGMENTS AS SHOWN IN SECTION B-B. EXISTING LOWER PIN CONNECTION SHALL BE FIELD WELDED ON ALL 6 SIDES OF EXISTING HEX NUT IN 3" SEGMENTS. ALL FIELD WELDS SHALL CONFORM TO SUBSECTION 506.10.
  - ALL STEEL SHALL CONFORM TO SECTION 506.
  - ALL CONCRETE SHALL CONFORM TO SECTION 541.
  - THE FORMER STRUCTURAL STEEL ON THIS PROJECT WAS PAINTED WITH A MATERIAL WHICH MAY CONTAIN LEAD. THE CONTRACTOR SHALL INDEMNIFY AND HOLD THE STATE, ITS OFFICERS AND EMPLOYEES HARMLESS CONCERNING THE CONTRACTOR'S HANDLING, ERECTION, AND RETROFIT OF THE STRUCTURAL STEEL.
  - THE CONTRACTOR SHALL PREPARE ALL EXPOSED SURFACES OF STEEL AND SHOP APPLY METALIZING IN ACCORDANCE WITH SUBSECTIONS 506.14 AND 726.09. THE COST ASSOCIATED WITH ALL WORK INCLUDING, BUT NOT LIMITED TO, TRANSPORTING, HANDLING, LOADING, UNLOADING, PREPARING, AND METALIZING THE STEEL SHALL BE INCLUDED IN THE COST FOR CONTRACT ITEM 900.620 SPECIAL PROVISION (COMMEMORATION PIER).
  - THE CONTRACTOR IS MADE AWARE THAT FIELD CONDITIONS MAY REQUIRE MODIFICATIONS TO CONSTRUCTION DETAILS AND WORK QUANTITIES. THE CONTRACTOR SHALL PERFORM THE WORK IN ACCORDANCE WITH FIELD CONDITIONS AS DIRECTED BY THE ENGINEER.
  - DETAILS LABELED AS "NOT TO SCALE" ARE INTENTIONALLY DRAWN NOT TO SCALE FOR VISUAL CLARITY.



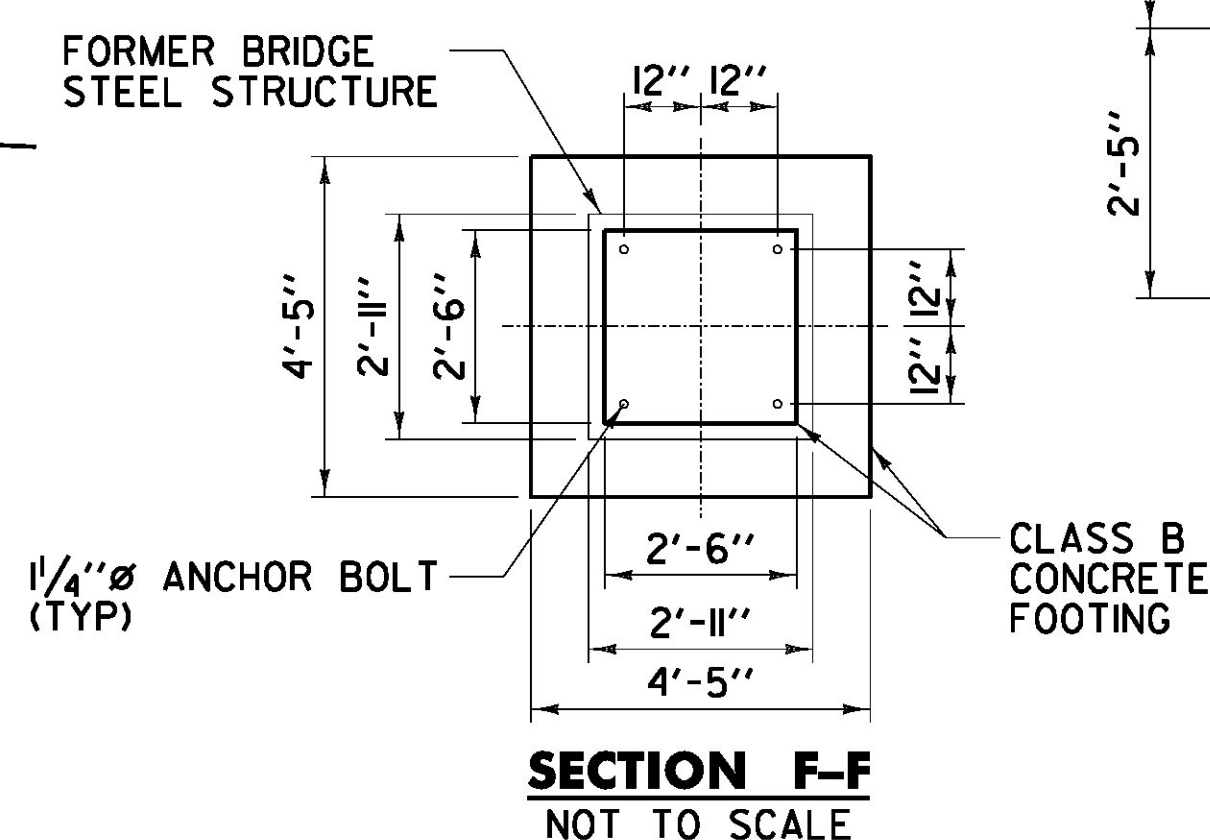
**SECTION B-B**  
NOT TO SCALE



**SECTION G-G**  
NOT TO SCALE



**SECTION C-C**  
NOT TO SCALE



**SECTION F-F**  
NOT TO SCALE

FILE NAME: I:\A\2023\30\ACADD\MSTIN\2\2023\msd\_09.dgn  
 DATE/TIME: 7/12/2012 10:46:56  
 USER: 4666

|   |   |
|---|---|
| <b>MISCELLANEOUS<br/>DETAILS<br/>SHEET #9</b> | PROJECT NAME: LAKE CHAMPLAIN SITE RESTORATION |
|   | PROJECT NUMBER: STP 032-118)                  |
|   | FILE NAME: z12E008_msd_09.dgn                 |
| PROJECT LEADER: D.E.G.                        | PLOT DATE: 7/12/2012                          |
| DESIGNED BY: B.T.H.                           | DRAWN BY: W.G.P.                              |
| DWG. NO.: MD-9                                | CHECKED BY: D.E.G.                            |
|   | SHEET 69 OF 100                               |