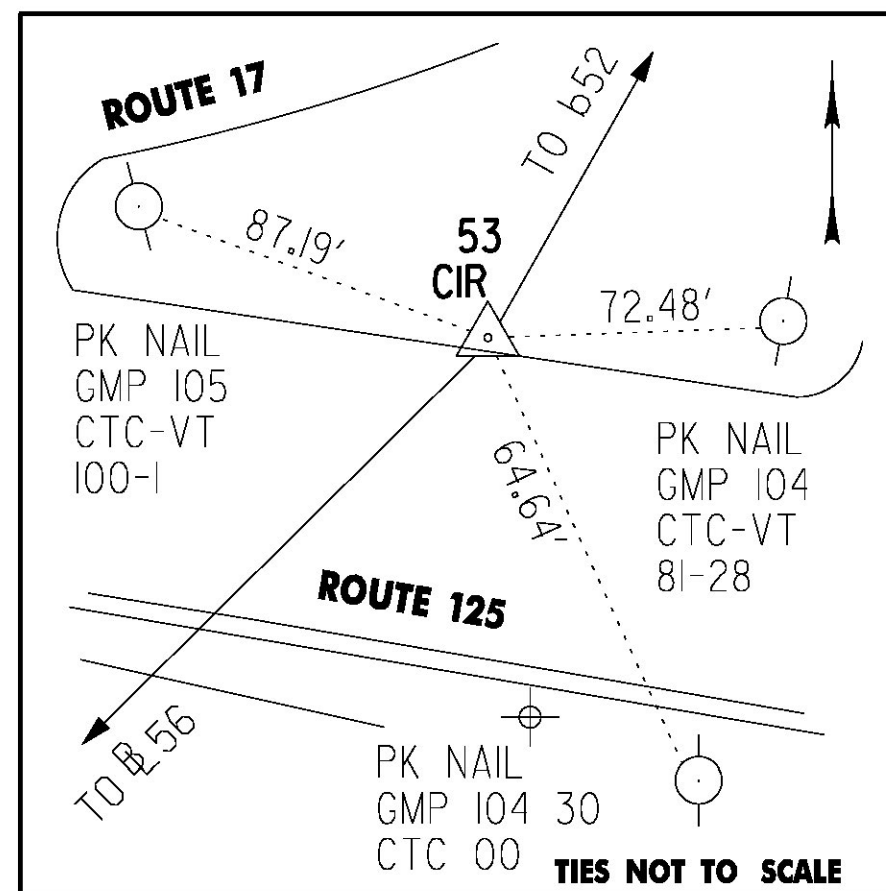


**52 STA. 96+26.42**

CAPPED IRON ROD SET APPROX. 830.0' +/- NORTH OF THE INTERSECTION OF ROUTE 125 AND APPROX. 1.0' +/- EAST OF EDGE OF PAVEMENT ROUTE 17.

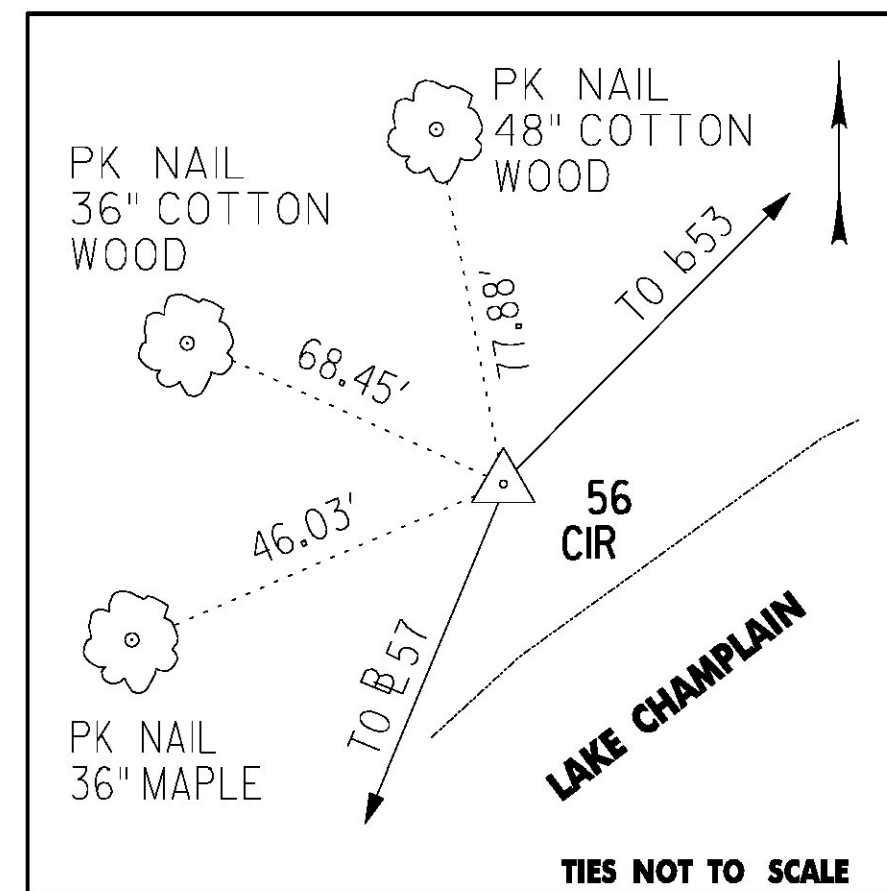
NYSPCS EAST ZONE NAD 83/96  
N: 1898018.778  
E: 776861.491  
EL.: 121.12'



**53 STA. 89+44.06**

CAPPED IRON ROD SET APPROX. 220.0' +/- EAST OF THE INTERSECTION OF ROUTE 17 AND APPROX. 1.0' +/- NORTH OF EDGE OF PAVEMENT ROUTE 125.

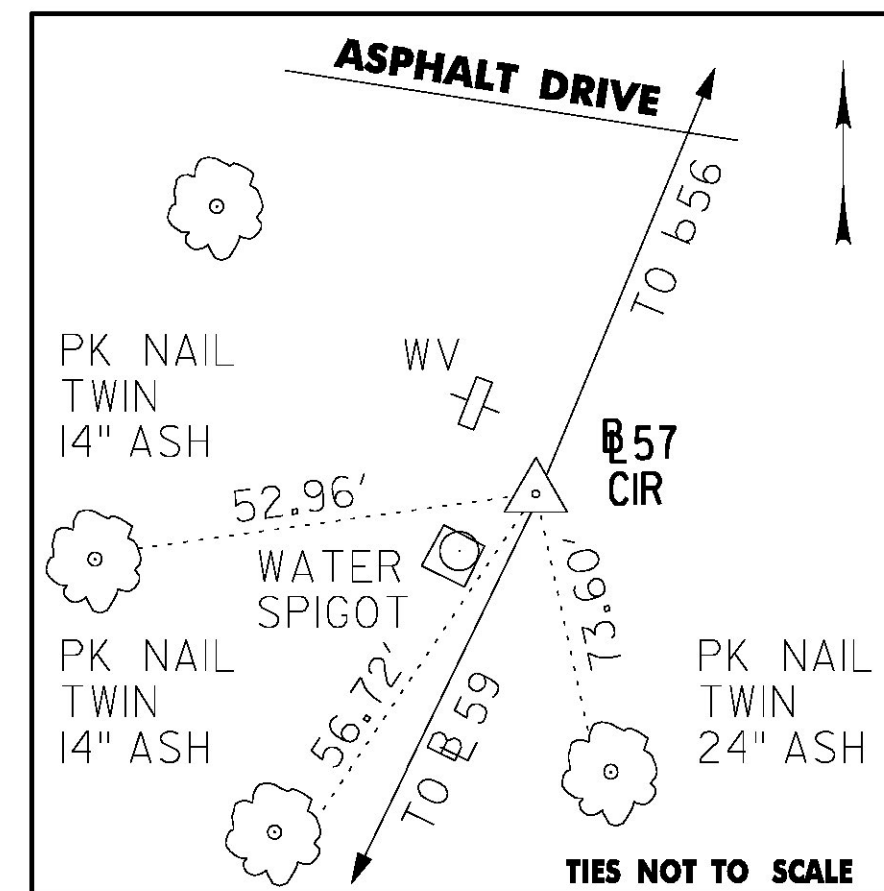
NYSPCS EAST ZONE NAD 83/96  
N: 1897429.996  
E: 776516.606  
EL.: 124.38'



**56 STA. 79+90.21**

CAPPED IRON ROD SET APPROX. 200.0' +/- EAST OF THE NORTH END OF THE EXISTING BRIDGE AND APPROX. 10.0' +/- FROM EDGE OF LAKE CHAMPLAIN.

NYSPCS EAST ZONE NAD 83/96  
N: 1896756.696  
E: 775840.967  
EL.: 96.85'



**57 STA. 59+23.04**

CAPPED IRON SET APPROX. 102.0' +/- SOUTH OF LAKE CHAMPLAIN AND APPROX. 209.0' +/- NORTH OF THE PARK GUARD BOOTH.

NYSPCS EAST ZONE NAD 83/96  
N: 1894849.721  
E: 775043.066  
EL.: 122.16'

**PROJECT SURVEY CONTROL**

BASE MAPPING OF THE PROJECT SITE IS FROM PHOTOGRAMMETRY PERFORMED DURING SPRING 2007 WITH MAPPING COMPLETED DURING SUMMER 2007. MAP UNITS: USC (METERS)

THE PROJECT SURVEY HORIZONTAL CONTROL WAS ESTABLISHED BY THE USE OF THE GLOBAL POSITIONING SYSTEM (GPS)

THE HORIZONTAL DATUM IS THE NORTH AMERICAN DATUM OF 1983, 1996 ADJUSTMENT NAD 83/96

THE COORDINATE SYSTEM IS THE NEW YORK STATE PLANE COORDINATE SYSTEM, EASTERN ZONE, 3101

STATE PLANE COORDINATE SYSTEM SURVEY BASELINE DISTANCES ARE REDUCED TO THE ELLIPSOID BY AN AVERAGE COMBINED ELEVATION-GRID FACTOR OF 0.99998994939

THE PUBLISHED HORIZONTAL COORDINATES FOR THE NATIONAL GEODETIC SURVEY (GPS) MONUMENTS USED TO ESTABLISH CONTROL ARE:

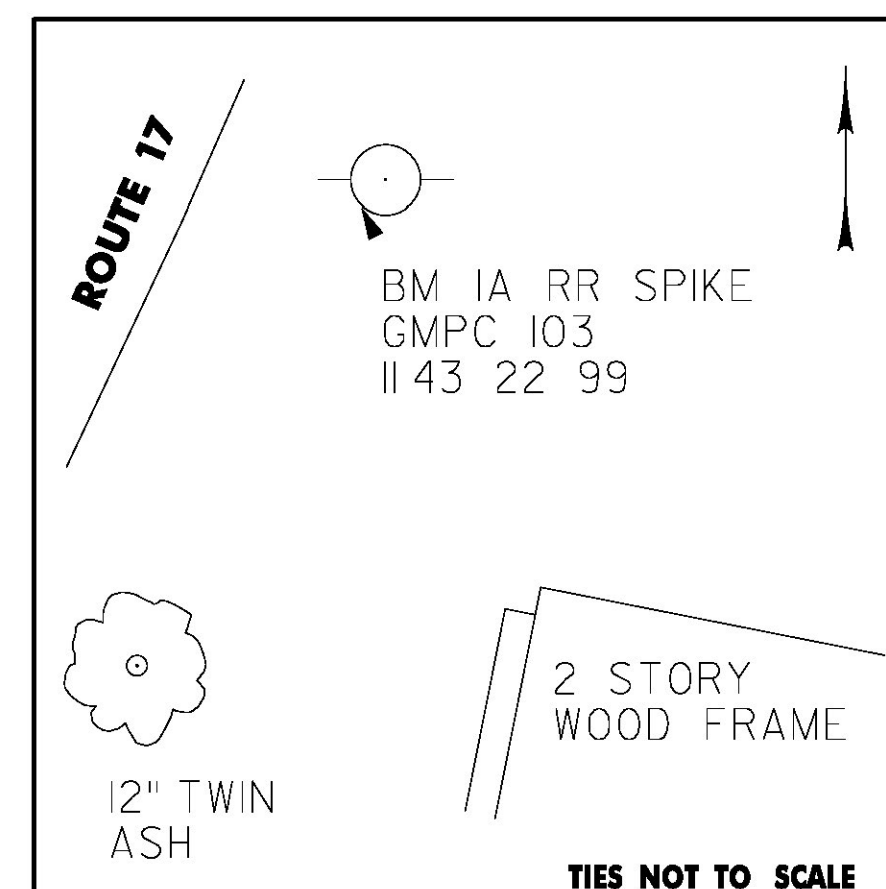
PID	STATION NAME	NORTHING	EASTING
PG 1601	ADDISON	583,375.656	240,052.589
AA7924	LEWIS	606,101.332	227,176.431
AA7932	NORTH HUDSON	568,506.662	211,073.876
OD1793	TICONDEROGA	556,905.758	239,329.592

THE VERTICAL DATUM IS THE NORTH AMERICAN VERTICAL DATUM OF 1988 NAVD 88. (GEOID03)

THE VERTICAL ELEVATIONS WERE ESTABLISHED BY THE USE OF THE GLOBAL POSITIONING SYSTEM (GPS)

THE PUBLISHED ELEVATION FOR THE NATIONAL GEODETIC SURVEY MONUMENT WAS USED TO ESTABLISH CONTROL IS:

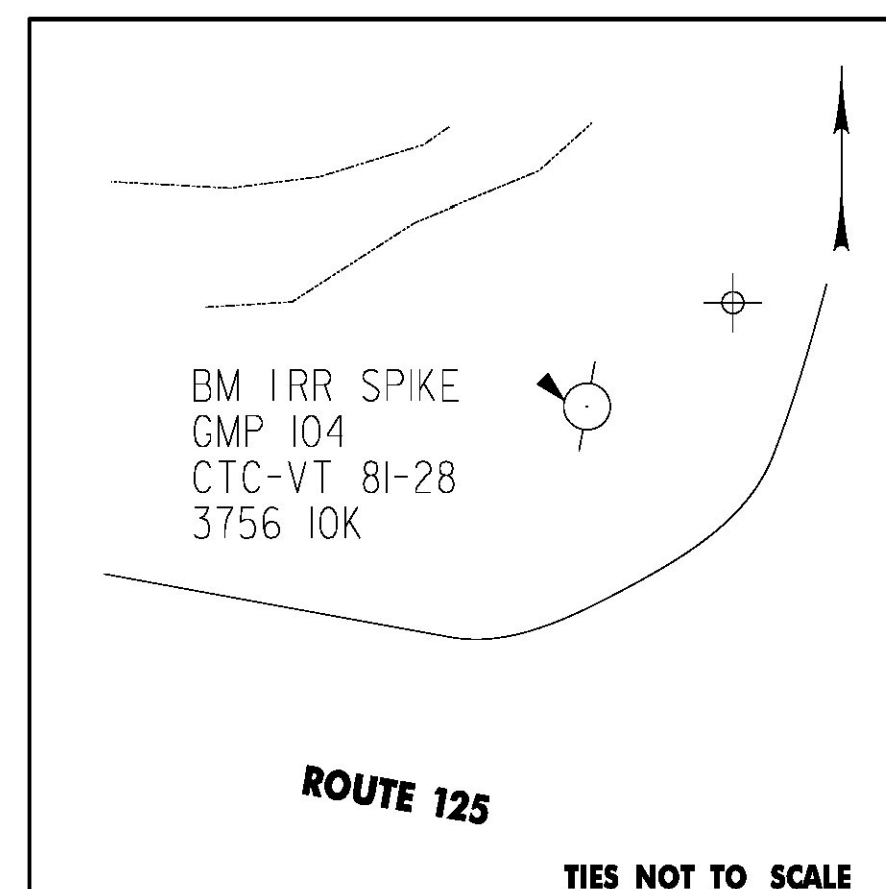
PID	STATION NAME	ELEVATION	VERTICAL ORDER
PG 1606	B473	41.883 m	FIRST CLASS II



**BENCHMARK 1A**

RAILROAD SPIKE SET IN POLE GMP 103 1143 22 99 APPROX. 470.0' +/- NORTHEAST OF THE INTERSECTION OF ROUTE 125 AND APPROX. 10.0' +/- EAST OF EDGE OF PAVEMENT ROUTE 17.

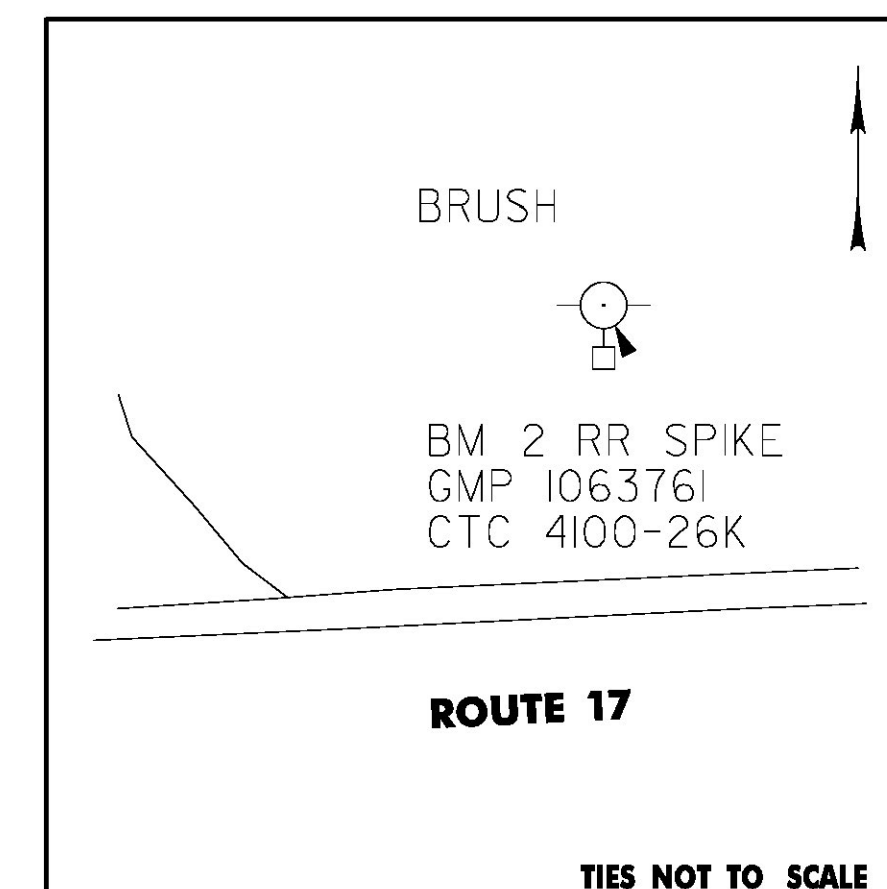
NAVD 88  
EL.: 121.88'



**BENCHMARK 1**

RAILROAD SPIKE SET IN POLE GMP 104 CTC-VT 81-28 3756-10K APPROX. 287.0' +/- EAST OF THE INTERSECTION OF ROUTE 17 AND APPROX. 1.0' +/- NORTH OF EDGE OF PAVEMENT ROUTE 125.

NAVD 88  
EL.: 123.03'



**BENCHMARK 2**

RAILROAD SPIKE SET IN POLE GMP 1063761 CTC 4100-26K APPROX. 147.0' +/- WEST OF THE INTERSECTION OF ROUTE 125 AND APPROX. 15.0' +/- NORTH OF EDGE OF PAVEMENT ROUTE 17.

NAVD 88  
EL.: 122.28'

BASELINE TIE SHEET	PROJECT NAME: LAKE CHAMPLAIN SITE RESTORATION	
	PROJECT NUMBER: STP 032-1(18)	FILE NAME: z12E008_blt_01.dgn
DESIGNED BY: B.T.H.	PROJECT LEADER: D.E.G.	DRAWN BY: W.G.P.
DWG. NO.: BLT-1	CHECKED BY: D.E.G.	SHEET 17 OF 100