

NOTES:

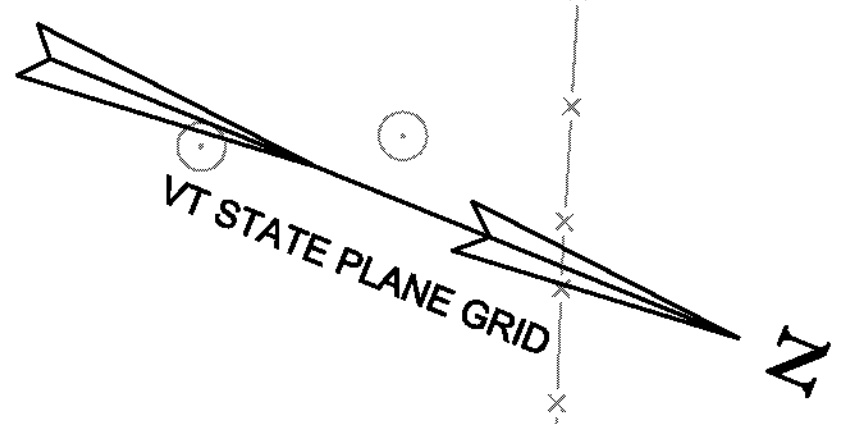
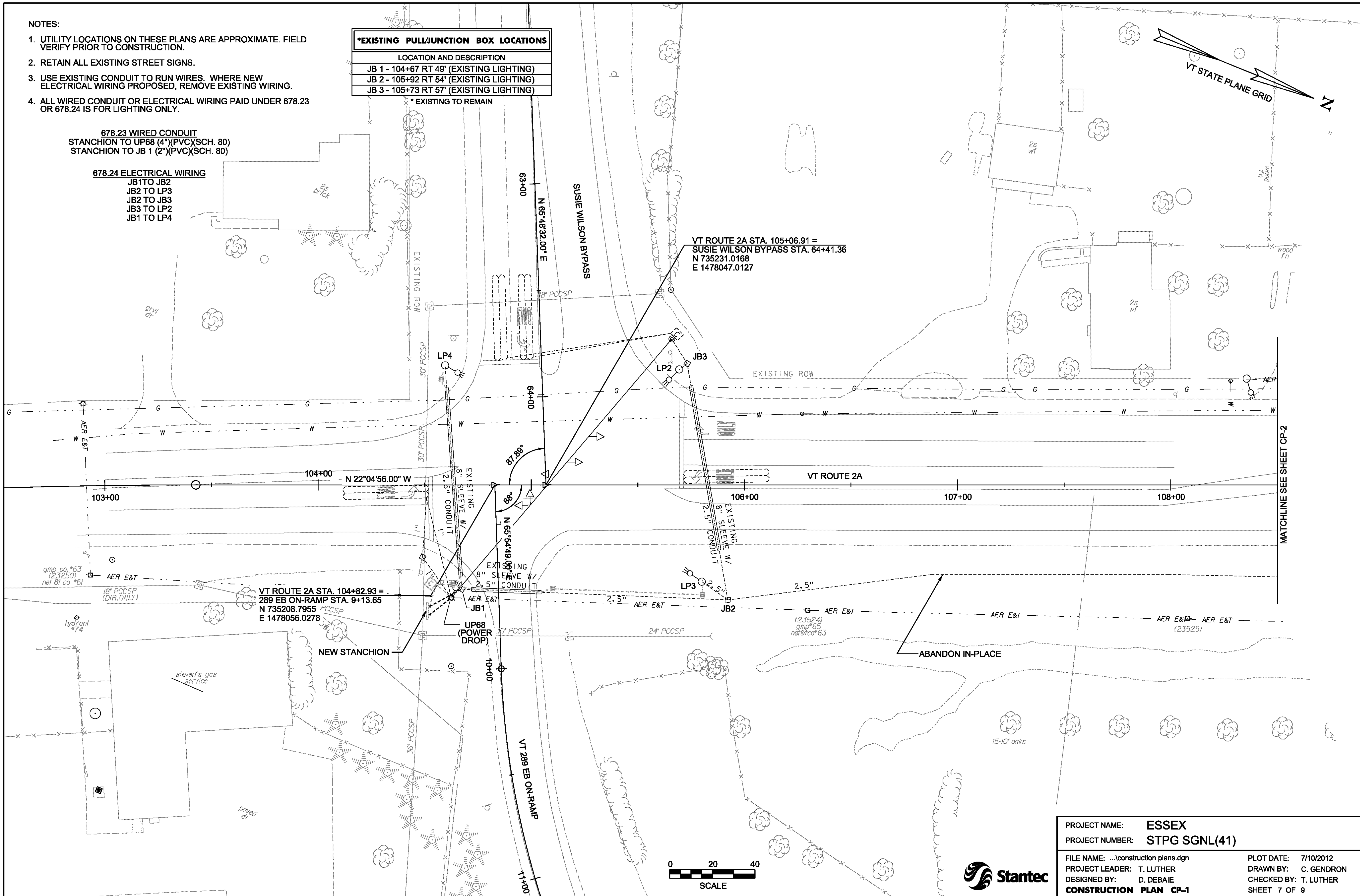
1. UTILITY LOCATIONS ON THESE PLANS ARE APPROXIMATE. FIELD VERIFY PRIOR TO CONSTRUCTION.
2. RETAIN ALL EXISTING STREET SIGNS.
3. USE EXISTING CONDUIT TO RUN WIRES. WHERE NEW ELECTRICAL WIRING PROPOSED, REMOVE EXISTING WIRING.
4. ALL WIRED CONDUIT OR ELECTRICAL WIRING PAID UNDER 678.23 OR 678.24 IS FOR LIGHTING ONLY.

*EXISTING PULL/JUNCTION BOX LOCATIONS	
LOCATION AND DESCRIPTION	
JB 1 - 104+67 RT 49'	(EXISTING LIGHTING)
JB 2 - 105+92 RT 54'	(EXISTING LIGHTING)
JB 3 - 105+73 RT 57'	(EXISTING LIGHTING)

* EXISTING TO REMAIN

678.23 WIRED CONDUIT
 STANCHION TO UP68 (4")(PVC)(SCH. 80)
 STANCHION TO JB 1 (2")(PVC)(SCH. 80)

678.24 ELECTRICAL WIRING
 JB1 TO JB2
 JB2 TO LP3
 JB2 TO JB3
 JB3 TO LP2
 JB1 TO LP4



VT ROUTE 2A STA. 105+06.91 =
 SUSIE WILSON BYPASS STA. 64+41.36
 N 735231.0168
 E 1478047.0127

VT ROUTE 2A STA. 104+82.93 =
 289 EB ON-RAMP STA. 9+13.65
 N 735208.7955
 E 1478056.0278

MATCHLINE SEE SHEET CP-2

PROJECT NAME:	ESSEX	PLOT DATE:	7/10/2012
PROJECT NUMBER:	STPG SGNL(41)	DRAWN BY:	C. GENDRON
FILE NAME:	...construction plans.dgn	CHECKED BY:	T. LUTHER
PROJECT LEADER:	T. LUTHER	CONSTRUCTION PLAN CP-1	SHEET 7 OF 9
DESIGNED BY:	D. DEBAIE		

