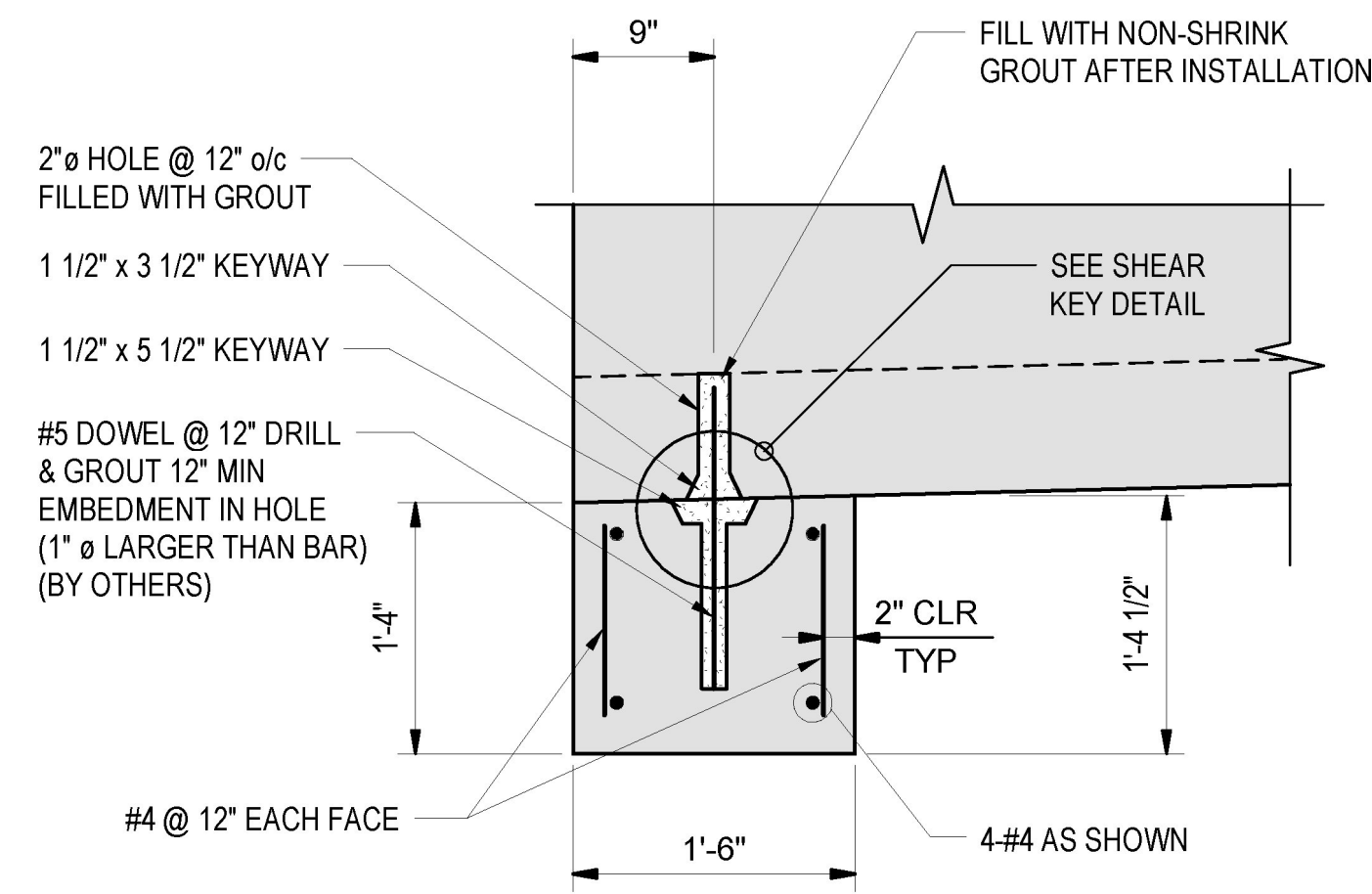
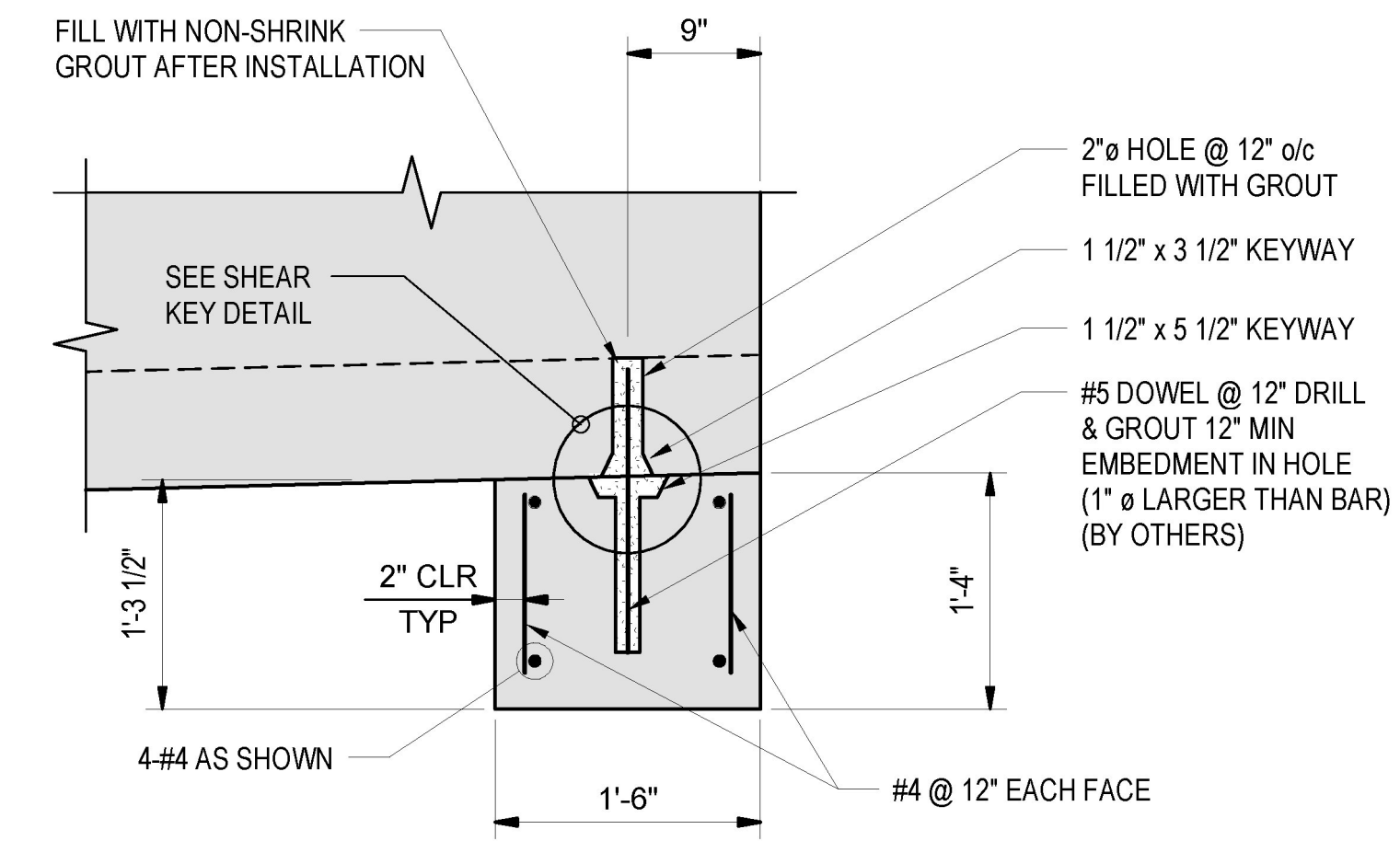


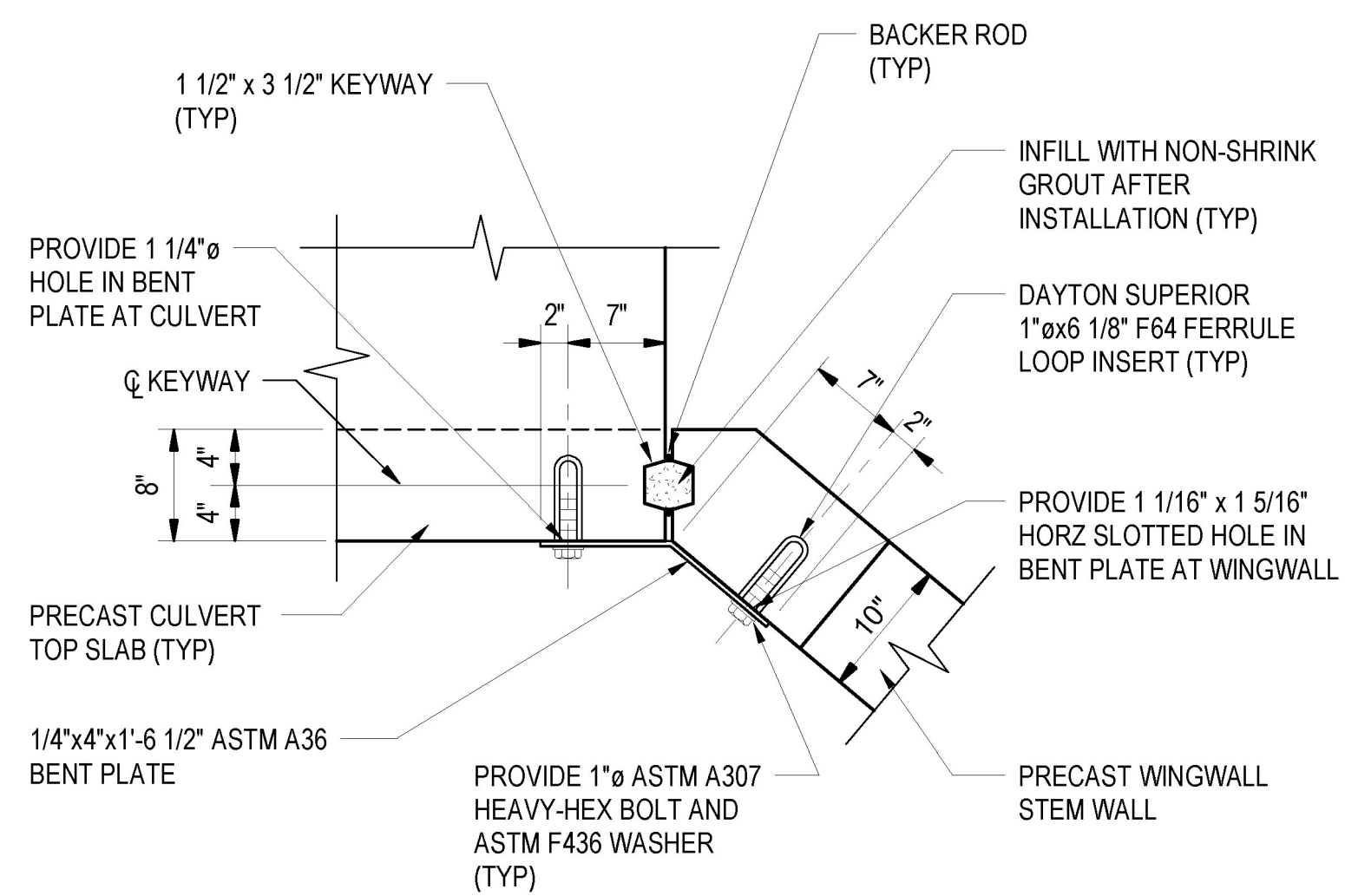
TYPICAL PRECAST CONCRETE BAFFLE SECTION
1 1/2" = 1'-0"



CUTOFF WALL CW-1 SECTION
1" = 1'-0"

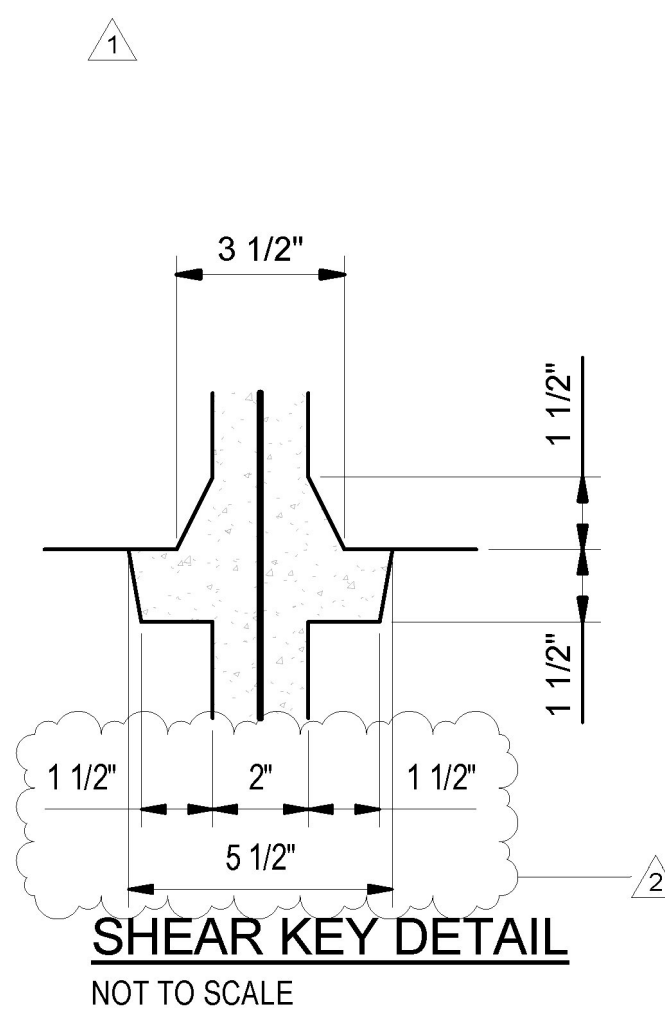


CUTOFF WALL CW-2 SECTION
1" = 1'-0"

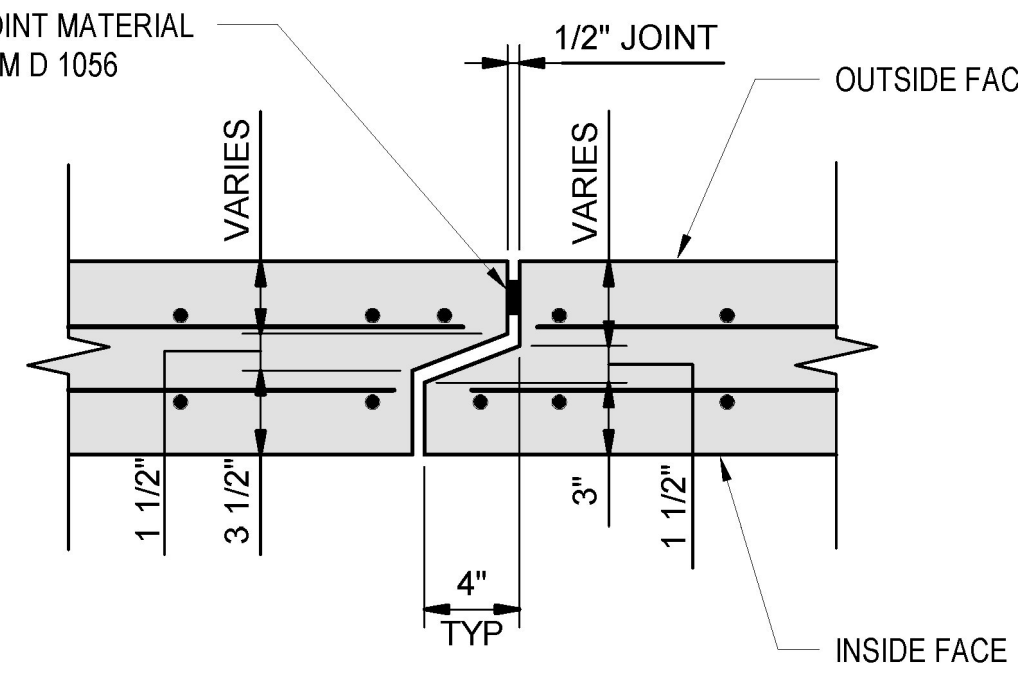


TYPICAL WINGWALL/CULVERT CONNECTION DETAIL
1" = 1'-0"

- ALL MECHANICAL CONNECTOR STEEL BETWEEN WINGWALL AND CULVERT SHALL BE GALVANIZED.

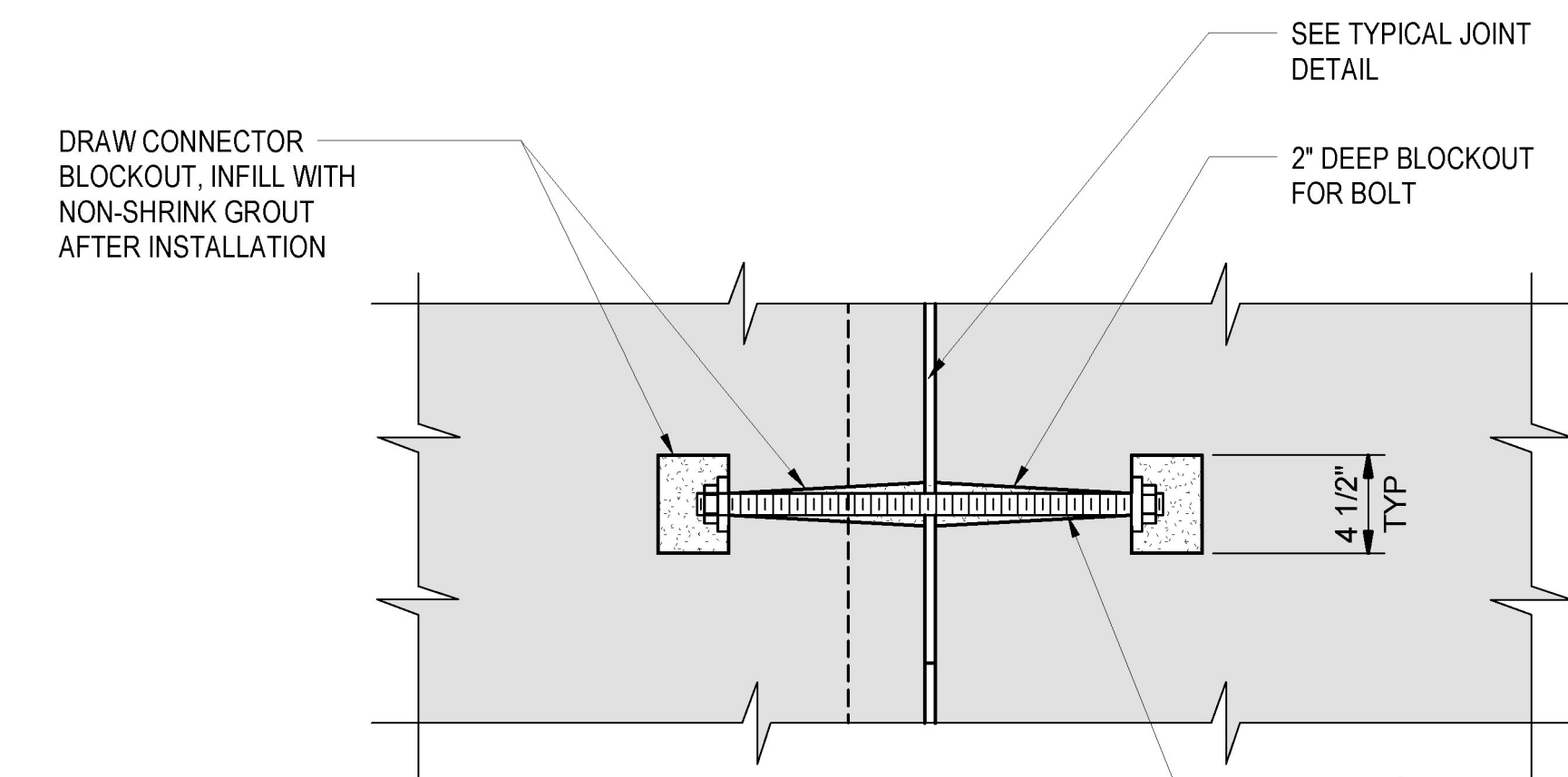


- 1"x1" CLOSED CELL JOINT MATERIAL CONFORMING TO ASTM D 1056



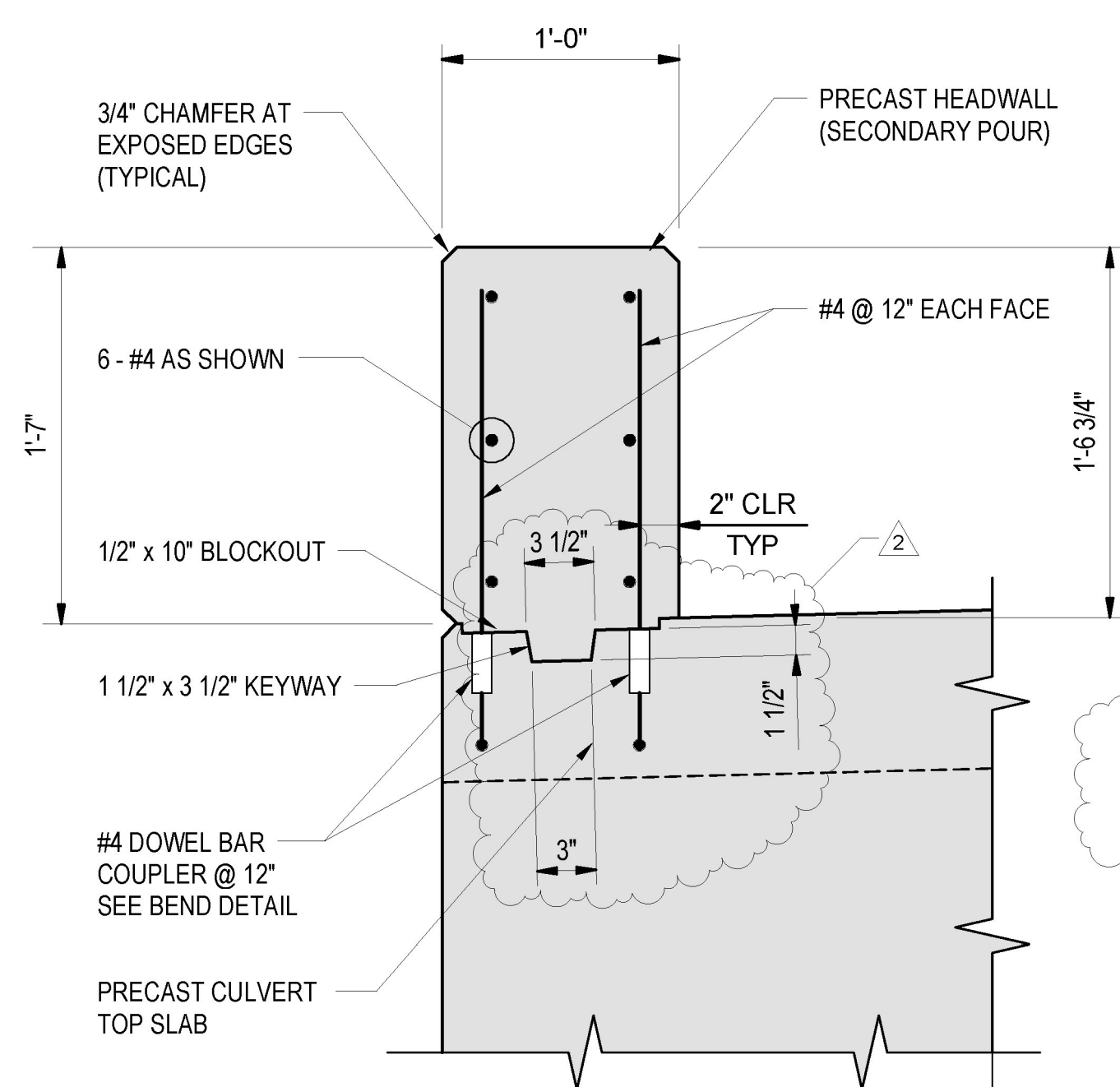
TYPICAL JOINT DETAIL
NOT TO SCALE

Vermont Agency of Transportation
RECEIVED
CK'D BY J. B. McCarthy OK'D BY J. B. McCarthy
May 17, 2017
RESUBMIT No Approved
BY J. B. McCarthy DATE 05/18/17

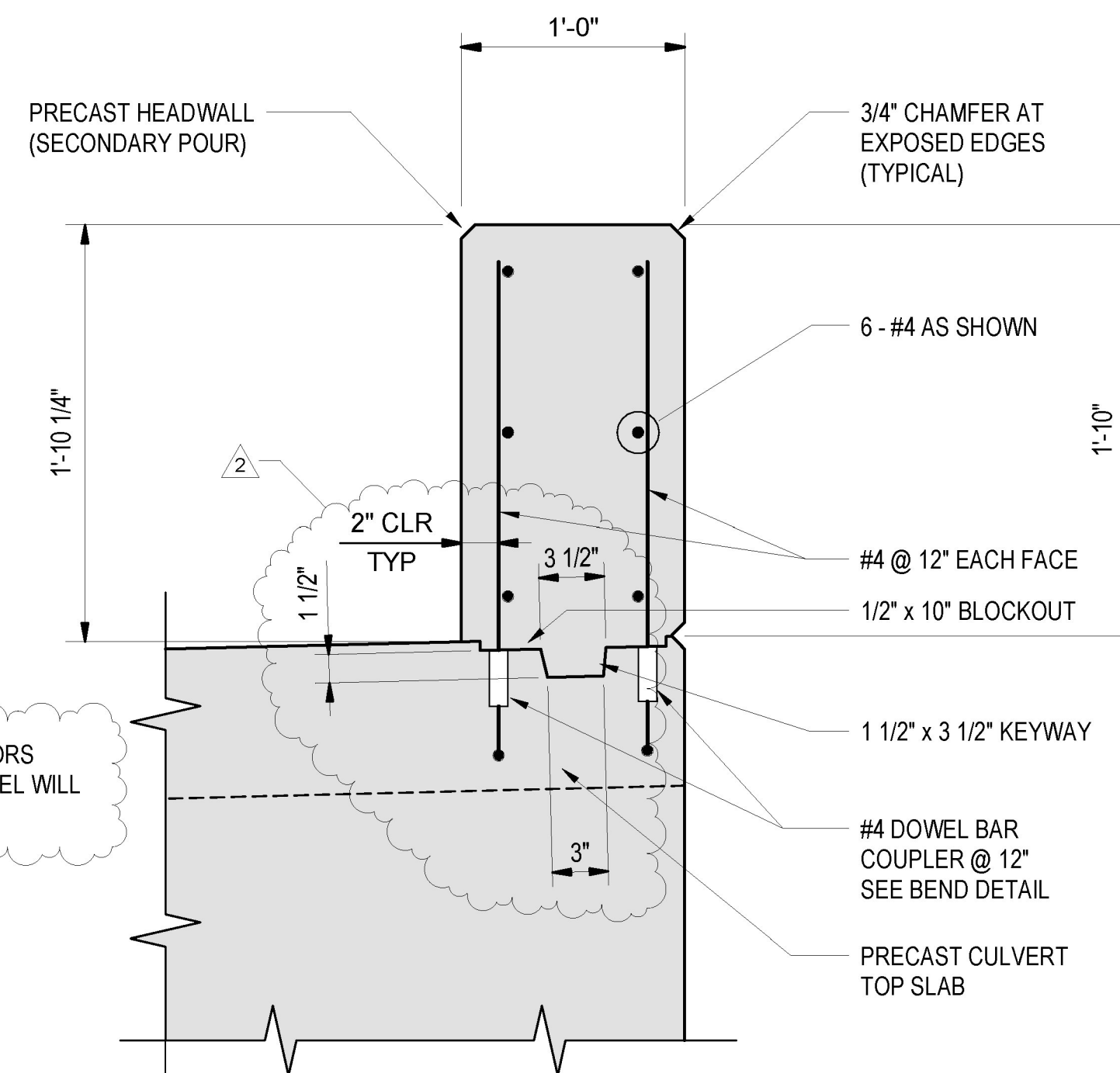
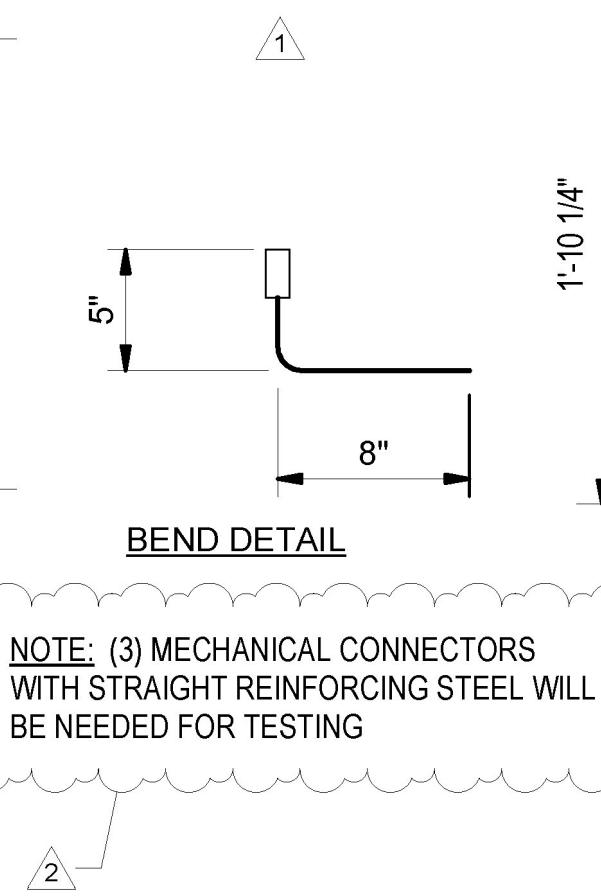


- ALL DRAW CONNECTOR HARDWARE TO BE HOT-DIP GALVANIZED.
- DRAW CONNECTOR TO REMAIN IN PLACE AFTER INSTALLATION.
- DRAW CONNECTOR TO BE PULLED UNTIL JOINT MATERIAL IS COMPRESSED.

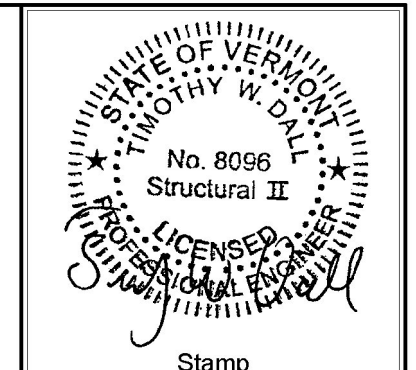
TYPICAL DRAW CONNECTOR DETAIL
NOT TO SCALE



HEADWALL HW-1 SECTION
1 1/2" = 1'-0"



HEADWALL HW-2 SECTION
1 1/2" = 1'-0"



Date	Description
04/26/17	SUBMITTAL REVIEW COMMENTS
05/15/17	SUBMITTAL REVIEW COMMENTS

ENGINEERING VENTURES PC
208 Flynn Avenue, Suite 2A, Burlington, VT 05401
tel. 802-863-6225 fax. 802-863-6306
85 Mechanic Street, Suite B2-2, Lebanon, NH 03766
tel. 603-442-9333 fax. 603-442-9331
www.engineeringventures.com

CAMP
PRECAST CONCRETE
70 PRECAST ROAD
MILTON, VT 05469
PHONE: (802) 893-2401
FAX: (802) 893-1542

Sheet Title: **DETAILS**
Project Title: **TOWN OF ST. ALBANS VT ROUTE 104, CULVERT #19**
ST. ALBANS, VERMONT

Designed By:	CPA
Checked By:	TWD
Drawn	JTM
Scale:	AS NOTED
Date:	04/04/2017