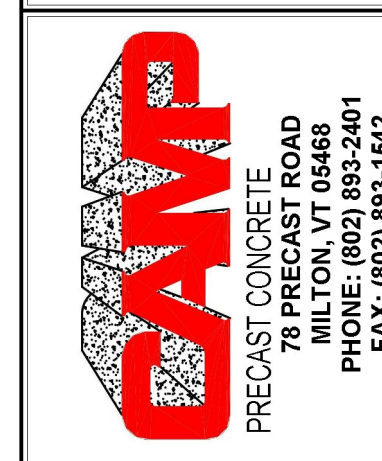


Date	04/26/17
Description	SUBMITTAL REVIEW COMMENTS
No.	1

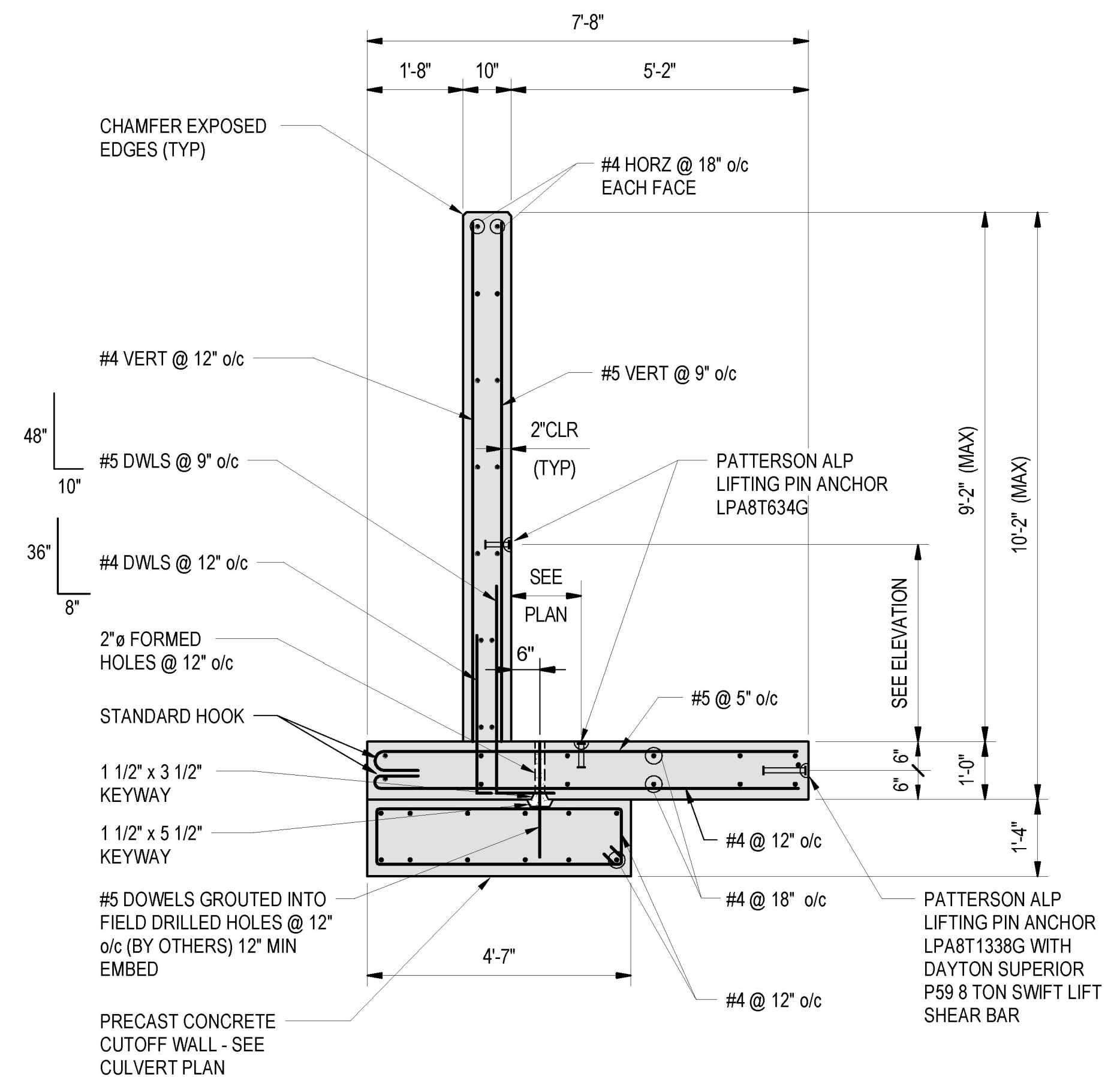
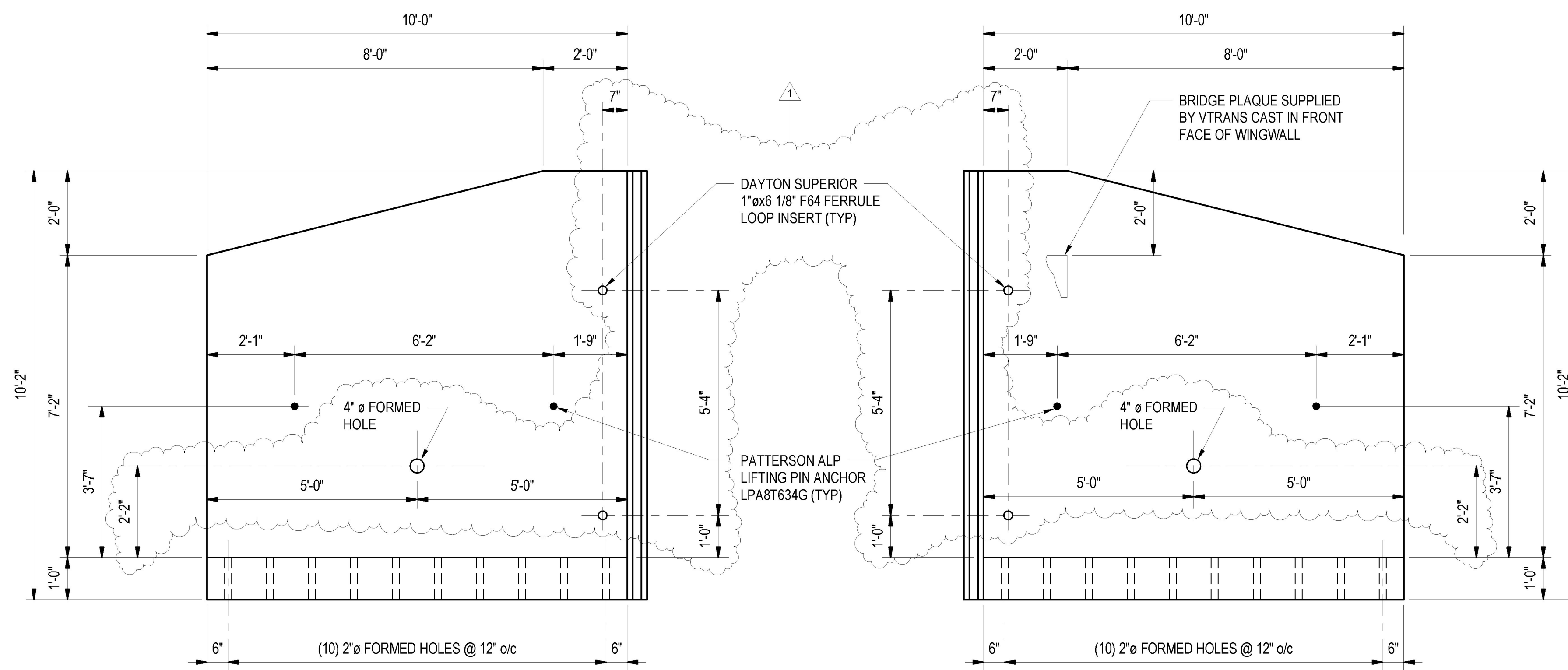
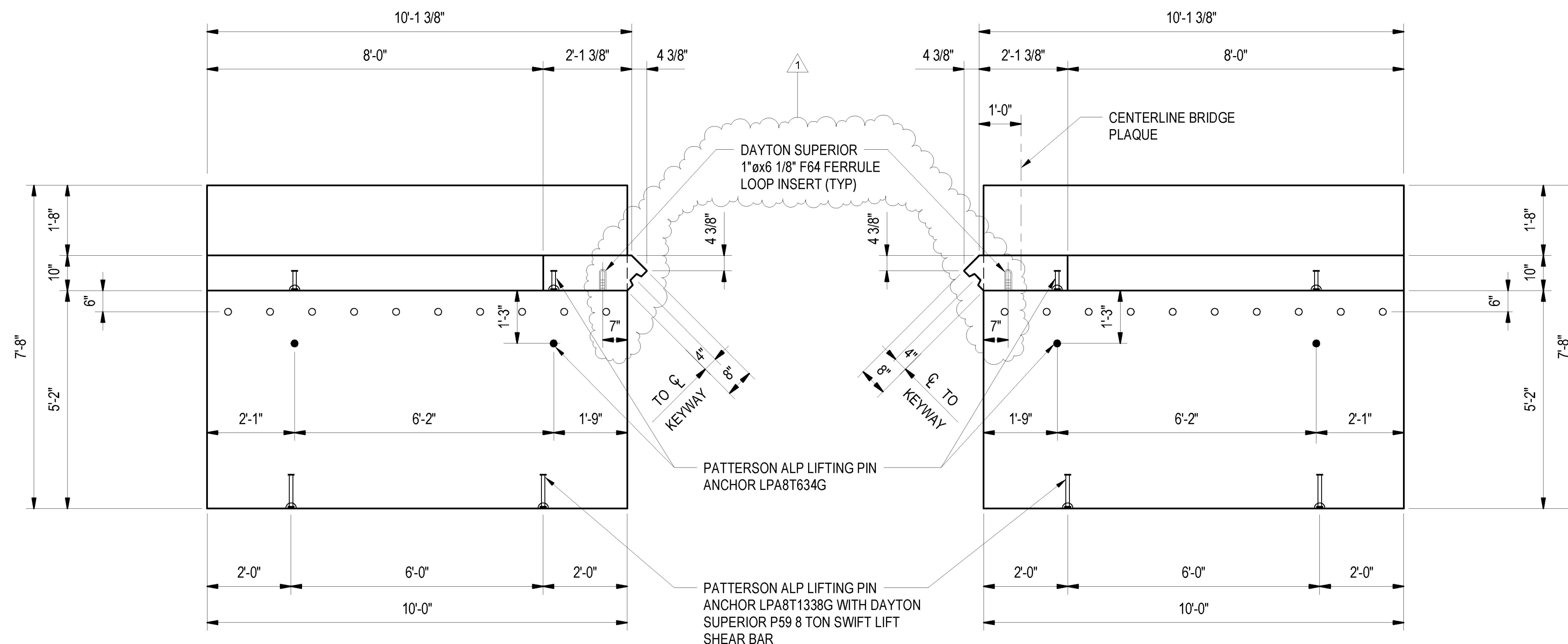
ENGINEERING VENTURES PC
 208 Flynn Avenue, Suite 2A, Burlington, VT 05401
 Tel: 802-863-6225 Fax: 802-863-6306
 85 Mechanic Street, Suite B2-2, Lebanon, NH 03756
 Tel: 603-442-9333 Fax: 603-442-9331
 www.engineeringventures.com



INLET WINGWALL PLANS, ELEVATIONS AND SECTION
 TOWN OF ST. ALBANS
 VT ROUTE 104, CULVERT #19
 ST. ALBANS, VERMONT

Designed By:	CPA
Checked By:	TWD
Drawn	JTM
Scale:	AS NOTED
Date:	04/04/2017

6
 EV Project #17022.02



Vermont Agency of Transportation
RECEIVED
 CK'D BY J. B. McCarthy OK'D BY J. B. McCarthy
 May 17, 2017
 RESUBMIT No Approved
 BY J. B. McCarthy DATE 05/18/17