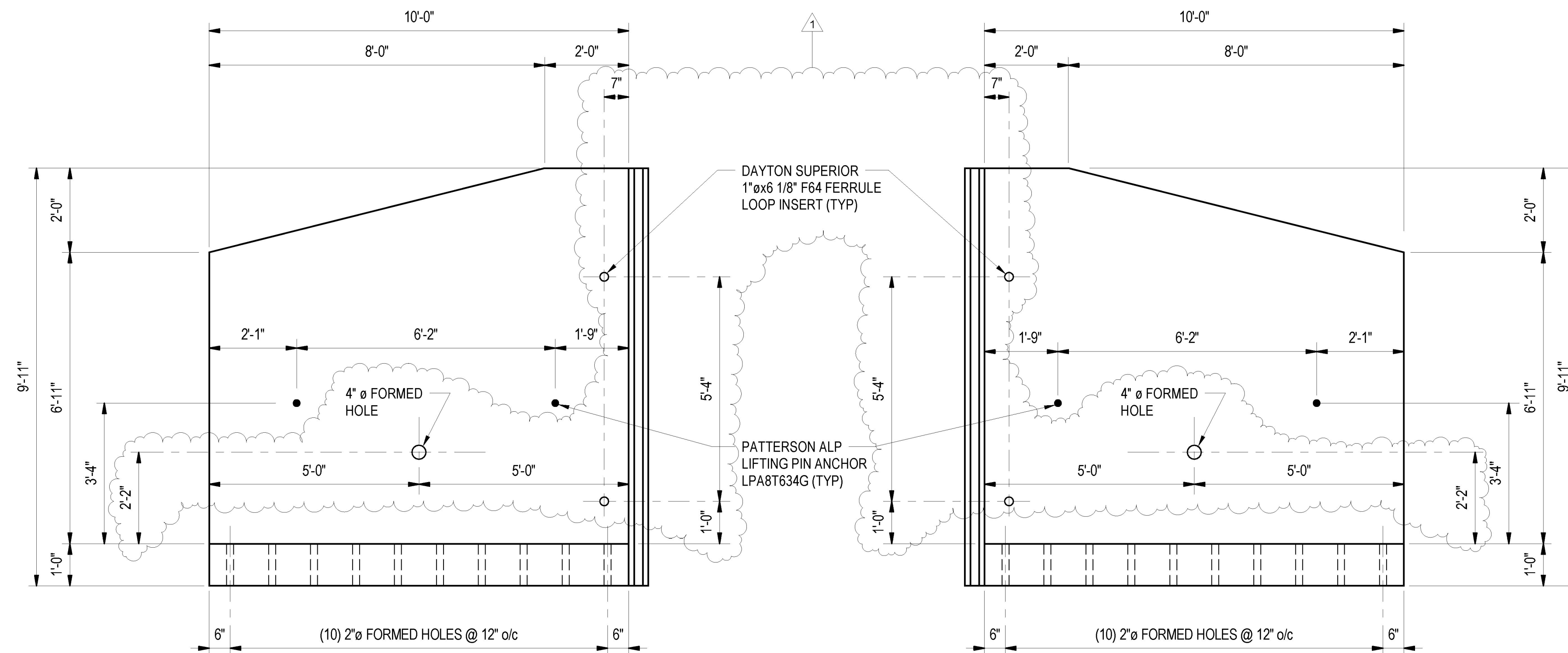


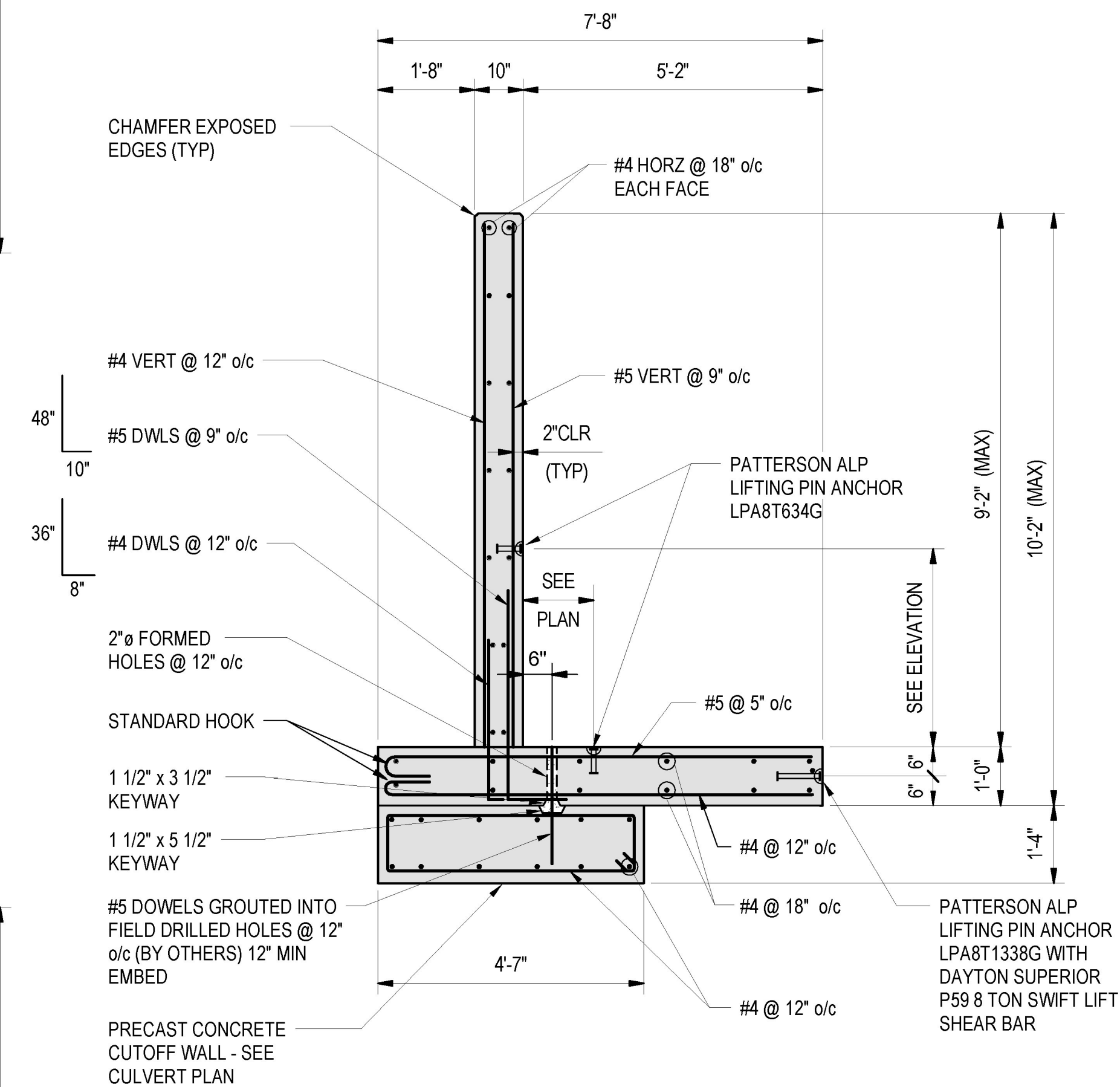
WINGWALL WW-1 PLAN
1/2" = 1'-0"

WINGWALL WW-2 PLAN
1/2" = 1'-0"



WINGWALL WW-1 ELEVATION
1/2" = 1'-0"
1. VIEW FROM BACK OF WALL.

WINGWALL WW-2 ELEVATION
1/2" = 1'-0"
1. VIEW FROM BACK OF WALL.

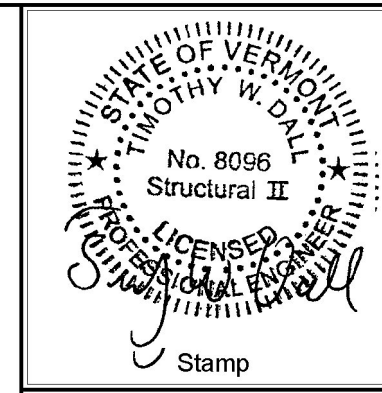


TYPICAL WINGWALL SECTION
1/2" = 1'-0"

Vermont Agency of Transportation
RECEIVED
CK'D BY J. B. McCarthy OK'D BY J. B. McCarthy

May 17, 2017

RESUBMIT No Approved
BY J. B. McCarthy DATE 05/18/17



No.	Description	Date
1	SUBMITTAL REVIEW COMMENTS	04/26/17

ENGINEERING VENTURES PC
208 Flynn Avenue, Suite 2A, Burlington, VT 05401
tel. 802-863-6225 fax. 802-863-6306
85 Mechanic Street, Suite B2-2, Lebanon, NH 03766
tel. 603-442-9333 fax. 603-442-9331
www.engineeringventures.com

CAMP
PRECAST CONCRETE
79 PRECAST ROAD
MILTON, VT 05469
PHONE: (802) 893-2401
FAX: (802) 893-1542

Sheet Title: **OUTLET WINGWALL PLANS, ELEVATIONS AND SECTION**
Project Title: **TOWN OF ST. ALBANS VT ROUTE 104, CULVERT #19**
ST. ALBANS, VERMONT

Designed By:	CPA
Checked By:	TWD
Drawn:	JTM
Scale:	AS NOTED
Date:	04/04/2017

5
EV Project #17022.02