

Date	04/26/17
Description	SUBMITTAL REVIEW COMMENTS
No.	1

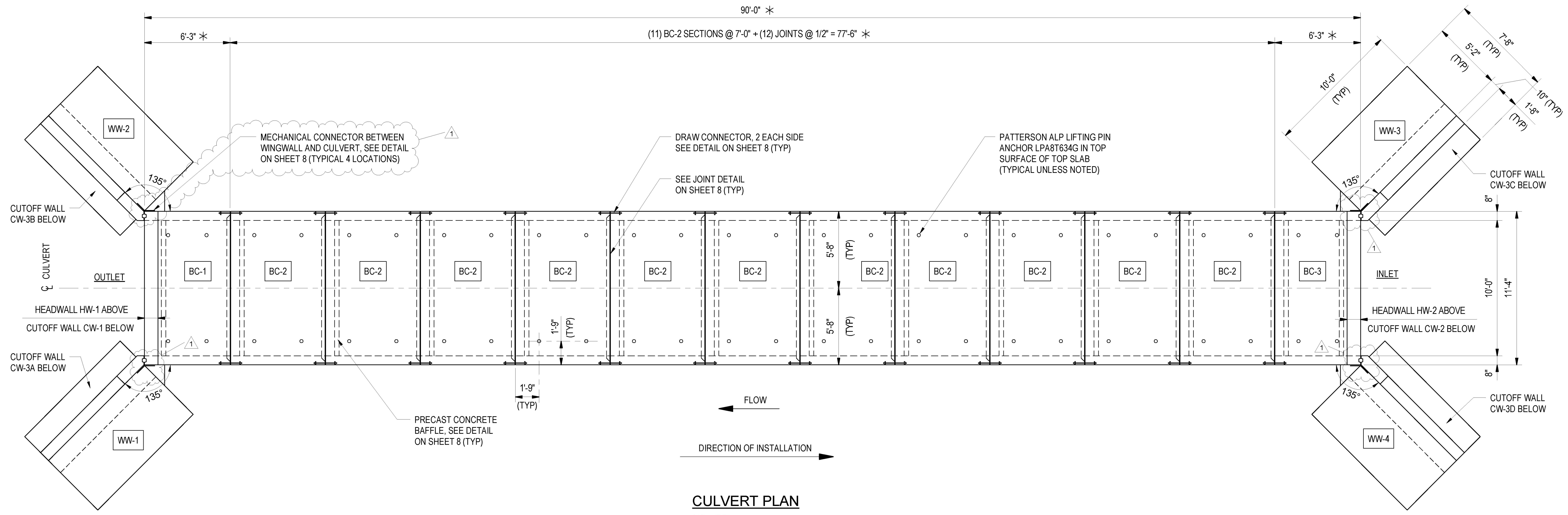
ENGINEERING VENTURES PC
 208 Flynn Avenue, Suite 2A, Burlington, VT 05401
 tel. 802-863-6225 fax. 802-863-6306
 85 Mechanic Street, Suite B2-2, Lebanon, NH 03766
 tel. 603-442-9333 fax. 603-442-9331
 www.engineeringventures.com

CAMP
 PRECAST CONCRETE
 78 PRECAST ROAD
 MILTON, VT 05469
 PHONE: (802) 893-2401
 FAX: (802) 893-1542

CULVERT PLAN AND OUTLET ELEVATION
 TOWN OF ST. ALBANS
 VT ROUTE 104, CULVERT #19
 ST. ALBANS, VERMONT

Sheet Title:
 Project Title:
 Designed By: CPA
 Checked By: TWD
 Drawn: JTM
 Scale: AS NOTED
 Date: 04/04/2017

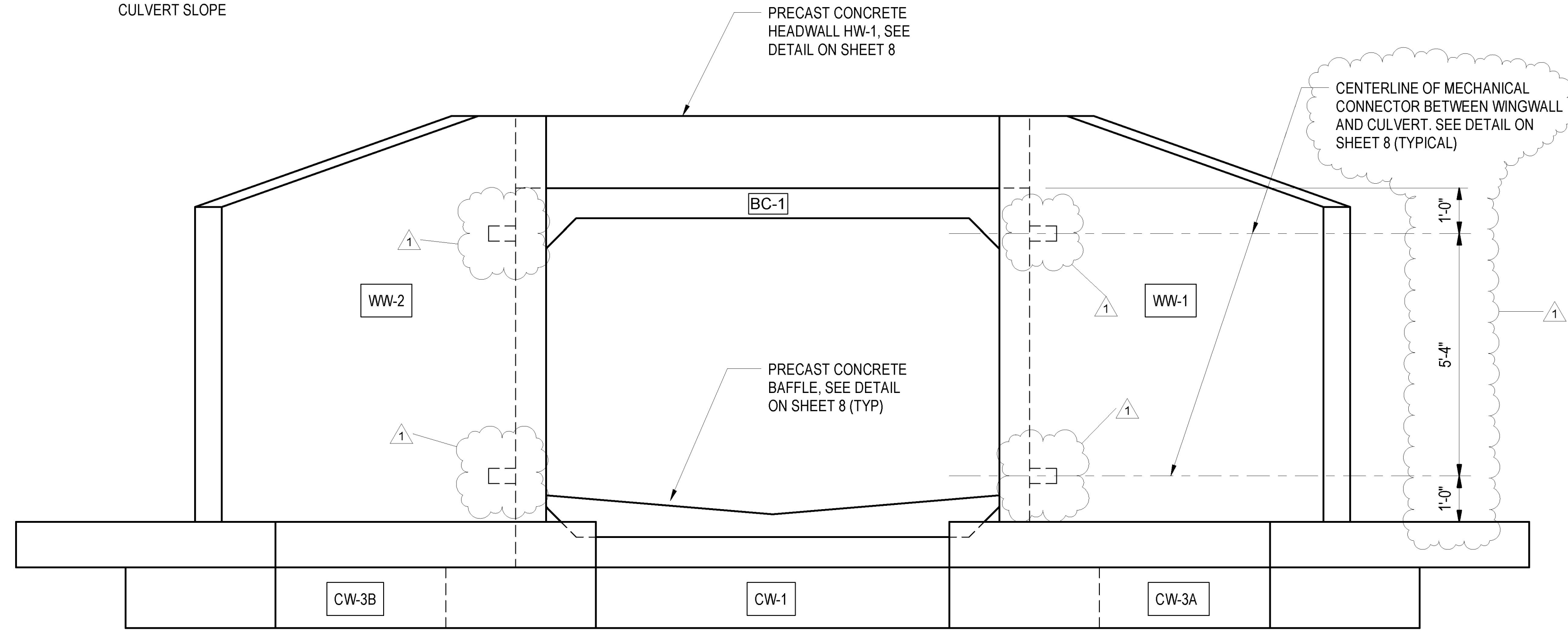
2
 EV Project #17022.02



CULVERT PLAN
 1/4" = 1'-0"
 1. * - DENOTES DIMENSION ALONG CULVERT SLOPE

TABLE OF UNITS				
MARK	QTY	CL LENGTH	VOL (CY)	WEIGHT (TONS)
BC-1**	1	6'-4 1/4"	6.71	13.59
BC-2 *	11	7'-0"	6.66	13.49
BC-3***	1	6'-1 3/4"	6.71	13.59
WW-1	1	10'-0"	5.41	10.95
WW-2	1	10'-0"	5.41	10.95
WW-3	1	10'-0"	5.49	11.11
WW-4	1	10'-0"	5.49	11.11
CW-1	1	12'-11"	0.97	1.97
CW-2	1	12'-11"	0.94	1.91
CW-3A	1	10'-0"	2.26	4.58
CW-3B	1	10'-0"	2.26	4.58
CW-3C	1	10'-0"	2.26	4.58
CW-3D	1	10'-0"	2.26	4.58

1. * INDICATES WEIGHT AND VOLUME OF ONE PRECAST BAFFLE ADDED.
 2. ** INDICATES WEIGHT AND VOLUME OF ONE PRECAST BAFFLE AND ONE HEADWALL ADDED.
 3. *** INDICATES WEIGHT AND VOLUME OF TWO PRECAST BAFFLES AND ONE HEADWALL ADDED.
 4. ALL WEIGHTS AND VOLUMES ARE APPROXIMATE.



CULVERT OUTLET ELEVATION
 1/2" = 1'-0"
 1. INLET END VIEW SIMILAR.

Vermont Agency of Transportation
RECEIVED
 CK'D BY J. B. McCarthy OK'D BY J. B. McCarthy
 May 17, 2017
 RESUBMIT No Approved
 BY J. B. McCarthy DATE 05/18/17