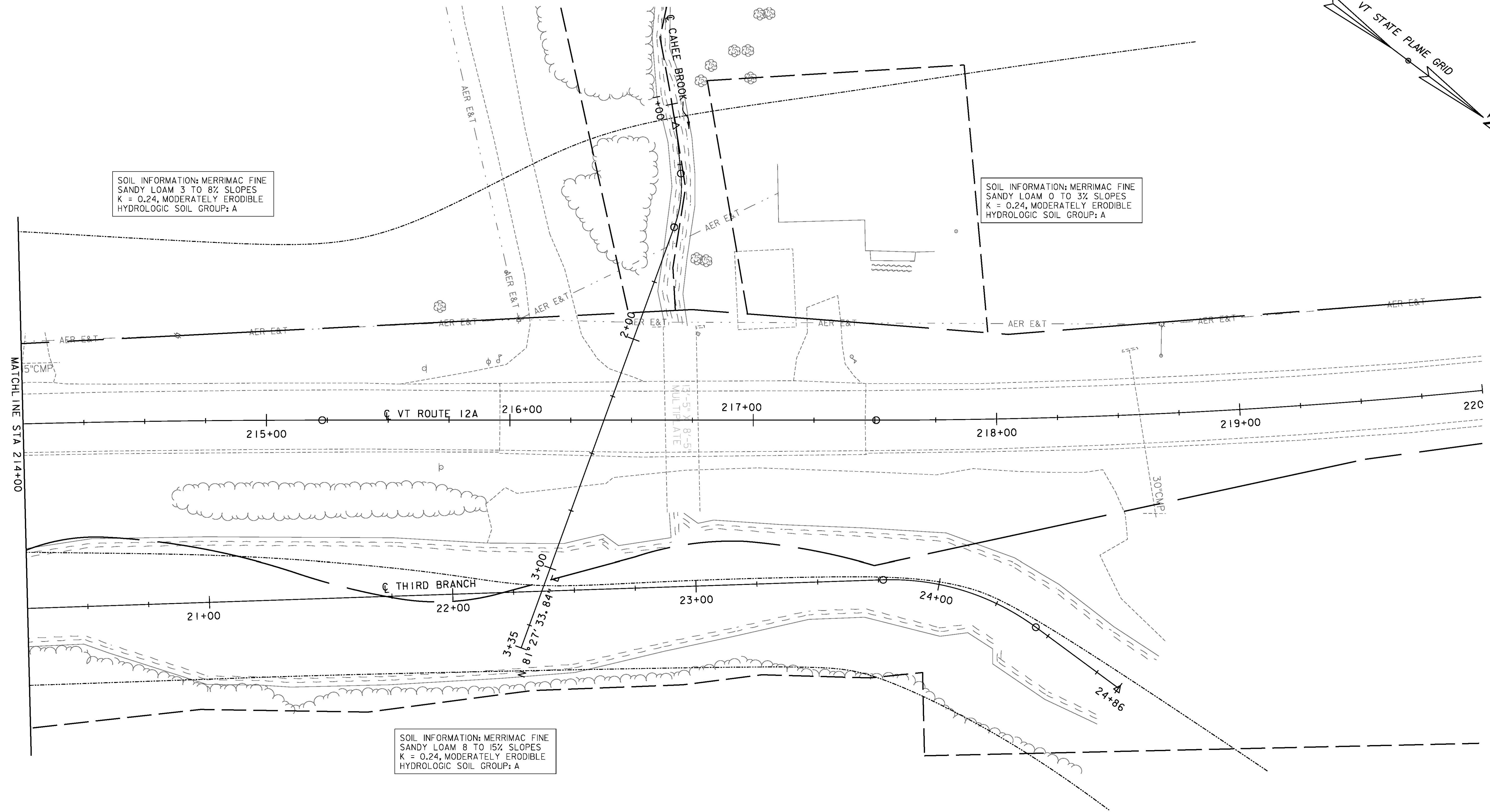


SOIL INFORMATION: MERRIMAC FINE SANDY LOAM 3 TO 8% SLOPES
K = 0.24, MODERATELY ERODIBLE
HYDROLOGIC SOIL GROUP: A

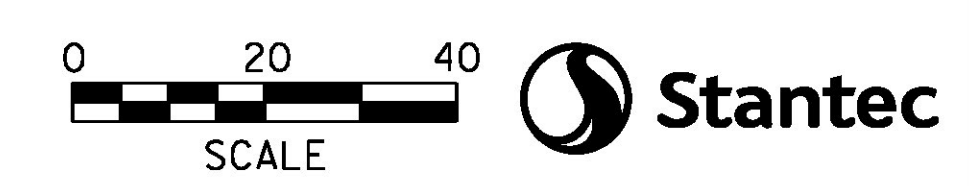
SOIL INFORMATION: MERRIMAC FINE SANDY LOAM 0 TO 3% SLOPES
K = 0.24, MODERATELY ERODIBLE
HYDROLOGIC SOIL GROUP: A

SOIL INFORMATION: MERRIMAC FINE SANDY LOAM 8 TO 15% SLOPES
K = 0.24, MODERATELY ERODIBLE
HYDROLOGIC SOIL GROUP: A



MATCHLINE STA 214+00

- NOTES:
1. SEE SHEET 10 FOR EPSC LAYOUT PLAN SYMBOLOGY.
 2. RE-VEGETATION ON TOP OF STONE FILL SHALL BE GRUBBING MATERIAL, SEED AND MULCH. ALL OTHER AREAS TO BE TOPSOIL, SEED AND MULCH.



PROJECT NAME:	BRAINTREE	PLOT DATE:	1/10/2014
PROJECT NUMBER:	ER STP 0187(12)	DRAWN BY:	I. MAYNARD
FILE NAME:	z12c526eroBdr.dgn	CHECKED BY:	M. FOISY
DESIGNED BY:	I. MAYNARD	SHEET	64 OF 72
EPSC EXISTING LAYOUT SHEET 3			