

GPS/NGS CONTROL POINTS

RANDOLPH CORS ARP

PID DJ8951
 N = 524583.45
 E = 1613157.07
 ELLIP HEIGHT = 1329.21

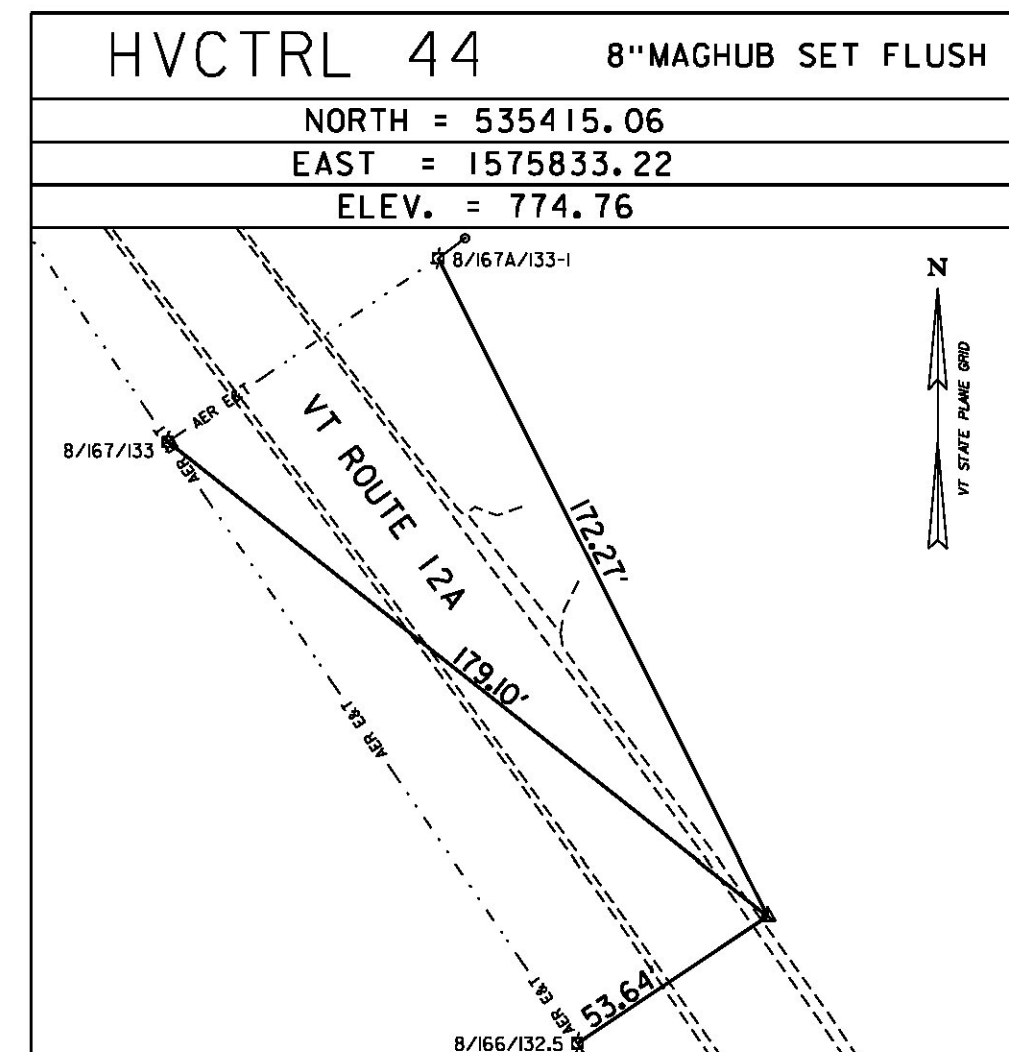
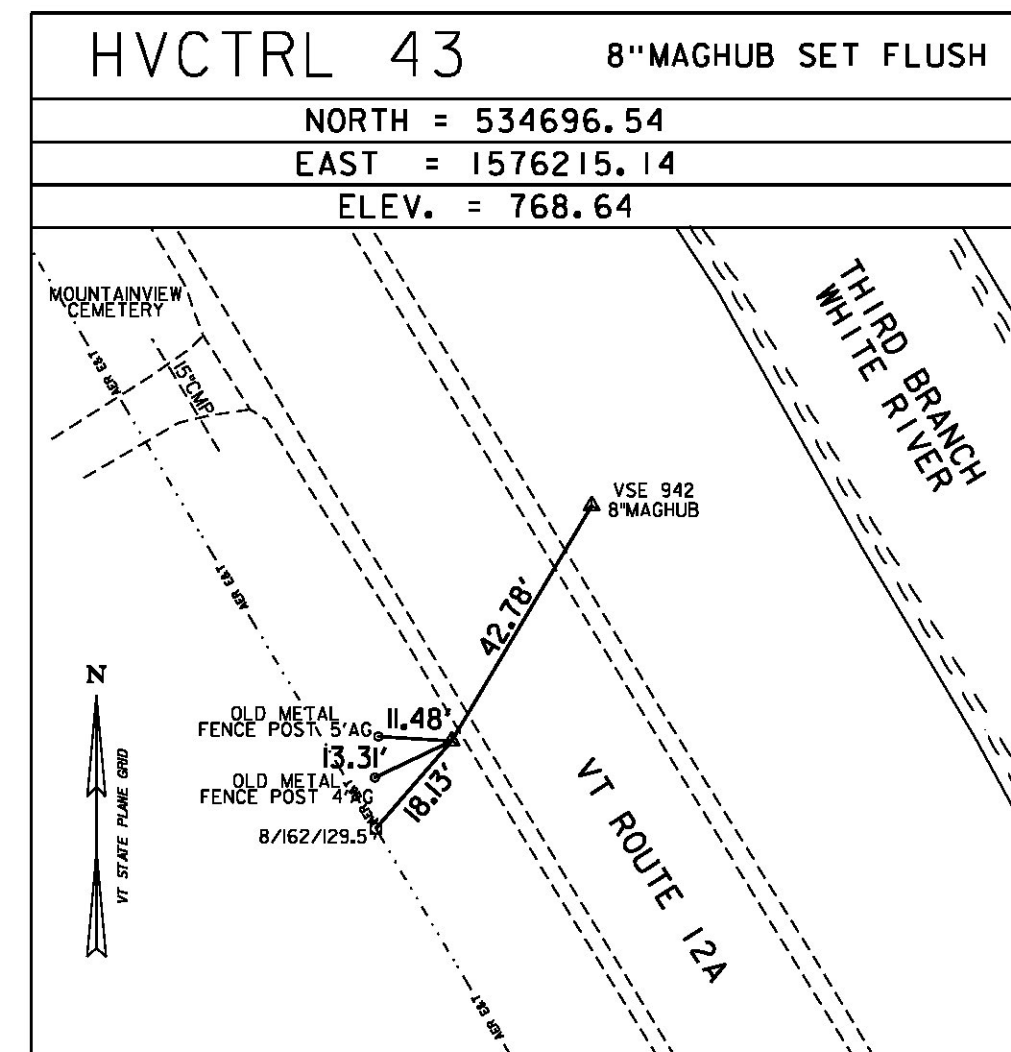
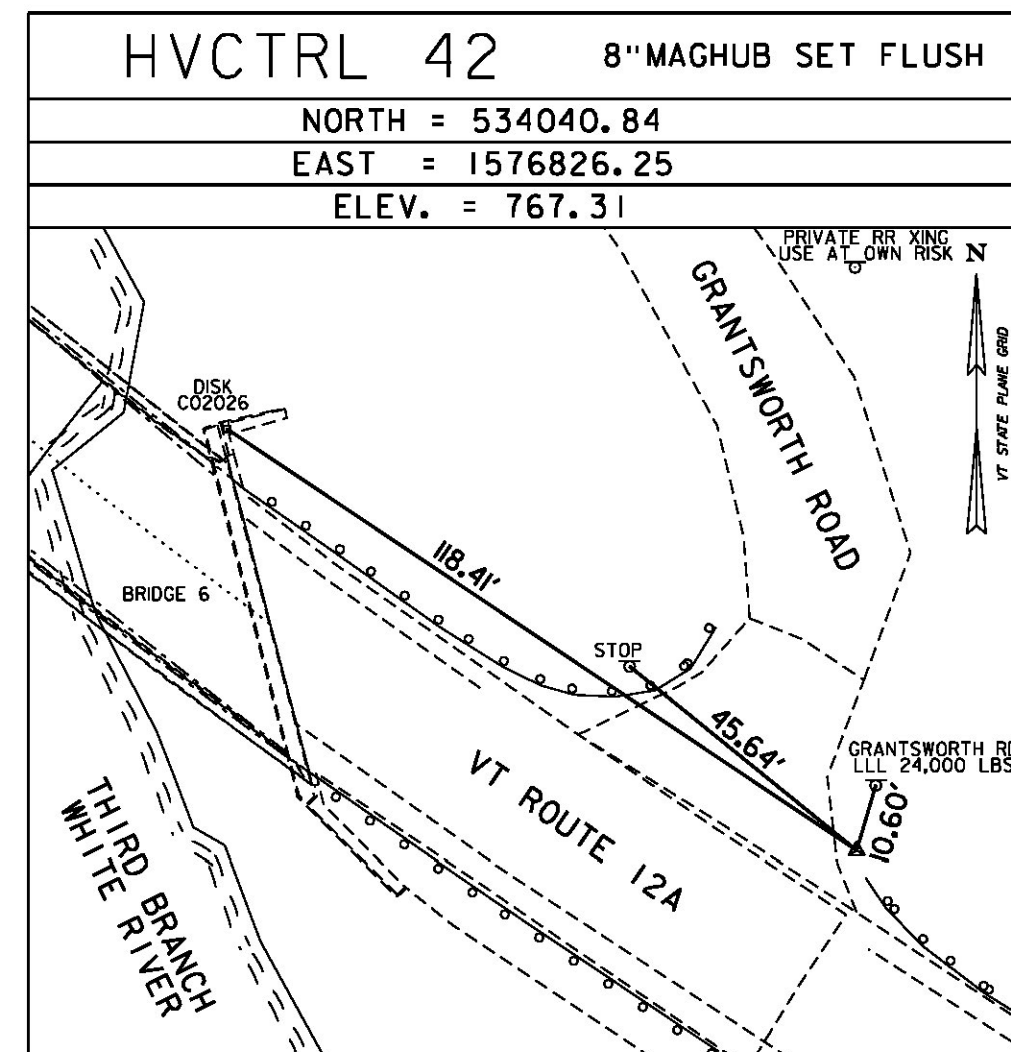
VTAT DISK C02026

PID DM1728
 N = 534106.71
 E = 1576727.85
 ELEV = 766.82

STATION IS A GPS CONTINUOUSLY OPERATING REFERENCE STATION. STATION IS THE ANTENNA REFERENCE POINT OF THE GPS ANTENNA. THE ANTENNA IS MOUNTED ON THE ROOF OF GREEN HALL, ON THE CAMPUS OF VERMONT TECHNICAL COLLEGE, RANDOLPH, VT. THE MONUMENT IS ATTACHED TO A TWO STORY CONCRETE/BRICK BUILDING WITH A 10 FT CONCRETE FOUNDATION BUILT IN 1969. MAST IS A 1.75 INCH DIA GALV PIPE THAT IS 108 INCHES LONG. THE MAST ATTACHED TO A STEEL MOUNTING FRAME WITH THREE ATTACHMENTS CONSISTING OF 3/8 INCH SS THROUGH BOLTS. THE MOUNTING FRAME IS ATTACHED TO THE BUILDING USING 8 ATTACHMENT POINTS. THE TOP 2 AND BOTTOM 2 ARE 1/2 INCH SS BOLTS SECURED TO THE BRICK OR CONC WITH LEAD ANCHORS. THE MIDDLE 4 ATTACHMENTS ARE THROUGH BOLTED AND CONSIST OF 1/2 INCH SS THREADED ROD AND NUTS.

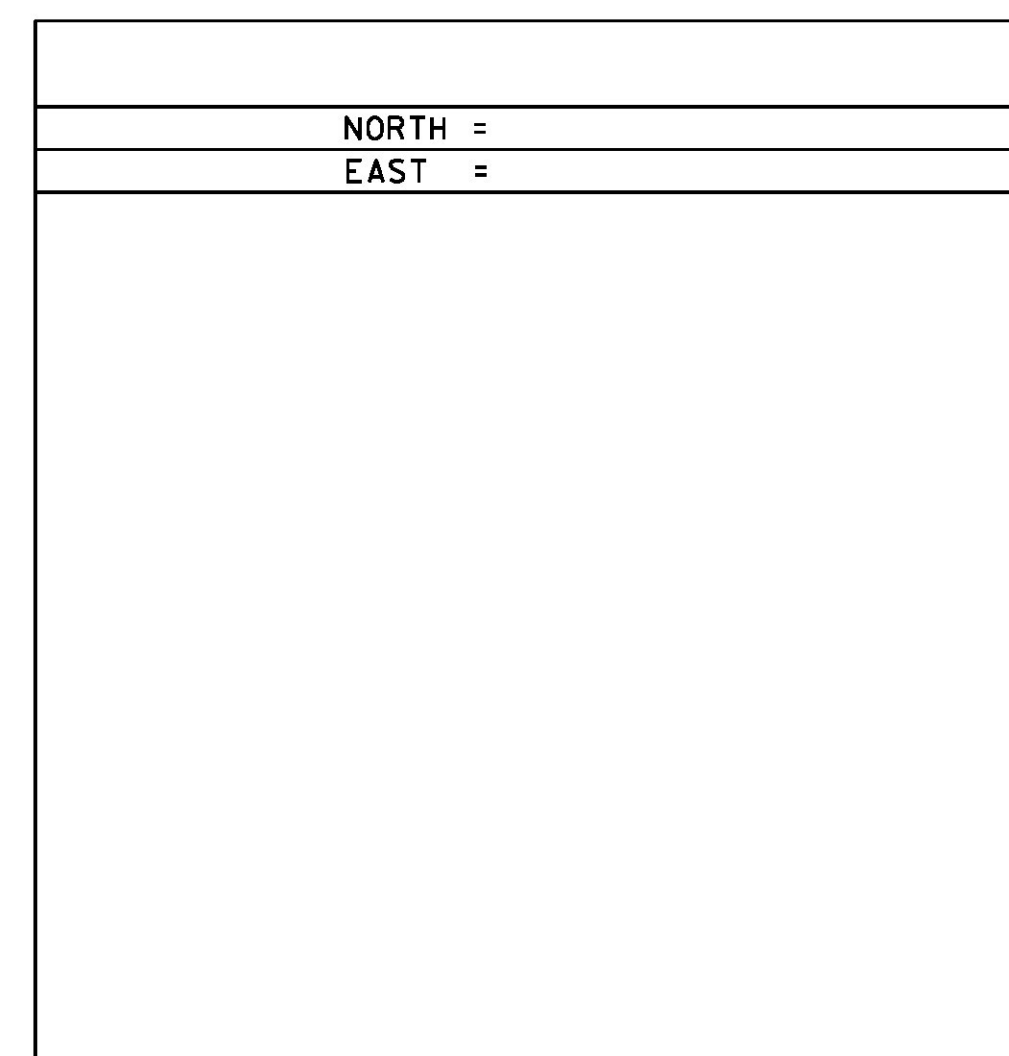
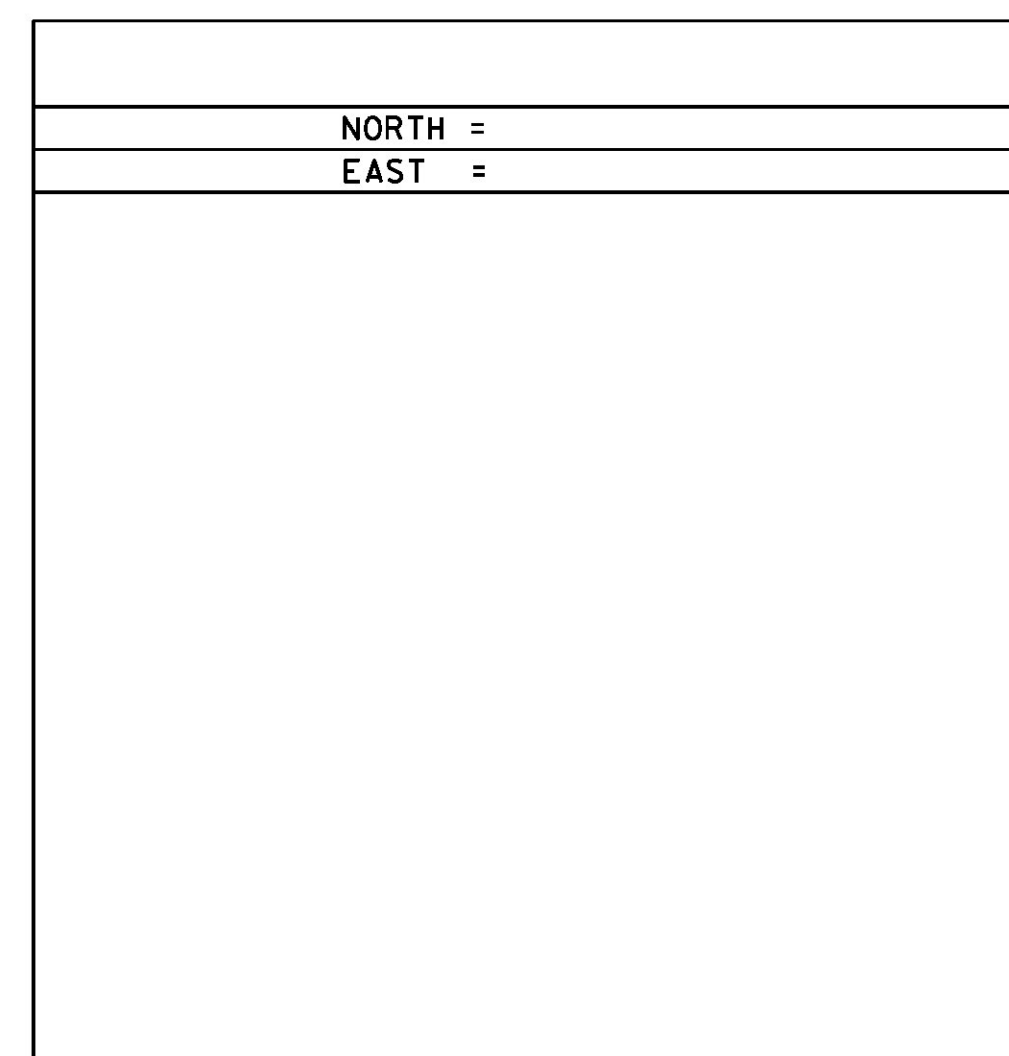
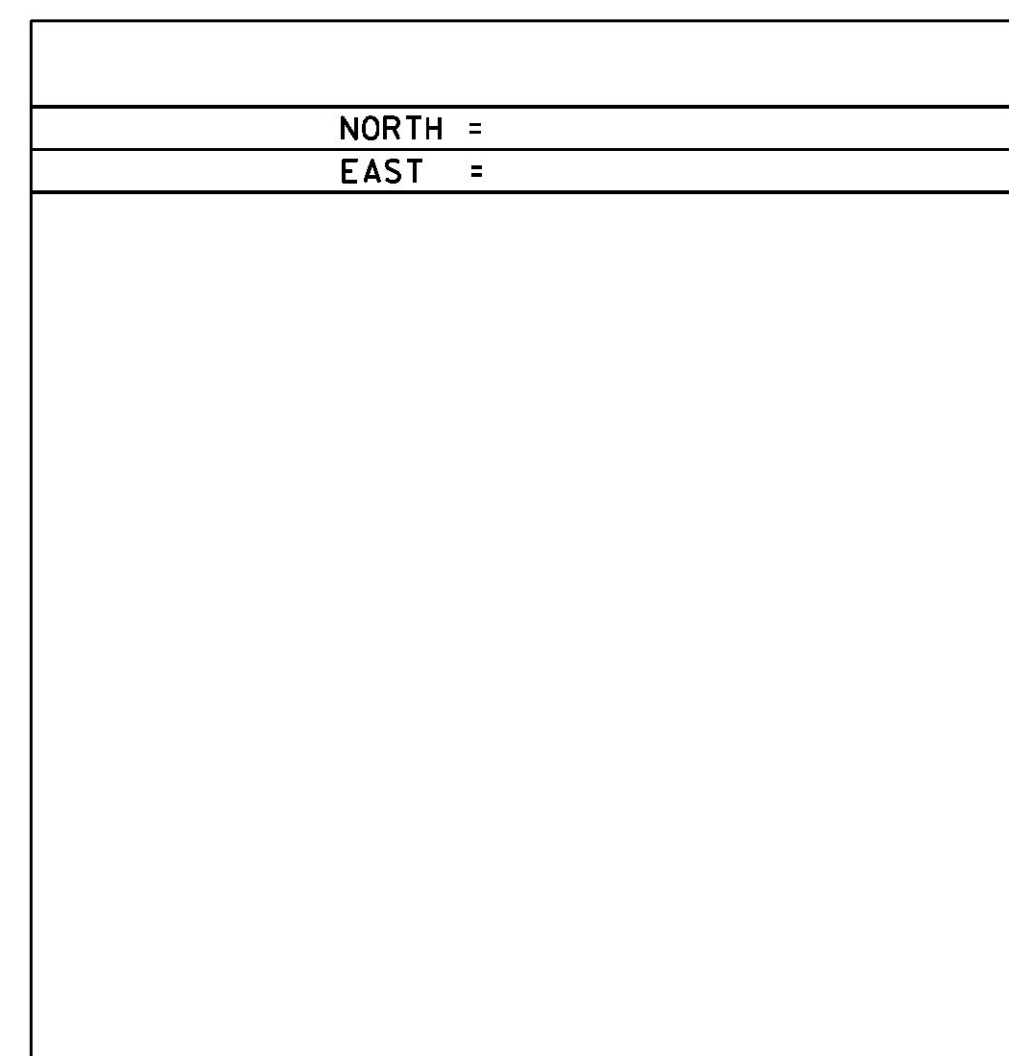
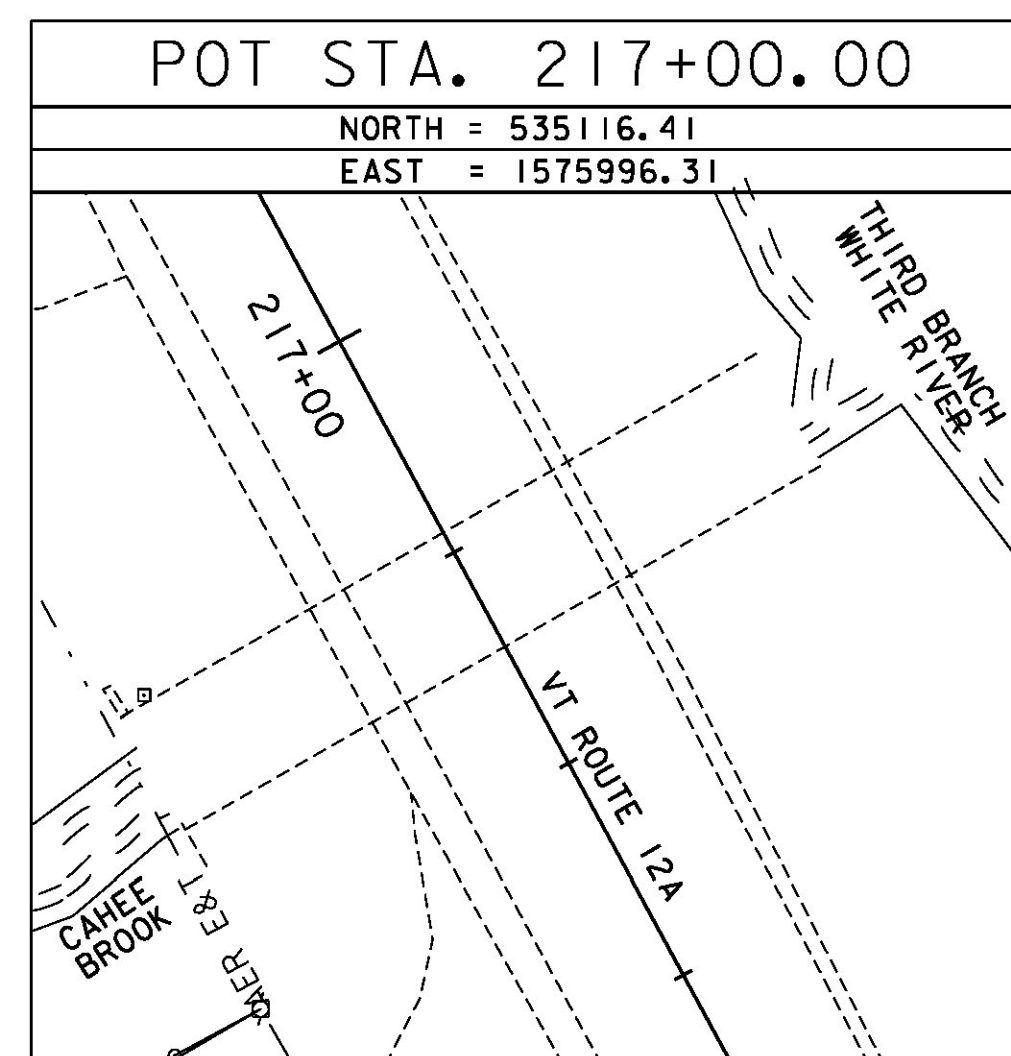
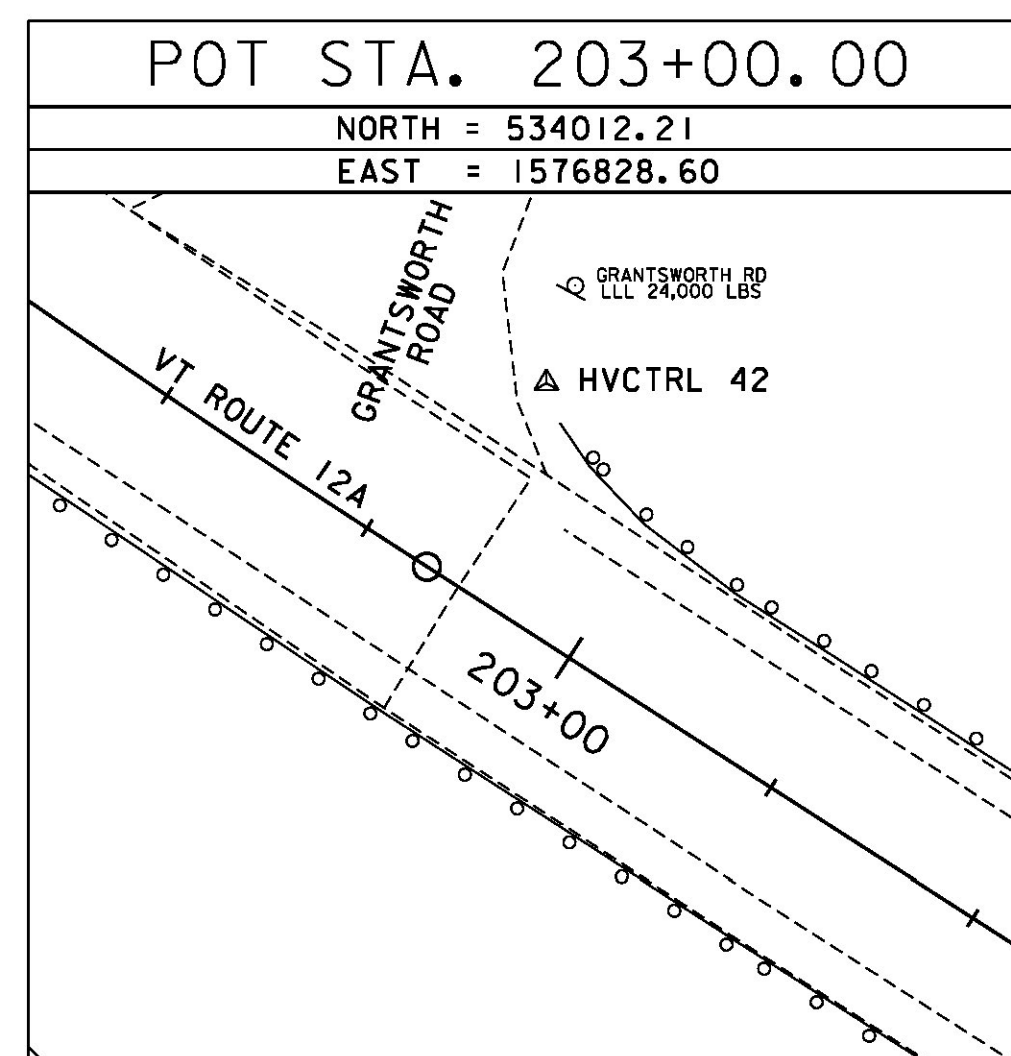
TO REACH FROM THE INTERSECTION OF VT ROUTE 12 AND VT ROUTE 12A IN RANDOLPH GO NORTH ALONG VT ROUTE 12A FOR 4.7 MI (7.6 KM) TO THE VT ROUTE 12A CROSSING OF THE NEW ENGLAND CENTRAL RAILROAD. CONTINUE STRAIGHT AHEAD AND GO NORTH ALONG VT ROUTE 12A FOR 0.5 MI (0.8 KM) TO THE SOUTH END OF THE VT ROUTE 12A BRIDGE OVER THE THIRD BRANCH OF THE WHITE RIVER AND THE SITE OF THE MARK ON THE RIGHT, SET IN THE TOP OF THE WING WALL AT THE SOUTHEAST CORNER OF THE BRIDGE, DIRECTLY ABOVE THE BRIDGE DATE PLAQUE. IT IS ABOUT 35 M (114.8 FT) NORTH OF THE INTERSECTION OF VT ROUTE 12A AND GRANTSWORTH ROAD RIGHT AND 0.65 MI (1.0 KM) SOUTH OF THE INTERSECTION OF VT ROUTE 12A AND NORTH ROAD IN WEST BRAINTREE VILLAGE. IT IS 6.3 M (20.7 FT) EAST OF AND ABOUT 0.3 M (1.0 FT) LOWER THE CENTERLINE OF VT ROUTE 12A, 1.3 M (4.3 FT) EAST OF THE EAST EDGE OF THE BRIDGE CURB, 0.3 M (1.0 FT) SOUTHEAST OF THE NORTHWEST FACE OF THE ABUTMENT AND 0.3 M (1.0 FT) SOUTHWEST OF THE NORTHEAST EDGE OF THE ABUTMENT.

TRAVERSE TIES



■ MAIN TRAVERSE COMPLETED: FEBRUARY 1, 2013 BY VSE, M. YEFCHAK-PC, T. YEFCHAK

BASELINE TIES



DATUM
 VERTICAL NAVD 88 FT
 HORIZONTAL NAD 83(2011)SFT
 ADJUSTMENT LSQ

PROJECT NAME: BRAINTREE
 PROJECT NUMBER: ER STP 0187(12)

FILE NAME: z12c526frm.dgn
 PROJECT LEADER: VTRANS
 DESIGNED BY: VTRANS
 TIE SHEET

PLOT DATE: 1/10/2014
 DRAWN BY: VTRANS
 CHECKED BY: VTRANS
 SHEET 15 OF 72

