

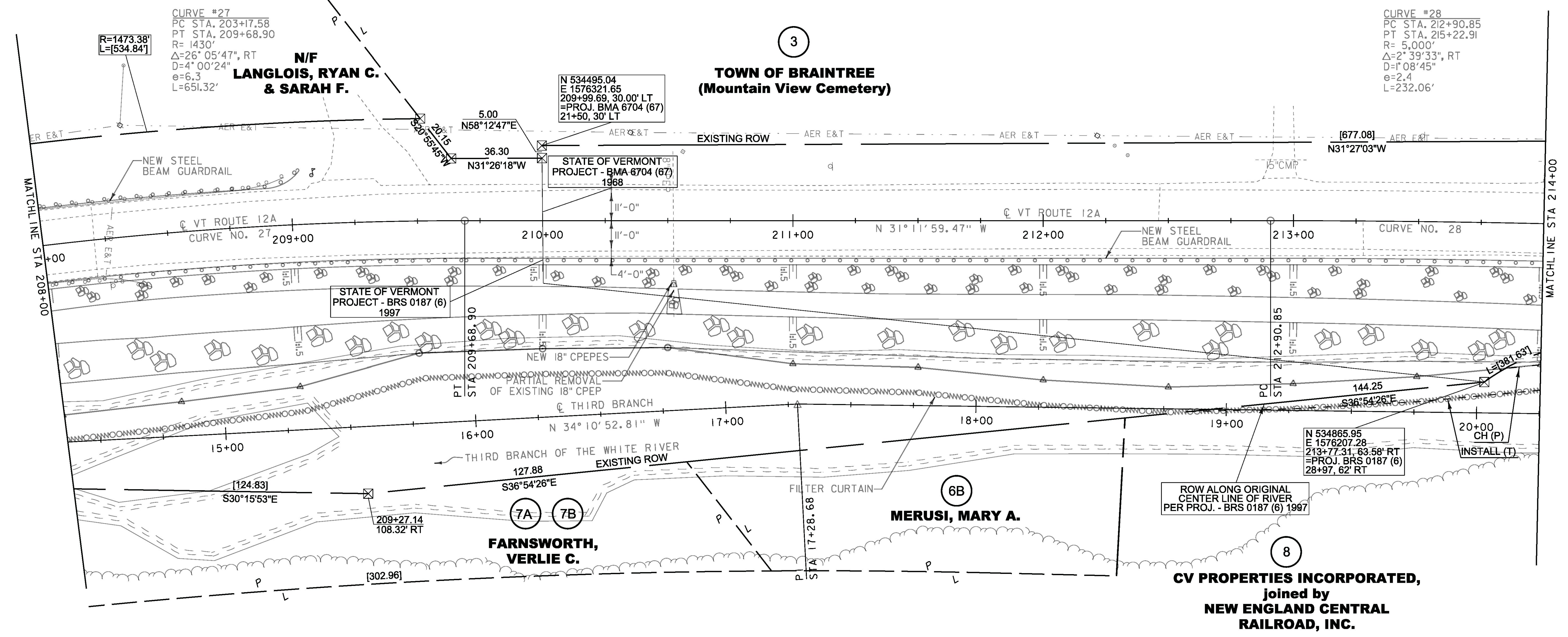
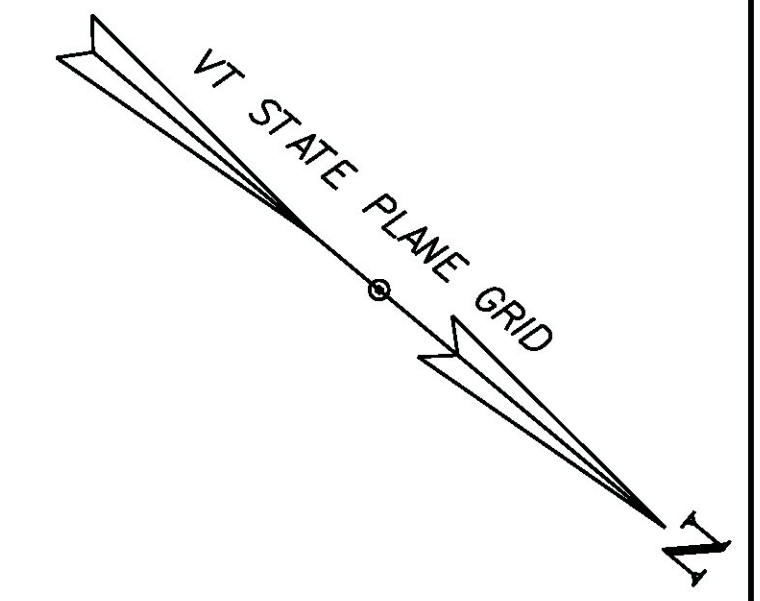
617.10 RELOCATE MAILBOX, SINGLE SUPPORT
STA. 209+08, LT

675.50 REMOVING SIGNS
AS SHOWN - I

621.20 STEEL BEAM GUARDRAIL, GALVANIZED
STA. 208+00.00 TO 209+03.07, LT
STA. 208+00.00 TO 214+00.00, RT

621.60 ANCHOR FOR STEEL BEAM RAIL
STA. 209+03.07, LT

621.80 REMOVAL AND DISPOSAL OF GUARDRAIL
STA. 208+00.00 TO 208+99.48, LT
STA. 208+00.00 TO 208+42.78, RT



LEGEND

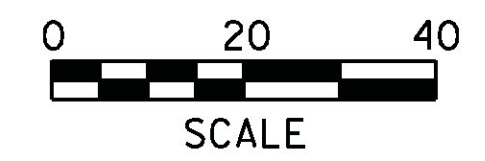
	= STONE FILL TYPE IV
	= STONE FILL TYPE II WITH GRUBBING
	= CUT LIMIT
	= FILL LIMIT
	= EXISTING GUARDRAIL
	= PROPOSED GUARDRAIL

SIGN LEGEND

R	= REMOVE
S	= SALVAGE
RET	= RETAIN

LINES SHOWN ON THIS PLAN AS EXISTING PROPERTY LINES P/L ARE BELIEVED TO BE ACCURATE BUT SHOULD NOT BE RELIED UPON FOR PURPOSES UNRELATED TO THE STATE OF VERMONT'S ACQUISITION OF LAND AND RIGHTS FOR THIS PROJECT.

FOR R.O.W. USE ONLY



PROJECT NAME:	BRAINTREE
PROJECT NUMBER:	ER STP 0187(12)
FILE NAME:	r12c526lay2.dgn
PROJECT LEADER:	P. LIBBY
DESIGNED BY:	STANTEC
ROW LAYOUT SHEET 2 OF 3	
PLOT DATE:	14-OCT-2013
DRAWN BY:	A. EGIZI
CHECKED BY:	E. PIERCE
SHEET	13 OF 72