

STONE FILL, TYPE II
 STA. 11+25 - STA. 14+24 RT
 STONE FILL, TYPE IV
 STA. 11+25 - STA. 14+24 RT
 GRUBBING MATERIAL (12")
 STA. 11+25 - STA. 14+24 RT

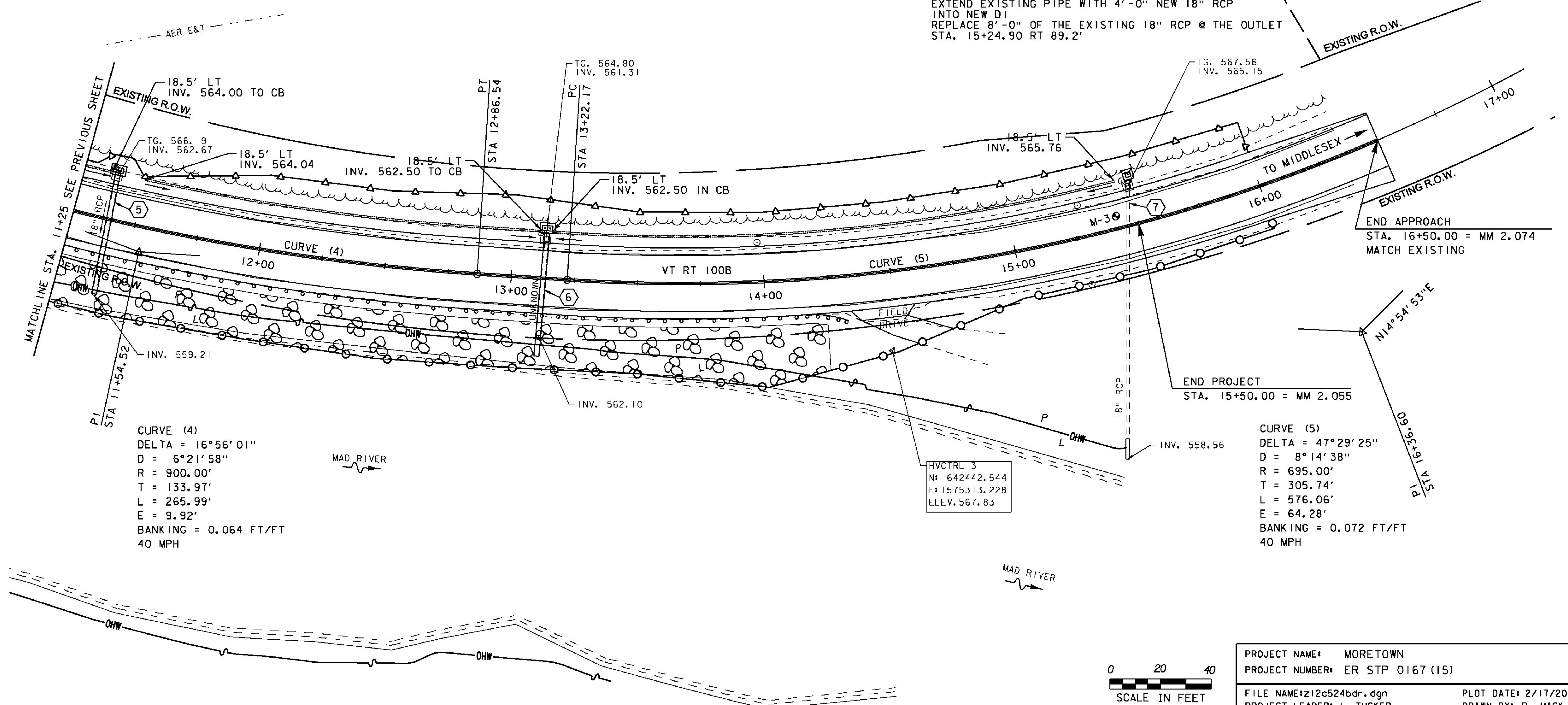
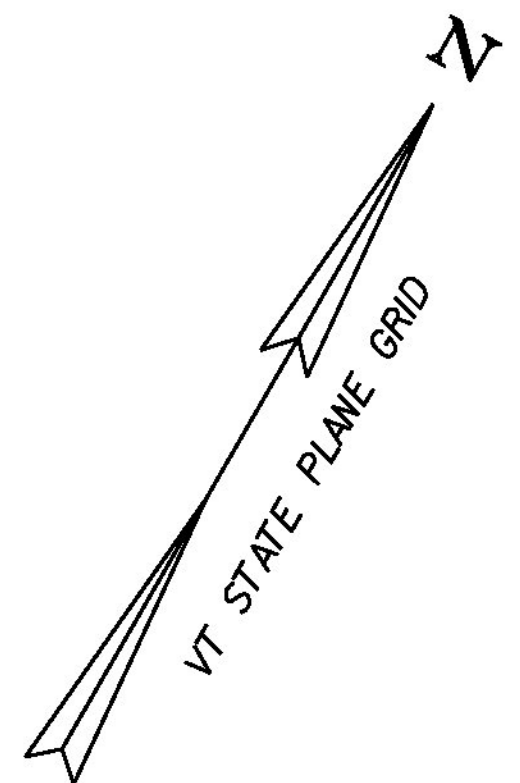
STEEL BEAM GUARDRAIL, GALVANIZED
 STA. 11+25 - STA. 14+32 RT
 REMOVAL AND DISPOSAL OF GUARDRAIL
 STA. 11+25 - STA. 14+37 RT
 CONSTRUCT GRAVEL DRIVES
 W/ 4'-0" PAVED APRON
 STA. 14+33.00 - STA. 14+58.00 RT - 25'-0"
 MATCH EXISTING DRIVE AT LIMIT OF WORK

TEMPORARY 4 INCH WHITE LINE, PAINT
 STA. 11+25 - STA. 16+00 (SOLID LT & RT)
 TEMPORARY 4 INCH YELLOW LINE, PAINT
 STA. 11+25 - STA. 16+00 (SOLID LT & RT)
 DURABLE 4 INCH WHITE LINE (SEE OPTION ITEMS)
 STA. 11+25 - STA. 16+00 (SOLID LT & RT)
 DURABLE 4 INCH YELLOW LINE (SEE OPTION ITEMS)
 STA. 11+25 - STA. 16+00 (SOLID LT & RT)
 6 INCH UNDERDRAIN PIPE
 STA. 11+25 - STA. 11+38 LT
 STA. 11+50 - STA. 13+13 LT
 STA. 13+13 - STA. 15+45 LT
 SPECIAL PROVISION (CORING CONCRETE)
 STA. 11+38 LT
 STA. 13+13 LT (2)

⑤ STA. 11+38.71 LT 17.5' REMOVE EXISTING DI
 STA. 11+38.68 LT 19.8', INSTALL 4'X6'
 PRECAST DI WITH RIM = 566.16'
 REPLACE EXISTING 18" RCP WITH
 NEW 24" CPEP FROM NEW DI TO
 STA. 11+40.25 RT 30.0'
 LENGTH = 48'-0"
 INV. @ DI = 563.16'
 INV. OUT = 561.53'
 ASKEW ANGLE = 88.175° RT

⑥ STA. 13+12.65 LT 15.6' REMOVE EXISTING DI
 STA. 13+13.14 LT 19.8', INSTALL 4'X6'
 PRECAST DI WITH RIM = 565.13'
 REPLACE EXISTING PIPE WITH
 NEW 24" CPEP FROM NEW DI TO
 STA. 13+12.00 RT 30.9'
 LENGTH = 48'-0"
 INV. @ DI = 562.13'
 INV. OUT = 559.73'
 ASKEW ANGLE = 88.7046° LT

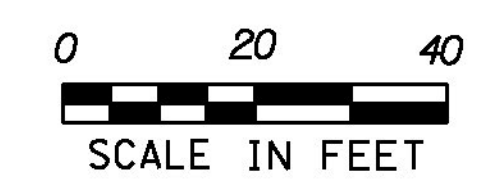
⑦ STA. 15+49.62 LT 15.3' REMOVE EXISTING DI
 STA. 15+50.82 LT 19.7', INSTALL NEW PRECAST DI
 WITH RIM = 567.77'
 EXTEND EXISTING PIPE WITH 4'-0" NEW 18" RCP
 INTO NEW DI
 REPLACE 8'-0" OF THE EXISTING 18" RCP @ THE OUTLET
 STA. 15+24.90 RT 89.2'



CURVE (4)
 DELTA = 16°56'01"
 D = 6°21'58"
 R = 900.00'
 T = 133.97'
 L = 265.99'
 E = 9.92'
 BANKING = 0.064 FT/FT
 40 MPH

CURVE (5)
 DELTA = 47°29'25"
 D = 8°14'38"
 R = 695.00'
 T = 305.74'
 L = 576.06'
 E = 64.28'
 BANKING = 0.072 FT/FT
 40 MPH

HVCTRL 3
 N: 642442.544
 E: 157513.228
 ELEV. 567.83



PROJECT NAME: MORETOWN	PLOT DATE: 2/17/2015
PROJECT NUMBER: ER STP 0167 (15)	DRAWN BY: B. MACK
FILE NAME: z12c524bdr.dgn	CHECKED BY: J. TUCKER
PROJECT LEADER: J. TUCKER	SHEET 26 OF 57
DESIGNED BY: B. BRESLEND	
PLAN SHEET 3	