

**GEOTEXTILE UNDER STONE FILL**  
 STA. 6+75 - STA. 6+95 LT

**STONE FILL, TYPE II**  
 STA. 5+50 - STA. 11+25 RT  
 STA. 6+75 - STA. 6+95 LT

**STONE FILL, TYPE IV**  
 STA. 5+50 - STA. 11+25 RT

**STEEL BEAM GUARDRAIL, GALVANIZED**  
 STA. 5+50 - STA. 11+25 RT

**REMOVAL AND DISPOSAL OF GUARDRAIL**  
 STA. 5+50 - STA. 11+25 RT

**REMOVING SIGNS**  
 AS SHOWN - 2

**GRUBBING MATERIAL (12")**  
 STA. 5+50 - STA. 11+25 RT

**GRUBBING MATERIAL (6")**  
 STA. 6+75 - STA. 6+95 LT

**TEMPORARY 4 INCH WHITE LINE, PAINT**  
 STA. 5+50 - STA. 11+25 (SOLID LT & RT)

**TEMPORARY 4 INCH YELLOW LINE, PAINT**  
 STA. 5+50 - STA. 11+25 (SOLID LT & RT)

**DURABLE 4 INCH WHITE LINE (SEE OPTION ITEMS)**  
 STA. 5+50 - STA. 11+25 (SOLID LT & RT)

**DURABLE 4 INCH YELLOW LINE (SEE OPTION ITEMS)**  
 STA. 5+50 - STA. 11+25 (SOLID LT & RT)

**6 INCH UNDERDRAIN PIPE**  
 STA. 5+50 - STA. 6+85 LT  
 STA. 6+95 - STA. 8+90 LT  
 STA. 9+10 - STA. 11+25 LT

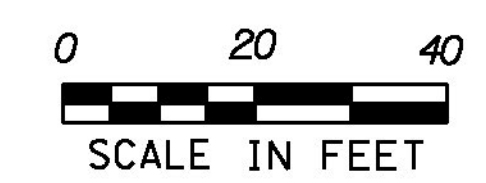
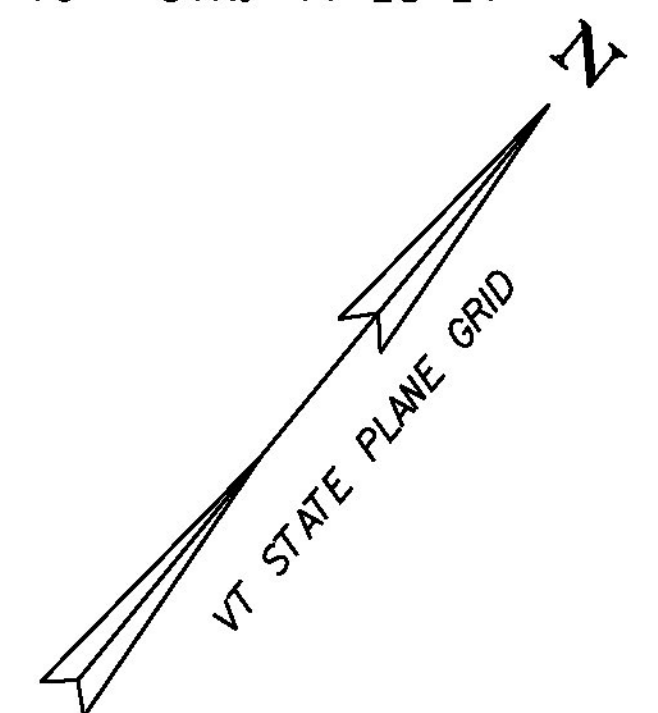
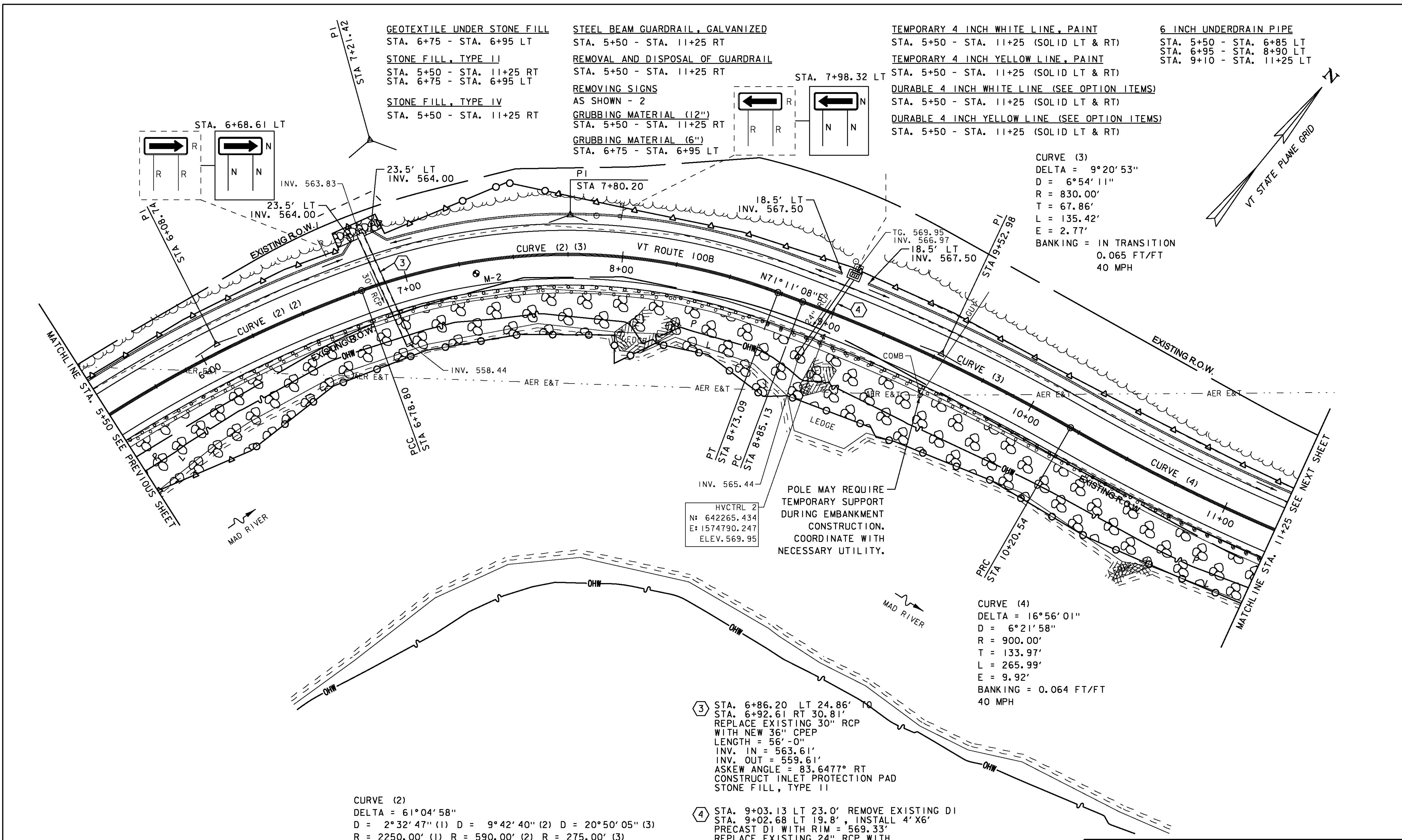
**CURVE (3)**  
 DELTA = 9°20'53"  
 D = 6°54'11"  
 R = 830.00'  
 T = 67.86'  
 L = 135.42'  
 E = 2.77'  
 BANKING = IN TRANSITION  
 0.065 FT/FT  
 40 MPH

**CURVE (4)**  
 DELTA = 16°56'01"  
 D = 6°21'58"  
 R = 900.00'  
 T = 133.97'  
 L = 265.99'  
 E = 9.92'  
 BANKING = 0.064 FT/FT  
 40 MPH

③ STA. 6+86.20 LT 24.86' TO  
 STA. 6+92.61 RT 30.81'  
 REPLACE EXISTING 30" RCP  
 WITH NEW 36" CPEP  
 LENGTH = 56'-0"  
 INV. IN = 563.61'  
 INV. OUT = 559.61'  
 ASKEW ANGLE = 83.6477° RT  
 CONSTRUCT INLET PROTECTION PAD  
 STONE FILL, TYPE II

④ STA. 9+03.13 LT 23.0' REMOVE EXISTING DI  
 STA. 9+02.68 LT 19.8', INSTALL 4'X6'  
 PRECAST DI WITH RIM = 569.33'  
 REPLACE EXISTING 24" RCP WITH  
 NEW 24" CPEP FROM NEW PRECAST DI TO  
 STA. 8+91.80 RT 25.3'  
 LENGTH = 44'-0"  
 INV. DI = 566.33'  
 INV. OUT = 565.39'  
 ASKEW ANGLE = 76.5266° LT

**CURVE (2)**  
 DELTA = 61°04'58"  
 D = 2°32'47" (1) D = 9°42'40" (2) D = 20°50'05" (3)  
 R = 2250.00' (1) R = 590.00' (2) R = 275.00' (3)  
 T = 455.58' (1) T = 199.13' (2)  
 L = 272.17' (1) L = 140.79' (2) L = 194.29' (3)  
 E = 45.66'  
 BANKING = 0.034 FT/FT (1) 0.076 FT/FT (2) 0.077 FT/FT (3)  
 40 MPH 40 MPH 30MPH



PROJECT NAME: MORETOWN	PLOT DATE: 2/17/2015
PROJECT NUMBER: ER STP 0167 (15)	DRAWN BY: B. MACK
FILE NAME: z12c524bdr.dgn	CHECKED BY: J. TUCKER
DESIGNED BY: B. BRESLEND	SHEET 25 OF 57
PLAN SHEET 2	