

GEOTEXTILE UNDER STONE FILL

STA. 2+33 - STA. 2+58 LT
STA. 4+76 - STA. 4+97 LT

STONE FILL, TYPE II

STA. 2+33 - STA. 5+50 RT
STA. 2+33 - STA. 2+58 LT
STA. 4+76 - STA. 4+97 LT

STONE FILL, TYPE IV

STA. 2+33 - STA. 5+50 RT

GRUBBING MATERIAL (12")

STA. 2+33 - STA. 5+50 RT

GRUBBING MATERIAL (6")

STA. 2+33 - STA. 2+58 LT
STA. 4+76 - STA. 4+97 LT

STEEL BEAM GUARDRAIL, GALVANIZED

STA. 2+07 - STA. 5+50 RT

REMOVING SIGNS

AS SHOWN - 3

REMOVAL AND DISPOSAL OF GUARDRAIL

STA. 2+26 - STA. 5+50 RT

TEMPORARY 4 INCH WHITE LINE, PAINT

STA. 1+00 - STA. 5+50 (SOLID LT & RT)

TEMPORARY 4 INCH YELLOW LINE, PAINT

STA. 1+00 - STA. 5+50 (SOLID LT & RT)

DURABLE 4 INCH WHITE LINE (SEE OPTION ITEMS)

STA. 1+00 - STA. 5+50 (SOLID LT & RT)

DURABLE 4 INCH YELLOW LINE (SEE OPTION ITEMS)

STA. 1+00 - STA. 5+50 (SOLID LT & RT)

CONSTRUCT GRAVEL DRIVES

W/ 4'-0" PAVED APRON

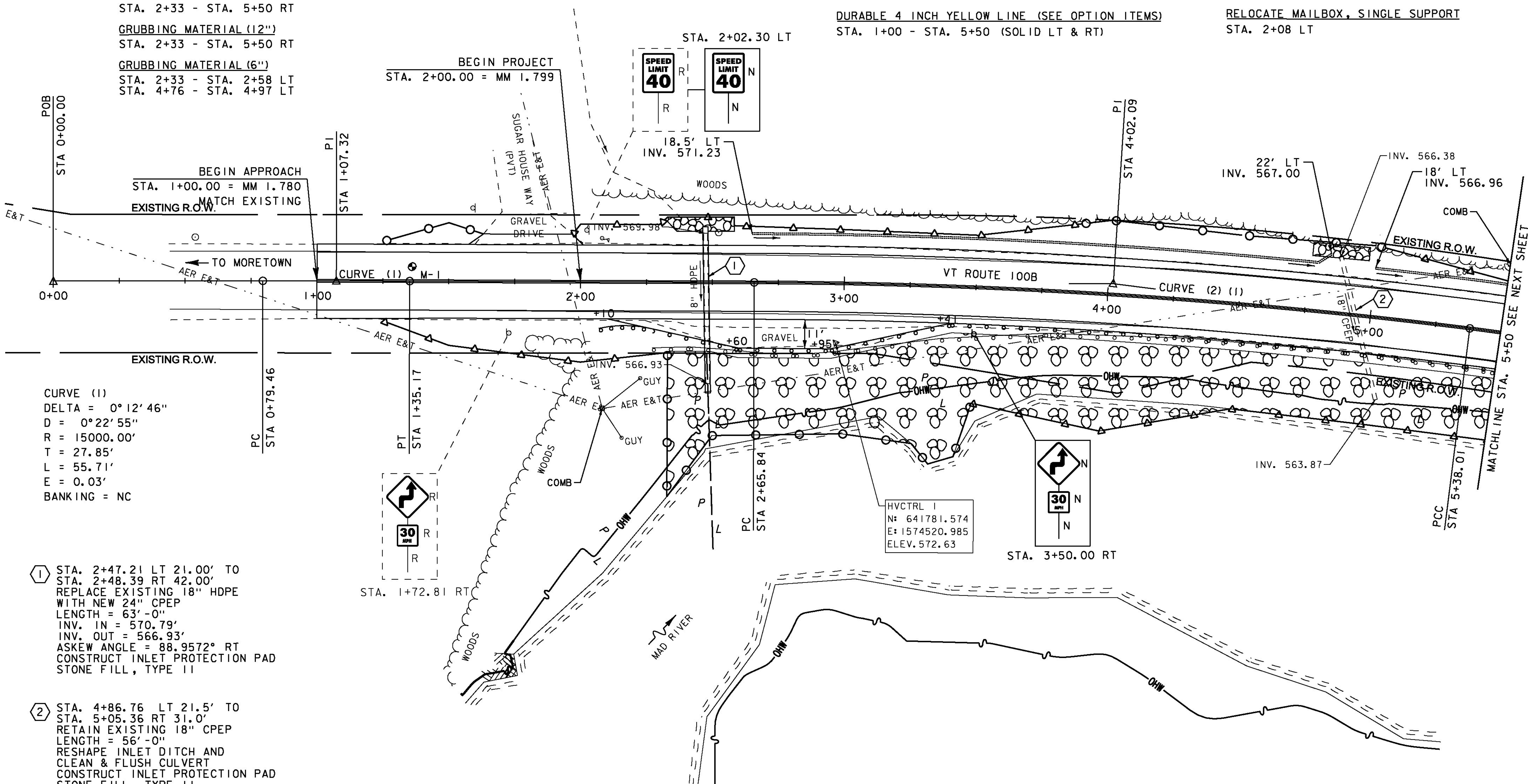
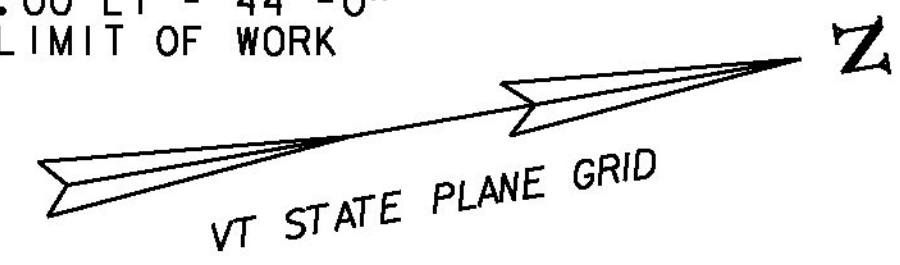
STA. 1+57.00 - STA. 2+01.00 LT - 44'-0"
MATCH EXISTING DRIVE AT LIMIT OF WORK

6 INCH UNDERDRAIN PIPE

STA. 2+65 - STA. 4+85 LT
STA. 5+00 - STA. 5+50 LT

RELOCATE MAILBOX, SINGLE SUPPORT

STA. 2+08 LT

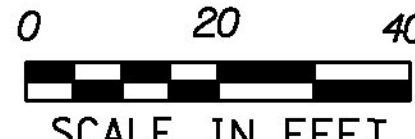


CURVE (1)
DELTA = 0°12'46"
D = 0°22'55"
R = 15000.00'
T = 27.85'
L = 55.71'
E = 0.03'
BANKING = NC

① STA. 2+47.21 LT 21.00' TO
STA. 2+48.39 RT 42.00'
REPLACE EXISTING 18" HDPE
WITH NEW 24" CPEP
LENGTH = 63'-0"
INV. IN = 570.79'
INV. OUT = 566.93'
ASKEW ANGLE = 88.9572° RT
CONSTRUCT INLET PROTECTION PAD
STONE FILL, TYPE II

② STA. 4+86.76 LT 21.5' TO
STA. 5+05.36 RT 31.0'
RETAIN EXISTING 18" CPEP
LENGTH = 56'-0"
RESHAPE INLET DITCH AND
CLEAN & FLUSH CULVERT
CONSTRUCT INLET PROTECTION PAD
STONE FILL, TYPE II

CURVE (2)
DELTA = 61°04'58"
D = 2°32'47" (1) D = 9°42'40" (2) D = 20°50'05" (3)
R = 2250.00' (1) R = 590.00' (2) R = 275.00' (3)
T = 455.58' (1) T = 199.13' (2)
L = 272.17' (1) L = 140.79' (2) L = 194.29' (3)
E = 45.66'
BANKING = 0.034 FT/FT (1) 0.076 FT/FT (2) 0.077 FT/FT (3)
40 MPH 40 MPH 30MPH



PROJECT NAME: MORETOWN	PLOT DATE: 2/17/2015
PROJECT NUMBER: ER STP 0167 (15)	DRAWN BY: B. MACK
FILE NAME: z12c524bdr.dgn	CHECKED BY: J. TUCKER
PROJECT LEADER: J. TUCKER	SHEET 24 OF 57
DESIGNED BY: B. BRESLEND	
PLAN SHEET 1	