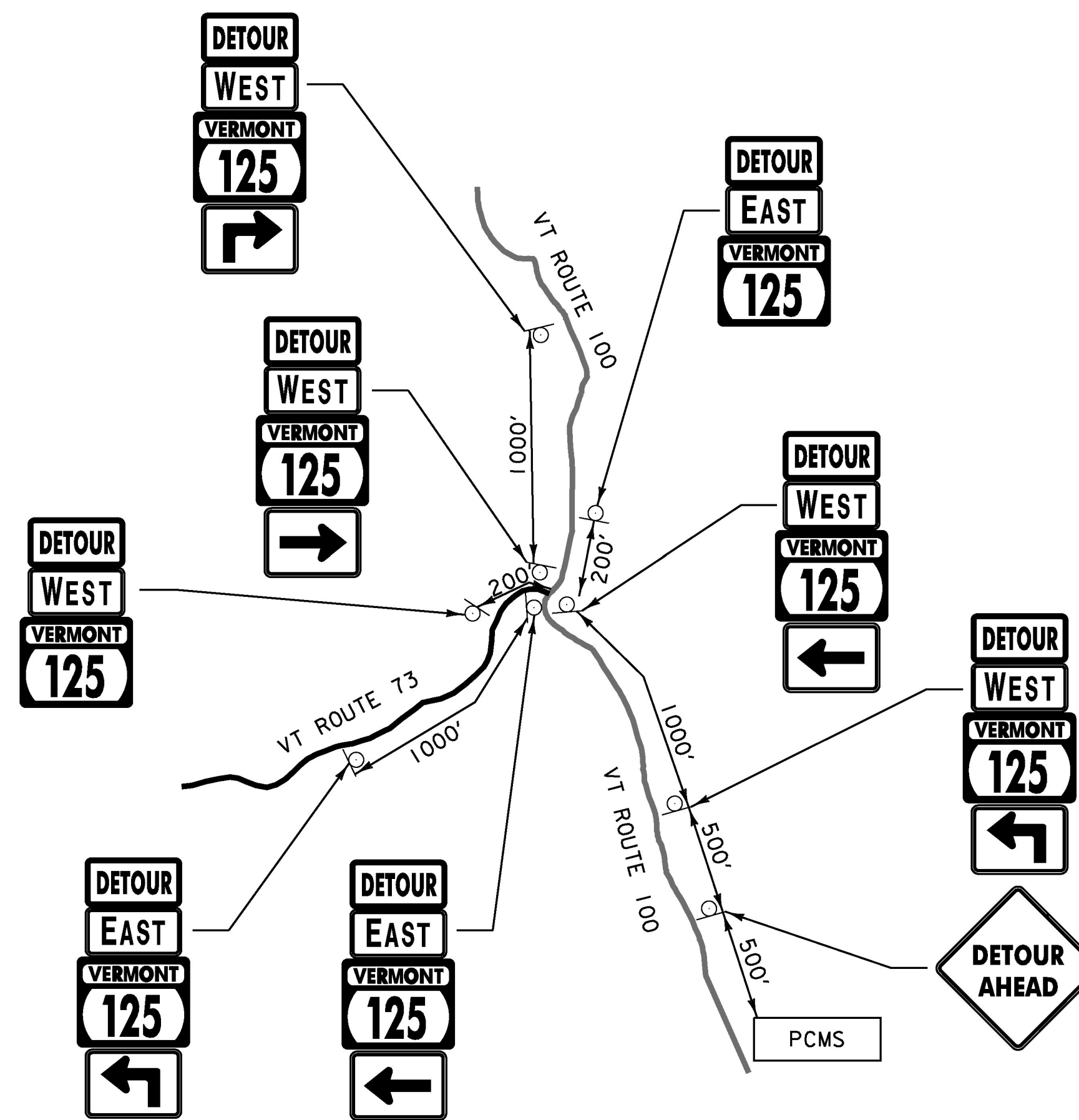
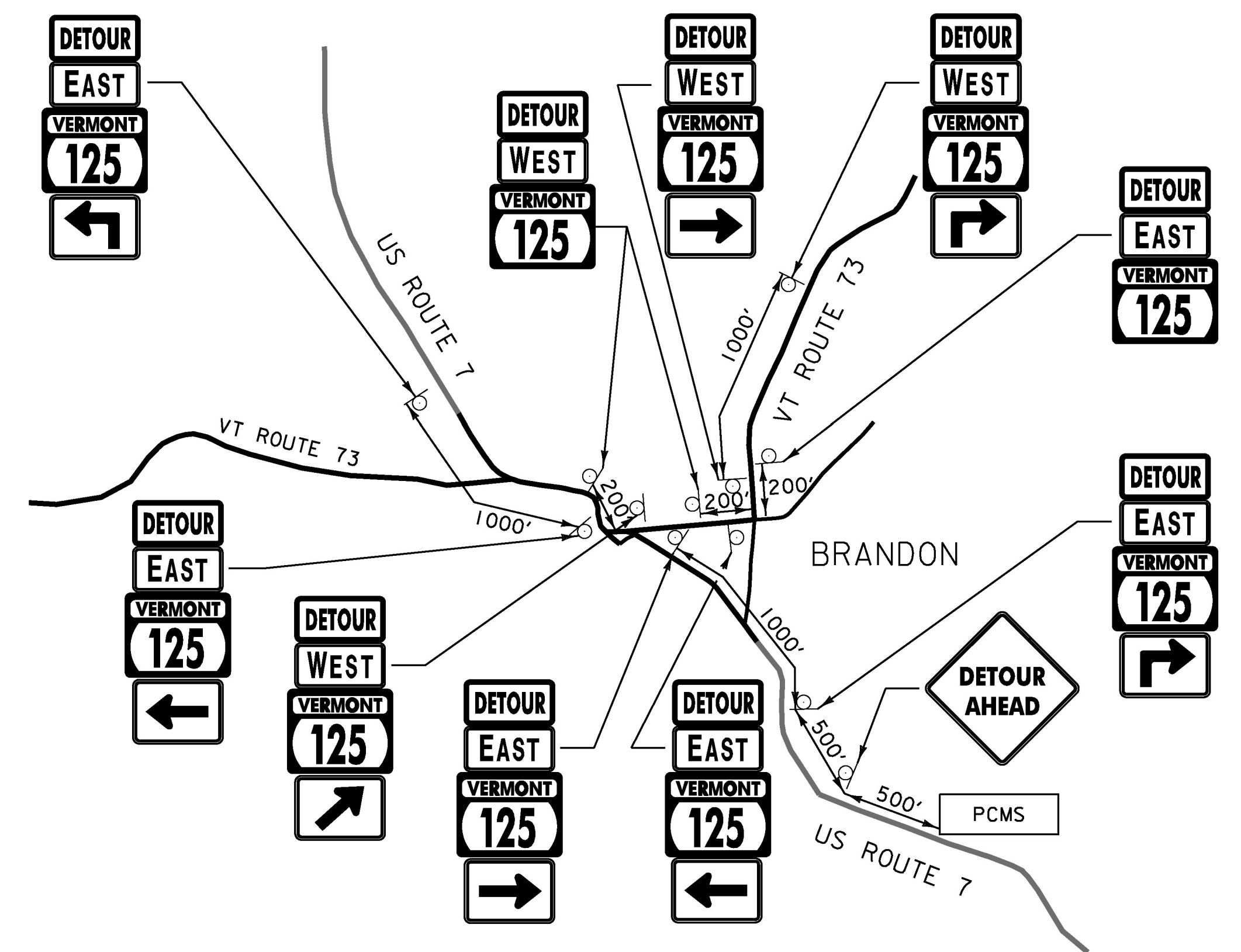


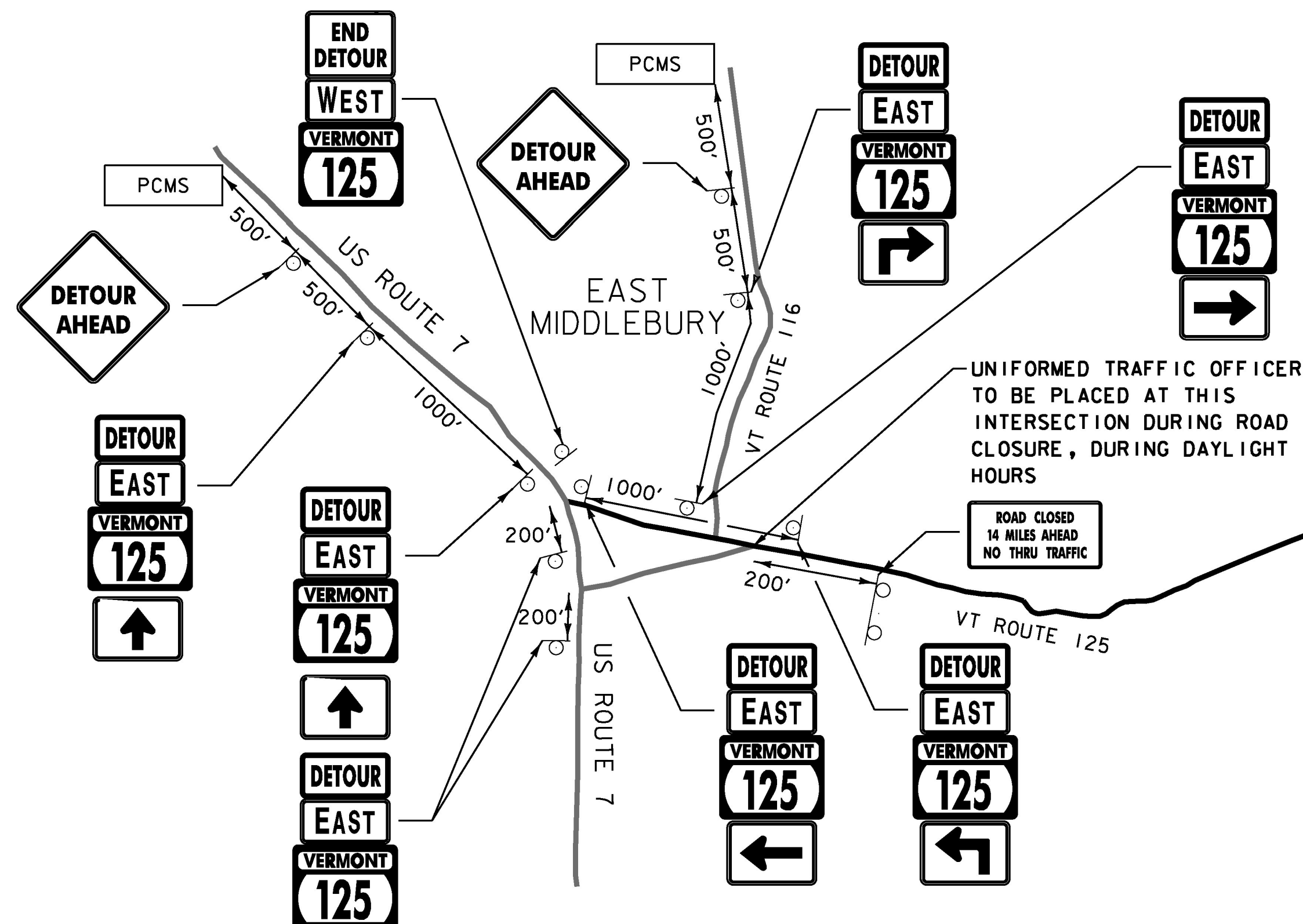
DETAIL A
NOT TO SCALE



DETAIL B
NOT TO SCALE



DETAIL C
NOT TO SCALE



DETAIL D
NOT TO SCALE

NOTES :

1. ALL COSTS OF INSTALLING, MAINTAINING AND REMOVING THE SIGNS AND BARRICADES IN THIS TRAFFIC CONTROL PLAN AS NECESSARY TO MEET PROJECT CONDITIONS WILL BE INCLUDED IN THE UNIT PRICE BID FOR THE CONTRACT ITEM 900.645 SPECIAL PROVISION (TRAFFIC CONTROL, ALL INCLUSIVE).
2. ALL TRAFFIC SIGNS SHALL CONFORM TO THE MANUAL ON UNIFORM TRAFFIC CONTROL DEVICES (MUTCD) 2009 EDITION.
3. "ROAD CLOSED" SIGNS SHALL BE MOUNTED AND MAINTAINED ON TYPE III BARRICADES.
4. TYPE III BARRICADES SHALL BE PLACED SO AS TO PHYSICALLY EXCLUDE TRAFFIC FROM THE ENTIRE ROADWAY WIDTH OR AT THE DISCRETION OF THE ENGINEER.
5. WHEN POSSIBLE LOCATE "ROAD CLOSED 1000 FT" SIGN NEAR A LOCATION WHERE DRIVERS CAN TURN AROUND.
6. WHERE POSSIBLE LOCATE THE DETOUR ROUTE MARKER ASSEMBLIES ADJACENT TO EXISTING ROUTE MARKER ASSEMBLIES.
7. SIGN SPACING IS FOR REFERENCE ONLY. FIELD ADJUSTMENTS WILL LIKELY BE NECESSARY, AS APPROVED BY THE ENGINEER.
8. EXISTING SIGNS IN CONFLICT WITH THIS DETOUR PLAN SHOULD BE COVERED WHEN NECESSARY, AS APPROVED BY THE ENGINEER.
9. FLAGGERS SHALL BE PAID UNDER ITEM 630.15 "FLAGGERS". UNIFORMED TRAFFIC OFFICERS SHALL BE PAID UNDER ITEM 630.10 "UNIFORMED TRAFFIC OFFICERS". PORTABLE CHANGEABLE MESSAGE SIGN SHALL BE PAID UNDER ITEM 641.15 "PORTABLE CHANGEABLE MESSAGE SIGN".

PCMS = PORTABLE CHANGEABLE MESSAGE SIGN

PROJECT NAME: HANCOCK
PROJECT NUMBER: ER STP 0174(18)

FILE NAME: z12c412detour.dgn
PROJECT LEADER: J. TUCKER
DESIGNED BY: B. BRESLEND
DETOUR DETAIL SHEET 1

PLOT DATE: 10/11/2016
DRAWN BY: O. DALMER
CHECKED BY: A. SANZ
SHEET 41 OF 42