

DURABLE 4 INCH WHITE LINE (SEE OPTION ITEMS)

STA. 256+40 LT TO STA. 259+10 LT (SOLID EDGELINE)
 STA. 256+40 RT TO STA. 257+73 RT (SOLID EDGELINE)
 STA. 257+73 RT TO STA. 257+79 RT (SOLID TOWN HIGHWAY EDGELINE)
 STA. 257+90 RT TO STA. 258+33 RT (SOLID TOWN HIGHWAY EDGELINE)
 STA. 258+33 RT TO STA. 259+10 RT (SOLID EDGELINE)

DURABLE 4 INCH YELLOW LINE (SEE OPTION ITEMS)

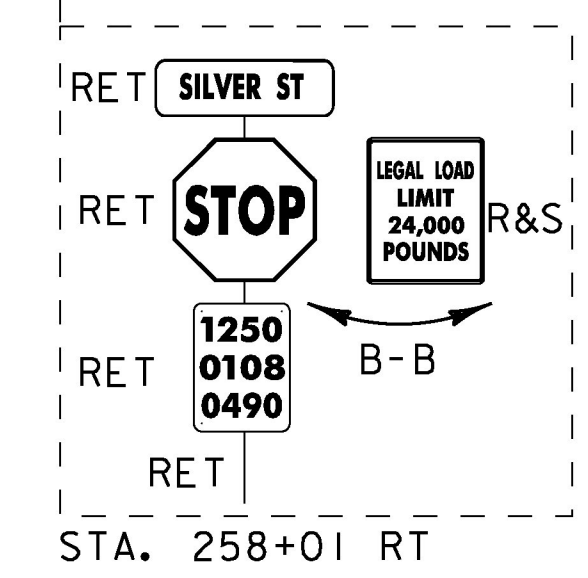
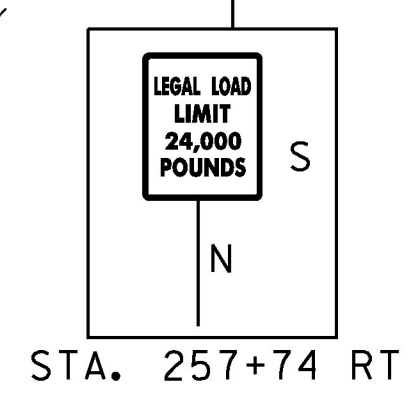
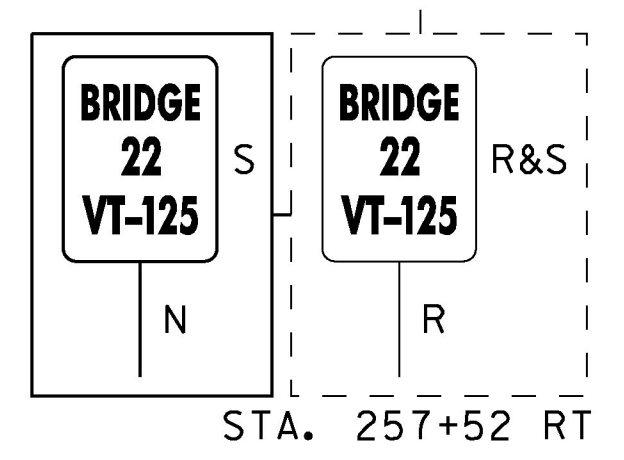
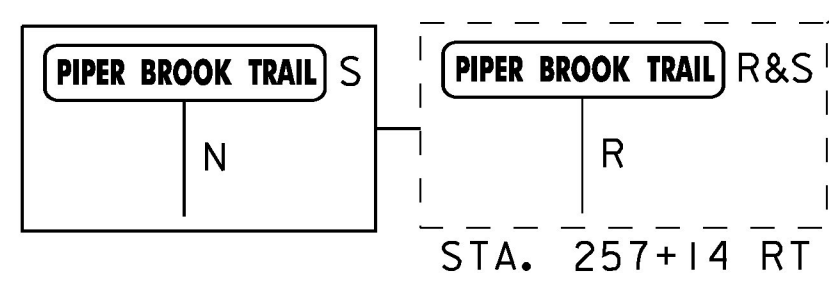
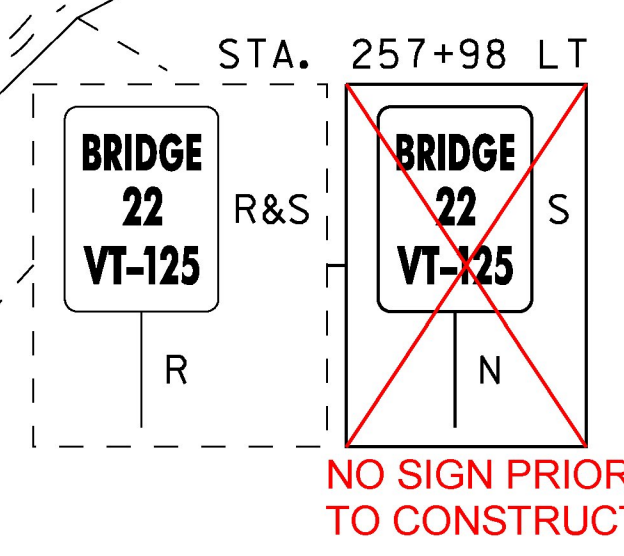
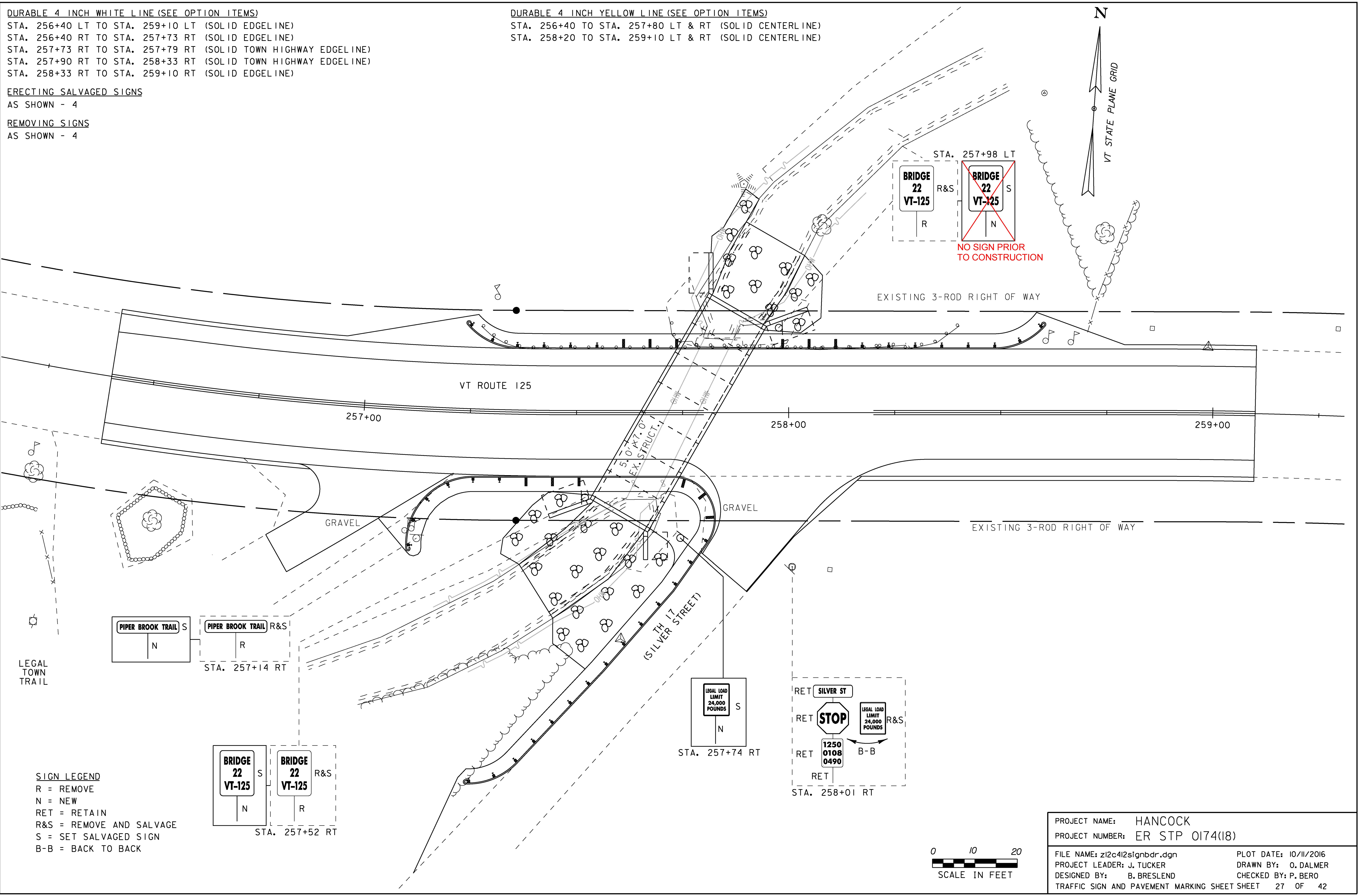
STA. 256+40 TO STA. 257+80 LT & RT (SOLID CENTERLINE)
 STA. 258+20 TO STA. 259+10 LT & RT (SOLID CENTERLINE)

ERECTING SALVAGED SIGNS

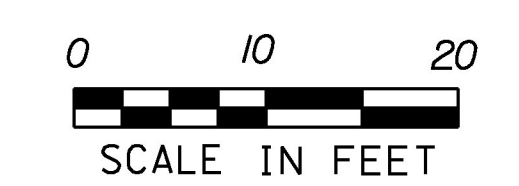
AS SHOWN - 4

REMOVING SIGNS

AS SHOWN - 4



SIGN LEGEND
 R = REMOVE
 N = NEW
 RET = RETAIN
 R&S = REMOVE AND SALVAGE
 S = SET SALVAGED SIGN
 B-B = BACK TO BACK



PROJECT NAME:	HANCOCK
PROJECT NUMBER:	ER STP 0174(18)
FILE NAME: z12c412signbdr.dgn	PLOT DATE: 10/11/2016
PROJECT LEADER: J. TUCKER	DRAWN BY: O. DALMER
DESIGNED BY: B. BRESLEND	CHECKED BY: P. BERO
TRAFFIC SIGN AND PAVEMENT MARKING SHEET SHEET 27 OF 42	