

STONE FILL, TYPE III
 STA. 257+33 - STA. 257+73 RT
 STA. 257+81 - STA. 258+08 LT

GEOTEXTILE FOR SILT FENCE
 STA. 257+25.00 - STA. 257+44.00 RT
 STA. 257+44.00 - STA. 257+69.00 RT
 STA. 257+75.00 - STA. 257+81.00 LT
 STA. 257+98.00 - STA. 258+10.00 LT
 STA. 258+16.00 - STA. 258+55.00 LT
 STA. 258+52.00 - STA. 258+72.00 LT
 STA. 258+67.00 - STA. 259+10.00 LT

SEED
 STA. 256+40 - 259+10 LT
 STA. 256+40 - 256+91 RT
 STA. 256+85 - 257+79 RT
 STA. 258+00 - 259+10 RT

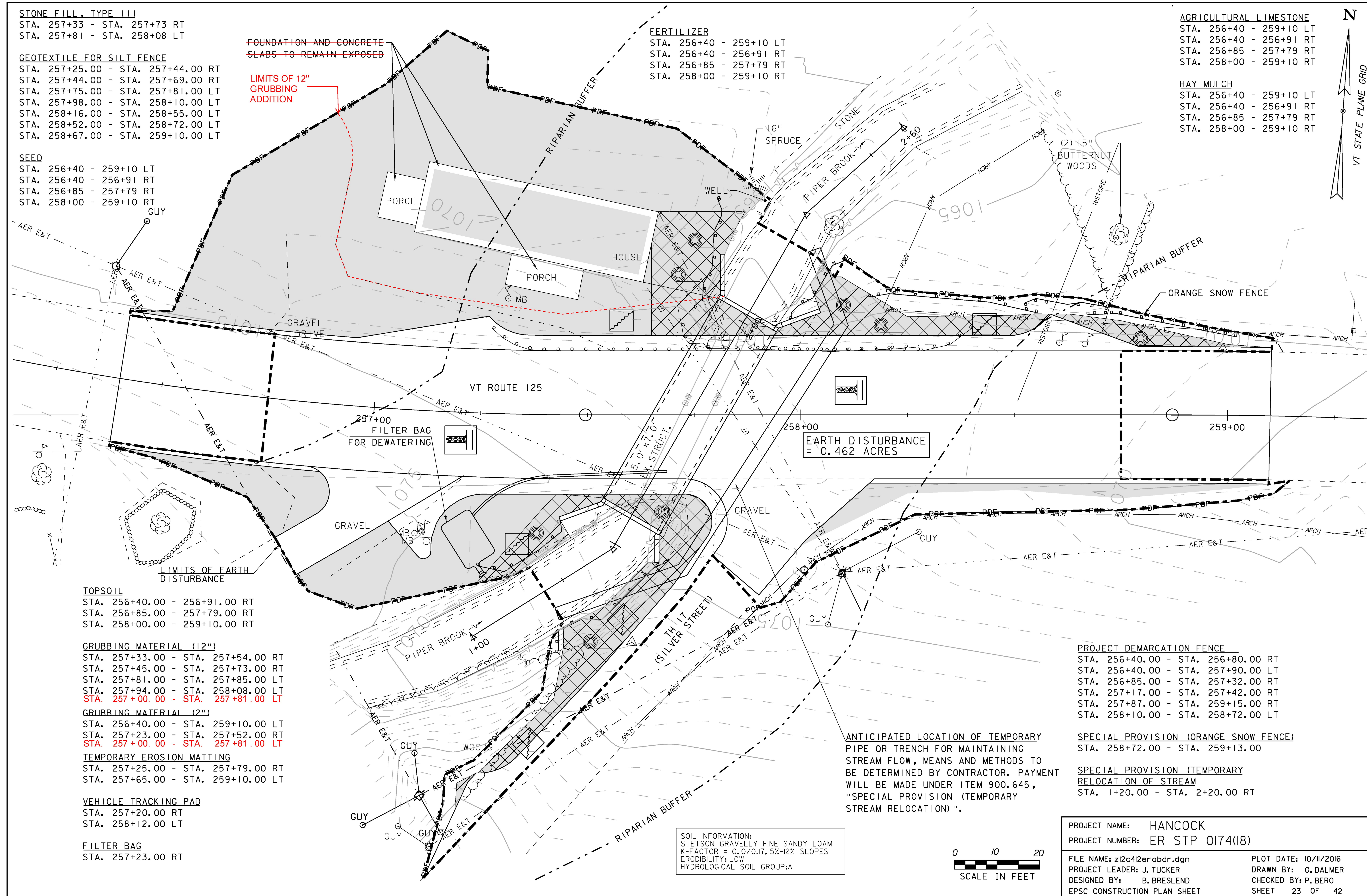
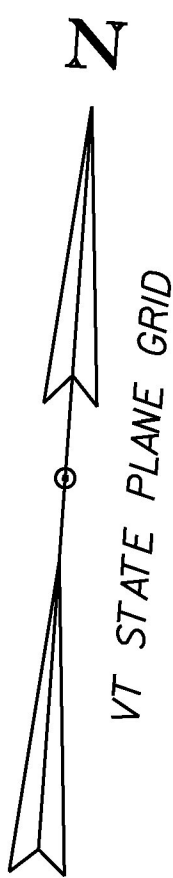
**FOUNDATION AND CONCRETE
 SLABS TO REMAIN EXPOSED**

**LIMITS OF 12"
 GRUBBING
 ADDITION**

FERTILIZER
 STA. 256+40 - 259+10 LT
 STA. 256+40 - 256+91 RT
 STA. 256+85 - 257+79 RT
 STA. 258+00 - 259+10 RT

AGRICULTURAL LIMESTONE
 STA. 256+40 - 259+10 LT
 STA. 256+40 - 256+91 RT
 STA. 256+85 - 257+79 RT
 STA. 258+00 - 259+10 RT

HAY MULCH
 STA. 256+40 - 259+10 LT
 STA. 256+40 - 256+91 RT
 STA. 256+85 - 257+79 RT
 STA. 258+00 - 259+10 RT



TOPSOIL
 STA. 256+40.00 - 256+91.00 RT
 STA. 256+85.00 - 257+79.00 RT
 STA. 258+00.00 - 259+10.00 RT

GRUBBING MATERIAL (12")
 STA. 257+33.00 - STA. 257+54.00 RT
 STA. 257+45.00 - STA. 257+73.00 RT
 STA. 257+81.00 - STA. 257+85.00 LT
 STA. 257+94.00 - STA. 258+08.00 LT
 STA. 257+00.00 - STA. 257+81.00 LT

GRUBBING MATERIAL (2")
 STA. 256+40.00 - STA. 259+10.00 LT
 STA. 257+23.00 - STA. 257+52.00 RT
 STA. 257+00.00 - STA. 257+81.00 LT

TEMPORARY EROSION MATTING
 STA. 257+25.00 - STA. 257+79.00 RT
 STA. 257+65.00 - STA. 259+10.00 LT

VEHICLE TRACKING PAD
 STA. 257+20.00 RT
 STA. 258+12.00 LT

FILTER BAG
 STA. 257+23.00 RT

**EARTH DISTURBANCE
 = 0.462 ACRES**

ANTICIPATED LOCATION OF TEMPORARY PIPE OR TRENCH FOR MAINTAINING STREAM FLOW, MEANS AND METHODS TO BE DETERMINED BY CONTRACTOR. PAYMENT WILL BE MADE UNDER ITEM 900.645, "SPECIAL PROVISION (TEMPORARY STREAM RELOCATION)".

SOIL INFORMATION:
 STETSON GRAVELLY FINE SANDY LOAM
 K-FACTOR = 0.10/0.17, 5%-12% SLOPES
 ERODIBILITY: LOW
 HYDROLOGICAL SOIL GROUP: A



PROJECT DEMARCATION FENCE
 STA. 256+40.00 - STA. 256+80.00 RT
 STA. 256+40.00 - STA. 257+90.00 LT
 STA. 256+85.00 - STA. 257+32.00 RT
 STA. 257+17.00 - STA. 257+42.00 RT
 STA. 257+87.00 - STA. 259+15.00 RT
 STA. 258+10.00 - STA. 258+72.00 LT

SPECIAL PROVISION (ORANGE SNOW FENCE)
 STA. 258+72.00 - STA. 259+13.00

SPECIAL PROVISION (TEMPORARY RELOCATION OF STREAM)
 STA. 1+20.00 - STA. 2+20.00 RT

PROJECT NAME: HANCOCK	
PROJECT NUMBER: ER STP 0174(18)	
FILE NAME: z12c412erobdr.dgn	PLOT DATE: 10/11/2016
PROJECT LEADER: J. TUCKER	DRAWN BY: O. DALMER
DESIGNED BY: B. BRESLEND	CHECKED BY: P. BERO
EPSC CONSTRUCTION PLAN SHEET	SHEET 23 OF 42