

STEEL BEAM GUARDRAIL, GALVANIZED/NESTED
 STA. 257+15.66 RT TO STA. 257+69.43 RT
 STA. 257+35.80 LT TO STA. 258+36.10 LT

ANCHOR FOR STEEL BEAM RAIL
 STA. 257+15.66 RT
 STA. 257+35.80 LT
 STA. 257+37.36 RT
 STA. 258+48.60 LT

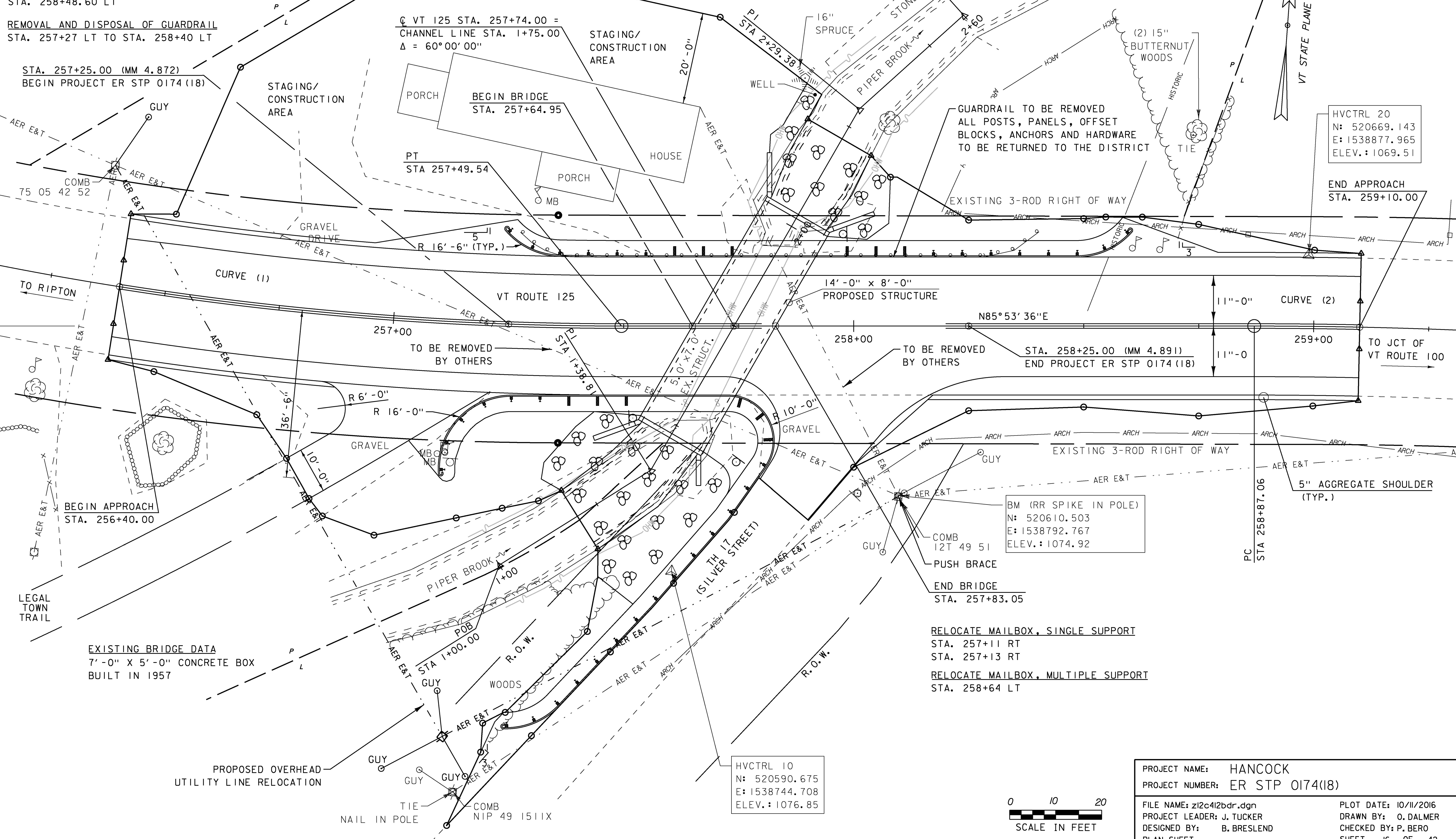
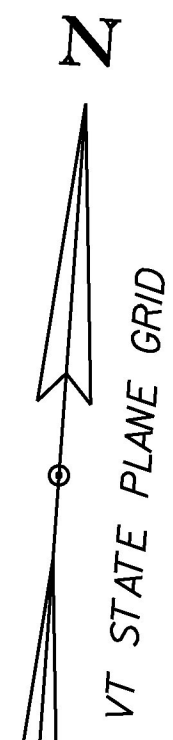
REMOVAL AND DISPOSAL OF GUARDRAIL
 STA. 257+27 LT TO STA. 258+40 LT

STA. 257+25.00 (MM 4.872)
 BEGIN PROJECT ER STP 0174 (18)

STEEL BEAM GUARDRAIL, GALVANIZED
 STA. 257+12.02 RT TO STA. 257+15.66 RT
 STA. 257+23.92 LT TO STA. 257+35.80 LT
 STA. 257+26.68 RT TO STA. 257+69.43 RT
 STA. 258+36.10 LT TO STA. 258+60.14 LT

CURVE (1)
 DELTA = 25°30'24"
 D = 8°11'06"
 R = 700.00'
 T = 158.44'
 L = 311.62'
 E = 17.71'

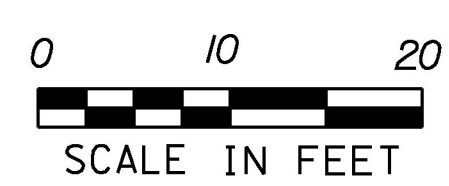
CURVE (2)
 DELTA = 14°37'47"
 D = 5°12'31"
 R = 1100.00'
 T = 141.20'
 L = 280.87'
 E = 9.03'



HVCTRL 20
 N: 520669.143
 E: 1538877.965
 ELEV.: 1069.51

BM (RR SPIKE IN POLE)
 N: 520610.503
 E: 1538792.767
 ELEV.: 1074.92

HVCTRL 10
 N: 520590.675
 E: 1538744.708
 ELEV.: 1076.85



PROJECT NAME:	HANCOCK
PROJECT NUMBER:	ER STP 0174(18)
FILE NAME:	z12c412bdr.dgn
DESIGNED BY:	B. BRESLEND
PROJECT LEADER:	J. TUCKER
CHECKED BY:	P. BERO
PLOT DATE:	10/11/2016
DRAWN BY:	O. DALMER
PLAN SHEET	SHEET 16 OF 42