

STEEL BEAM GUARDRAIL, GALVANIZED/NESTED
 STA. 257+15.66 RT TO STA. 257+69.43 RT
 STA. 257+35.80 LT TO STA. 258+36.10 LT

ANCHOR FOR STEEL BEAM RAIL

STA. 257+35.80 LT
 STA. 257+15.66 RT
 STA. 257+69.43 RT
 STA. 258+47.05 LT
**BEGIN R.O.W. PROJECT
 ER STP 0174(18)
 STA. 256+16, 22.68' LT**

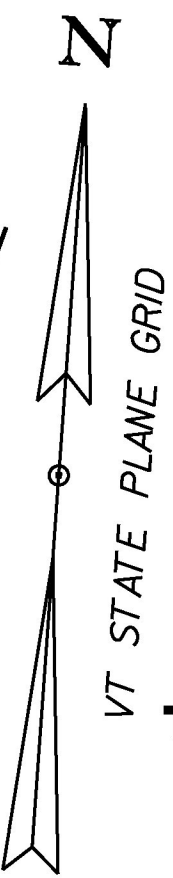
REMOVAL AND DISPOSAL OF GUARDRAIL
 STA. 257+72 LT TO STA. 258+28 LT

STA. 257+25.00 (MM 4.872)
 BEGIN PROJECT ER STP 0174(18)

STEEL BEAM GUARDRAIL, GALVANIZED
 STA. 257+23.40 LT TO STA. 257+35.80 LT
 STA. 257+12.02 RT TO STA. 257+15.66 RT
 STA. 257+58.69 RT TO STA. 257+69.43 RT
 STA. 258+36.10 LT TO STA. 258+59.55 LT

CURVE (1)
 DELTA = 25°30'24"
 D = 8°11'06"
 R = 700.00'
 T = 158.44'
 L = 311.62'
 E = 17.71'

CURVE (2)
 DELTA = 14°37'47"
 D = 5°12'31"
 R = 1100.00'
 T = 141.20'
 L = 280.87'
 E = 9.03'

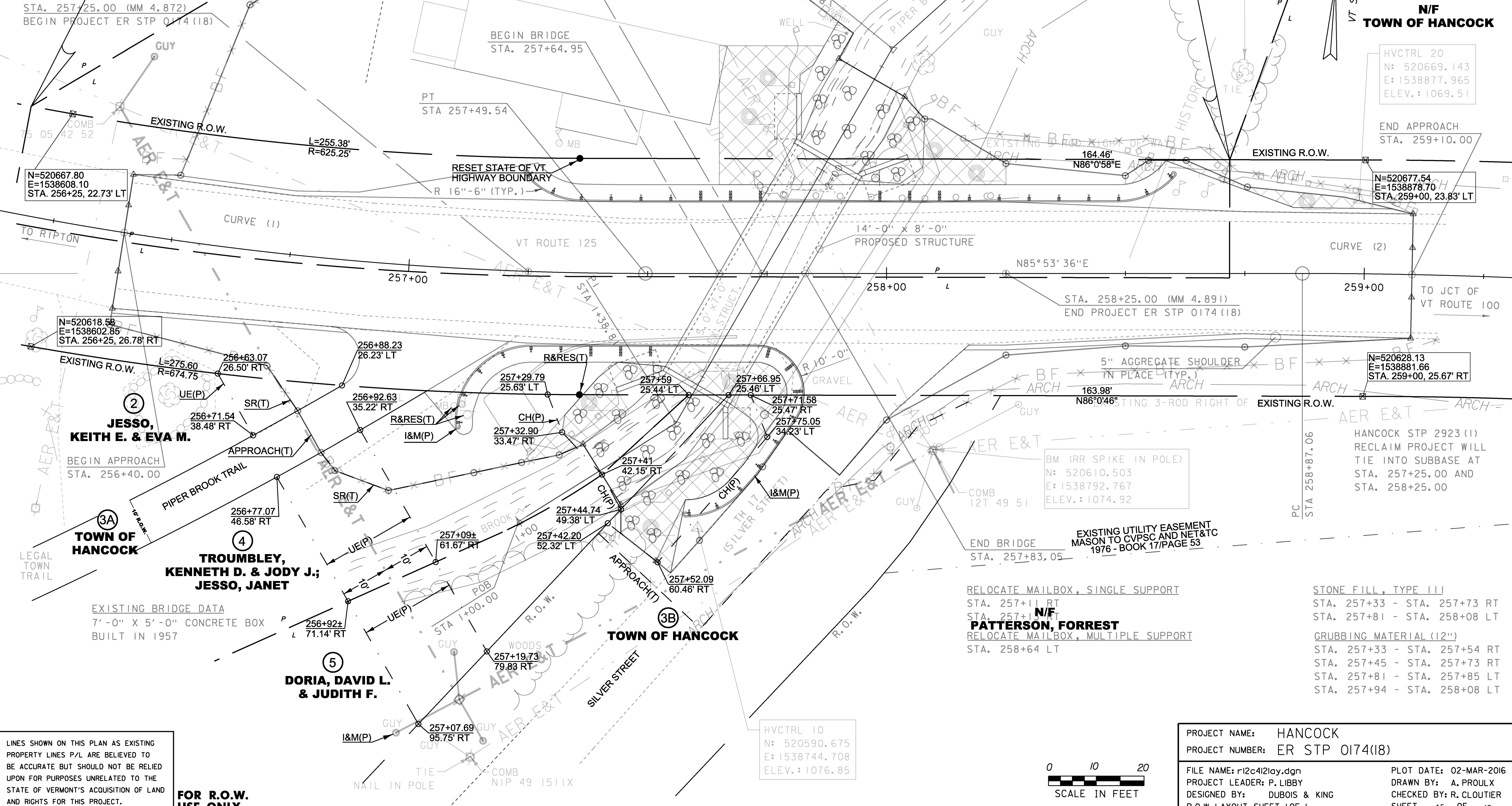


N/F
TOWN OF HANCOCK

HVCTRL 20
 N: 520669.143
 E: 1538877.965
 ELEV.: 1069.51

END APPROACH
 STA. 259+10.00

N=520677.54
 E=1538878.70
 STA. 259+00, 23.83' LT



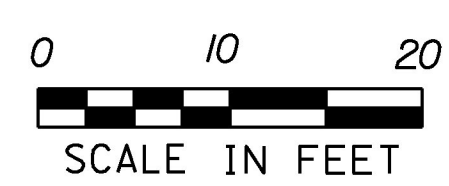
N=520667.80
 E=1538608.10
 STA. 256+25, 22.73' LT

N=520618.58
 E=1538602.85
 STA. 256+25, 26.78' RT

N=520628.13
 E=1538881.66
 STA. 259+00, 25.67' RT

BM (RR SPIKE IN POLE)
 N: 520610.503
 E: 1538792.767
 ELEV.: 1074.92

HVCTRL 10
 N: 520590.675
 E: 1538744.708
 ELEV.: 1076.85



LINES SHOWN ON THIS PLAN AS EXISTING
 PROPERTY LINES P/L ARE BELIEVED TO
 BE ACCURATE BUT SHOULD NOT BE RELIED
 UPON FOR PURPOSES UNRELATED TO THE
 STATE OF VERMONT'S ACQUISITION OF LAND
 AND RIGHTS FOR THIS PROJECT.

**FOR R.O.W.
 USE ONLY**

PROJECT NAME:	HANCOCK	FILE NAME:	r12c412lay.dgn	PLOT DATE:	02-MAR-2016
PROJECT NUMBER:	ER STP 0174(18)	PROJECT LEADER:	P. LIBBY	DRAWN BY:	A. PROULX
		DESIGNED BY:	DUBOIS & KING	CHECKED BY:	R. CLOUTIER
		R.O.W. LAYOUT SHEET 1 OF 1		SHEET	15 OF 42