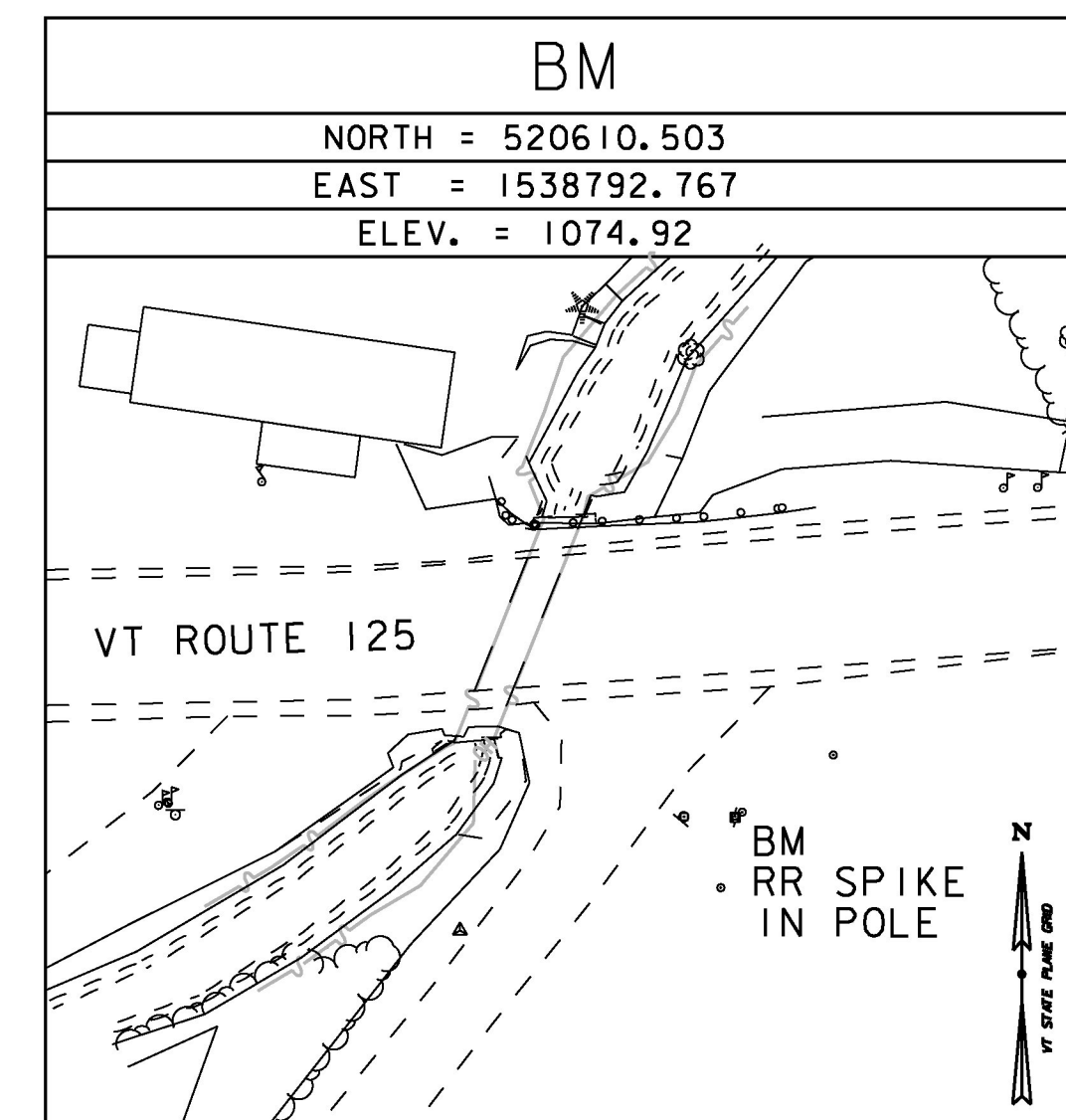
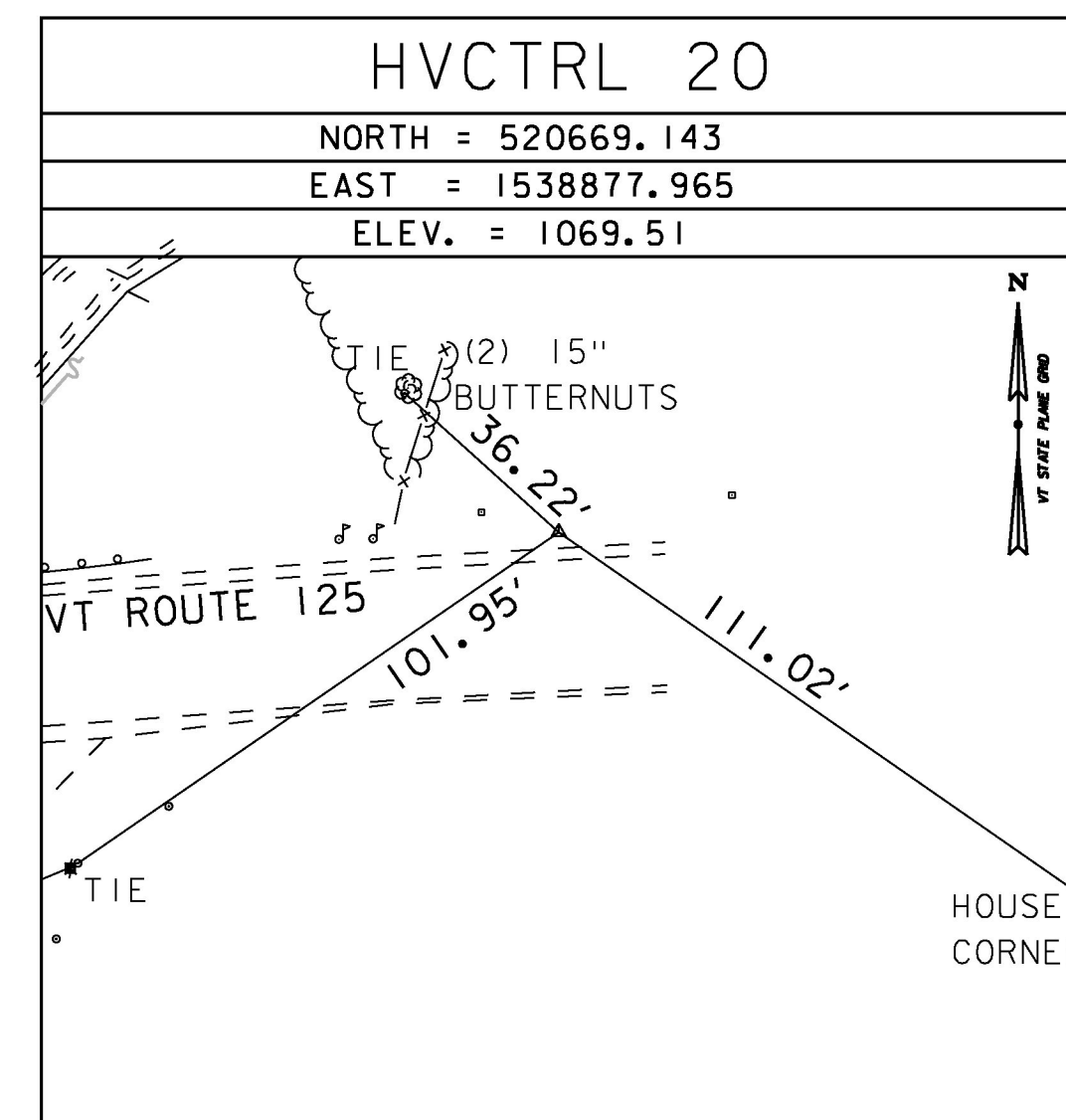
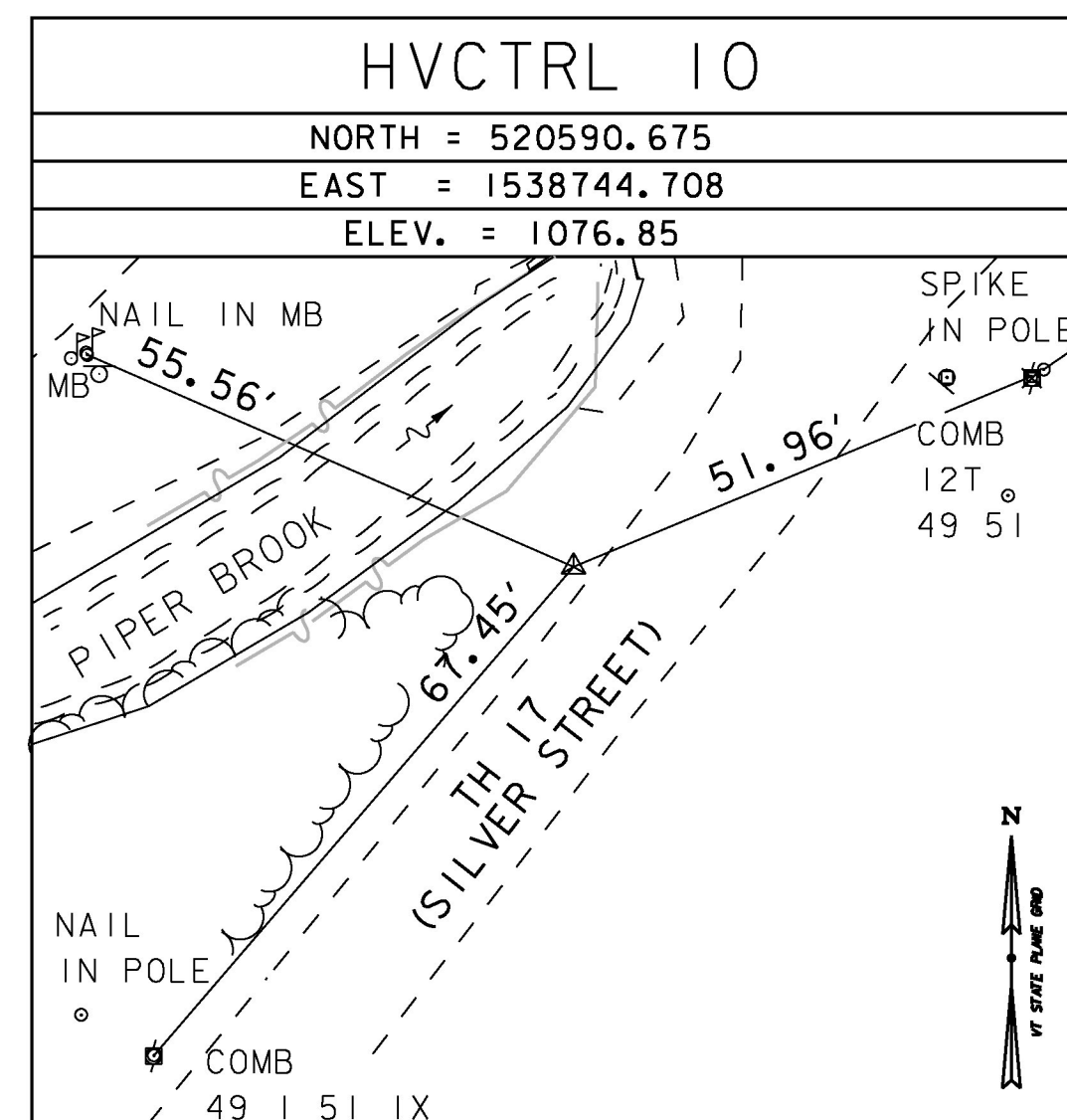


GPS CONTROL POINTS

CONTROL POINTS 10, 20 AND BM WERE ORIGINALLY BASED ON A MAPPING GRADE GPS UNIT LOCATION AND ADJUSTED TO FIT BETWEEN EACH OTHER BASED ON MEASURED GROUND DISTANCES FOR PROJECT ER STP 0174 (18).

SUBSEQUENTLY THE DATA FROM PROJECT ER STP 0174 (18), MAPPING GRADE GPS, WAS MERGED WITH PROJECT STP 2923 (1), SURVEY GRADE GPS LOCATIONS, AND THE CONTROL POINTS 10, 20, AND THE BM WERE ADJUSTED ON A BEST FIT BASIS TO PROJECT STP 2923 (1), UTILIZING POINTS LOCATED BY BOTH SURVEYS FOR THE CORRECTION.

TRAVERSE TIES



DATUM	
VERTICAL	NAVD 88 (geoid2a)
HORIZONTAL	NAD 83 (2011) epoch 2010.0
ADJUSTMENT	NONE

PROJECT NAME: HANCOCK	
PROJECT NUMBER: ER STP 0174(18)	
FILE NAME: z12c412+1.dgn	PLOT DATE: 10/11/2016
PROJECT LEADER: J. TUCKER	DRAWN BY: O. DALMER
DESIGNED BY: B. BRESLEND	CHECKED BY: P. BERO
TIE SHEET	SHEET 7 OF 42