

REMOVE AND RESET GUARDRAIL  
 STA. 337+25 - STA. 343+00 LT

STONE FILL, TYPE I  
 STA. 338+40 - STA. 338+62 RT  
 STA. 341+25 - STA. 341+75 RT

TEMPORARY 4 INCH WHITE LINE, PAINT  
 STA. 337+25 - STA. 343+00 (SOLID LT & RT)

STONE FILL, TYPE II  
 STA. 337+35 - STA. 343+00 LT

TEMPORARY 4 INCH YELLOW LINE, PAINT  
 STA. 337+25 - STA. 343+00 (SOLID LT & RT)

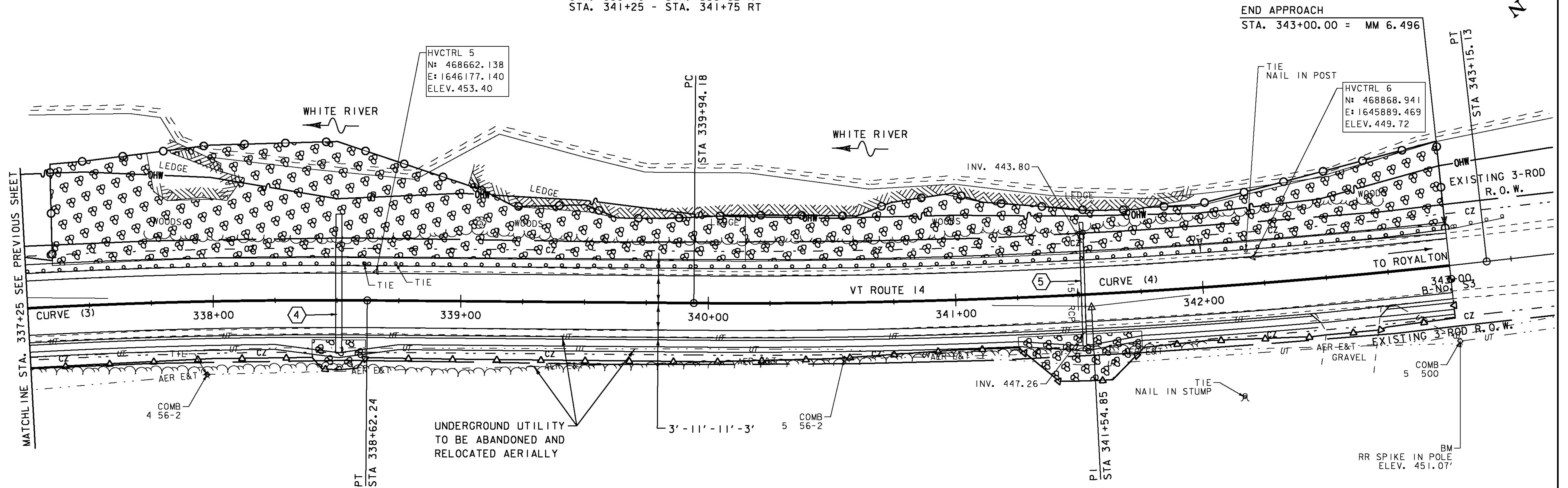
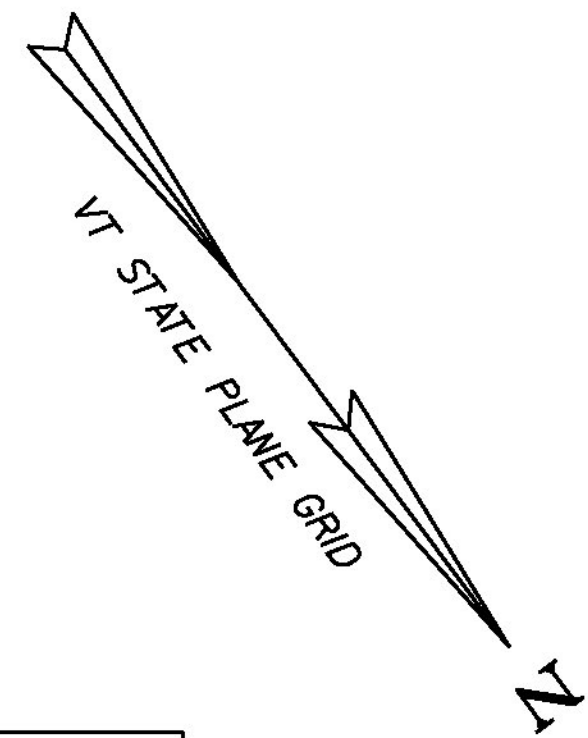
STONE FILL, TYPE IV  
 STA. 337+35 - STA. 343+00 LT

DURABLE 4 INCH WHITE LINE (SEE OPTION ITEMS)  
 STA. 337+25 - STA. 343+00 (SOLID LT & RT)

GRUBBING MATERIAL (12")  
 STA. 337+35 - STA. 343+00 LT

DURABLE 4 INCH YELLOW LINE (SEE OPTION ITEMS)  
 STA. 337+25 - STA. 343+00 (SOLID LT & RT)

GRUBBING MATERIAL (6")  
 STA. 338+40 - STA. 338+62 RT  
 STA. 341+25 - STA. 341+75 RT

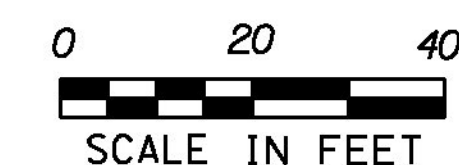


④ STA. 338+50.75 RT 21.2' TO  
 STA. 338+50.75 LT 34.8'  
 INSTALL NEW 30" CPEP (SL)  
 LENGTH = 56'-0"  
 INV. IN = 449.64'  
 INV. OUT = 445.65'  
 ASKEW ANGLE = 90.0°  
 CONSTRUCT INLET PROTECTION PAD  
 STONE FILL, TYPE I

⑤ STA. 341+51.13 RT 21' TO  
 STA. 341+52.08 LT 29'  
 REPLACE EXISTING 15" RCP  
 WITH NEW 24" CPEP (SL)  
 LENGTH = 50'-0"  
 INV. IN = 447.89'  
 INV. OUT = 442.96'  
 ASKEW ANGLE = 83.9°LT  
 CONSTRUCT INLET PROTECTION PAD  
 STONE FILL, TYPE I

CURVE (4)  
 DELTA = 6°56'21"  
 D = 2°09'44"  
 R = 2650.00'  
 T = 160.67'  
 L = 320.95'  
 E = 4.87'  
 BANKING = 0.041 FT/FT AT 50 MPH

CURVE (3)  
 DELTA = 7°16'10"  
 D = 2°36'16"  
 R = 2200.00'  
 T = 139.75'  
 L = 279.12'  
 E = 4.43'  
 BANKING = 0.048 FT/FT AT 50 MPH



PROJECT NAME: SHARON  
 PROJECT NUMBER: ER STP 0147 (20)

FILE NAME: z12c410bdr.dgn  
 PROJECT LEADER: J. TUCKER  
 DESIGNED BY: B. BRESLEND  
 PLAN SHEET 4

PLOT DATE: 3/31/2015  
 DRAWN BY: B. MACK  
 CHECKED BY: J. TUCKER  
 SHEET 29 OF 66