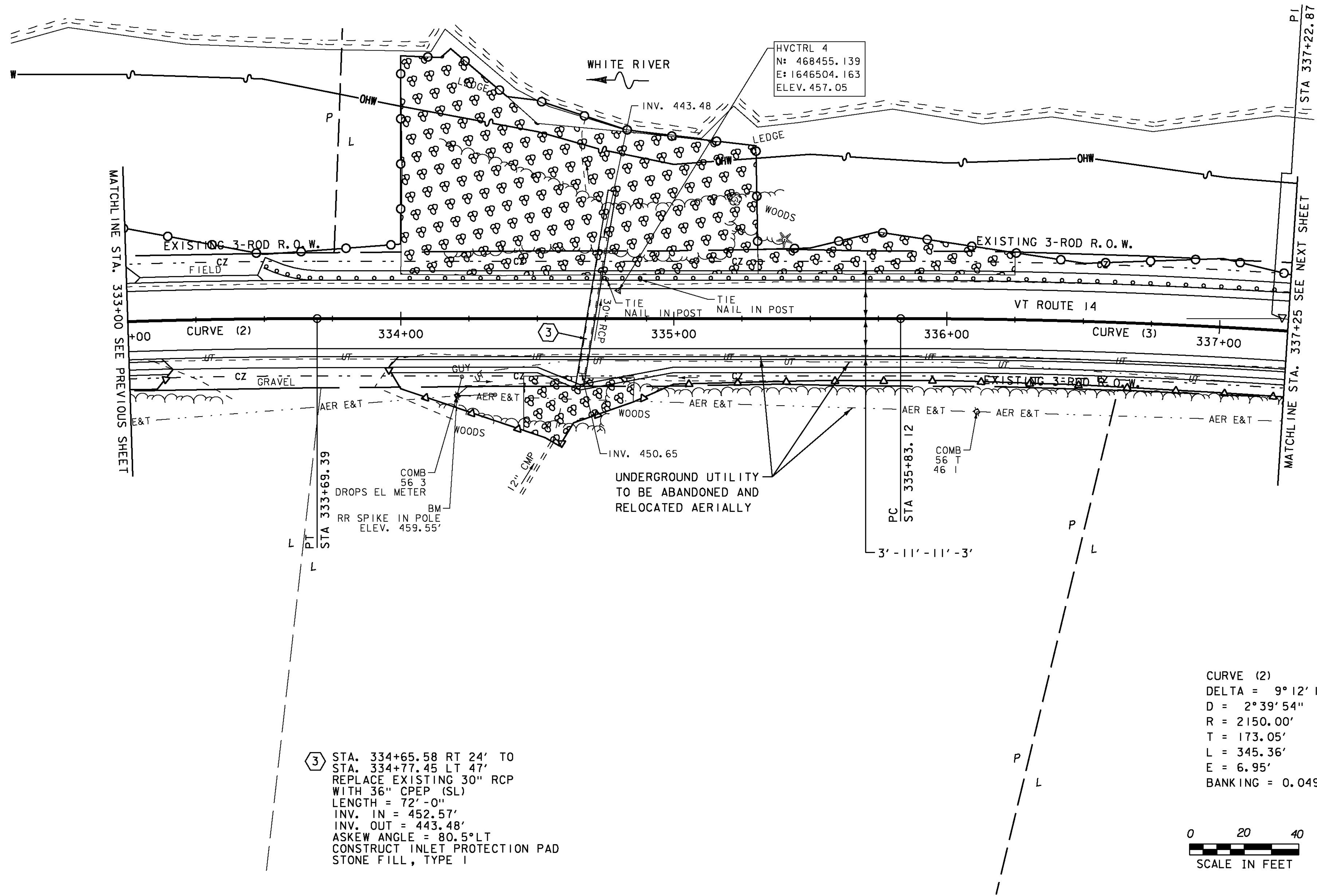
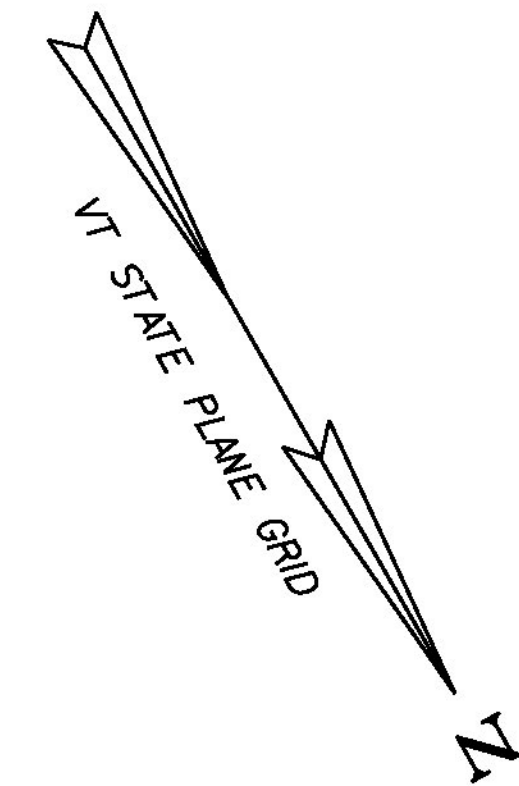


STONE FILL, TYPE I  
 STA. 334+45 - STA. 334+85 RT  
 STONE FILL, TYPE II  
 STA. 334+00 - STA. 336+25 LT  
 STONE FILL, TYPE IV  
 STA. 334+00 - STA. 335+30 LT  
 GRUBBING MATERIAL (6")  
 STA. 334+45 - STA. 334+85 RT  
 GRUBBING MATERIAL (12")  
 STA. 334+00 - STA. 336+25 LT

TEMPORARY 4 INCH WHITE LINE, PAINT  
 STA. 333+00 - STA. 337+25 (SOLID LT & RT)  
 TEMPORARY 4 INCH YELLOW LINE, PAINT  
 STA. 333+00 - STA. 337+25 (SOLID LT & RT)  
 DURABLE 4 INCH WHITE LINE (SEE OPTION ITEMS)  
 STA. 333+00 - STA. 337+25 (SOLID LT & RT)  
 DURABLE 4 INCH YELLOW LINE (SEE OPTION ITEMS)  
 STA. 333+00 - STA. 337+25 (SOLID LT & RT)

STEEL BEAM GUARDRAIL, GALVANIZED  
 STA. 333+50 - STA. 334+00 LT  
 REMOVE AND RESET GUARDRAIL  
 STA. 334+00 - STA. 337+25 LT  
 REMOVAL AND DISPOSAL OF GUARDRAIL  
 STA. 333+00 - STA. 333+03 LT  
 STA. 333+50 - STA. 334+00 LT  
 ANCHOR FOR STEEL BEAM RAIL  
 STA. 333+50 LT



③ STA. 334+65.58 RT 24' TO  
 STA. 334+77.45 LT 47'  
 REPLACE EXISTING 30" RCP  
 WITH 36" CPEP (SL)  
 LENGTH = 72'-0"  
 INV. IN = 452.57'  
 INV. OUT = 443.48'  
 ASKEW ANGLE = 80.5°LT  
 CONSTRUCT INLET PROTECTION PAD  
 STONE FILL, TYPE I

CURVE (2)	CURVE (3)
DELTA = 9° 12' 13"	DELTA = 7° 16' 10"
D = 2° 39' 54"	D = 2° 36' 16"
R = 2150.00'	R = 2200.00'
T = 173.05'	T = 139.75'
L = 345.36'	L = 279.12'
E = 6.95'	E = 4.43'
BANKING = 0.049 FT/FT AT 50 MPH	BANKING = 0.048 FT/FT AT 50 MPH



PROJECT NAME: SHARON	PLOT DATE: 3/31/2015
PROJECT NUMBER: ER STP 0147 (20)	DRAWN BY: B. MACK
FILE NAME: z12c410bdr.dgn	CHECKED BY: J. TUCKER
DESIGNED BY: B. BRESLEND	SHEET 28 OF 66
PLAN SHEET 3	